



**FIG COMMISSION 8**  
**Spatial Planning & Development**

# 2006

## THE YEAR OF THE BATON CHANGE



**CHAIR**

**Dr Diane Dumashie**  
**Director**  
**Dumashie Associates**  
**UNITED KINGDOM**

**CHAIR ELECT**

**Simon Adcock**  
**Client Manager**  
**Valuer-General Victoria**  
**AUSTRALIA**



**FIG COMMISSION 8**  
**Spatial Planning & Development**

# CONTENTS

	<b>Page</b>
<b>1. Introduction</b>	<b>3</b>
<b>2. Current Commission Work Plan</b>	<b>4</b>
<b>3. Proposed Commission Work Plan 2006 - 2010</b>	<b>7</b>
<b>4. Case Study 1 - Aurora at Epping, Victoria, Australia</b>	<b>15</b>
<b>5. Opportunities for your Involvement</b>	<b>18</b>
<b>6. Photo's Involving Commission 8</b>	<b>19</b>



**FIG COMMISSION 8**  
**Spatial Planning & Development**

# 1. INTRODUCTION

We are pleased to have produced the first CD for Commission 8 FIG. The purpose of this 'inaugural CD' is to provide an insight into the advances made under the stewardship of Diane, which Simon plans to build upon during his term effective from the Congress to be held in October 2006.

It is anticipated that Commission 8 will provide many opportunities to its members to collaborate in the building and sharing of knowledge across a truly global network.

A Commission can only be as strong as the building blocks and the more builders and building blocks, the stronger the Commission will become within FIG.

We encourage you to consider one hour per week of construction/building works within our Commission 8. The rewards will enhance your professional skills and the profession that you so clearly enjoy!



**FIG COMMISSION 8**  
**Spatial Planning & Development**

## 2. CURRENT COMMISSION WORK PLAN

The Commission has followed the accepted work plan, but as a small commission with relatively few delegates, the objective is to continue our efforts by focusing on our key goals which include for example disaster and risk management and informal settlements.

In taking over the Commission mid-term at the Athens Working Week, the Dr Dumashie highlighted the need to reinvigorate existing work groups and member organisation activity. As highlighted in figure 1, the key aims for the 2004-2006 session are to collaborate, contact, consult and communicate with the membership.

Figure 1\*

Work Plan 2004-2006		Commission 8	
TIME	AIMS	ACTION	INTER-RELATIONSHIP
Autumn 2004	Collaborate	Networking	FIG / MDGs / UN Agencies
	Contact	Invigorate existing members	Global Network
	Consult	Encourage W.G. outputs	Cross Commission
	Communicate	Regularly update news items & website	FIG / External
October 2004	Regional Conference: Jakarta	Presentations / Meetings	

\* Commission 8 Workplan 2004-2006 Part A (source Dumashie 2004)



**FIG COMMISSION 8**  
**Spatial Planning & Development**

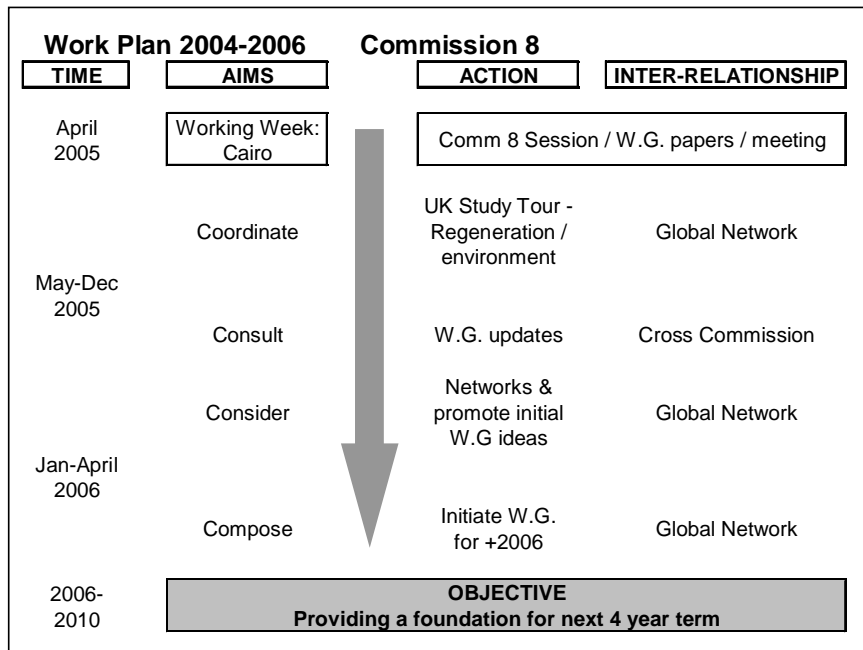
## 2. CURRENT COMMISSION WORK PLAN

...Continued

Looking forward to the new plan period after 2006, it is of vital importance to start to inform the decision-making process of our next work plan and we sought to evolve this in detail at the Commission 8 round table discussion in Cairo led by Dr Diane Dumashie. The preparatory process identified in Athens includes the need to coordinate, consult, consider and compose in anticipation of the 2006-2010 Work Plan (see figure 2).

Following on from the Jakarta Regional Meeting, much effort has been undertaken by the Commission to progress the agenda by liaising with international agencies, NGO's, government bodies and member organisations, as well as increased cross-commission involvement.

Figure 2\*



\* Commission 8 Workplan 2004-2006 Part A (source Dumashie 2004)



**FIG COMMISSION 8**  
**Spatial Planning & Development**

## **2.1 CURRENT STATUS**



**FIG COMMISSION 8**  
**Spatial Planning & Development**

## 3. PROPOSED COMMISSION WORK PLAN 2006 – 2010

### Terms of Reference

- Strategy for environmental sustainable development
- Informal settlement issues in spatial development, planning and governance
- Mega cities growth
- Disaster management in a global village
- Renewable and recyclables

### Mission Statement

The activities of Commission 8 in the years 2006-2010 will concentrate on all levels of physical planning which enables Environmental Sustainable Developments (ESD) to occur.

The importance of spatial planning in establishing the 'ground rules' at all levels including government, private sector and public/private partnership should not be underrated for the importance of the foundation for sustainable development and that of mankind.

The commission via extensive case studies, workshops, collaboration, consultation and cooperation will build a "fountain of knowledge" capable of enhancing and improving the quality of sustainable development.

### General

Commission 8, Spatial Planning and Development has been working since Brighton Congress and has organised its work via Working Groups. This structure is essential to the effective and efficient operations of a Commission. However it requires substantial commitment by the chairs of the Working groups and members.

- The activities of Commission 8 focus on physical planning at all levels, undertake and learn from case studies, and enhance understanding and knowledge of spatial planning systems. The commission assists with the implementation of Agenda 21 (from the Rio Earth Summit) and the Global Plan of Action (from the Habitat II Conference in Istanbul) at the local and urban level. It pays particular attention to informal settlements and urbanisation problems in developing countries.

**Comment [SB1]:** Not sure what 'local and urban' means, particularly if local is urban. Should this be 'local and regional level'?



**FIG COMMISSION 8**  
**Spatial Planning & Development**

### **3. PROPOSED COMMISSION WORK PLAN** **2006 – 2010...Continued**

- The Commission will continue to look for solutions for implementation problems and will focus on inner cities and declined areas. It will focus on public/private partnership as a way to work on solutions for those problems and other tools that promote planned and sustainable land use and development, particularly in towns and cities (urban areas).
- Commission 8, Spatial Planning and Development, is a broad Commission with a far reaching remit, reflective of the holistic skills found within planning and development of the Built Environment. To achieve its goals, a selective approach needs to be adopted.
- Under the guidance of Chairman Simon Adcock and his 2006-2010-work plan, Commission 8 emphasises that we, as surveyors and built environment experts, have a leadership role in the collective responsibility for well-functioning cities. The Commission recognises the three pillars of 'sustainable development' ie. balancing the competing development demands associated with economic, social and environmental aspirations. Further, the integrating activities of FIG allow for the adoption of a holistic approach to problem solving in the built environment."

#### **Envisaged New Commission Name**

To reflect the growing importance of environmental issues, it is proposed that Commission 8 be renamed "Spatial Planning and Sustainable Development". Further collaboration including FIG administration will be undertaken.

#### **Council Work Plan under review**

Commission 8 needs to step up to the next level and build upon the strengths in order to implement FIG Council specific goals of:

- FIG best practice
- Database
- Regional conference
- Central administration

The spectrum and speed of change is enormous within the global village. However, the desire to find solutions confronting a range of communities, from informal settlements through to mega cities, requires enthusiasm, innovation, resources and underlying knowledge. Sharing this knowledge and building upon collaborations will enable solutions to be found.





**FIG COMMISSION 8**  
**Spatial Planning & Development**

## 3. PROPOSED COMMISSION WORK PLAN 2006 – 2010...Continued

### **Working Groups**

#### **Working Group 8.1 - Strategy for Environmental Sustainable Development**

##### **Policy Issues**

This working group (WG) will be based upon the investigations etc of urban regeneration, however its focus will move towards sustainability in urban development/community lifestyles.

##### **Chair**

Seeking nominations.

##### **Reports**

Newsletter and/or CD each year with final group to present at the FIG Congress in Sydney 2010.

##### **Beneficiaries**

FIG members, governments, individual planners, developers.

#### **Working Group 8.2 - Informal Settlements issues in Spatial Development, Planning and Governance**

##### **Policy**

To be written by chair of WG 8.2

##### **Chair**

Diane Dumashie (United Kingdom)  
email: [ddd@dumashie.co.uk](mailto:ddd@dumashie.co.uk)

##### **Specific Project**

Proposed to be in Africa.

##### **Reports**

Newsletter and/or CD each year with final group to present at the FIG Congress in Sydney 2010.

##### **Beneficiaries**

Africa, and the developing world by directing appropriate cooperation, collaboration and consultation.



**FIG COMMISSION 8**  
**Spatial Planning & Development**

## 3. PROPOSED COMMISSION WORK PLAN 2006 – 2010...Continued

### **Working Group 8.3 - "Mega Cities"**

**Policy**

To study the impact and sustainability of mega cities, including the communities which inhabit them.

**Chair**

Ioana Manaolache – Romania (Nominated).

**Reports**

Newsletter and/or CD each year with final group to present at the FIG Congress in Sydney 2010.

**Beneficiaries**

To be determined by chair WG 8.3

### **Working Group 8.4 - Disaster Management in a Global Village**

**Policy**

To be written by chair of WG 8.4

**Chair**

Seeking nominations.

**Reports**

Newsletter and/or CD each year with final group to present at the FIG Congress in Sydney 2010.

**Beneficiaries**

To be determined by chair WG 8.4



**FIG COMMISSION 8**  
**Spatial Planning & Development**

## 3. PROPOSED COMMISSION WORK PLAN 2006 – 2010...Continued

### **Working Group 8.5 - Renewables and Recyclables**

**Policy**

To be written by chair of WG 8.5

**Chair**

Seeking nominations, possibly Irish delegate.

**Reports**

Newsletter and/or CD each year with final group to present at the FIG Congress in Sydney 2010.

**Beneficiaries**

To be determined by chair WG 8.5

### **Working Group 8.6 – Coastal Settlements and Climate Change**

**Policy**

To be written by chair of WG 8.6

**Chair**

Isaac Boateng (Nominated).

**Reports**

Newsletter and/or CD each year with final group to present at the FIG Congress in Sydney 2010.

**Beneficiaries**

To be determined by chair WG 8.6



**FIG COMMISSION 8**  
**Spatial Planning & Development**

## 3. PROPOSED COMMISSION WORK PLAN 2006 – 2010...Continued

### **Cooperation with United Nations Agencies**

Commission 8 will endeavour to strengthen the cooperation with the United Nations, and where possible, become involved with UN-Habitat and UNEP activities.

To this end I encouraged Diane to consider this special task and in turn represent Commission 8 in these important collaboration activities.

### **Administrator**

Commission 8 intends to appoint an administrator in order to assist with increasing the profile of the Commission via extensive publication and involvement at FIG conferences. Nomination/application will be sought prior to FIG Congress 2006.

### **Cooperation with other Commissions**

Commission 8 intends to continue to build upon the excellent work undertaken by the current members of Commission 8 Office bearers. Particular Commissions of interest are 7, 9 and 10, however collaboration with any of the Commissions is desirable. The Chair Elect for Commission 8, Simon Adcock, has substantial connections to Commission 9 as a previous Vice Chair of Commission 9.

### **Calendar of Events**

Commission 8 will aim to have a substantial program at all FIG regional conferences, working weeks and the world congress in Sydney. In addition, it is the intention to participate in events held in Africa during this period, for example UN-Habitat functions.

Vice Chairs will be encouraged to have papers presented from members of various WGs at each FIG function.



**FIG COMMISSION 8**  
**Spatial Planning & Development**

## 3. PROPOSED COMMISSION WORK PLAN 2006 – 2010...Continued

### **Commission Officers**

#### **Commission Chair Elect**

Simon Adcock  
Manager, Client Valuations  
Valuer-General Victoria  
State Government of Victoria  
Australia.

Tel: +61 3 8636 2558

Fax: +61 3 8636 2519

Mobile: +61 411 016 603

Email: [simon.adcock@dse.vic.gov.au](mailto:simon.adcock@dse.vic.gov.au)

#### **Vice Chair and Chair of Administration**

Seeking nominations

#### **Vice Chair and Chair of WG 8.1 - Strategy for Sustainable Development**

Seeking nominations.

#### **Vice Chair and Chair of WG 8.2 - Informal Settlements issues in Spatial Development, Planning and Governance**

Diane Dumashie  
Dumashie Associates

Keta Lodge

Creech, Wareham

Dorset BH20 5DG

United Kingdom

Tel: +44 1929 555 392

Fax: +44 1929 555 392

Email: [ddd@dumashie.co.uk](mailto:ddd@dumashie.co.uk)



**FIG COMMISSION 8**  
**Spatial Planning & Development**

### 3. PROPOSED COMMISSION WORK PLAN 2006 – 2010...Continued

**Vice Chair and Chair of WG 8.3 - "Mega Cities"**

Ioana Manalache – Romania (Nominated).

**Vice Chair and Chair of WG 8.4 - Disaster Management in a Global Village**

Seeking nominations

**Vice Chair and Chair of WG 8.5 – Renewable and Recyclables**

Irish delegate

**Vice Chair and Chair of WG 8.6 – Coastal Settlements and Climate Change**

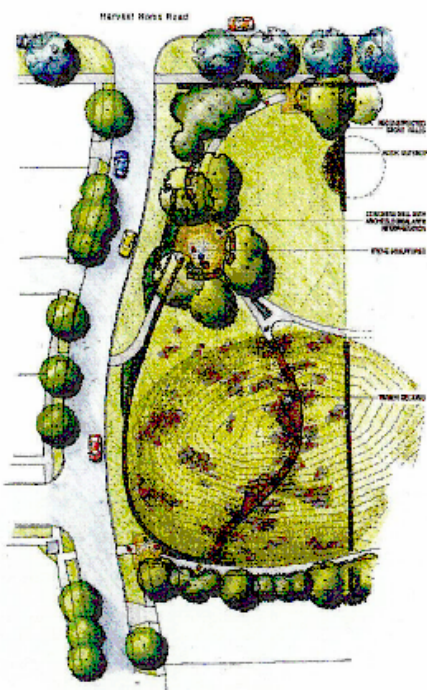
Isaac Boateng (nominated)

**FIG COMMISSION 8**  
**Spatial Planning & Development**

## 4. CASE STUDY 1 – VicUrban (State Government Urban Communities Development Agency)

### AURORA AT EPPING, VICTORIA, AUSTRALIA

With a maximum 6 Star Energy Efficiency Rating required, design of homes will maximise passive solar access, making them cheaper to run.



**LEGEND**

	Watercourse
	Planting
	Recreation Area
	Performance Arts
	Water Course
	Recreation
	Soil Battery

*Harvest Home Road and future park integration development plan. These plans are indicative only and subject to change.*

It is proposed that an extensive network of public open space and passive recreational areas within the development be irrigated using the recycled wastewater. In addition, Aurora will pilot a program that will focus on rainwater harvesting for domestic hot water use, further reducing the demands on Melbourne's precious drinking water supplies.

A more varied range of housing options than is available in most new growth areas will be offered. Higher density homes and apartments will be available near the town centres, with blocks becoming larger as the development moves further away from the retail hubs. The combination of housing density in Aurora will add to its community feel and allow for a diverse mix of residents.

Aurora is being planned with a strong emphasis on incorporating public transport links to the rest of Melbourne. The State Government, in its recent strategy for sustainable urban growth, Melbourne 2030, highlighted the potential to extend the Epping rail line - possibly even into the Aurora project. This, however, is subject to future government, budgetary and regulatory approvals.

**FIG COMMISSION 8**  
**Spatial Planning & Development**

# 4. CASE STUDY 1 – AURORA AT EPPING

...Continued

With the opportunity to purchase a house and land package, starting in late 2005, and the first residents expected to move into the community in late 2005, the future of sustainable living at Aurora is dawning.







## **4. CASE STUDY 2 – Africa**



**FIG COMMISSION 8**  
**Spatial Planning & Development**

## **5. OPPORTUNITIES**

Commission 8 can provide opportunities for professionals to gain international knowledge via collaboration, consultation and communication. The Commission will continue to provide the framework, however it is up to individuals/organisations to take the opportunities and advantages of getting involved in such items as WGs.