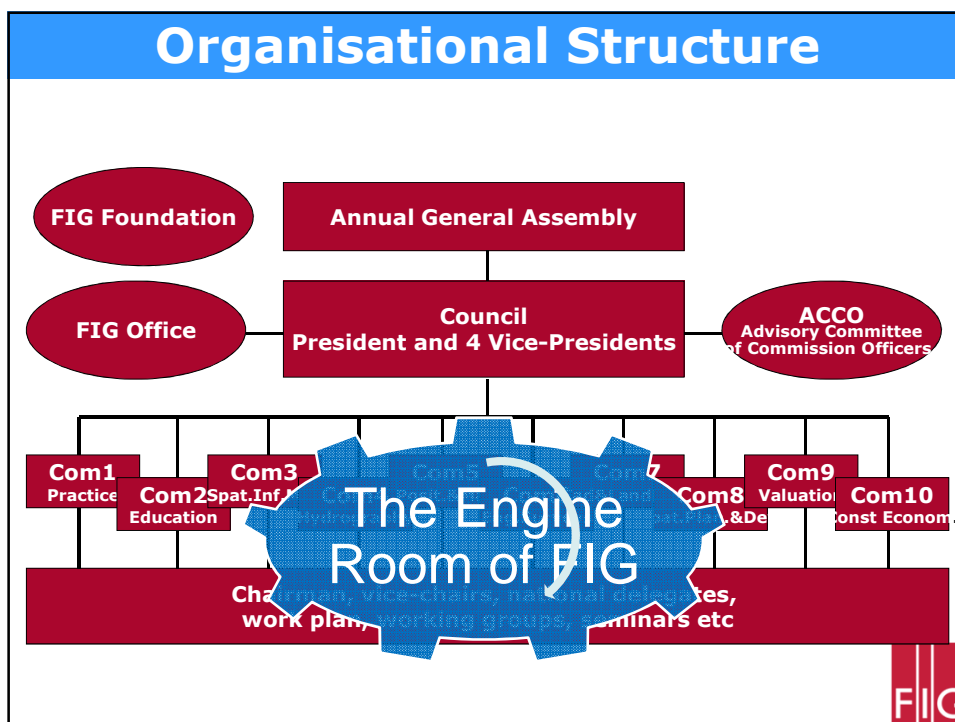


Council propose

FIG Task Force on FIG Commission Structure



Summary

- This Task Force has been set up to secure the internal structure of FIG into the future.
- Technology, methodology, work processes and more have changed significantly the last decades. Also, global trends as climate change and urbanisation are notable.
- The TF will not necessarily suggest a new structure. It will review the current structure, its terms of reference, the Commission's missions and suggest ideas on how to improve the capability of FIG and the Commissions to accomplish the work plans and most importantly how FIG will be a long term partner in the developing world. It will also discuss the process on how to elect commission chairs.



- The TF will use a unified, collaborative and consultative approach with all of FIGs members
- We are also asked to look into on how to have the Commissions to use the full FIG structure, corporate members included when accomplishing their work plan
- The task force will end at the latest at the next FIG Congress 2018
- We will use an active "core group" and encourage participation in the "reference group".



The task force is based on two proposals

Proposal from Geosuisse submitted 2014 regarding how commission chairs elect could be elected

Proposal regarding Structural Improvements submitted 2015 by

- Danish Association of Chartered Surveyors (Denmark)
- Finnish Association of Geodetic and Land Surveyors MIL (Finland)
- Norges Jordskiftekanidatforening, faglig gruppe av Tekna ([NJKF](#)) (Norway)
- Swedish professionals for the built environment



We should ...

- evaluate the current structure and function of the commission and hereafter conclude whether any changes are needed.
- and **if** it turns out that it might be advantageous to change the structure of the Commissions the Task Force will identify possible changes.



Some questions to ask in the process are:

- Do we have the right Commissions?
- Do the Commissions have the right focus?
- Do we have a mechanism for the Commissions to interact more actively with each other, FIG members or working groups from other organisations?
- Do we need to change? If we need, what should be changed and why?
- How do we manage and implement structural change?
- How do we secure that we have dedicated commission chairs



Task Force Members

- "Core group": A smaller number of persons that will actively contribute. Currently myself, Brian Coutts, Diane Dumashie, Henning Elmstrøm, Kate Fairlie, Brent Jones, Jurg Kaufmann, Robert Sarib. A few more will be added
- Reference Group: A larger number of interested people that will be asked to comment, discuss and contribute. If you are interested in being involved in the Reference Group, just let me know!



OPEN MEETING

Tuesday, 19 May @ 16:00–17:30
Hall 8.1/8.2, NPC

You are most welcome. Your thoughts on the current Commission structure, its strengths and weaknesses will be discussed and noted.

We will discuss IF (and why) a change is needed. We will also try to discuss strengths and weaknesses of the current structure.

