



# XXVII FIG CONGRESS

11-15 SEPTEMBER 2022  
Warsaw, Poland

*Volunteering  
for the future –  
Geospatial excellence  
for a better living*

## FIG GENERAL ASSEMBLY FINANCIAL REPORT

Louise Friis-Hansen  
4 September 2022

ORGANISED BY



PLATINUM SPONSORS



## AGENDA



### OVERALL FINANCIAL SITUATION 2021-2022

- Adopt audited accounts 2021
- Financial situation in 2022



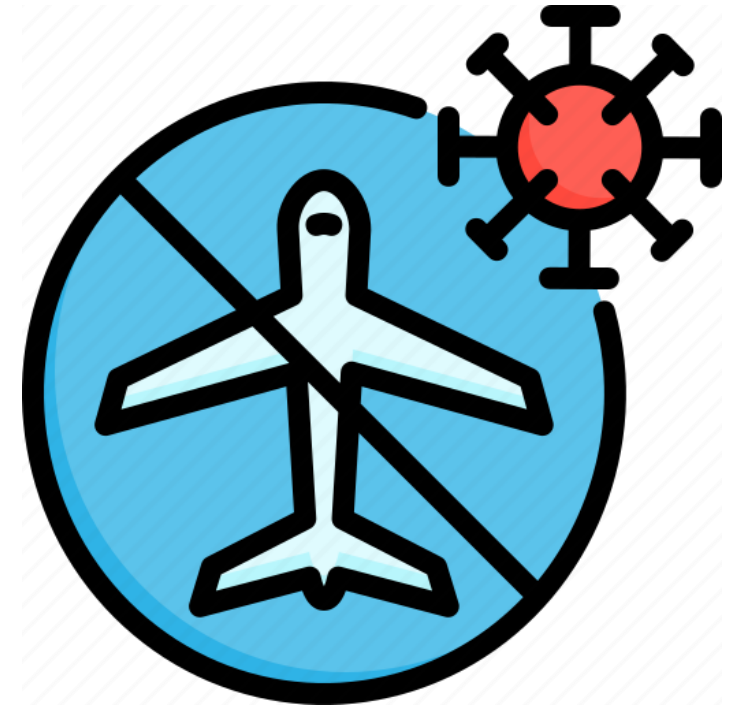
### BUDGET 2022-2025

- Member Association Subscriptions 2022 and 2023
- Budgets for 2021-2024



### REPORT FROM FIG OFFICE

## Situation in 2021







SMART SURVEYORS FOR LAND  
AND WATER MANAGEMENT  
CHALLENGES IN A NEW REALITY

No income – but expenses

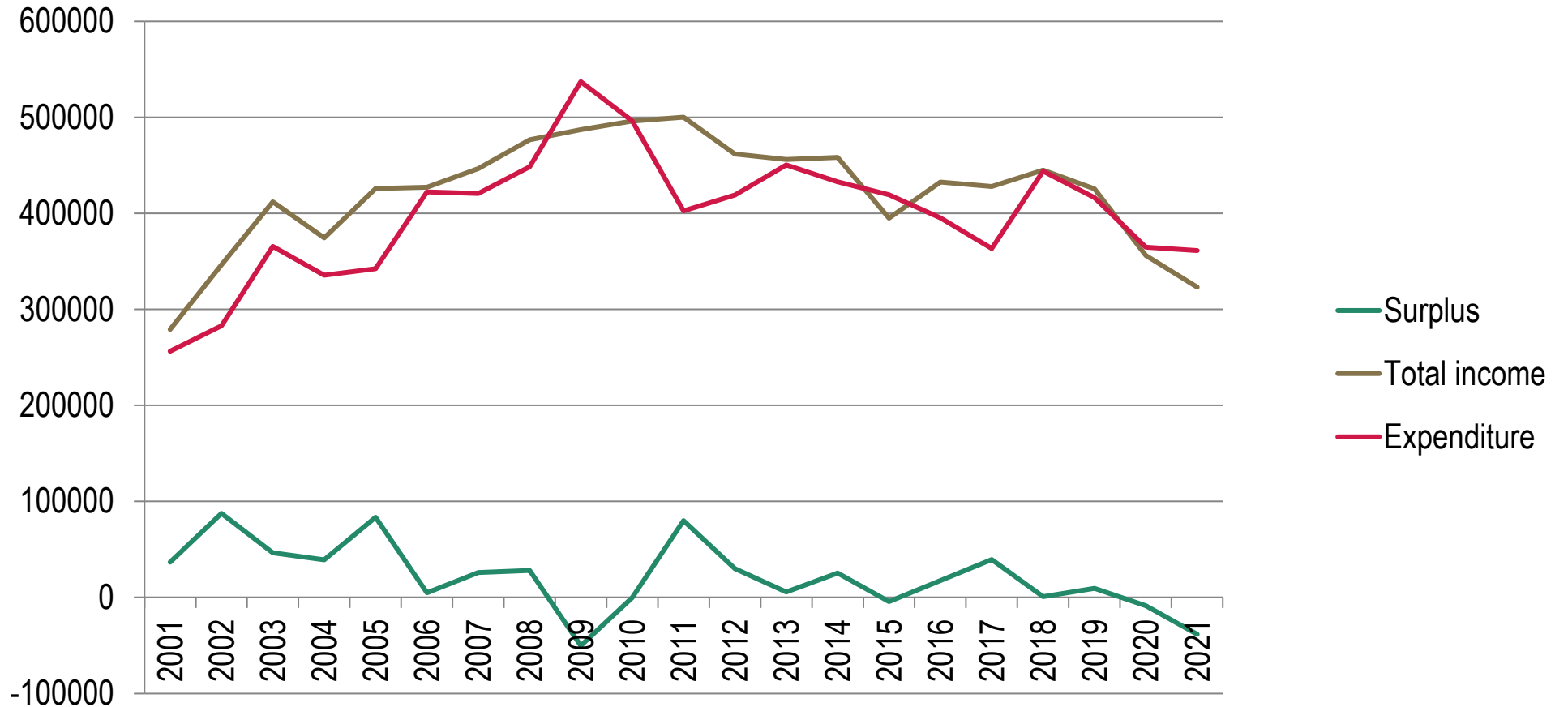


## Financial performance 2021-2022

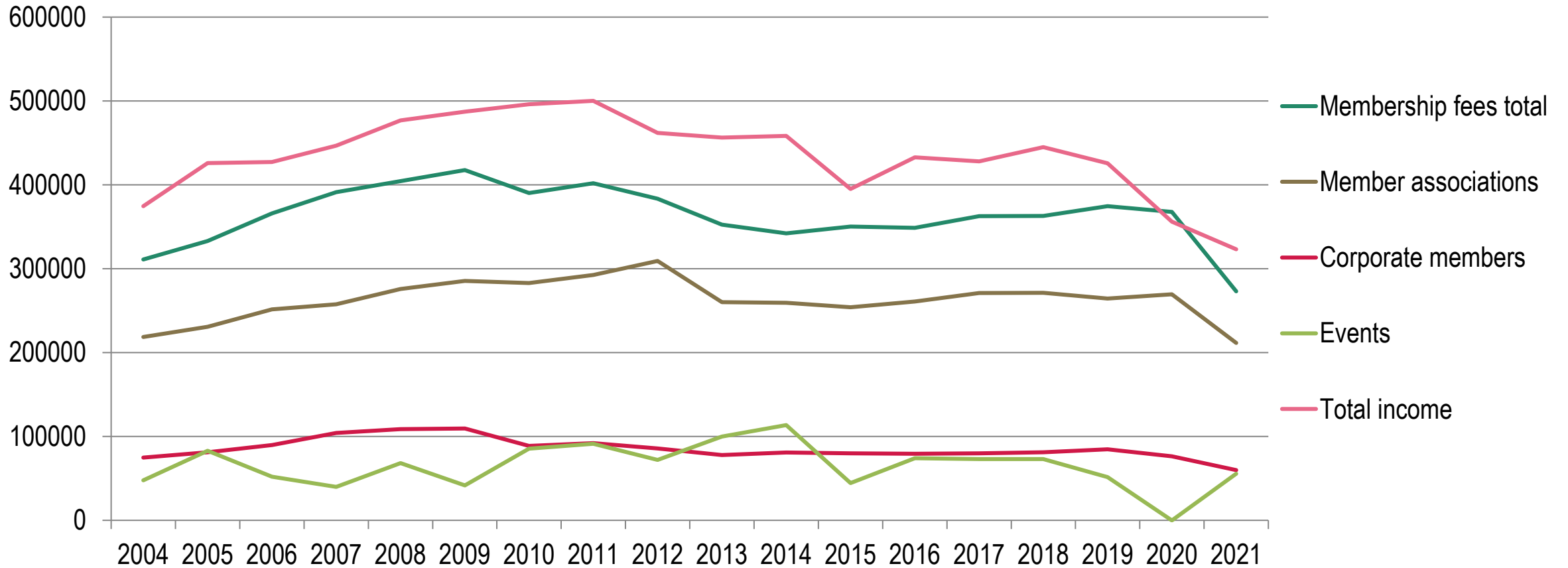
- Lower income – **IF** normal income then balanced result
- Lower expenditure – primarily fixed costs
- Expected high deficit – but much lower than budgeted (€ 38,000 instead of € 86,000)
- Very high write-offs (€ 34,000)
- Arrears still high
- Negative interest rate

Key figures	2021	
Surplus ordinary activities Key measure 1	- 49,015 (budget - 86,900)	
Overall surplus	- 38,267 (budget - 86,900)	
Subscription arrears	68,000 (2021: 81,000 2018: 49,000)	
Total reserve	567,160	
General reserve	129%	
- IT reserve	50,000	
- Events reserve	50,000	

## Overall situation and trends



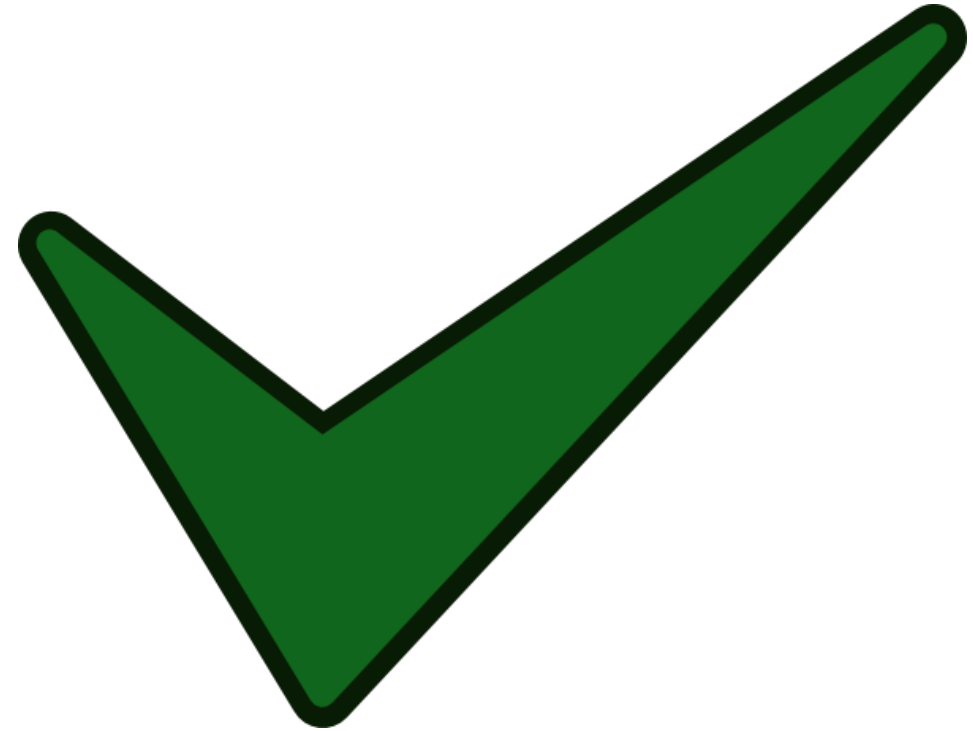
## Income over time





Auditors' opinion – true and fair view

Motion: that the GA adopts the audited accounts for 2021



## Subscriptions

- 2012-2018 – no change
- 2019: 7.1% increase
- 2020: 2019 level
- 2021: extraordinary 20% reduction for all members due to the COVID19 situation
- 2022 + 2023: 2019 level

**Council suggests to keep the 2019 level in 2024 despite increased inflation**

Year	Per capita fee	Minimum fee	Maximum fee
2024	<p>€4.80 per member up to a maximum of 5,500 members</p> <p>Member associations from countries listed by the World Bank as low-income economies or lower-middle-income economies shall pay €2.40 member up to a maximum of 5,500 members</p>	25 members or €50 (whichever is greater)	5,500 members (€26,400)


## BUDGET

### Key Measures:

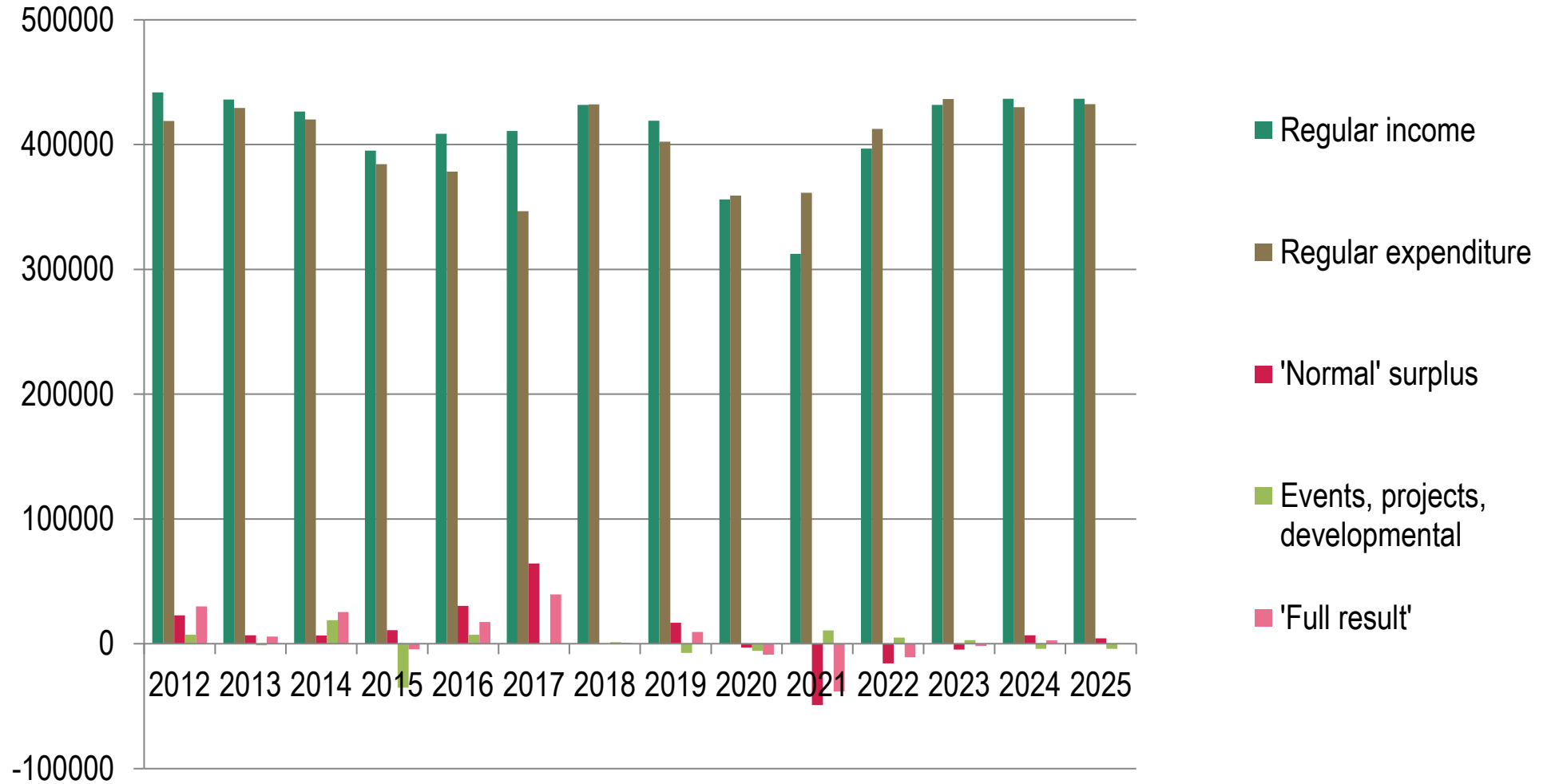
1. Regular income exceeds regular expenditure each year
2. An overall surplus is returned over the 4-year period
3. General reserve is 90-100% of regular annual Expenditure (using 4-year averaging of expenditure)



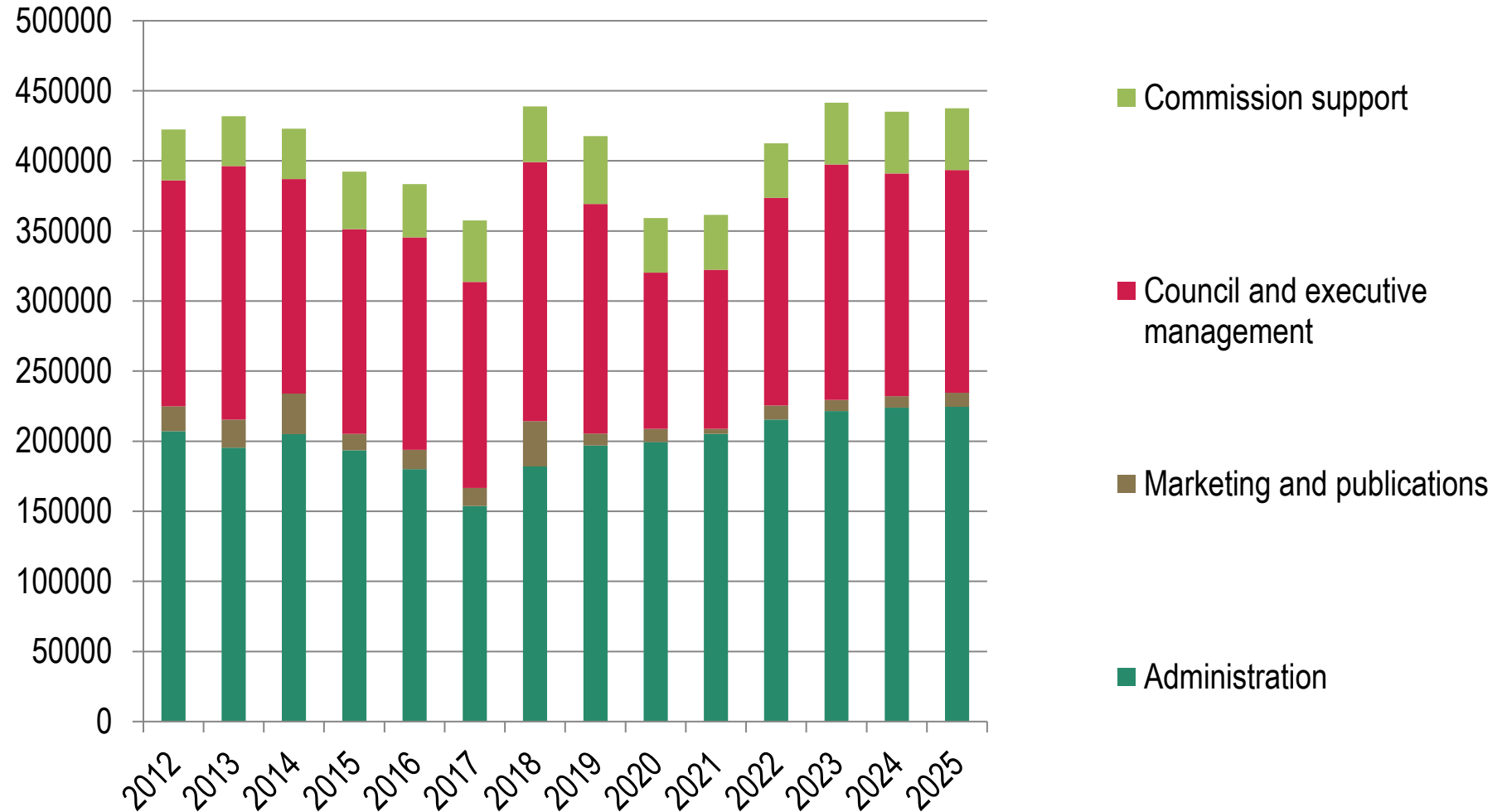
## Key issues

- Current economic situation (inflation) – negative impact
- Used part of the reserves in 2021 for the reduced subscription fee (but less than expected)
- Still high key measure 3 (General reserve 90-100% of regular annual expenditure)  
– but expected to decrease further over the coming years 
- Subscription rates – must be considered carefully
- Conference income – uncertain
- Administrative costs monitored carefully
- Budgeted deficits – key measures NOT met in the coming years
- New President – new council – few focus

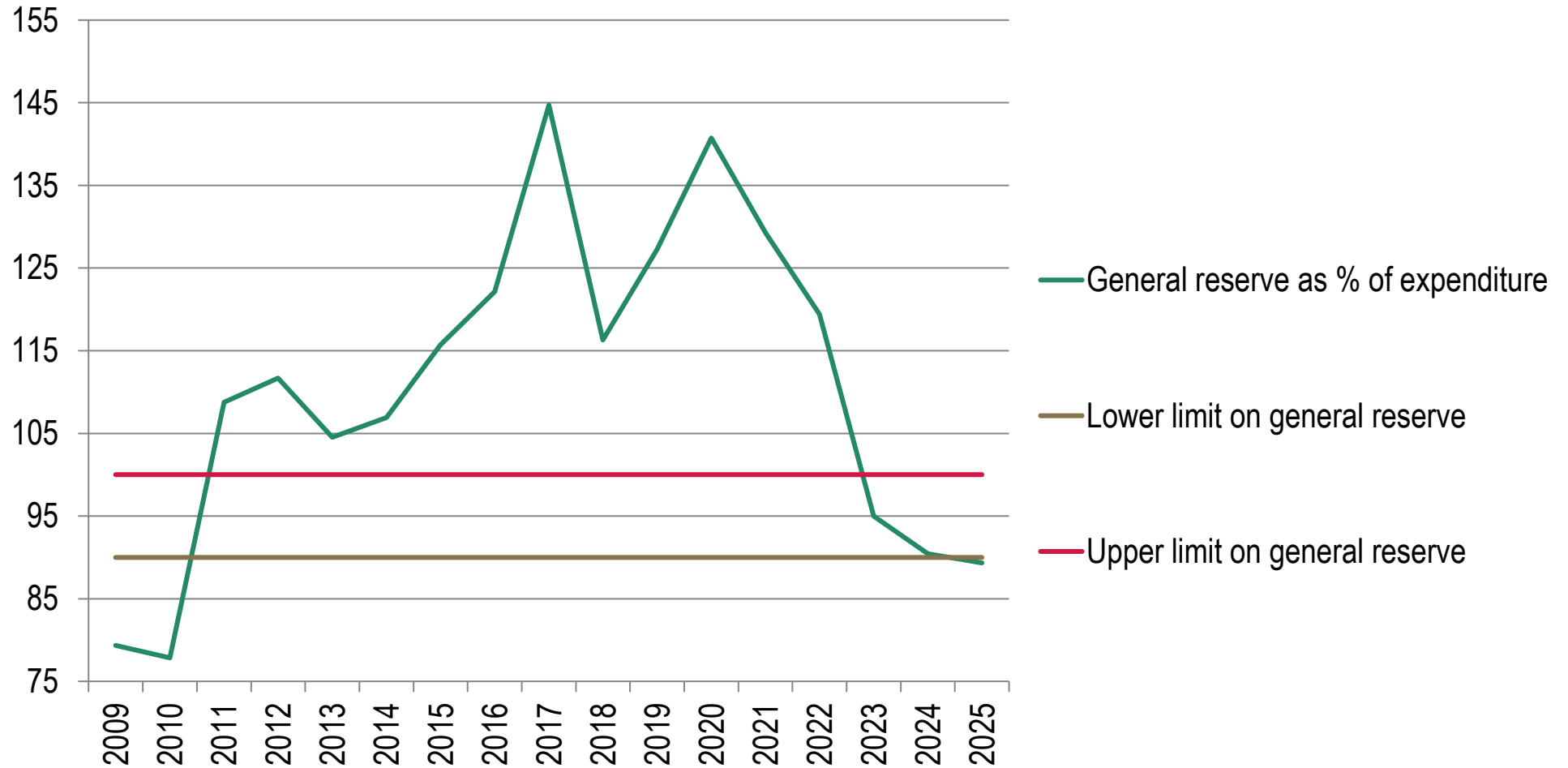
## Budget overview



## Expenditure analysis



## General reserve





## FIG Office



**Louise Friis-Hansen**  
Director  
Full time



**Claudia Stormoen Pedersen**  
Conference and Support Manager  
20h/week



**Maria Bargholz**  
Finance and Administration  
Full time / Oct 22: 28 h/week



**Nanna Jørgensen**  
FIG Event and Administrative Assistant  
August 2021-December 2021



**Evelien Hertz – van Gelder**  
FIG Event and Administrative Assistant  
Full time / Oct 22: 28 h/week

