

Landesvermessungsamt  
Nordrhein-Westfalen  
**Landesvermessungsamt Nordrhein-Westfalen**

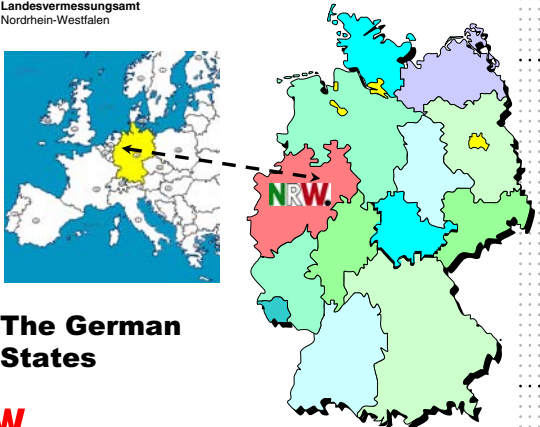


**SDI's as basic components  
of e-Government and e-Business  
- - The German approach - -**

**NRW.**

GSDI/FIG conference 2005, Cairo, 16 – 21 April 2004

Landesvermessungsamt  
Nordrhein-Westfalen



**The German States**

**NRW.**

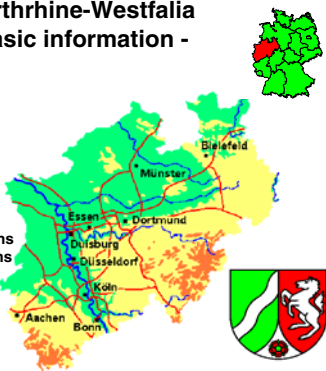
Landesvermessungsamt  
Nordrhein-Westfalen

**Northrhine-Westfalia  
- basic information -**

18 Mio inhabitants  
34,000 qkm area  
530 inhabitants / qkm

9 Mio parcels  
7 Mio buildings  
10 % updates / year

NRW Budget 1997: 90 billions  
BIP<sub>(nom)</sub>1995: 700 billions



**NRW.**

Landesvermessungsamt  
Nordrhein-Westfalen

**Northrhine-Westfalia  
- basic information -**

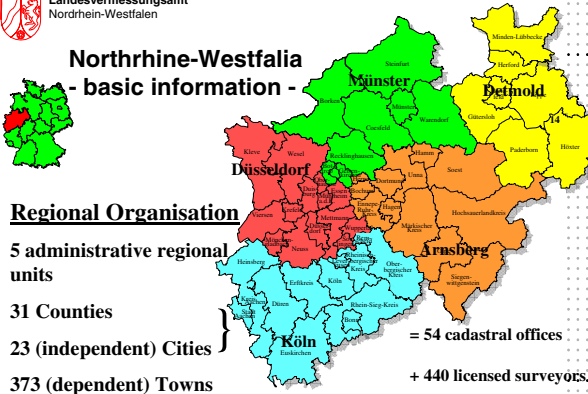
**Regional Organisation**

5 administrative regional units

31 Counties

23 (independent) Cities } = 54 cadastral offices

373 (dependent) Towns } + 440 licensed surveyors.



**NRW.**

Landesvermessungsamt  
Nordrhein-Westfalen

**State Surveying and Geoinformation as public tasks**

- Provision of spatial reference (Reference points, Reference stations, satellite positioning service, coordinate systems)
- Survey of geotopographical base data (TIM)
- Management of the geobasis information system (AFIS, ALKIS, ATKIS)
- Publication of the state map series
- Management of the state archives for aerial photos and maps
  - ⇒ connection to the cadastre
  - ⇒ public-private cooperation
  - ⇒ State surveying and geoinformation as public tasks
  - ⇒ public enterprise

**NRW.**

Landesvermessungsamt  
Nordrhein-Westfalen

**Official Geobasis Data**

- Terms „official“ and „Geobasis Data“
- Geobasis data of the States
- Geobasis data of the Federation
- Geobasis data of the Municipalities
- „official“ business processes

**NRW.**

Landesvermessungsamt  
Nordrhein-Westfalen

## Basic Geoinformation in Germany

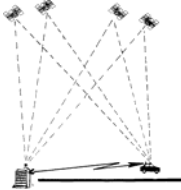
- ❑ Satellite Positioning System (**SAPOS**)
- ❑ Official Reference Point Information System (**AFIS**)
- ❑ Authoritative Topographic-Kartographic Information System (**ATKIS**)
- ❑ Official Cadastre Information System (**ALKIS**)

**NRW.**


Landesvermessungsamt  
Nordrhein-Westfalen

**SAPOS®**  
Satellite Positioning Service


## Permanent GPS-Reference stations of Survey Administration



Reference points



Navigation  
Fleet management



Cadastral

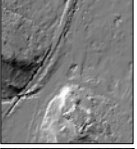
... realize the spatial reference system of the survey administration by providing satellite data und correcting information for differential measuring methods

**NRW.**


Landesvermessungsamt  
Nordrhein-Westfalen

## Products


*of Surveying & Mapping Agency NRW*




- Elevation Models



- Analog Landscape Models -



- Image Models




- Digital Landscape Models -

**NRW.**


Landesvermessungsamt  
Nordrhein-Westfalen

## Services


*of Surveying & Mapping Agency NRW*




- Geodetic Reference



- Topographic Change Detection -



- Cartography & Reproduction




- Know How Transfer -

**NRW.**


Landesvermessungsamt  
Nordrhein-Westfalen

## Geodata centre


*of Surveying & Mapping Agency NRW*




- Cadastral Data



- Address Reference -

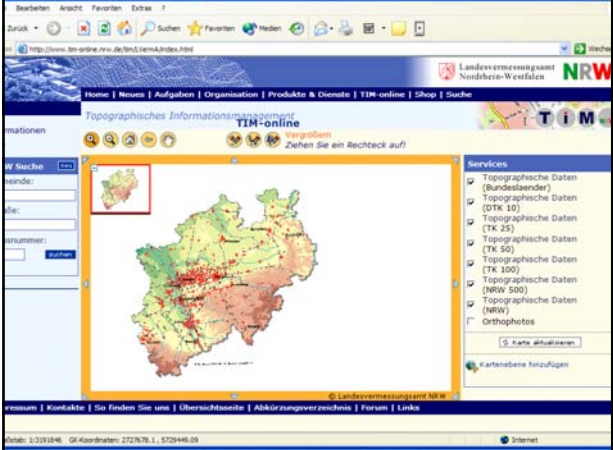


- Standard Values of Real Estate

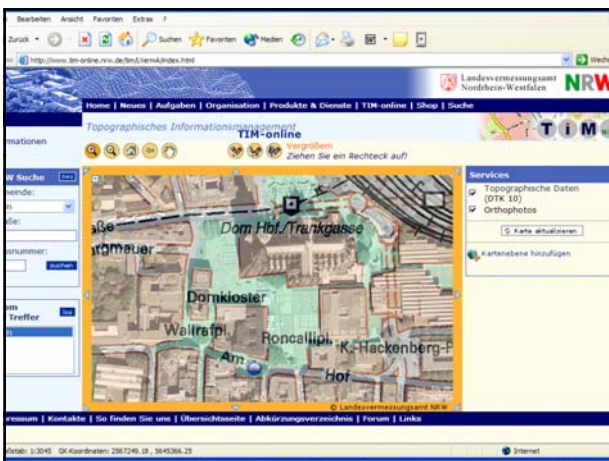
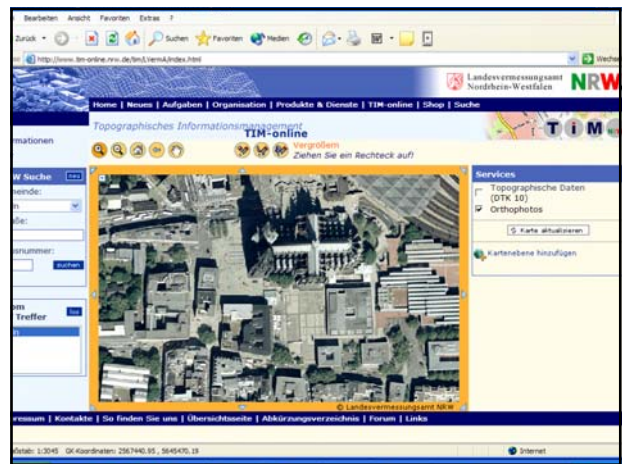
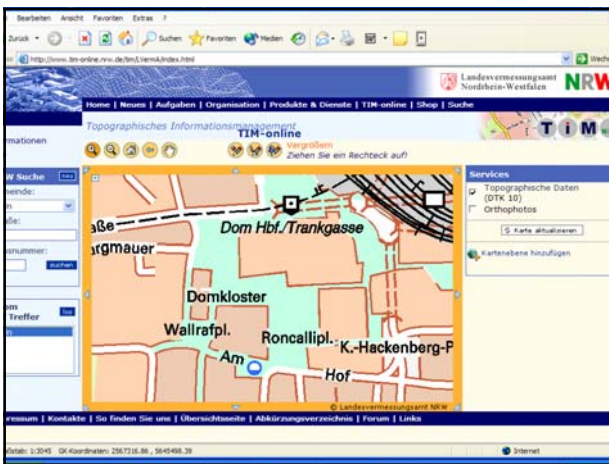
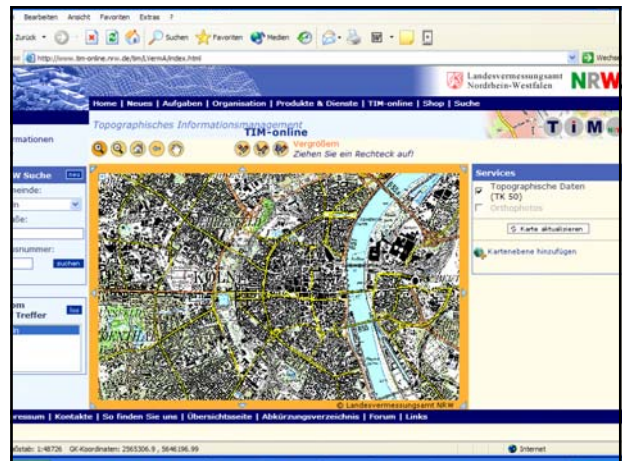
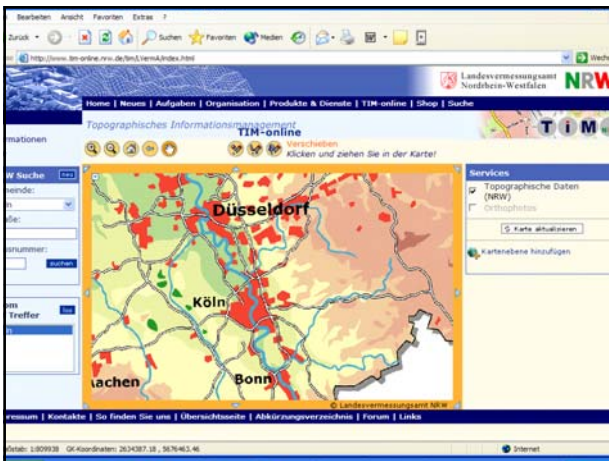



- Landscape Models -

**NRW.**



The screenshot shows the TIM-online web application interface. It features a search bar, a navigation menu, and a central map of North Rhine-Westphalia. On the right side, there is a 'Services' panel with a list of data layers including 'Topographische Daten (Bundeslaender)', 'Topographische Daten (DTK 10)', 'Topographische Daten (TK 25)', 'Topographische Daten (TK 50)', 'Topographische Daten (TK 100)', 'Topographische Daten (Netz 500)', and 'Topographische Daten (NRW)'. There is also an option for 'Orthophotos' and a 'Kartenebene hinzufügen' button.







Landesvermessungsamt  
Nordrhein-Westfalen

## Products


### Building reference points NRW




Landesvermessungsamt  
Nordrhein-Westfalen



- Polizei
- BORIS (Bodenrichtwertinformationssystem)
- ÖPNV



NRW GeoDatZ.NRW



NRW

