

APPLANIX  
A TRIMBLE COMPANY

## Optimizing the Digital Processing Workflow Using Direct Georeferencing

Mohamed M.R. Mostafa  
Chief Technical Authority  
Airborne Systems

**FIG Cairo, 2005**

FIG Working Week, Cairo, 2005      www.applanix.com      21 April, 2005

APPLANIX  
A TRIMBLE COMPANY

## Outline

- Overview
- Data Flow
- Quality Control

FIG Working Week, Cairo, 2005      www.applanix.com      21 April, 2005

APPLANIX  
A TRIMBLE COMPANY

## Applanix Corporation

**Applanix Today**

- Head Office - 100 people, Richmond Hill, Ontario
- World Renowned in-house expertise in GPS/Inertial Technology
- Global operations: offices in USA, Germany, and UK, with agents worldwide
- Over **600 POS systems sold** -> **300+ POS AV** systems
- Created the market of using GPS/inertial for aerial surveys in 1994
- A Subsidiary of Trimble Navigation


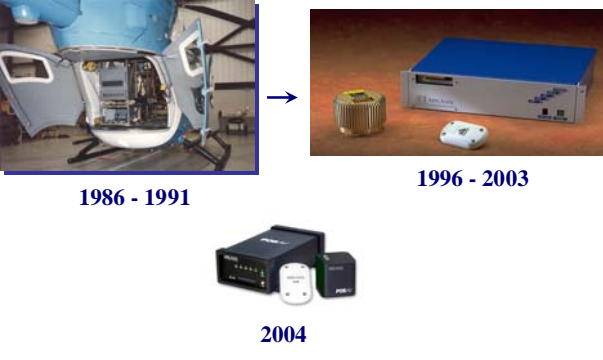


FIG Working Week, Cairo, 2005      www.applanix.com      21 April, 2005

APPLANIX  
A TRIMBLE COMPANY

## POS System Evolution

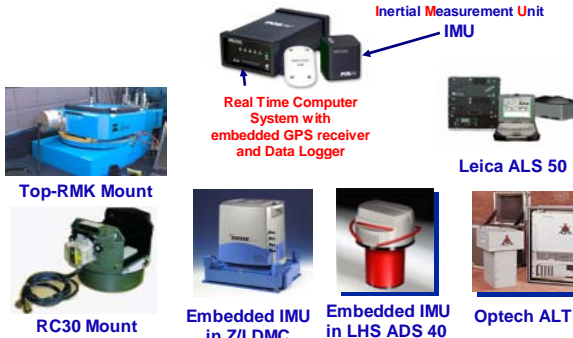


1986 - 1991      1996 - 2003      2004

FIG Working Week, Cairo, 2005      www.applanix.com      21 April, 2005

APPLANIX  
A TRIMBLE COMPANY

## Direct Georeferencing Systems in Survey Practice



Inertial Measurement Unit  
IMU

Real Time Computer System with  
embedded GPS receiver  
and Data Logger

Leica ALS 50

Top-RMK Mount      RC30 Mount      Embedded IMU in Z/I DMC      Embedded IMU in LHS ADS 40      Optech ALTM

FIG Working Week, Cairo, 2005      www.applanix.com      21 April, 2005

APPLANIX  
A TRIMBLE COMPANY

## What is Image Georeferencing

**Direct Georeferencing**

1. Measure translation and rotation (EO) using Navigation Sensors
2. Produce Orthophoto or collect features on stereopairs
3. No GCP needed
4. QC is needed

**Indirect Georeferencing**

1. Survey GCPs
2. Measure image points
3. Compute translation and rotation using AT
4. Produce 3D Coordinates of ground Points

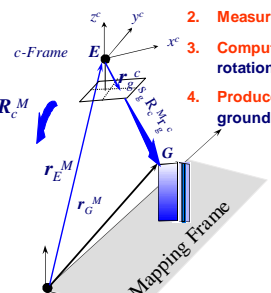
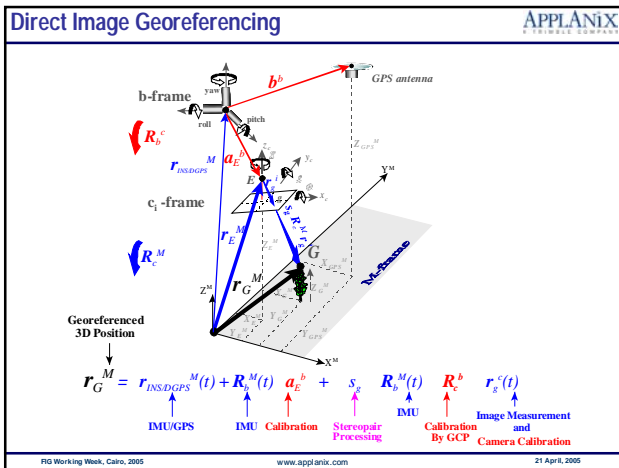


FIG Working Week, Cairo, 2005      www.applanix.com      21 April, 2005



### The Digital Sensor System (DSS)

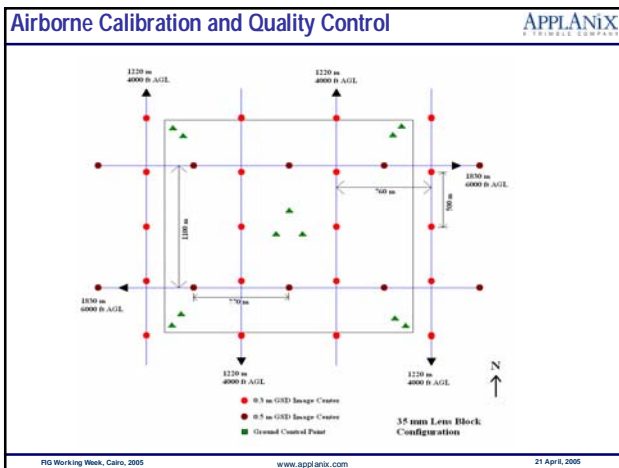
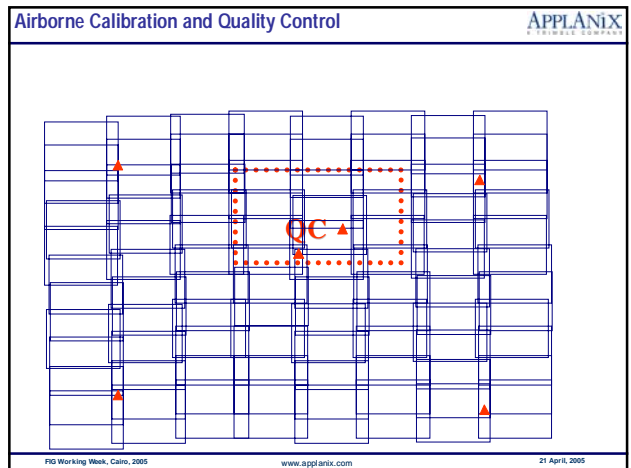
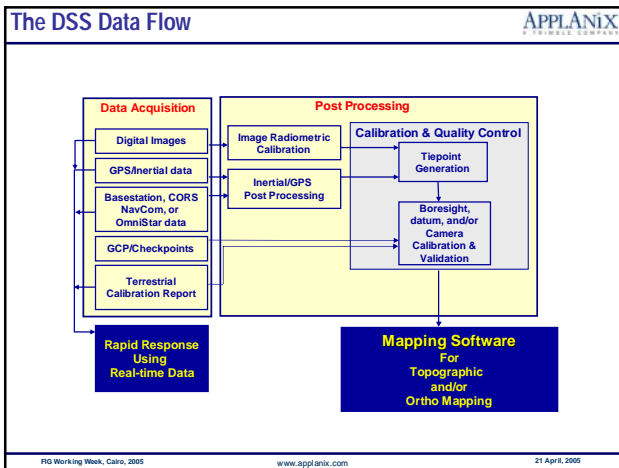
Complete Mapping System

- turn-key
- fully-digital
- medium format

- Built-in FMS
- Integrated POS AV Aided Inertia Direct Georeferencing System
- 4k by 4k Color and CIR Digital Imager
- Azimuth Mount (new)
- Ruggedized data logger and pressurized drive

POS AV  
4k x 4k Camera  
Flight Management System  
Azimuth Mount

FG Working Week, Cairo, 2005 www.applanix.com 21 April, 2005



### Boresight Calibration

Direction of Flight

Camera Frame

IMU Frame

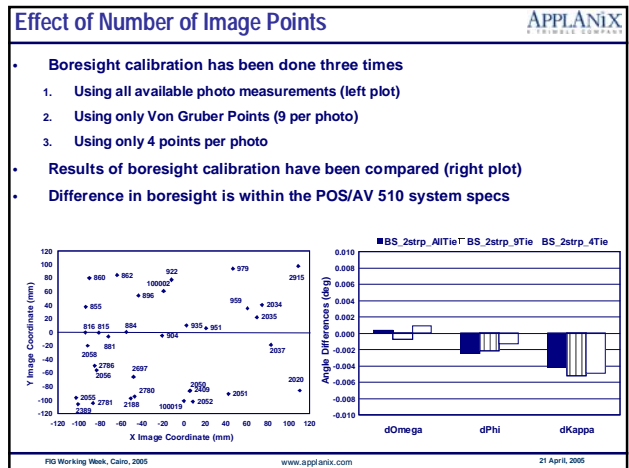
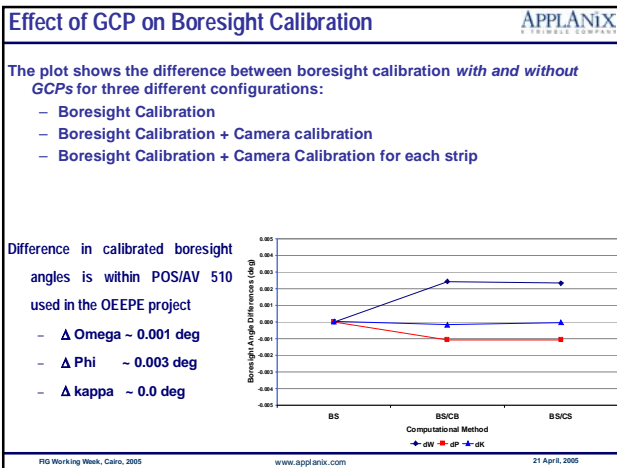
Flight Direction

- Boresight is the physical mounting angles of an IMU w.r.t. a camera
- Boresight is assumed constant matrix at all times
- Boresight is computed using:
  - Image rotation matrix computed by photogrammetry
  - IMU-derived rotation matrix
- How well the imaging geometry is established (camera calibration?)
- Correlation between the camera calibration and boresight ???
- This necessitates the simultaneous calibration of boresight and camera

$$R_c^i = \begin{bmatrix} 1 & 0 & 0 \\ 0 & \cos \theta_2 & \sin \theta_2 \\ 0 & -\sin \theta_2 & \cos \theta_2 \end{bmatrix} \begin{bmatrix} \cos \theta_1 & 0 & -\sin \theta_1 \\ 0 & 1 & 0 \\ \sin \theta_1 & 0 & \cos \theta_1 \end{bmatrix} \begin{bmatrix} \cos \theta_3 & \sin \theta_3 & 0 \\ -\sin \theta_3 & \cos \theta_3 & 0 \\ 0 & 0 & 1 \end{bmatrix}$$

$$= \begin{bmatrix} \cos \theta_1 \cos \theta_2 & \cos \theta_1 \sin \theta_2 & \sin \theta_1 \\ \sin \theta_1 \sin \theta_2 \cos \theta_3 - \cos \theta_1 \sin \theta_2 & \sin \theta_1 \sin \theta_2 \sin \theta_3 + \cos \theta_1 \sin \theta_2 & \sin \theta_1 \cos \theta_2 \\ \cos \theta_1 \sin \theta_2 \cos \theta_3 + \sin \theta_1 \sin \theta_2 & \cos \theta_1 \sin \theta_2 \sin \theta_3 - \sin \theta_1 \sin \theta_2 & \cos \theta_1 \cos \theta_2 \end{bmatrix}$$

FG Working Week, Cairo, 2005 www.applanix.com 21 April, 2005



### Airborne Calibration and Quality Control software

Calibration & Quality Control Software is equipped with:

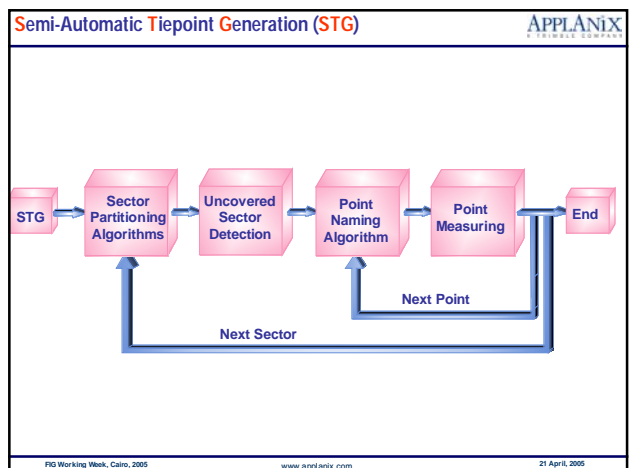
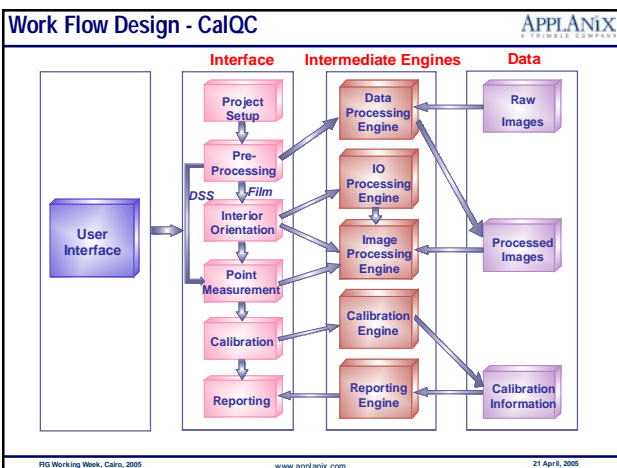
- Online Calibration of boresight, camera, and datum
- Imports
  1. image coordinates from any AAT software
  2. POS Data
- Generates its own tie points using STG (semi-automatic Tiepoint Generation) Engine

FG Working Week, Cairo, 2005      www.applanix.com      21 April, 2005

### Airborne Calibration and Quality Control - Auto IO

- Software Tools Work for:
  - Digital Camera
  - Scanned Film

FG Working Week, Cairo, 2005      www.applanix.com      21 April, 2005



### The DSS Performance

The Performance of the DSS is discussed using results from five test flights

Flight ID	Flight Altitude AGL (m)	GSD (m)	#Strips/Photos	# Checkpoints
Lakeland Dec02	2000	0.3	6/65	37
NASA Stennis	2000	0.3	12/242	96
Japan Feb03	1300-1900	0.2-0.3	5/41	60
Ajax 03	1200	0.2	9/165	46
PASCO Toyonaka	300	0.05	6/150	16

FIG Working Week, Cairo, 2005      www.applanix.com      21 April, 2005

### Statistical Summary of Different Test Flights

Accuracy of Checkpoints is repeatable - sub-pixel in horizontal and 2-3 pixels in elevation (Geometry)

FIG Working Week, Cairo, 2005      www.applanix.com      21 April, 2005

### Statistical Summary of Different Test Flights

Same results are repeatedly achieved using a 35 mm lens

FIG Working Week, Cairo, 2005      www.applanix.com      21 April, 2005

### Georeferencing The DMC Images Using POS

FIG Working Week, Cairo, 2005      www.applanix.com      21 April, 2005

### Georeferencing The DMC Images - An Example

Property Name	Value
Photo ID	4*24
Image(s)	F:\imagery\San_Juan_River_Flight\San_Juan_4*

	Block F	F-Strip
Flight Height (m)	2,000	2,000
GSD (m)	0.25	0.25
Number of strips	4	1
Number of photos	207	39
Number of SV Control	6.99	41.5
A priori Std dev of image point (um)	5	5
A priori Std dev of control (m)	0.1	0.1
A priori Std dev of GFS (m)	0.2	0.2
A priori Std dev of DSS (deg)	0.1	0.1

Madani, M., M.M.R. Mostafa, 2004. Georeferencing the DMC Images - Data Flow and Performance Analysis. Proceedings, ASPRS Annual Conference, Denver, CO, May 22-28. CD-ROM

FIG Working Week, Cairo, 2005      www.applanix.com      21 April, 2005

### Georeferencing The DMC Images - Results

Remaining Errors are well within the GSD  
Remaining Errors include POS errors, image measurement errors, calibration errors, etc..

Property Name	Value
Min	0.0
Max	11.9
Mean	2.5
RMS	3.1

Madani, M., M.M.R. Mostafa, 2004. Georeferencing the DMC Images - Data Flow and Performance Analysis. Proceedings, ASPRS Annual Conference, Denver, CO, May 22-28. CD-ROM

FIG Working Week, Cairo, 2005      www.applanix.com      21 April, 2005

Thank you for your attention!