

EUROPEAN COMMISSION  
Joint Research Centre

**Infrastructure for Spatial Information in Europe (INSPIRE)**

Alessandro Annoni  
European Commission  
Joint Research Centre  
Institute for Environment and Sustainability

GSDI-8 21 Apr. 2005

ies

EUROPEAN COMMISSION  
Joint Research Centre

**The EU Institutions**

Court of Auditors  
The European Parliament  
The Council of Ministers  
Committee of the Regions  
Court of Justice  
Economic and Social Committee

European Commission  
25 Commissioners

Mr Janez POTOČNIK  
European Commissioner for Research

DG RESEARCH  
DG JRC  
.....  
DG ENVIRONMENT  
OTHER DGs

GSDI-8 21 Apr. 2005

ies

EUROPEAN COMMISSION  
Joint Research Centre

**JRC's Mission**

... to provide customer-driven scientific and technical support for the conception, development, implementation and monitoring of EU policies ...

...the JRC functions as a reference centre of science and technology for the EU, independent of private and national interests...

GSDI-8 21 Apr. 2005

ies

EUROPEAN COMMISSION  
Joint Research Centre

**Memorandum of understanding between Commissioners Wallström, Solbes, Busquin**  
11 April 2002

The European Sustainable Development Strategy advocates a new approach to policy-making through more coherence in the Community policies. An information base that provides detailed relevant harmonised spatial information for different policy areas and that is commonly accessible could significantly contribute to this objective.

Currently, exploitation of the potential of GI is hampered by lack of standards, of data and of a coherent data policy. A Community initiative to address these difficulties could unlock a vast potential of information and information services...

Standardisation of GI services would furthermore open up new ways of communication, narrowing the gap between Europe and its citizens.

GSDI-8 21 Apr. 2005

ies

EUROPEAN COMMISSION  
Joint Research Centre

**Commissioner Dimas**  
The 3rd Earth Observation Summit  
16 February 2005

Natural and human-induced disasters, environment and health, climate change, sustainable management of water, energy, ecosystems, land, agriculture and biodiversity are currently at the top of the environment and sustainable development agendas.

The scale of these problems is simultaneously global, regional and local ...

The basic point is that good policy needs good knowledge ...

The EU has already demonstrated its firm commitment by establishing policies and systems through the INSPIRE directive which will allow us to share information more efficiently

GSDI-8 21 Apr. 2005

ies

EUROPEAN COMMISSION  
Joint Research Centre

**Overall context**

- Increasing calls for more information to support environmental policies **at European and MS level**
- Difficulties to **manage existing information** flows and obtain timely, accurate and policy-relevant information
- Need to take into account **differentiation across regions** with respect to the state of the environment
- Revision of approach to reporting and monitoring, moving to concept of **sharing of information**

↓

**EC Proposal COM(2004) 516 for a Directive establishing an infrastructure for spatial information in the Community - INSPIRE**

GSDI-8 21 Apr. 2005

ies

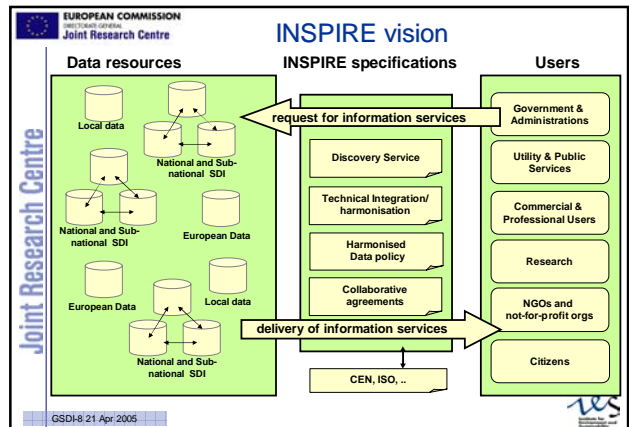
EUROPEAN COMMISSION  
Joint Research Centre

### Proposal INSPIRE Framework Directive General Provisions

- INSPIRE lays down general rules for the establishment of an infrastructure for spatial information in Europe to support:
  - environmental policies and
  - policies that affect the environment
- This infrastructure shall be based on infrastructures for spatial information established and operated by the Member States.

According to the INSPIRE proposal the infrastructure includes: **metadata, spatial data sets and services; network services; agreements on sharing, access and use; coordination and monitoring mechanisms, processes and procedures.**

GSDI-8 21 Apr. 2005



EUROPEAN COMMISSION  
Joint Research Centre

### INSPIRE principles

- spatial data should be collected once and maintained at the level where this can be done most effectively
- it must be possible to combine seamlessly spatial data from different sources across the EU and share it between many users and applications
- it must be possible for spatial data collected at one level of government to be shared between all the different levels of government
- spatial data needed for good governance should be available on conditions that are not restricting its extensive use
- it should be easy to discover which spatial data is available, to evaluate its fitness for purpose and to know which conditions apply for its use.

GSDI-8 21 Apr. 2005

EUROPEAN COMMISSION  
Joint Research Centre

### Overview of requirements

- metadata\*
- spatial data sets and spatial data services\*
- network services\*
  - EU geo-portal
- agreements on sharing, access and use
- co-ordination and monitoring mechanisms
- process and procedures

\* technical: under JRC responsibility

GSDI-8 21 Apr. 2005

EUROPEAN COMMISSION  
Joint Research Centre

### INSPIRE Process ( long one... -:) but needed ! Bottom-up Stakeholder Involvement

– Building consensus in expert groups	-----	2001
• Orientation and Position papers of experts		2002
• Establishing the state-of-play		
– Preparing the proposal -> A Framework Directive	-----	2003
• Scoping policy measures with expert advice		
• Assessing the political and socio-economic impact		
• A public review of the proposed measures		
– Adoption of the Framework Directive by the Commission	----	2004
– The proposal on the political agenda of the EU Presidency		
– Co-Decision Procedure by Council and Parliament		2004-6
– Adoption of the Framework Directive	-----	2007-8
– Transposing the Framework Directive		
– Implementing the Framework Directive	-----	2009-13

GSDI-8 21 Apr. 2005

EUROPEAN COMMISSION  
Joint Research Centre

### Background

- From Commission proposal to Community Directive implementation - 3 phases:
  - Preparatory phase (2004-2006)
    - Co-decision procedure
  - Preparation of Implementing Rules
  - Transposition phase (2007-2008)
    - Directive enters into force
    - Transposition into national legislation
    - INSPIRE Committee starts its activities
    - Adoption of Implementation Rules by Committology
  - Implementation phase (2009-2013)
    - implementation and monitoring of measures

GSDI-8 21 Apr. 2005

EUROPEAN COMMISSION  
Joint Research Centre

## How to implement INSPIRE ?

- Transposition of the Directive into national legislation
- Commitology
  - Establishing Draft Implementing Rules
  - Discussion of Draft Implementing Rules in the Regulatory Committee
  - Implementing Rules to be consolidated as a Commission Regulation/Decision

GSDI-8 21 Apr. 2005

EUROPEAN COMMISSION  
Joint Research Centre

## INSPIRE Roadmap (...)

Based on the hypothesis  
2 years for co-decision process

Mile-stone	Mile-stone	Description
2007	X	Entry into force of INSPIRE Directive
2007	X+3m	Establishment of the INSPIRE Committee
2007	X +1y at latest	Adoption of Implementing Rules for the creation and up-dating of the <b>metadata</b> Adoption of Implementing Rules for <b>network services</b> Adoption of Implementing Rules on third parties use of the <b>upload services</b> Adoption of Implementing Rules for <b>monitoring and reporting</b> Adoption of Implementing Rules governing <b>access and rights of use to spatial data sets and services for Community institutions and bodies</b>
2009	X + 2y at latest	Adoption of Implementing Rules for the <b>use of spatial data sets and services by third parties</b>
2009	X + 2y	Adoption of Implementing Rules for <b>harmonised spatial data specifications</b> and for the <b>exchange of Annex I spatial data</b>

GSDI-8 21 Apr. 2005

EUROPEAN COMMISSION  
Joint Research Centre

## Roadmap (2/3)

Mile-stone	Mile-stone	Provisions of Directive are brought into force in MS (transposition date)
2009	X + 2y	Designation of <b>responsible public authorities</b> for spatial data sets and services
2009	X + 2y	Implementation of <b>sharing framework</b> of spatial data sets and services between public bodies
2009	X + 2y	Implementation of provisions on <b>monitoring</b>
2009	X + 2y	<b>Network services</b> are operational
2010	X + 3y	<b>Metadata</b> available for spatial data corresponding to <b>Annex I</b> and <b>Annex II</b> spatial data
2010	X + 3y	Member States' <b>First Report</b> to the Commission. From then onwards MS have to present reports every 3 years

GSDI-8 21 Apr. 2005

EUROPEAN COMMISSION  
Joint Research Centre

## Roadmap (3/3)

Mile-stone	Mile-stone	Provisions of Directive are brought into force in MS (transposition date)
2011	X + 4y	<b>New or updated spatial data</b> sets available in accordance with Implementing Rules for <b>harmonised spatial data specifications</b> and <b>exchange for Annex I</b> spatial data
2012	X + 5y	Adoption of Implementing Rules for <b>harmonised spatial data specifications</b> and for the <b>exchange of Annex II and Annex III</b> spatial data
2013	X + 6y	<b>Metadata</b> available for <b>Annex III</b> spatial data
2014	X + 7y	New or updated spatial data sets available in accordance with Implementing Rules for harmonised spatial data specifications and <b>exchange for Annex II and Annex III</b> spatial data
2014	X + 7y	Commission's <b>report to the EP and the Council</b> . From then onwards the Commission has to present reports every 6 years

GSDI-8 21 Apr. 2005

EUROPEAN COMMISSION  
Joint Research Centre

## Action Plan 2005-2006

- On the basis of the **INSPIRE Roadmap**
  - first priority actions are needed with regard to the deliverables at the 2007 milestone
  - in second priority actions are linked to milestone deliverables in 2008-2009, but for which more time is required to develop them (e.g. harmonised data specifications)

GSDI-8 21 Apr. 2005

EUROPEAN COMMISSION  
Joint Research Centre

## The broader context

- The implementation of INSPIRE needs to consider the broader context of existing initiatives which could contribute to ESDI
- The INSPIRE Work Programme should interface with those partnerships and initiatives where relevant and establish synergy
- **SDIC** bundle the human expertise of users, producers and transformers of spatial information, technical competence, financial resources and policies. Many SDIC exist today, generally organised by region, thematic issue or sector (industry).

**concept of Spatial Data Interest Communities (SDIC)**

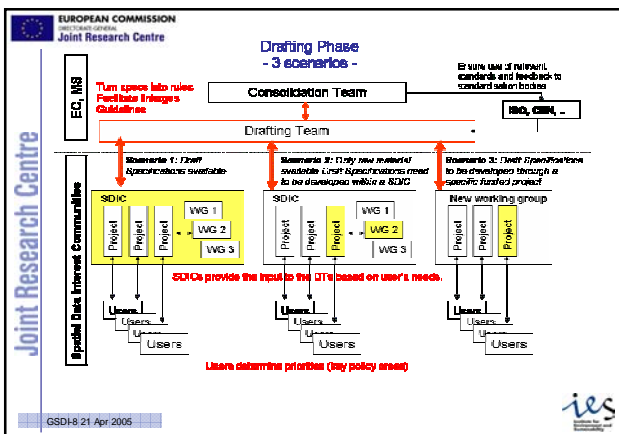
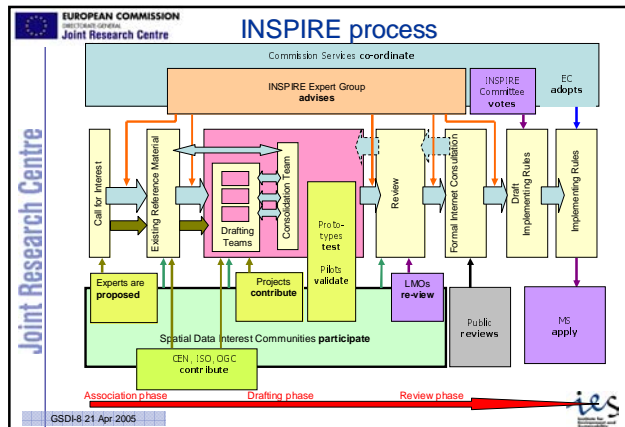
GSDI-8 21 Apr. 2005

EUROPEAN COMMISSION  
Joint Research Centre

## SDICs: possible roles in INSPIRE development

- collect and describe user requirements,
- submit/develop reference materials
- allocate experts to the drafting teams,
- participate in the review process,
- implement pilot projects
  - to test/revise/develop the draft Implementing Rules,
- make cost/benefit analysis
  - to assess costs of the draft Implementing Rules,
- contribute to awareness raising and training

GSDI-8 21 Apr. 2005



EUROPEAN COMMISSION  
Joint Research Centre

## Existing communities & infrastructures

- International Hydrographic Organisation (IHO)
  - (IHO S-57) is the IHO Transfer Standard for Digital Hydrographic Data.
- Eurogeographics
  - Association of National Mapping and Cadastral Agencies
  - SABE, GlobalMap, RegioMap, Eurospec
- Eurogeosurveys
  - Association of the Geological Surveys of the European Union
  - GEIXS- European Geological Data Resource (standard metadata based on CEN profile),
- European Soil Bureau
  - Network of the National Soil Institutes of the European Union
  - European Soil Information System [(standard metadata based on CEN profile)]
- EUMETNET
  - a network grouping 20 European National Meteorological Services
  - WMO Manual on the Global Observing System
  - The future WMO Information System (FWIS)
- EIONET (EEA)
- National Statistical Offices (Eurostat)

GSDI-8 21 Apr. 2005

EUROPEAN COMMISSION  
Joint Research Centre

## Outlook

- Call for expression of interest
  - SDIC (continuously open)
  - Experts proposals (1<sup>st</sup> Phase 11/03-29/04)
- INSPIRE Expert Group meeting (end June)
  - Drafting Teams Set-up
  - Consolidation Team Set-up
- 11 EC GI&GIS ws (end June)
  - Special SDIC Plenary
- Running Pilots
  - SDIGER, RISE, MOTIVE, ORCHESTRA, RELIT, ..
- Future Projects
  - Stage 2 of the Earthwatch Gmes Services Element - Scaling Up Consolidated Gmes Service (Closing Date: 29/03/2005)
  - Thematic call in the area of 'Aeronautics and Space' [FP6-2005-Space-1] (Closing Date: 13/07/2005)

GSDI-8 21 Apr. 2005

EUROPEAN COMMISSION  
Joint Research Centre

## Conclusions

- INSPIRE is a framework Directive with implementing rules to be defined in incoming years
- Highest involvement of key stakeholders through the SDIC concept is needed
- Openness and transparency in drafting implementing measures will be followed
  - including formal public consultation
- Pilots and Projects could play a key role to define and validate the implementing rules

GSDI-8 21 Apr. 2005