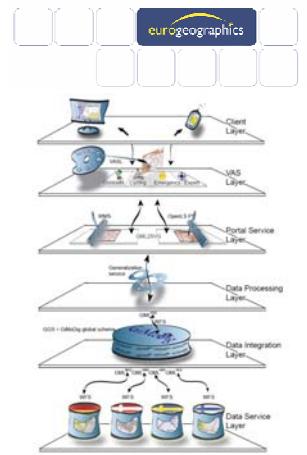




Sustainable development needs sustainable information, needs sustainable funding

### SDI Components

- Metadata
- Data specifications
- Network services
- Data policy
- People & organisations



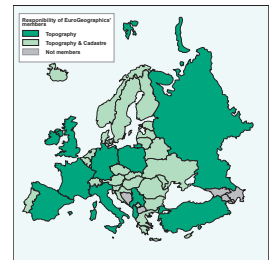
### Data policy variables

- Organisations involved & partnerships
    - 'suppliers' and 'users'
  - Products & services (what is being delivered and why?)
  - Legal context for both the organisation and the data policy
  - Technology
  - Political & policy context
  - Historical & cultural context
- ..... none of which are fixed .....

Page 3

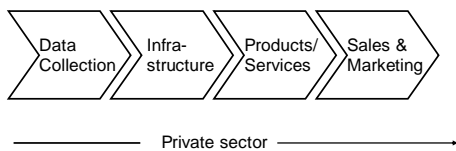
### The National Mapping & Cadastral Agencies

- Public organisations
  - Military
  - Government departments
  - 'Independent' agencies
- All responsible for topographic mapping
  - Cadastre
  - Land registration
  - Charting



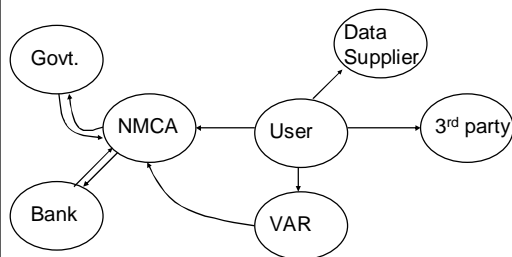
Page 4

### From data > user



Page 5

### Business model



Page 6

## Legal framework

- Competition law, copyright law, freedom of information
- Directive on access to environmental information
- Directive on re-use of public sector information (PSI)
- INSPIRE (2007?)



## Technology



## Trends

- NMCAs
  - Increasing 'cost recovery'
  - Greater control over the business
  - Stronger user focus – change in behaviours
- End Users
  - Stronger say in the quality of service
  - Better quality of service

## Trends

- Wide variety of pricing & licensing models
- Greater potential for 'conflict' with end users and private sector
- Maximising use or maximising 'cost recovery'?
- National policy inconsistent with European 'policy'?
- More and more (polarised) debate about data policy, but little 'constructive' discussion .....

## Where next?

- Fact-based analysis
  - National models
  - Impact
  - Role of NMCAs and their partners
- Retain the best of what we have now whilst addressing the problem areas
- Sustainable data policy models that support sustainable information for sustainable development