

**EILAT 2009**

FIG Working Week

Surveyors Key Role in Accelerated Development

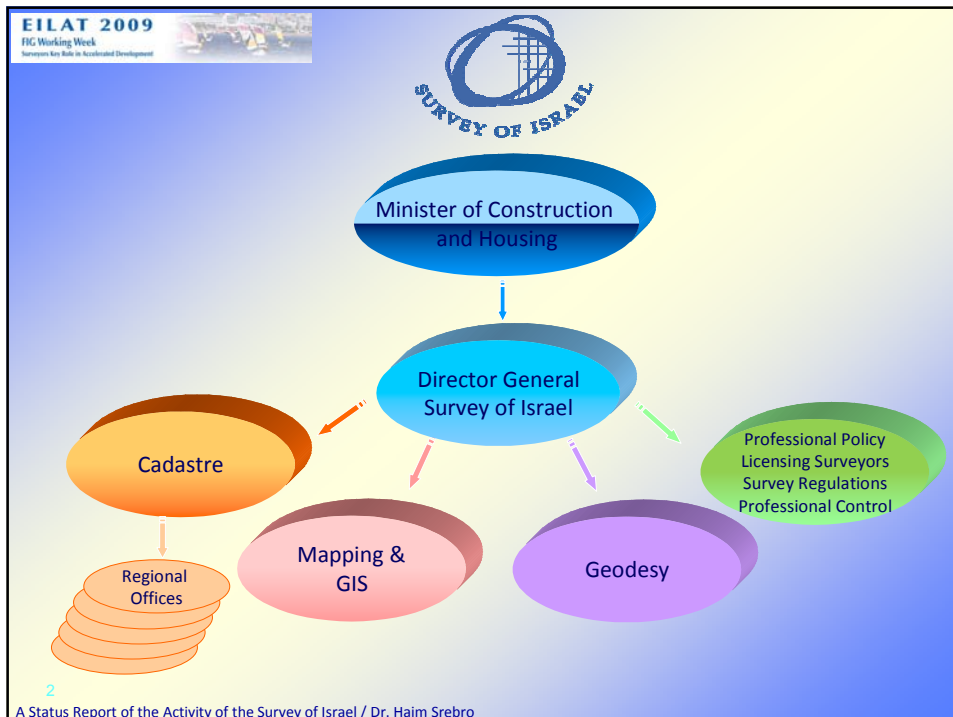


**3-8 May 2009**

# A Status Report of the Activity of the Survey of Israel

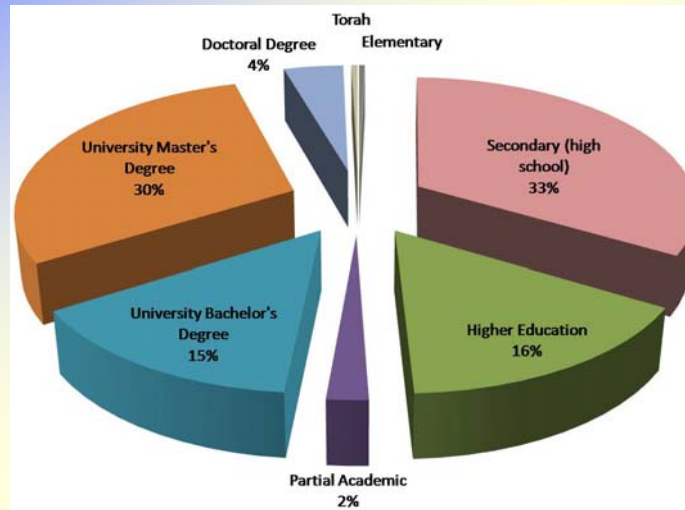
**Dr. Haim Srebro**  
Director General  
Survey of Israel

**6 May 2009**



## Human Resources

250 + 50 Employees



3

A Status Report of the Activity of the Survey of Israel / Dr. Haim Srebro

## General Responsibilities:

**Professional Policy, Licensing, Regulations, Control and Enforcement.**

**Advising the Government , Boundaries, Research and Development, International relations.**

**Supporting Laws, like the Law of Lands, the Survey Ordinance, the Law of Planning and Construction.**

**Supporting Government decisions.**

4

A Status Report of the Activity of the Survey of Israel / Dr. Haim Srebro

## Examples for the Definition of the Coast line in support of the Law for the Protection of the Coastal Environment



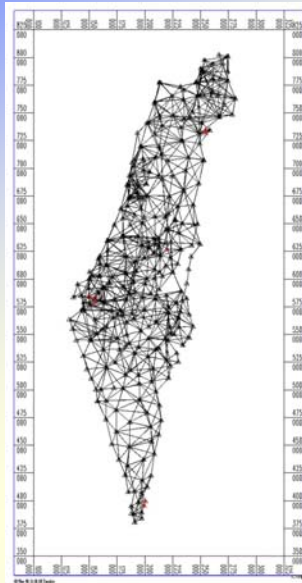
5

A Status Report of the Activity of the Survey of Israel / Dr. Haim Srebro

## Geodesy

Horizontal network

Vertical Network



6

A Status Report of the Activity of the Survey of Israel / Dr. Haim Srebro

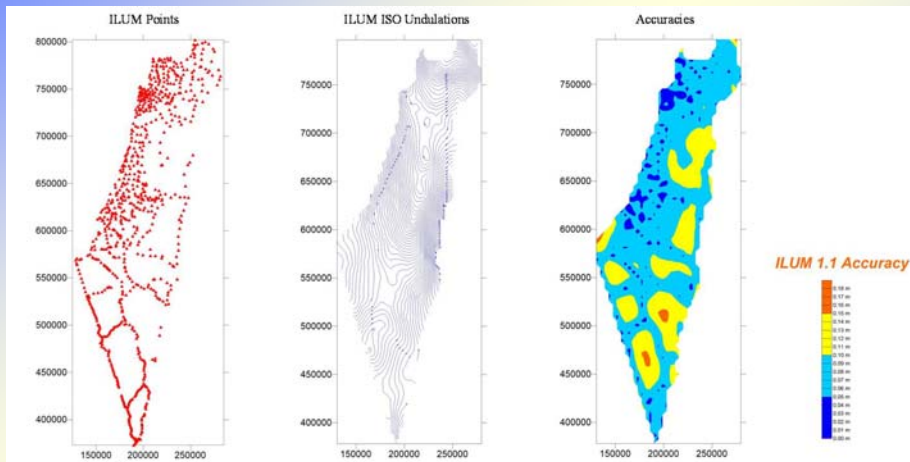
## Geodesy – G Network



7

A Status Report of the Activity of the Survey of Israel / Dr. Haim Srebro

## Vertical Network – The Undulation Model



8

A Status Report of the Activity of the Survey of Israel / Dr. Haim Srebro

## Cadastral

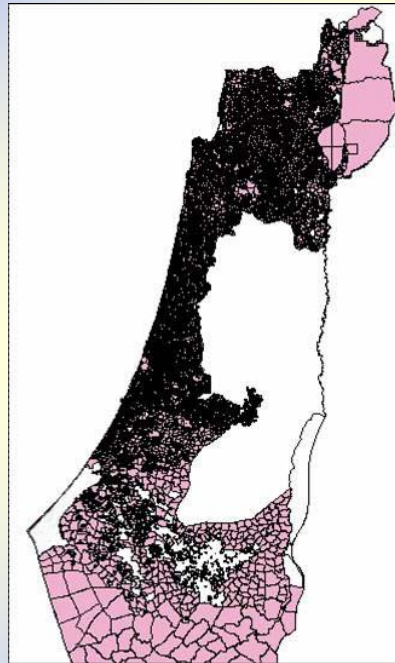
**Torrence Principles**

**95% of Land Settlement**

**16,000 Blocks**

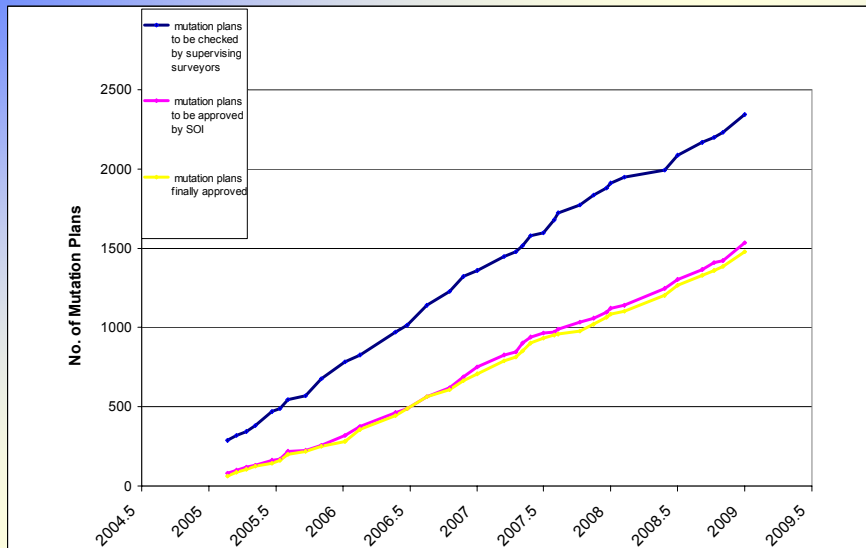
**800,000 parcels**

**1200-1400 Mutation Plans annually**



9

## The Production of the Supervising Surveyors



10

## 3D Cadastre

**הפתרון המוצע**  
(יצירת תת-חלקות מרחביות)

הגדרת תת-החלקות במרחב  
החלקה הקרקעית

היטל אנכי של השכבות  
על החלקה הקרקעית

**הפתרון המוצע**  
(חלוקת המרחב שמעל ומתחת לחלקה)

מרחב על-קרקעי

תת-החלקה הקרקעית

חלקה קרקעית

תת-החלקה הקרקעית

מרחב תת-קרקעי

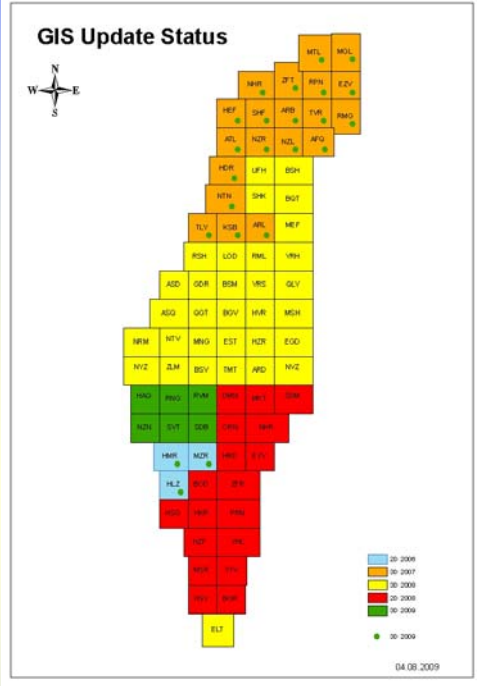
תפריס דו-ממדי

## Coordinate Based Cadastre (CBC)

- Every Cadastral Plan will be based on the APN.
- There will be uniformity between adjacent and remote plans.
- Land boundary will be defined and reconstructed by coordinates in an accuracy of few centimeters.

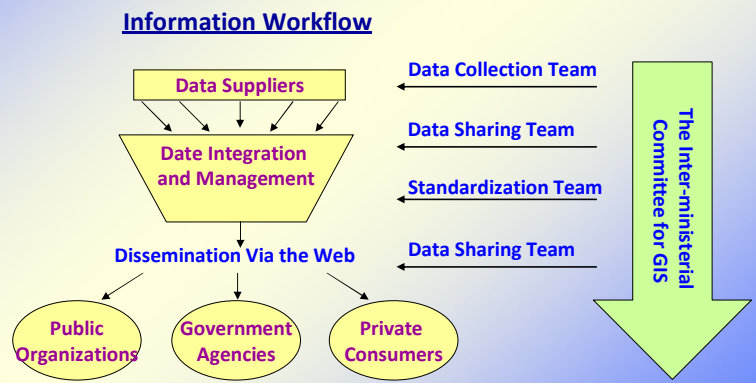


## The Status of the National GIS



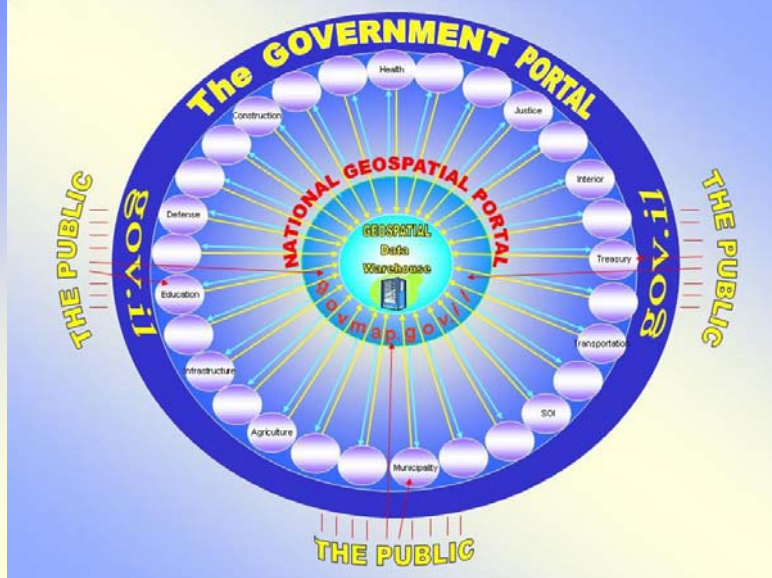
## The Geospatial Portal

**120 layers of data**  
**400 meta data files**  
**Cooperation with Inter-Ministerial Committee for GIS**



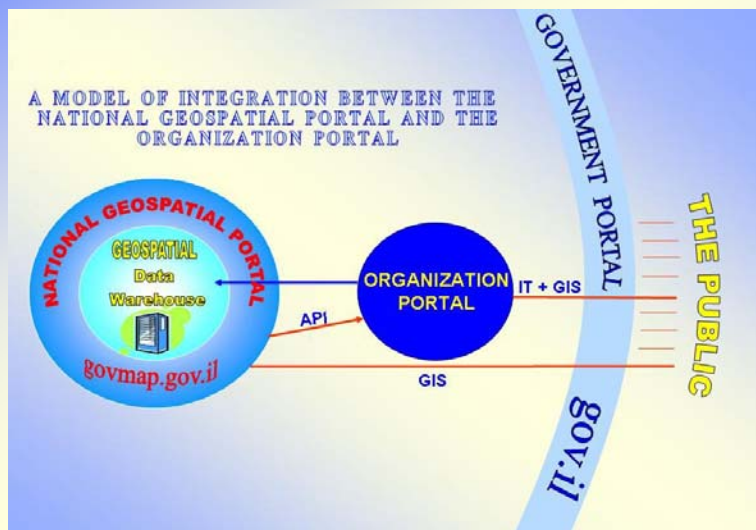


## The Online Geospatial Configuration



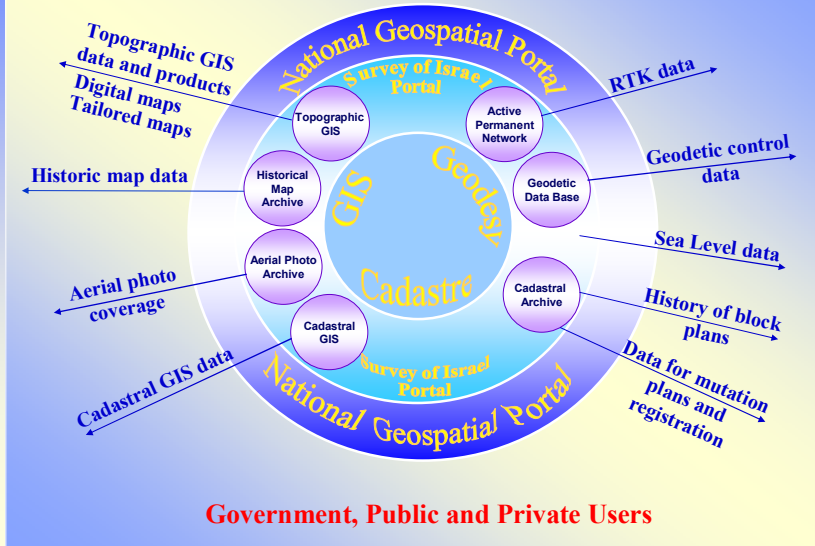
17

## A Model of Integration between the National Geospatial Portal and a Portal of a Government Organization

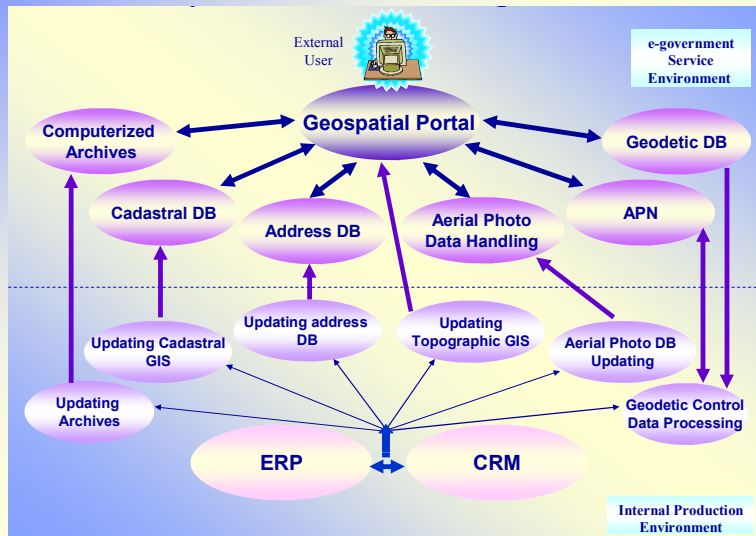


18

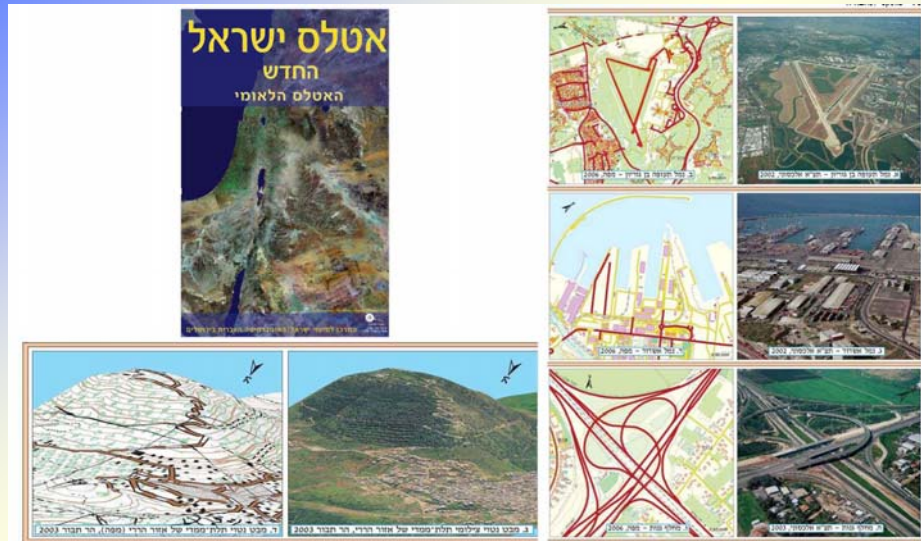
### Survey of Israel on-line data model 2009-2010



### The Relationship between the Internal Production Environment and the External Service Environment



## Examples of The New Atlas of Israel



21

A Status Report of the Activity of the Survey of Israel / Dr. Haim Srebro

## Concluding Remarks

- Continuous change.
- Focus on service.
- Turn services to online, making data and information accessible to the public.
- Focus on human resources and continuous learning of the staff.
- Encourage cooperation with government agencies, with the Academia, with the private market and with the international professional community.

22

A Status Report of the Activity of the Survey of Israel / Dr. Haim Srebro

Thank you  
for your attention