




INTERNATIONAL
FEDERATION OF
SURVEYORS

FIG Working Week 2012
Rome, Italy 6-10 May 2012



Agenzia del Territorio




Innovative Cadastre and
Land Rights Management

**The evolution of cadastral cartographic system
for the management of the territory in Italy**

Flavio C. Ferrante
Head of Cartographic Services Division
Agenzia del Territorio

Agenzia del Territorio – L.go Leopardi 5 – Roma



Definitions

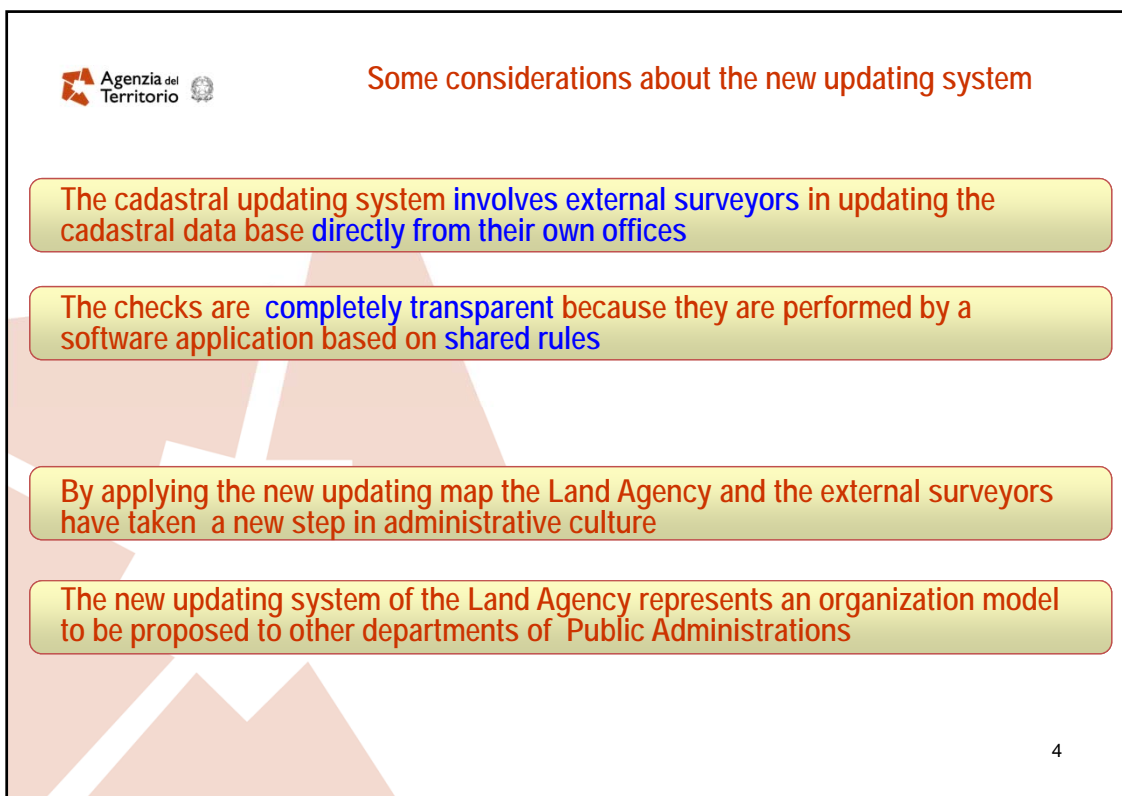
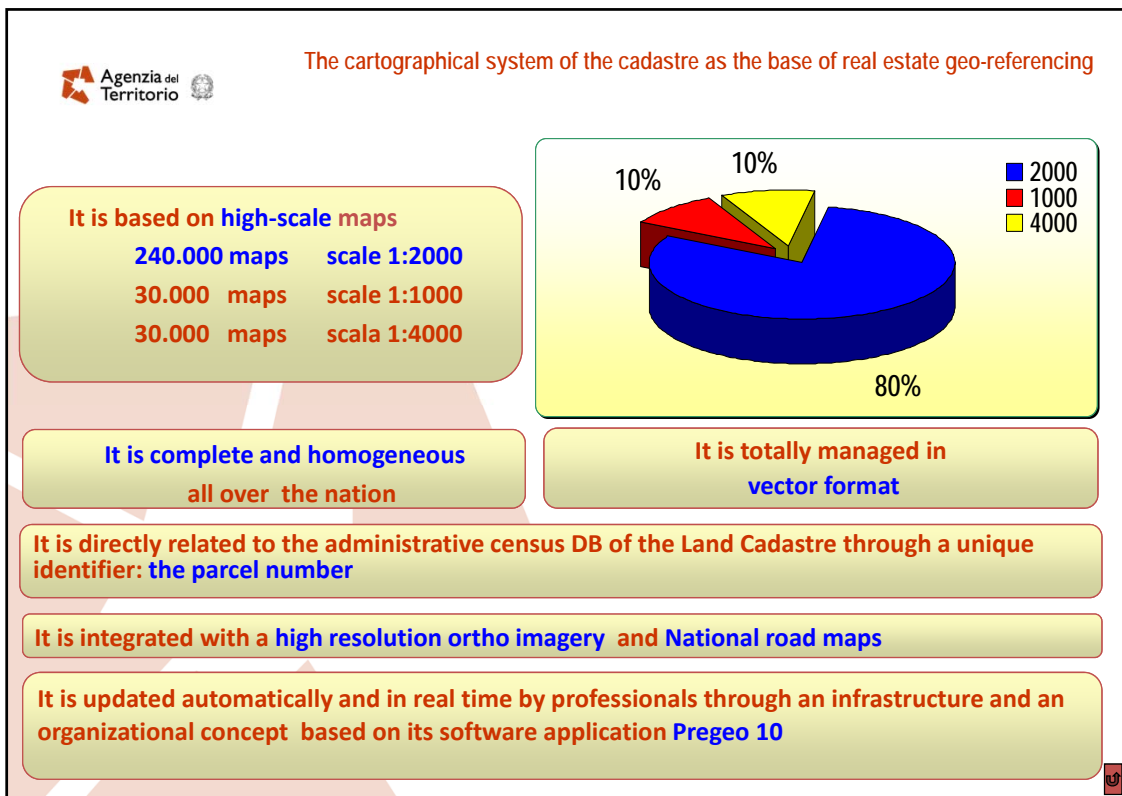
By the term “real estate geo-referencing” the Land Agency means the ability of its information system to detect buildings throughout the nation in an unequivocal and simple manner

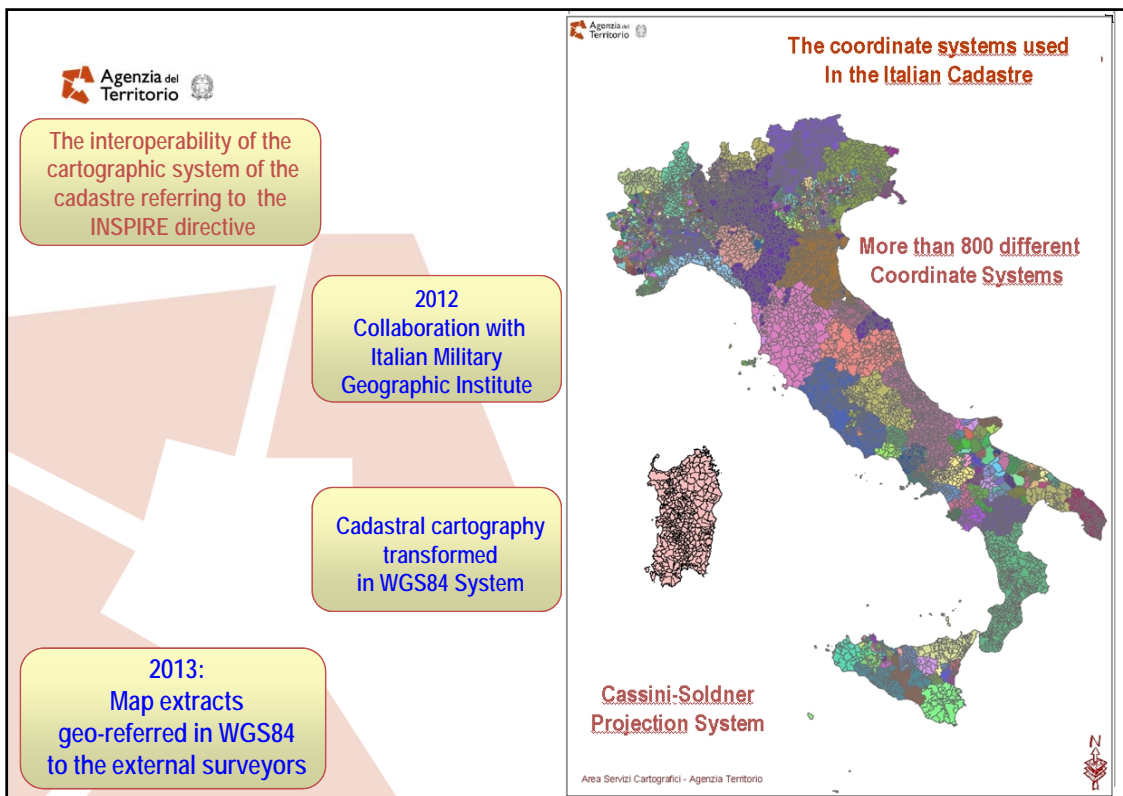
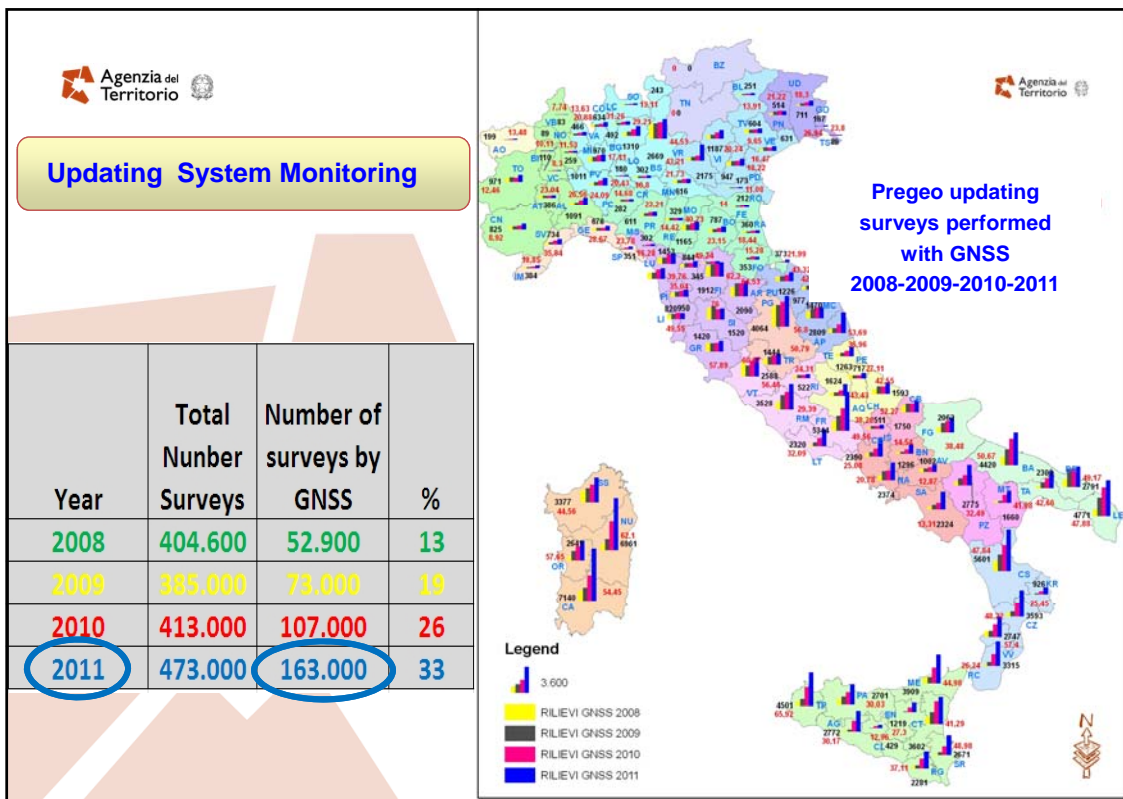
The Land Agency governs the information system of the Italian Real Estate patrimony, including detecting technical features, descriptions, taxation, values and rights

The geo-referencing of real estate assets is based on the cadastral cartographic system

As the National Cartographic Authority, the Cadastre is responsible for the management of the high scale cartographic system and its continuous updating

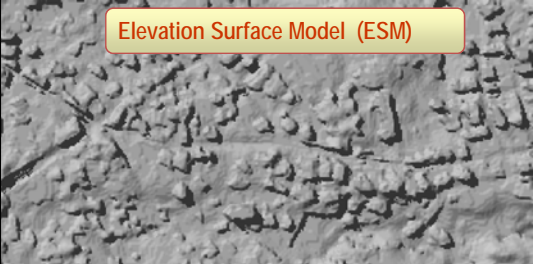
2



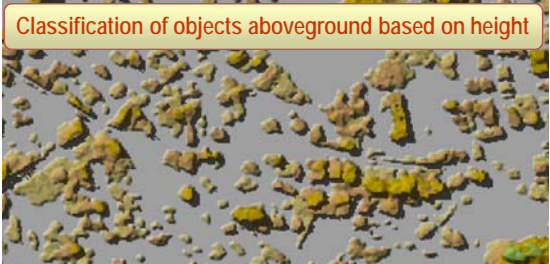


Agencia del Territorio

The cadastre for the fight against tax evasion

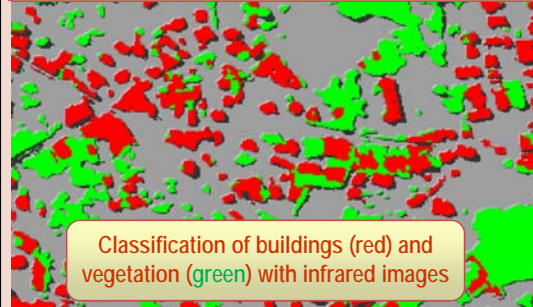


Elevation Surface Model (ESM)

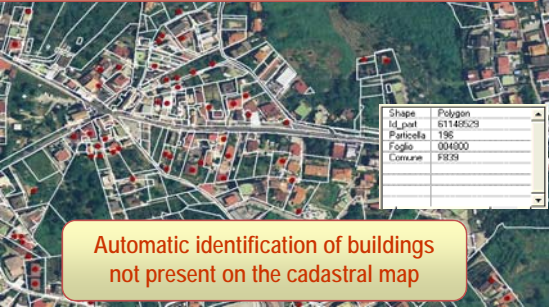


Classification of objects aboveground based on height

From 2007 to 2010
more than 1,000,000 buildings not declared to the Italian cadastre have been automatically Identified



Classification of buildings (red) and vegetation (green) with infrared images



Shape	Polygon
Id_part	01140509
Particella	196
Foglio	004300
Comune	FR89


Automatic identification of buildings not present on the cadastral map

Agencia del Territorio **Agea**

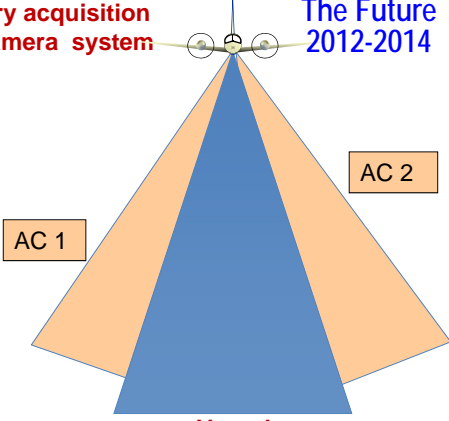
Aerial Imagery acquisition by oblique camera system

The Future 2012-2014


Aerial Imagery




AC 1 AC 2



Vexcel Camera





Number of floors = 8
Height of the Building = 29,8m

The Future

Agenzia del Territorio

Integration between Cadastre - Real Estate Rights Register

The screenshot displays the 'geopot' web application interface. On the left, a satellite map is overlaid with a white 'Map Extract' showing a specific plot. In the center, a 'Unit Plan' is shown, which is a detailed technical drawing of the plot. On the right, an 'Integrated certificate Cadastre- Rights Register' is displayed, containing text and a small map. The interface also includes a search bar, navigation controls, and a sidebar with various options like 'Quotazioni Valori Catastali' and 'Opzioni Visualizzazione'.

FIG INTERNATIONAL FEDERATION OF SURVEYORS

FIG Working Week 2012
Rome, Italy 6-10 May 2012

Agenzia del Territorio

Innovative Cadastre and
Land Rights Management

**The evolution of cadastral cartographic system
for the management of the territory in Italy**

Thanks for Your attention

Flavio C. Ferrante
Head of Cartographic Services Division
Agenzia del Territorio

Agenzia del Territorio – L.go Leopardi 5 – Roma