



A new approach: participatory land consolidation

Marije Louwsma

FIG XXV – Kuala Lumpur

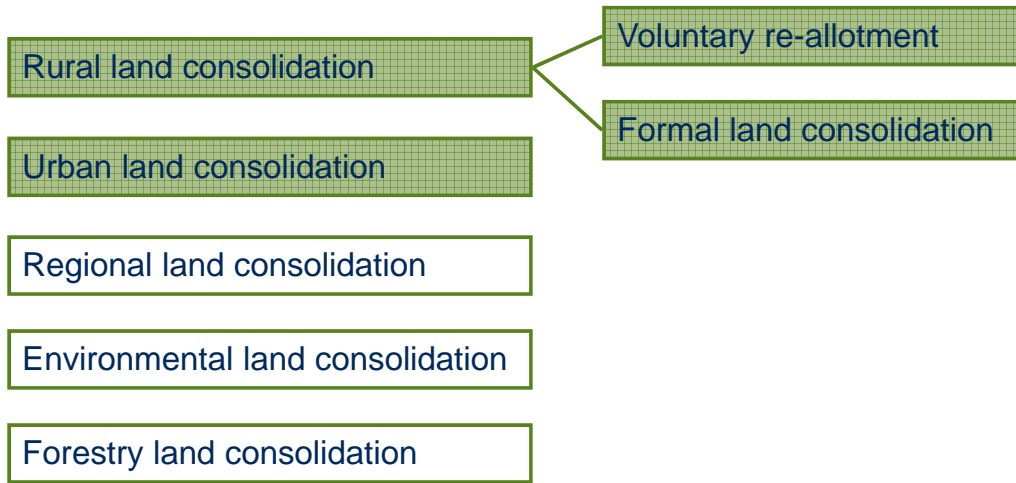
kadaster
feitelijk verrassend

Why a new approach?

Trends & developments:

- Shift in responsibility from government to citizens
- Governmental budget cuts
- New technical solutions:
 - Increased availability
 - Accepted by users
- Demand for public participation from:
 - Governments
 - Citizens (broadly defined)

Types of land consolidation

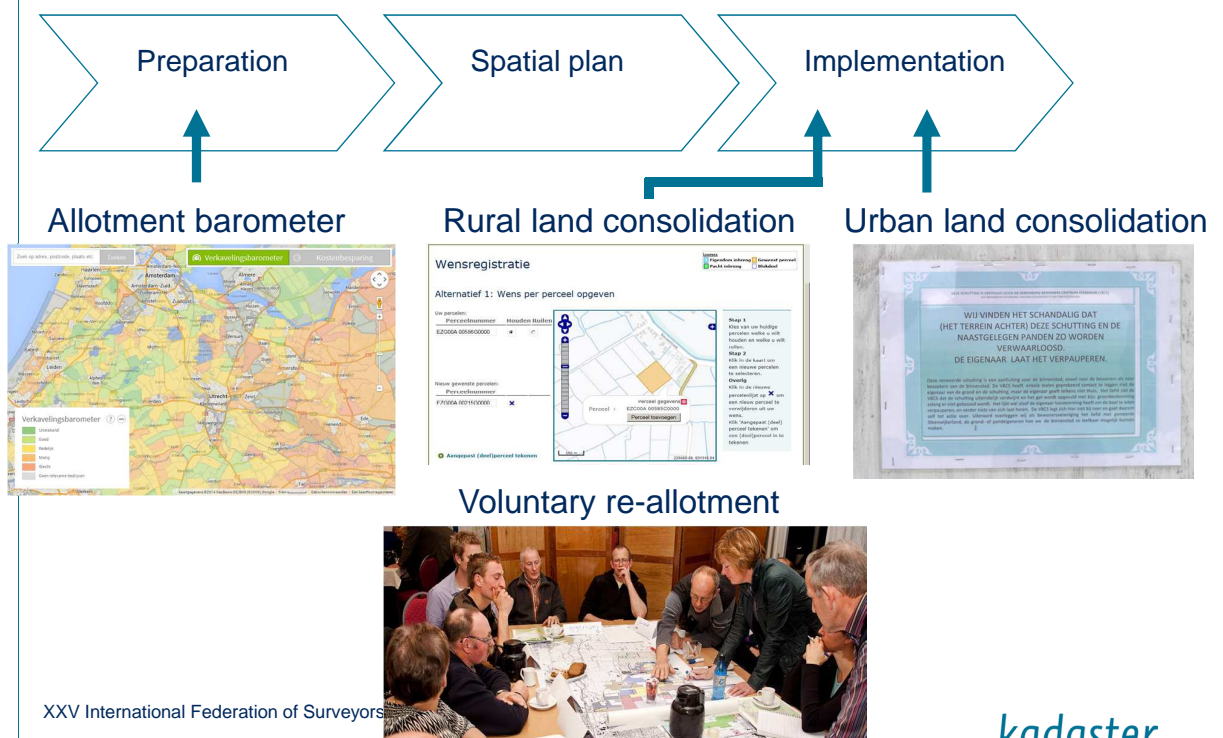


Based on Demetriou (2014) and Law on the development of rural areas (2007)

XXV International Federation of Surveyors Congress, Kuala Lumpur, Malaysia, 16 – 21 June 2014

kadaster

The new approach applied



XXV International Federation of Surveyors

kadaster

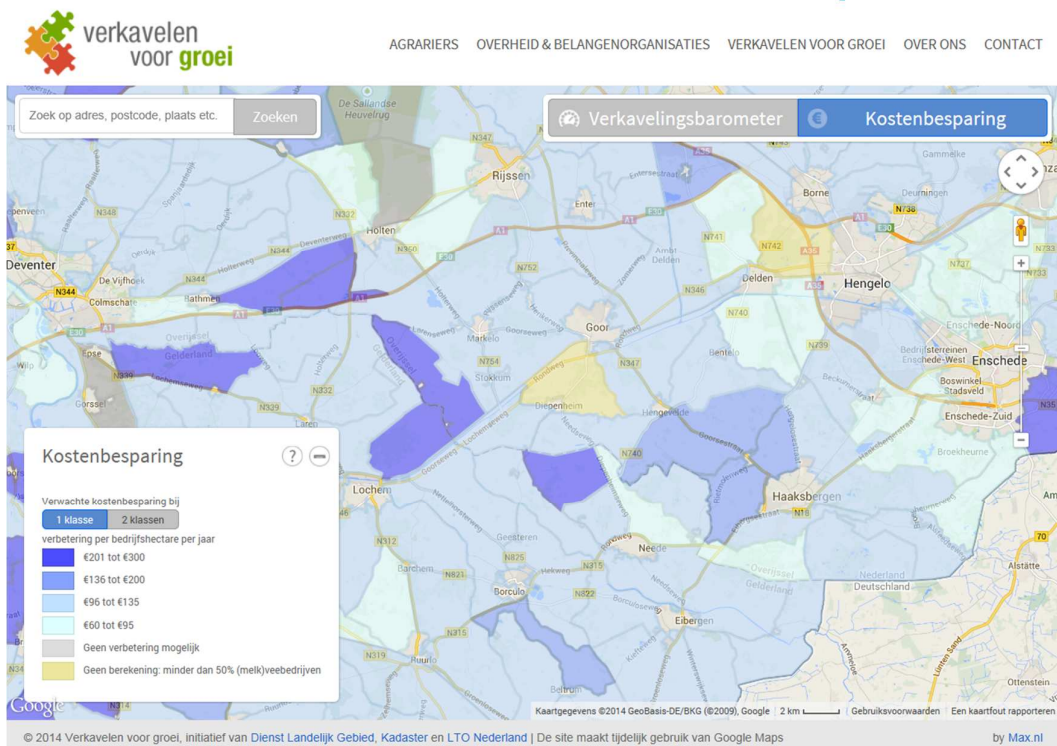
The allotment barometer

What	<p>Determines:</p> <ul style="list-style-type: none"> Quality of agricultural parcel structure per area Indication of financial benefits after improvement
How	<p>Spatial multicriteria analysis:</p> <ul style="list-style-type: none"> Average % of parcel with farm buildings Average % of parcels at a distance Average number of parcels at a distance Average size of parcels at a distance
Why	To commence bottom up initiatives
When	Launched in september 2013

XXV International Federation of Surveyors Congress, Kuala Lumpur, Malaysia, 16 – 21 June 2014

kadaster

The allotment barometer - example



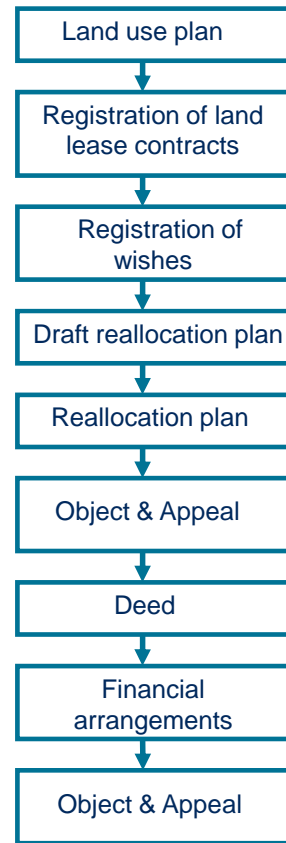
© 2014 Verkavelen voor groei, initiatief van Dienst Landelijk Gebied, Kadaster en LTO Nederland | De site maakt tijdelijk gebruik van Google Maps

kadaster

Rural land consolidation

- Formal process
- Participation:
 - Online (new)
 - Written
 - Oral
- Per phase an instruction video to support citizens with little Internet experience
- Advantages of online access:
 - Accessibility
 - Ease of use
 - Transparency
 - Increased functionality
 - Increased number of people actively involved

WEB - BASED PORTAL



XXV International Federation of Surveyors Congress, Kuala Lumpur, Malaysia, 16 – 21 June 2014

kadaster

Rural land consolidation

Analogue form

Opmerkingen betreffende eigendom en gebruik		
gebruik/pacht/verpacht	blokdeel	Gebruiker/pachter/percelen
Bedrijfstype		
Blokdeel Bedrijfgebouwen		
Gewenste toedeling		
Wens rangorde	Blokdeel/blokdelen	Tekst
1 ^o wens		
2 ^o wens		
3 ^o wens		

Web-based portal

Wensregistratie

Alternatief 1: Wens per perceel opgeven

Uw percelen:

Perceelnummer	Houden Ruilen
EZG00A 00588G0000	<input type="checkbox"/>

Nieuw gewenste percelen:

Perceelnummer	X
F7G00A 00215G0000	<input checked="" type="checkbox"/>

Aangepast (deel)perceel tekenen

Korte toelichting op uw keuze: karakters over: 255

Legenda

- Eigenaam inbreng
- Gewenst perceel
- Pacht inbreng
- Blokdeel

Stap 1
Kies van uw huidige percelen welke u wilt houden en welke u wilt ruilen.

Stap 2
Klik in de kaart om een nieuwe percelen te selecteren.

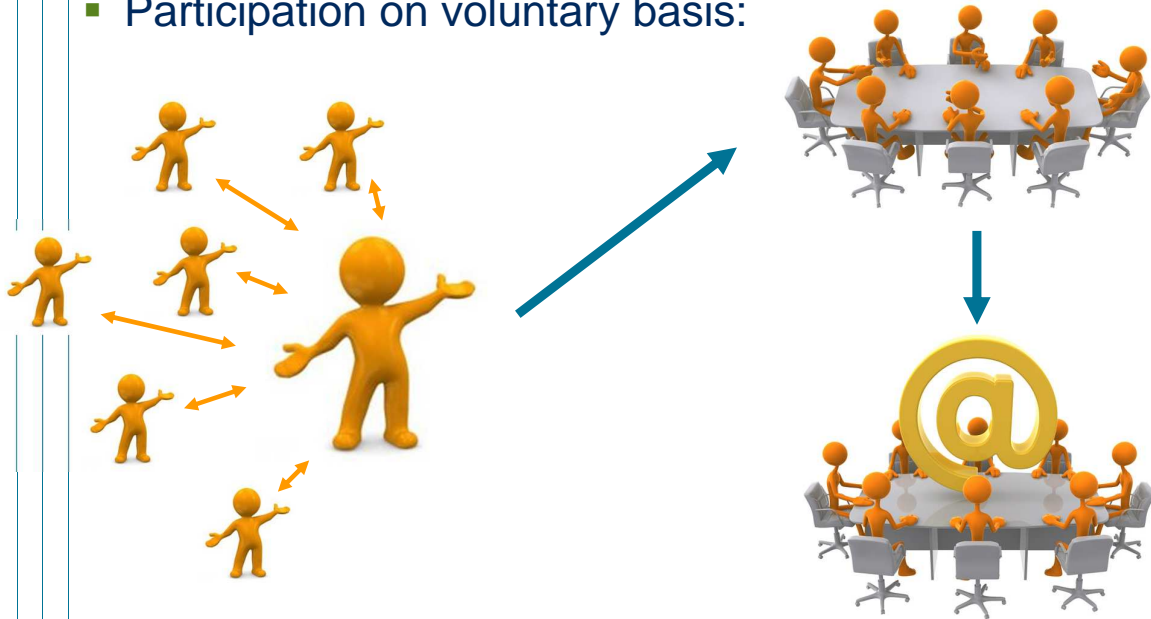
Overig
Klik in de nieuwe percelenlijst op **X** om een nieuw perceel te verwijderen uit uw wens.
Klik: 'aangepast (deel) perceel tekenen' om een (deel)perceel in te tekenen

XXV International Federation of Surveyors Congress, Kuala Lumpur, Malaysia, 16 – 21 June 2014

kadaster

Voluntary re-allotment

- Participation on voluntary basis:

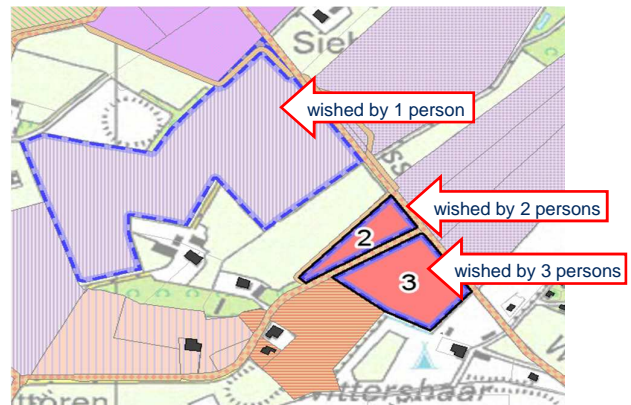
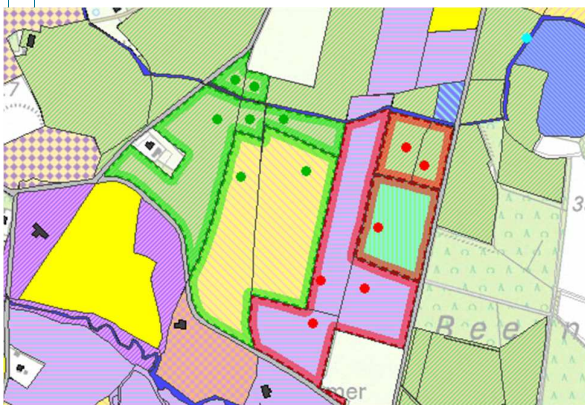


XXV International Federation of Surveyors Congress, Kuala Lumpur, Malaysia, 16 – 21 June 2014

kadaster

Voluntary re-allotment

- Red: not exchangeable
- Green: exchangeable



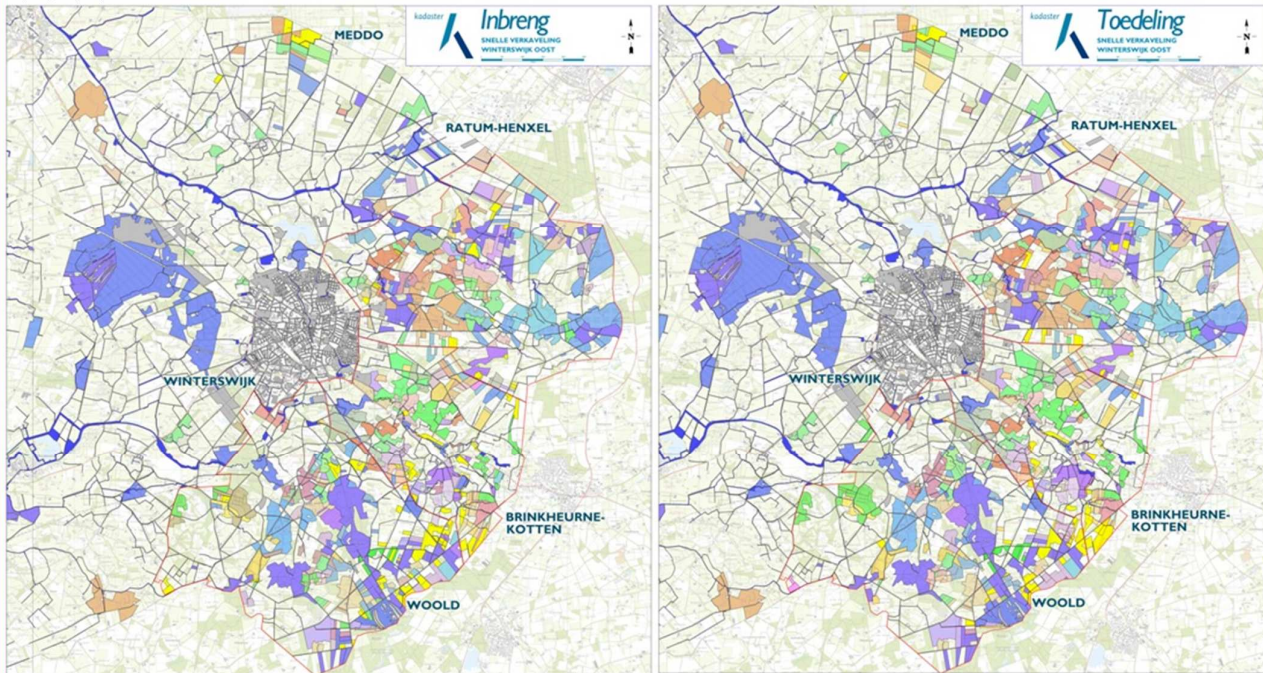
XXV International Federation of Surveyors Congress, Kuala Lumpur, Malaysia, 16 – 21 June 2014

kadaster

Voluntary re-allotment



- Example Winterswijk Oost:



Voluntary re-allotment



- Web-based portal used for preparation:
 - Registration of land lease
 - Registration of wishes regarding new allocation
- Design of reallocation plan with parties together
- Thus, combination of Internet and face to face contact

Urban land consolidation

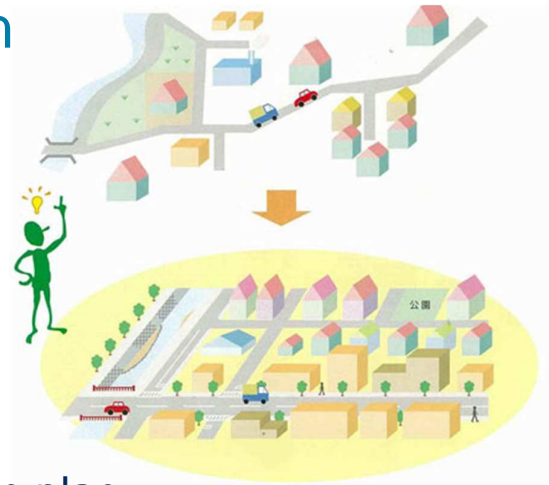
- Rationale:

“Land readjustment means putting those who want to develop in position”

- Participation:

- Parties develop reallocation plan based on negotiations
- Government approves plan

- Law on urban land consolidation not yet available

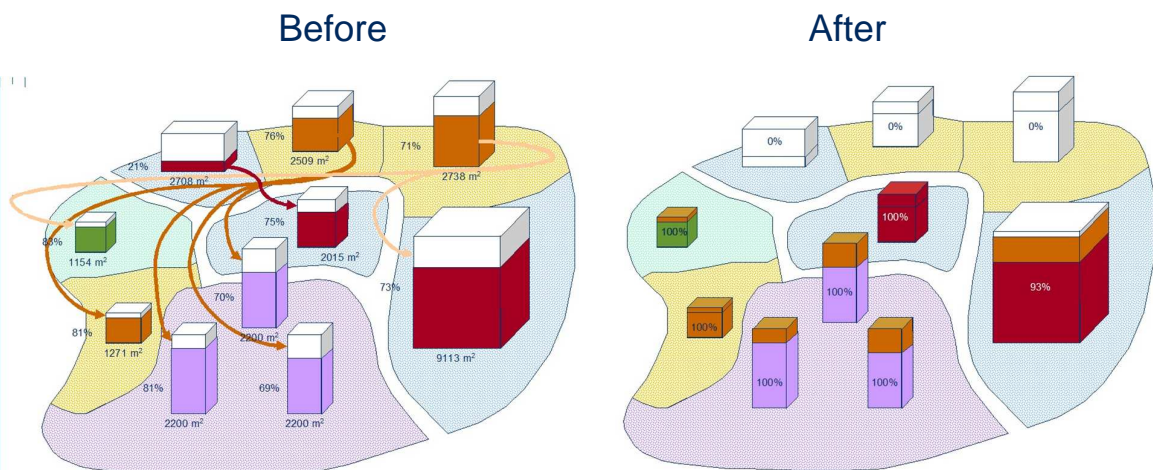


XXV International Federation of Surveyors Congress, Kuala Lumpur, Malaysia, 16 – 21 June 2014

kadaster

Example urban land consolidation (1)

- Restructuring of office buildings
- Exchanging tenants and office floor space



XXV International Federation of Surveyors Congress, Kuala Lumpur, Malaysia, 16 – 21 June 2014

kadaster

Example urban land consolidation (2)



XXV International Federation of Surveyors Congress, Kuala Lumpur, Malaysia, 16 – 21 June 2014

kadaster

Example urban land consolidation (3)

- Chalet park Burgh Haamstede

Before



After



XXV International Federation of Surveyors Congress, Kuala Lumpur, Malaysia, 16 – 21 June 2014

kadaster

Conclusions

- New participation modes empower citizens
- Citizens have possibility to cocreate reallocation plan
- Mix and match of participation modes between different forms of land consolidation

