

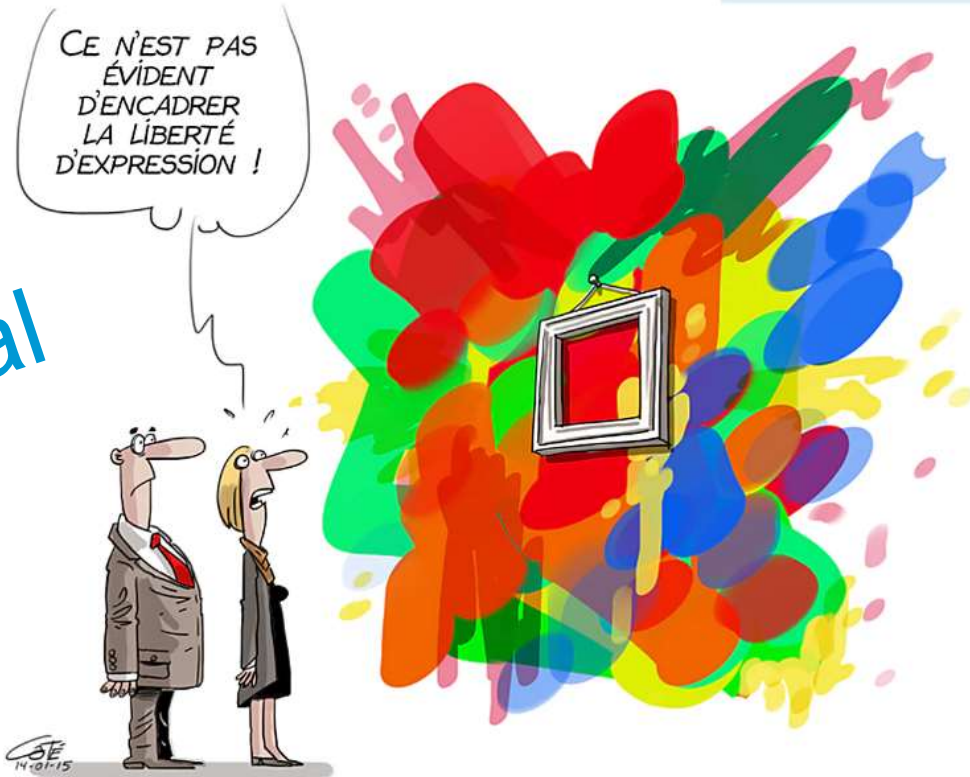


Standards Network Meeting

Tuesday, 8 May 14:00–15:30
in EMIRGAN HALL 1
Istanbul 2018

Freedom of expression is necessary even essential BUT...

CARTOONIST: CÔTÉ



©CÔTÉ - CARTOONING FOR PEACE



CARTOONS FOR FREEDOM OF EXPRESSION

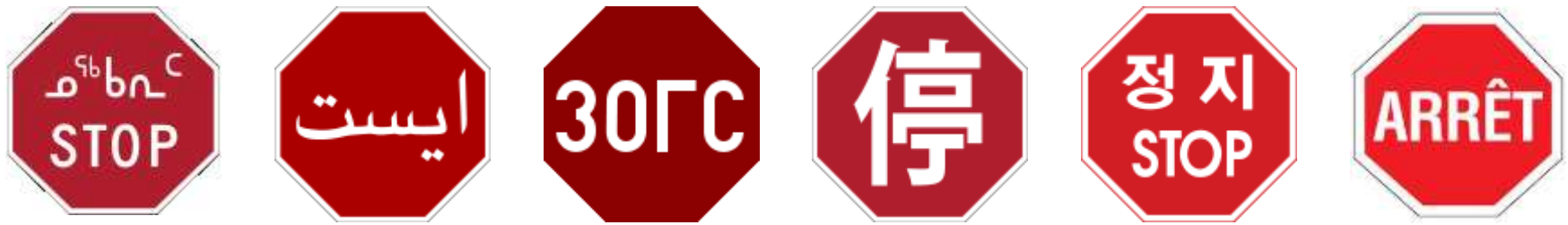
UNESCO AND CARTOONING FOR PEACE JOIN FORCES FOR WORLD PRESS FREEDOM DAY 2017

If everyone does whatever they want...



... the result can be gridlock!

WHY STANDARDS? ARE STANDARDS IMPORTANT?



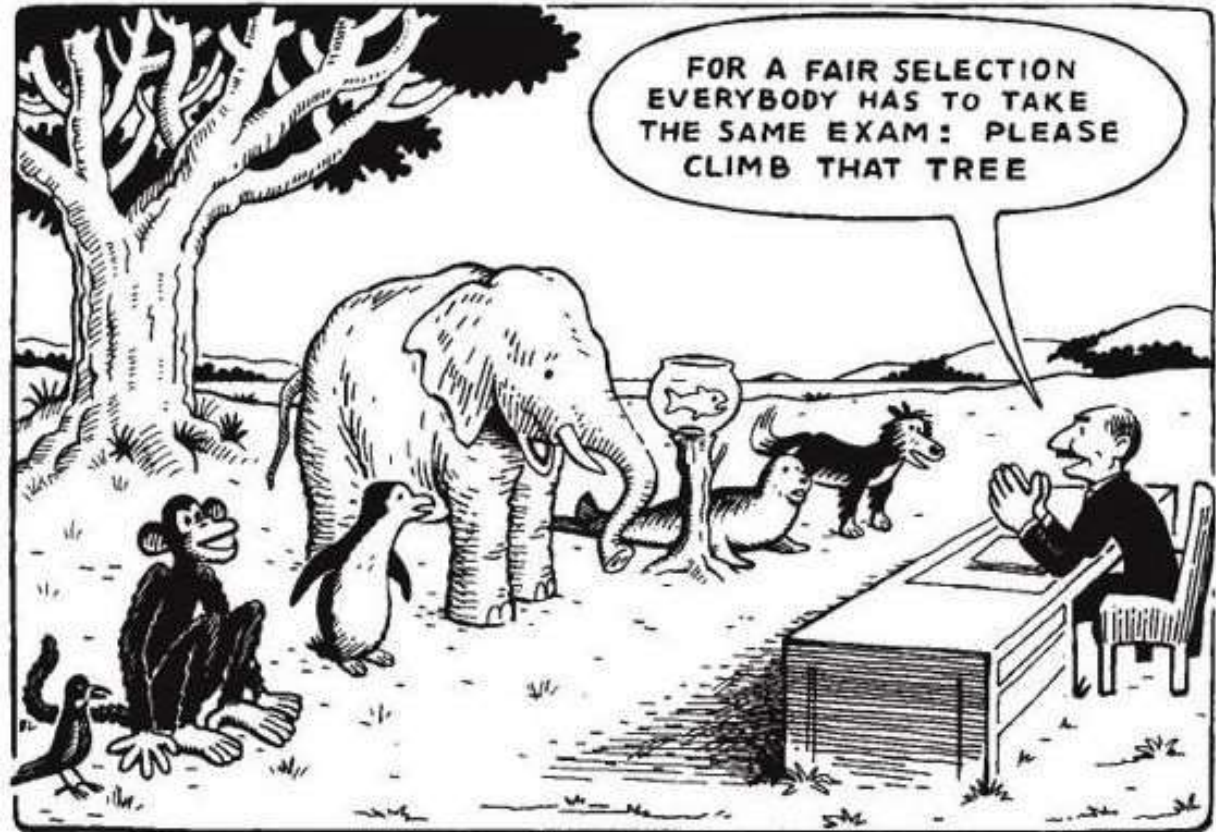
In essence, a standard is an agreed way of doing something.

Standards are the distilled wisdom of experts in their subject matter.

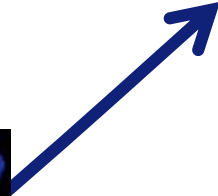
Standards are knowledge that help drive innovation and increase productivity. They can make organizations more successful and people's lives easier, safer and healthier.

WHY STANDARDS? ARE STANDARDS IMPORTANT?

Standards provide a consensus clear and unbiased way of doing things...



PROMOTE STANDARDS



- Liaison with standards bodies and NGOs**
- Identifying lead contacts to Technical Committees**
- Proposing priorities on FIG's standardisation activities**
- Advising and providing information on standards to FIG members**



In principle, the Standards Network has members from all of the FIG Commissions → some commissions are more active than others. Key items presently linked to the Standards Network are:

- ISO/TC 172 SC6 Work on Survey Instrument Standards
- ISO/TC 211 Geographic Information/Geomatics
 - ISO 19152:2012 Land Administration Domain Model and LADM II
- Non-ISO type Standards initiated by and/or which FIG is deeply involved:
 - International Property Measurement Standards Coalition
 - International Land Measurement Standards Coalition
 - International Construction Measurement Standards

FIG INVOLVEMENT IN IPMSC, ILMS AND ICMS

- International Property Measurement Standards Coalition
- International Land Measurement Standards Coalition
- International Construction Measurement Standards

These three standards have come from a real need to address issues in the measurement of property, land and construction...



The way property (homes, offices or shopping centres) are measured around the world varies dramatically. Which makes it difficult for property users, investors, occupiers and developers to compare space. The **IPMSC** is working to develop and embed a single property measurement standard.

Around the world, levels of security in land ownership vary enormously. In some countries up to 70% of land is unregistered. This means that legitimate owners 'rights' are not recognised in a formal system of land administration. The **ILMS** is working to bring about consistency in land and property transaction reporting standards worldwide.

The way construction projects are reported and costed varies significantly between markets making it difficult to compare projects around the world, increasing investment risk and impeding transparency. The **ICMS** is working to develop and implement international standards for benchmarking, measuring and reporting construction project cost.

ISO 12858 Series Ancillary devices for geodetic instruments

- ISO 12858-1:2014 Part 1: Invar levelling staffs
- ISO 12858-2:1999/Amd 1:2013 Part 2: Tripods
- ISO 12858-3:2005 Part 3: Tribrachs

ISO 16331 Series Laboratory procedures for testing surveying and construction instruments

- ISO 16331-1:2017 Part 1: Performance of handheld laser distance meters
- ISO/AWI 16331-2 Part 2: Terrestrial laser scanner *[Under development]*

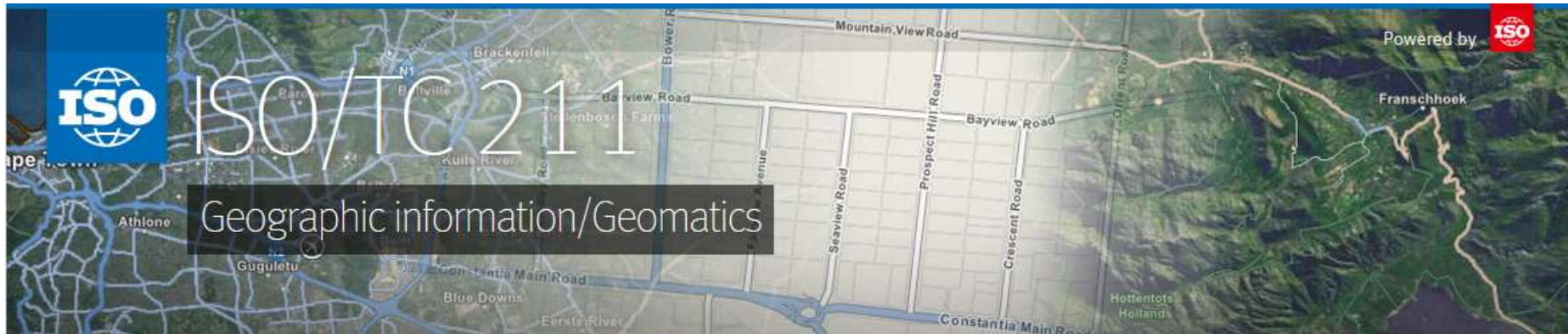
ISO 17123 Field procedures for testing geodetic and surveying instruments

- ISO 17123-1:2014 Part 1: Theory
- ISO 17123-2:2001 Part 2: Levels
- ISO 17123-3:2001 Part 3: Theodolites
- ISO 17123-4:2012 Part 4: Electro-optical distance meters (EDM measurements to reflectors)
- ISO 17123-5:2018 Part 5: Total stations
- ISO 17123-6:2012 Part 6: Rotating lasers
- ISO 17123-7:2005 Part 7: Optical plumbing instruments
- ISO 17123-8:2015 Part 8: GNSS field measurement systems in real-time kinematic (RTK)
- ISO/CD 17123-9 Part 9: Terrestrial laser scanners *[Under development]*

ISO 9849 Series Geodetic and surveying instruments

- ISO 9849:2017 Vocabulary





- This work aims to establish a structured set of standards for information concerning objects or phenomena that are directly or indirectly associated with a location relative to the Earth.
- These standards may specify, for geographic information, methods, tools and services for data management (including definition and description), acquiring, processing, analyzing, accessing, presenting and transferring such data in digital/electronic form between different users, systems and locations.

78

published ISO standards*
under the direct responsibility
of ISO/TC 211

29

ISO standards under
development*
under the direct responsibility
of ISO/TC 211

37

Participating members

31

Observing members

The LADM standard grew out of the Commission 7 work on the Core Cadastral Domain Model. It was accepted into the ISO/TC 211 work programme in 2008. Today is being used by an increasing number of countries.

During the recent *7th Land Administration Domain Model Workshop* held in Zagreb, Croatia, it was agreed that it is time to start development on a second edition

– LADM II. This second edition should include:

- Functionality for valuation,
- A comprehensive support for 3D and 4D Cadastre.
- Support for technical model/encodings (BIM/IFC, INTERLIS, RDF, InfraGML, CityGML).
- Implementation of blockchain support for transactions.
- Inclusion of processes using imagery and app based solutions.
- Piloting of LADM implementations in real world environment.

LADM II will be organised by the Domain Working Group Land Administration of the **Open Geospatial Consortium**.

FIG has recently submitted a New Work Item Proposal (NWIP) to Secretariat of the ISO/TC211 to develop the second edition (LADM II) in close cooperation with global stakeholders and member organisations.

ISO TS 19127:2005 defines rules for the population and maintenance of registers of geodetic codes and parameters and identifies the data elements, in compliance with ISO 19135 and ISO 19111, required within these registers. Recommendations for the use of the registers, the legal aspects, the applicability to historic data, the completeness of the registers, and a mechanism for maintenance are specified by the registers themselves.

The registry development is complete (i.e. published), so current work is focused on getting the software deployed with long-term technical support.

This standard describes coordinate systems, coordinate reference systems and datums and the relationships among them. It also describes coordinates and the operations that may be carried out on them.

A review of this standard is underway in conjunction with the Open Geospatial Consortium (OGC). Amongst other things, this review aims to update 19111 to better handle modern datums such as kinematic datums and those using the geoid as a reference surface.

Standards Network

Government Business
Society Products

SAFE Reliable AIR
Business Society Government

HEALTH Trade
BUSINESS GOVERNMENT

SOC / ETY S
LAW S

CO2 SAVINGS Customer SATISFACTION
QUALITY
WATER ENVIRONMENT
SOFTWARE AGREEMENTS
SURVEY

Thank you
for your
attention...