



■ **EI Hassane SEMLALI**
 Institut Agronomique et Vétérinaire Hassan II
 Filière de Formation en Topographie

Email: e.semlali@iavi.ac.ma
Sèdèhou J. AZON

IGT surveying
Elarbi ELARCHI, civil engineer
 Division des Travaux de Contournement de Casablanca

2nd FIG Regional Conference

Design and Implementation of GIS prototype for the fulfillment of a highway's works
Conception et développement d'un prototype SIG pour la gestion du suivi d'exécution des travaux d'une autoroute



OUTLINE

- Introduction
- Problematic and Objectives
- Adopted Methodology
- Database design
- Components of the GIS prototype
- Application
- Conclusion

2nd FIG Regional Conference

INTRODUCTION

- Urban and rural context
 - Roads play a strategic role in the socio economic development of a country,
 - very useful in transporting travelers and merchandises as well
- Advantages
 - Ensures the economic exchanges between regions
 - Ensures the economic exchanges between urban and rural centers
 - reduces the transportation costs
 - facilitates accessibility in the urban and rural centers.

2nd FIG Regional Conference

INTRODUCTION

- The study of any project of a highway passes through 3 Phases:
 - The study of definition
 - The study of preliminary draft
 - The study of the execution project
- After its construction and its putting into operation an attention have to be allocated to the highway's production run
 - feasibility of the highway
 - Caused expenditure...

2nd FIG Regional Conference

Problematic and Objectives

- Moroccan highway inheritance counts thousands of structures (bridges, aqueducts,...etc.).
- These structures change in the course of time and in space.
- information concerning the daily follow-up of the structures carried out are :
 - graphic and alphanumeric documents for its follow-ups
- Data problems:
 - Difficult collection: multiple sources: divergence of data, Topicality and precision
 - are managed in a heterogeneous way with the tools that do no longer respond to user's needs

2nd FIG Regional Conference

Problematic and Objectives

Consequently

- the decision-making concerning an operation of positioning raises enormous difficulties of management and very long time of research.
- adding problems of data collection after construction of a highway.

Therefore, the development of a GIS then becomes a necessity.

- Within this framework, and with the assistance of the Division of the By-pass Highway of Casablanca that we propose to

▪ **Design and implement a GIS prototype for the fulfillment of a highway's works**

and

- **prepare a management system of the highway's inheritance**

2nd FIG Regional Conference

METHODOLOGY

- Classification and design of a data base for a highway's works.
- Exploitation of this data base by the Geodatabase object model of ARC/INFO 8.1, in order to develop a GIS solution for a highway's works accomplishment
- Implementing a GIS prototype for the follow-up of a highway's works

2nd FIG Regional Conference

GIS

For the decision makers:

- spatial data distributed and well structured in order to be able to extract some syntheses useful for the decision.

For the users:

- Data base management system for collection, storage, extraction, data query, analysis, presentation and drawing.

2nd FIG Regional Conference

GIS Applications



2nd FIG Regional Conference

GIS Applications in highway works

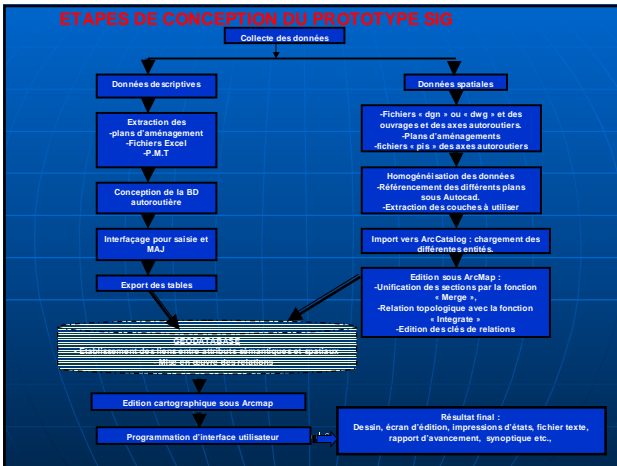
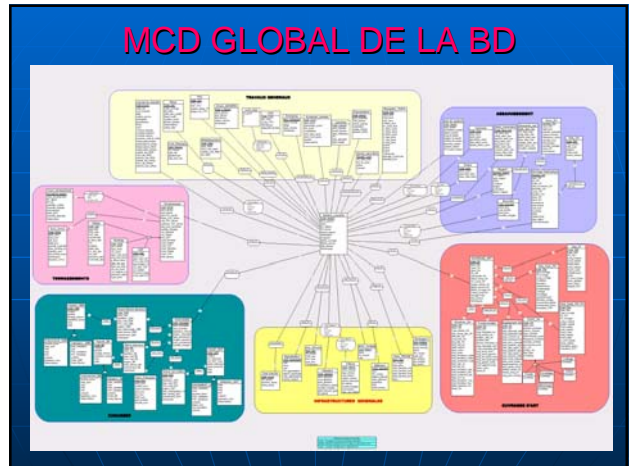
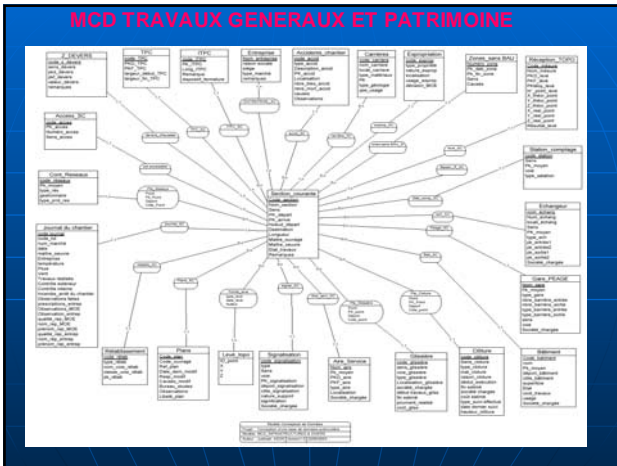
- Determination of highway corridors.
- Management of the highway inheritance.
- Management of works and structures
- Achievements of simulations
- Impact studies...

2nd FIG Regional Conference

Objectives of the projected GIS

- set up a single reference frame concerning the geographical information of a highway
- provide a geographical support common to each entity of a highway
- provide visual aids on the highway's inheritance
- provide an access to the data of the common GIS

2nd FIG Regional Conference



COMPONENTS OF HIGHWAY GIS PROTOTYPE

For an effective exploitation of GIS prototype, we propose it's use via several components:

- A **basic menu** composed of several modules which allow:
 - the management and the follow-up of execution of the highway's works,
 - consultation, edition and the updating of the GIS data
 - various analyses and treatments such as the superposition of the tables of events, the automatic placement of structures
 - generation of graphs and reports of events

2nd FIG Regional Conference

COMPONENTS OF HIGHWAY GIS PROTOTYPE

- A **"highway Editor"**, it is a graphic interface of edition and configuration of a highway project
- An interface **"digitalization of events"**
- An interface **"standard Tools of the GIS"** which constitutes a personalized toolbox

2nd FIG Regional Conference

Module PROJECT

- Configured section
- configure a new section
- Interventions works
- Expropriations
- Journal of site (fig)
- save project

2nd FIG Regional Conference

Fenêtre de journal de chantier

JOURNAL DE CHANTIER

Maitre_Devise: ADM_DTCC Marché n°: 1163/0175
 Entreprise: Grands Travaux Routiers Date: 15/04/2002
 code_section: RS114_Bousskoura code_Journal: J4

JOURNAL DE CHANTIER LOT B

Conditions atmosphériques: Incendie, Auit, chantier
 Température: Inconnu Pluie: Inconnu Vent: Inconnu Pluie à signaler: Inconnu

Travaux réalisés: Réglage le compactage de l'assise au niveau du remblai R13 entre les 5% 0+400 et 0+700 (Niveaux 12% et compacteur V4) réglage et compactage au niveau de R13 entre les 5%.

Contrôle effectué: Contrôle_matériel: Suivi du compactage Contrôle_interne: Inconnu

Observations faites et prescriptions réalisées: Aucune Maître d'ouvrage: Aucune
 Entreprise: Aucune

Représentant du MDE: Représentant Entreprise:
 Qualité: ITSA Qualité: Ingénieur Travaux
 Nom: Nom: DAUDET CHEIKHOU
 Prénoms: Prénoms: Sébastien

Buttons: Ajouter, Mettre à jour, Supprimer, Actualiser, Fermer, Imprimer le journal

2nd FIG Regional Conference

Module ROAD

Allows the management and the follow-up of work of the roadway such as:

- **General information:** type of roadway of each section and its features; or configure a new roadway
- **Follow-up of execution:** follow-up of the quantities of the layers of the roadway (GNT, GBB), and the follow-up of works of roadway (topographic, quantities... etc).
- **Progress report:**
 - validation of the layers of roadway (GNT, GBB, BB).
 - consult the existing reports or add other validations, in this last case the addition is dynamically reflected on the graphic

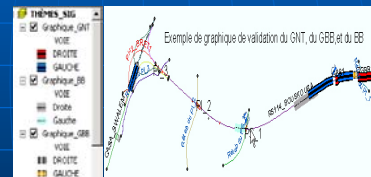
2nd FIG Regional Conference

Module ROAD

- **Graphic advance:**
 - establish the synoptic of advance concerning the three layers (GNT, GBB, BB) of roadway. A dynamic theme is created and added to the view (fig)
- **positioning specific constraints and networks:** natural and artificial obstacles (line telephone, electrical, railways)

2nd FIG Regional Conference

Exemple de synoptique graphique : GNT, GBB, BB



2nd FIG Regional Conference

Module EARTHWORK

- Informs about the inherent operations with the management of the highway earthworks.
- consult all information on volumes and costs of clearing and embankment material (fig)
- clearing and embankment design features: PK Departure, PK arrival, date and state of works, direction, code; volume

2nd FIG Regional Conference

Suivi et consultation des remblais

REMBLAI

CODE_REMBLAI: REMB_R1
 CODE_TERRAS: TER_PHASE2
 CODE_SECTION: RS114_BOUSKOURA
 SENS_TERRAS: 1

Matériaux du remblai
 ORIGINE: TYPE:

PKD_REMB: 27627 VOLUME: 165140 m3
 PKF_REMB: 26560 DIST_CARRIERES:

Coût
 COUT_UNITAIRE: dh COUT_TOTAL: 0 dh
 ETAT DES TRAVAUX: ACHEVES

Suivi de l'avancement du remblai

Date_Etat	SENS_TERRAS	Code_REMB
04/06/2003	1	REMB_R1

Buttons: Ajouter, Edition, Supprimer, Actualiser, Fermer

2nd FIG Regional Conference

Module EARTHWORK

Progress report: (fig)

- gives the progress reports of the embankments, clearing, as scouring (decapage), the purging and substitution, the contiguous embankments.
- consult, collect and update the data on the earthworks.

Graph of advance: (fig)

- can be modeled and posted automatically in the form of charts.

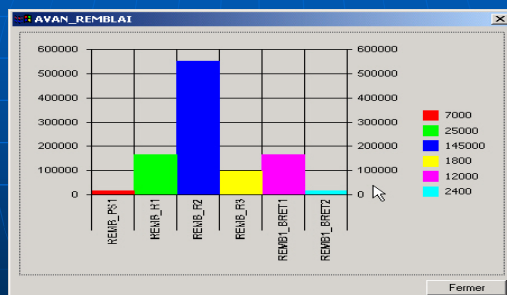
2nd FIG Regional Conference

Etat d'avancement des terrassements

Code section	CODE	Date ETAT	TYPE TERRAS	PK DEBUT	PK FIN	QUANTITE INITIALE	QUANTITE REALIS
RS114_BOUSKOUF		12/05/2002	S	Base de remblai et Sol	28200	3300	4496
RS114_BOUSKOUF		25/01/2003	D	Decapage	29640	28760	1128
RS114_BOUSKOUF		15/02/2003	E	Emprunt mat. base reme	30600	30680	992200
RS114_BOUSKOUF		12/03/2003	E	Emprunt mat. base reme	30740	30340	165700
RS114_BOUSKOUF		20/03/2003	E	Emprunt mat. base reme	30600	30340	717900
RS114_BOUSKOUF		20/03/2003	E	Emprunt mat. base reme	30740	30340	26373
RS114_BOUSKOUF		12/04/2003	E	Emprunt mat. base reme	30600	30340	
RS114_BOUSKOUF		15/04/2003	P	Purge	27627	28580	165140
RS114_BOUSKOUF		20/04/2003	P	Purge	29978	29978	14000
PH2_BRETT1		12/05/2003	D	Decapage	1080	1300	7000
CASA_SWALEM		12/05/2003	D	Decapage	220	1200	14000
RS114_BOUSKOUF		12/05/2003	D	Decapage	29500	30000	9200
RS114_BOUSKOUF		12/05/2003	D	Decapage	27400	27650	5450

2nd FIG Regional Conference

Exemple de graphe d'avancement



2nd FIG Regional Conference

Module DATA BASE

facilitates the interactive management of the spatial data base

offers the possibilities of:

- Consultation of the GIS data
- Edition of: Structures, constraints and road, work of earthwork and cleansing, general work and inheritance
- update and modification of the entities of a theme
- add, remove or refresh the fields of a theme
- consult and update rules of validation defined on entities and on attributes, the rules of connectivity
- Add data tables (Excel, DBASE, oracle) to the project

2nd FIG Regional Conference

Module TREATMENT

The most powerful module of this prototype GIS, treats

- spatial queries
- dynamic placement of events
- presents the results of the treatments.

2nd FIG Regional Conference

Module TREATMENT

spatial queries

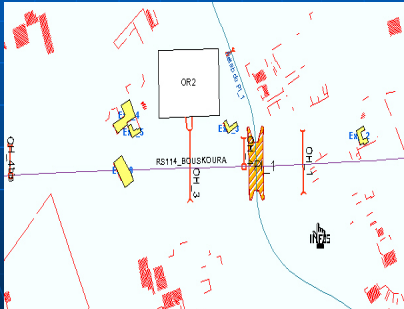
- - based on the spatial relations (intersection, union, inclusion in...) of the entities
- - expropriation : determine the properties to be expropriated within a highway corridor. the figure shows an example

Creation of the progress reports:

personalized reports, which can contain all information derived from the descriptive data tables of the entities.

2nd FIG Regional Conference

Highway corridor



2nd FIG Regional Conference

Module TREATMENT

Dynamic placement of punctual or linear objects per PK. Creation of dynamic graphic themes from text files

- creates a graphic theme for any information referred by Cartesian coordinates (x, y), stored in the data base (table or text file) the theme will be added automatically to the view

Adding CAD plans in 2 ways

- As a drawing: viewed such as conceived in the CAD software, preserving its characteristics: no analysis possible
- As a layer: plan converted with GIS format, used as a theme and possibility of analysis

Posting graphic symbols of the PK and PC

Analysis of events

- punctual-linear analysis,
- linear-linear analysis.

2nd FIG Regional Conference

Exemple de représentation graphique d'événements ponctuels représentant les accidents



2nd FIG Regional Conference

Exemple de représentation graphique d'événements linéaires Qualité de la chaussée sur différentes sections



2nd FIG Regional Conference

Functions of the "highway Editor"

- Placement of the PK in length:** automatically on a portion of the selected road, starting from the PK D of the road. (the PK No origin, the scale factor)
- Initialization of the Pk No:** allows the user to specify, for a new configured road, starting Pk No, the Pk No arrival, the other Pk will be automatically interpolated
- Interpolations of the zones without Pk No:** starting from the sections where PK are defined, PKs can be calculated for all the zones without PK No
- remove all the PK of the activated road.**
- reverse the order of the PK:** allows to change the order of the PKs and to traverse the road in the increasing direction of the PK or in the contrary direction.
- change the origin of the PK**

2nd FIG Regional Conference

Application

Phase II of the highway of the by-pass Casablanca

- length approximately 6 km
- Connects the exchanger of the RS114 at the origin of the highway CASA-El Jadida.
- Composed of
 - A section of highway (4.5km approximately)
 - 4 ways of re-establishment
 - A junction.(bifurcation)

2nd FIG Regional Conference

Application to phase II of the highway of Casablanca



2nd FIG Regional Conference

Projet de la phase II liste des sections configurées avec caractéristiques sémantiques

CODE_SECTION	NOM_SECTION	TYPE_SECTION	PK_DEPART	PK_ARRIVEE	LONGUEUR
CASA_SWALEM	Autoroute_Casa_Had_Soualem	Autoroute	0	1+200	1200
PH2_BRET1	Bretelle1	Bretelle	0	1+303.492	1303.492 m
PH2_BRET2	Bretelle2	Bretelle	0	0+773.323	773.323
PH2_PI1	Voie de rétablissement du PI1	Rétablissement	0	0+381.044	381.044
PH2_PI2	Voie de rétablissement du PI2	Rétablissement	0	0+980.291	980.291
PH2_PI3	Voie de rétablissement du PI3	Rétablissement	0	1+327.91	1327.91
PH2_PS1	Voie de rétablissement du PS1	Rétablissement	0	0+811.207	811.207
PH2_PV1	Voie de rétablissement du PV1	Rétablissement	0	0+213.211	213.211
RS114_BOUSKOURA	Phase II	Autoroute	27+394.682	31+600	4205.682

2nd FIG Regional Conference

Extrait de la table de configuration des ouvrages d'art

CODE_OA	CODE_SECTION	TYPE_OA	PK_OA	BIAIS_OA (gr)
OH_3	RS114_BOUSKOURA	Ouvrage hydraulique	27+700	100
OH_7	RS114_BOUSKOURA	Ouvrage hydraulique	30+650	98.78
PI_1	RS114_BOUSKOURA	Passage inférieur	27+627	78
PI_2	RS114_BOUSKOURA	Passage inférieur	30+971.2	128.36
PI_3	PH2_BRET1	Passage inférieur	0+165.95	100
PS_1	RS114_BOUSKOURA	Passage supérieur	29+978.7	79
PS_2	PH2_BRET1	Passage supérieur	0+591.5	98
PS_3	PH2_BRET1	Passage supérieur	0+764.17	70
PS_4	CASA_SWALEM	Passage supérieur	0+33.626	100
PV_1	CASA_SWALEM	Passage véhicule	0+300	70

2nd FIG Regional Conference

CONCLUSION

- Prototype remains open to the development of other applications
- Constitutes a first solution GIS for the phase exploitation of road and highway work.
- Tested successfully for the follow-up of a section of highway in the area of Casablanca.
- Constitutes a reliable base that allows indicators of the follow-up and measurement of the performances

2nd FIG Regional Conference

■ Thank you for your Attention

2nd FIG Regional Conference