



International Federation of Surveyors  
Fédération Internationale des Géomètres  
Internationale Vereinigung der Vermessungsingenieure

## **FIG Newsletter July/August 2015**

Dear Colleague,

Welcome to the FIG Newsletter, which brings you latest information about FIG and its activities. The information referred here is in full length available on the FIG web site. Thus the Newsletter is produced to inform you what has happened recently and what interesting things are going to take place in the near future. The FIG Newsletter is circulated monthly or bi-monthly by e-mail. The referred articles are in English and written in a way that you are able to extract them to your national newsletters or circulate to your members and networks.

### **Article of the Month**

Each month on the FIG web site we publish a paper called the Article of the Month. This is a high-level paper focusing on interesting topics to all surveyors. It can be picked up from a FIG conference or another event.

**August 2015 – August 2015 - Chris Williams-Wynn, South Africa: What People Want.** This paper was presented at the FIG Working Week in Sofia, Bulgaria, 17-21 May 2015. Land administration in South Africa is an interesting study because it consists of a dual system that has promoted investment in areas where private property rights were permitted, but relegated the Traditional Communities into poverty and disinvestment. The paper shows that the concept of ownership, land rights and title deeds goes much further than the ability to buy and sell property.

[www.fig.net/resources/monthly\\_articles/2015/williams-wynn\\_august\\_2015.asp](http://www.fig.net/resources/monthly_articles/2015/williams-wynn_august_2015.asp)

**July 2015 - Daniel Steudler, Switzerland: Dimension Cadastre – Stepping Beyond Limits.** The paper was presented at the FIG Working Week in Sofia, Bulgaria, 17-21 May 2015 and questions what will happen to the traditional surveyor. Many factors have an impact on the way how geographic information systems, including cadastres, are perceived.

[www.fig.net/resources/monthly\\_articles/2015/steudler\\_july\\_2015.asp](http://www.fig.net/resources/monthly_articles/2015/steudler_july_2015.asp)

### **Meet FIG at stand 4 / F4.046**



Again this year, FIG will be represented at InterGeo. 2015 InterGeo takes place in Stuttgart, German 15-17 September 2015. FIG Office, represented by Claudia, Hanne and Louise, will be at the stand and around. FIG President Chryssy Potsiou will participate in the opening, and she will visit the exhibition on Tuesday 15 September. FIG Foundation President John Hohol will also be present as well as Vice President Rudolf Staiger. Come around and have a talk with us.

## Call for bids – are you interested in hosting FIG Working Week 2020



FIG member associations are invited to consider making a bid to host the FIG Working Week 2020 together with FIG. At its meeting in Christchurch, New Zealand 2 and 6 May 2016, the FIG General Assembly will select the host and venue for the Working Week 2020. The Council has prepared bidding guidelines for making the bid. These guidelines explain in detail the information that is required for a successful bid.

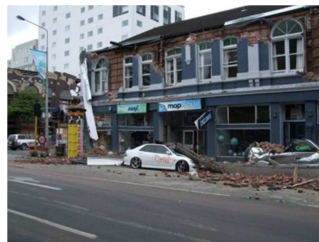
Deadline: 30 November 2015

[www.fig.net/organisation/general\\_assembly/agendas\\_and\\_minutes/2016/bids/FIG\\_WW2020\\_bidding\\_material.pdf](http://www.fig.net/organisation/general_assembly/agendas_and_minutes/2016/bids/FIG_WW2020_bidding_material.pdf)

## FIG Working Week 2016 – Call for papers



It is our privilege and honour to invite you to the **FIG Working Week 2016** to be held from **2 to 6 May 2016**. The Working Week is hosted by the International Federation of Surveyors, FIG and the New Zealand Institute of Surveyors, NZIS, as the local host.

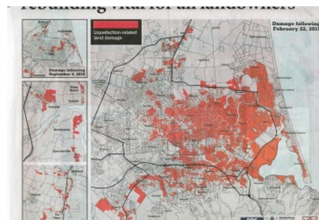


Post-earthquake Christchurch is an ideal venue for an international surveying conference with the theme "**Recovery from Disaster**". It is being held at a time when considerable rebuilding and renewal is underway throughout the city and the areas of Canterbury affected by the 2010-2011 earthquakes sequence. Many inhabitants throughout the World face various kinds of disasters, apart from earthquakes as in Christchurch, such as flooding, storm events, tsunamis, drought, the after effects of conflict etc. that are a world-wide challenge, especially taking the effects of climate change into consideration. Disasters, natural or otherwise, directly impact surveyors and spatial professionals and their work on the land, under the seas, in the air and in space.



The FIG 2016 Call for Paper is out! This Call for Papers is announced both for **peer review papers** and **non-peer review papers**.

We invite you to submit abstract and full paper for peer review paper by **1 October 2015** and abstract for non-peer-review paper by **15 November 2015**.

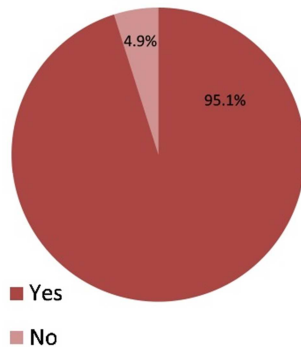


The call for papers is announced at:  
[www.fig.net/fig2016/call.htm](http://www.fig.net/fig2016/call.htm)

More information at: [www.fig.net/fig2016](http://www.fig.net/fig2016)

## Evaluation of the FIG Working Week 2015 in Sofia, Bulgaria

Would you recommend FIG Conferences to colleagues and friends?



Shortly after this year's FIG Working Week in Sofia, Bulgaria a post-conference survey was sent to the attendees. We highly appreciate the feedback - complaints, compliments and great ideas, which we have received in the post survey. The comments will enable us to better plan and execute next year's conference in Christchurch, New Zealand.

A majority of the participants are generally happy with the FIG Working Week in Sofia, Bulgaria. 90 per cent of the respondents of the post-conference survey indicated that they were overall satisfied. However, the survey also showed some areas of dissatisfaction, hereunder obsolete conference facilities; varying scientific level and not so inspiring lunches.

Read the evaluation:

[www.fig.net/news/news\\_2015/2015\\_08\\_fig2015\\_postevaluation.asp](http://www.fig.net/news/news_2015/2015_08_fig2015_postevaluation.asp)

## Technical Seminar on Vertical Reference Frames in Practice, 27-28 July 2015, Singapore



The seminar organised by FIG Commission 5 in cooperation with IAG, ICG and SLA had a particular focus on vertical reference frames, in response to requests from the region. This complemented a previous seminar held in Manila in 2013, which focussed on 3D frames. Read the report, check the proceedings and have a look at the photos.

[http://www.fig.net/news/news\\_2015/2015\\_07\\_vrpf\\_comm5.asp](http://www.fig.net/news/news_2015/2015_07_vrpf_comm5.asp)

## FIG President attends WPLA Workshop - 25-26 June 2015, Moscow, Russia



The purpose of the workshop was to share experience and practices in registration and cadastral systems enhancement within the framework of land administration. The seminar covered issues of registration and cadastral systems development, the use of information technologies aimed at improving the mentioned systems, as well as issues of information interaction between subjects of land administration.

[http://www.fig.net/news/news\\_2015/2015\\_06\\_wpla.asp](http://www.fig.net/news/news_2015/2015_06_wpla.asp)

## FIG President Potsiou meets with all 6 Russian FIG Members, 15-18 June 2015, Irkutsk, Russia



FIG has 6 members from Russia. A meeting with all six members and FIG President Potsiou was organised during the All-Russian annual congress of cadastral engineers in June 2015.

[http://www.fig.net/news/news\\_2015/2015\\_06\\_irkutsk.asp](http://www.fig.net/news/news_2015/2015_06_irkutsk.asp)

## **Initial Meeting on International Construction Measurement Standard (ICMS), 16 – 17 June 2015, Washington DC, US**



See Lian Ong, Chair of FIG Commission 10, is FIG nominee for the Standard Setting Committee of ICMS. ICMS focuses on the lack of global standards in construction measurement and reporting. The meeting also included discussion on the administration of ICMS and protocols for moving forward with the effort, such as the governance model, standard-setting process, implementation, and communications. See Lian Ong signed agreement on behalf of FIG.

[http://www.fig.net/news/news\\_2015/2015\\_06\\_ipms.asp](http://www.fig.net/news/news_2015/2015_06_ipms.asp)

## **Vacancies and project opportunities**

Check the vacancies submitted by: UN-Habitat/GLTN, IODE and ITC

[www.fig.net/about/jobs/index.asp](http://www.fig.net/about/jobs/index.asp)

## **Forthcoming events**

### **FIG Commission 2 and 7 Workshop in Kathmandu Nepal, 25-27 November 2015**



FIG Commission 2 and 7 invite to the International Workshop on the "Role of Land Professionals and SDI in Disaster Risk Reduction: in the Context of Post 2015 Nepal Earthquake". The Workshop is organized in cooperation with ISPRS, Nepal Institution of Chartered Surveyor and Nepal Remote Sensing and Photogrammetric Society.

[www.workshopnepal2015.com.np/](http://www.workshopnepal2015.com.np/)

### **FIG Commission 3 and 7 Workshop Malta, 16-20 November 2015**



FIG Commission 3, Commission 7 and Malta institution of Surveyors are organising a Joint Workshop and Commission 7 Annual Meeting on Crowdsourcing of Land Information. This workshop will explore how we can engage citizens through crowdsourcing within a new citizen collaborative model for land administration that would be much more inclusive for the disadvantaged and vulnerable, increase access to land markets and help support poverty reduction.

[www.fig.net/news/news\\_2015/2015\\_08\\_com3\\_7\\_malta.asp](http://www.fig.net/news/news_2015/2015_08_com3_7_malta.asp)

## **GIM International Summit**



FIG is an endorsing partner of the inaugural GIM International Summit. The discussions at this high-end conference will be fuelled by speakers external to the geomatics industry who will explain the needs and desires of the outside world and suggest how the geomatics sector should respond.

[www.fig.net/news/news\\_2015/2015\\_05\\_gim\\_summit.asp](http://www.fig.net/news/news_2015/2015_05_gim_summit.asp)

### **15-17 September 2015, Stuttgart, Germany**

InterGeo 2015, organised by DVW

Web site: [www.intergeo.de](http://www.intergeo.de)

### **3 – 6 October 2015, Sharm El-Sheikh, Egypt**

"Surveying & Development" regional conference organised by The Arab Union of Surveyors (AUS), The National Water Research Center (NWRC), The Egyptian Committee for Surveying and Mapping (ECSM), and the Egyptian Survey Authority (ESA).

Invitation: [http://77.243.131.160/events/2015/regional\\_conf\\_egypt\\_2015.pdf](http://77.243.131.160/events/2015/regional_conf_egypt_2015.pdf)

### **22-24 October, Rabat, Morocco**

7th National Congress on Land Policy Fit for Purpose the Sectorial Strategies incl. Expert Forum: A view of the international experts. Organised by ONIGT, supported by FIG Commission 7.

Invitation: [http://www.fig.net/events/2015/onigt\\_oct.pdf](http://www.fig.net/events/2015/onigt_oct.pdf)

### **6-7 November, Sofia, Bulgaria**

XXV International Anniversary Symposium organised by Union of Surveyors and Land Managers in Bulgaria

### **8-10 November, Nairobi, Kenya**

FIG Regional Capacity Development Network - Africa. Challenges and Opportunities in Facing the SDG's: Generational Diversity in the Land Professional Sector. The Lukenya Gateway, Nairobi Kenya. Invitation sent to FIG Member Associations

### **16-20 November, Malta**

Commission 3 and 7 meeting 2015. Crowdsourcing of Land Information. Joint FIG Commission 3 and 7 meeting organised by FIG Commission 3 and 7 in cooperation with Malta Institution of Surveyors.

<http://www.fig.net/events/2015/com3-7-invitation.pdf>

### **25-27 November 2015, Kathmandu, Nepal**

FIG Commission 2 Workshop 2015, Kathmandu, Nepal "Strengthening Education for Land Professionals and Opportunities for SDI Development. Jointly organised by FIG Commission 2 and ISPRS Working Group IV/4 together with the Nepal Institution of Chartered Surveyors (NICS) and the Nepal Remote Sensing and Photogrammetric Society (NRSPS).

### **9-11 December, Sydney, Australia**

The 9th International Symposium on Mobile Mapping Technology – MMT2015

Web site: [www.mmt2015.org](http://www.mmt2015.org)

Contact: [Jinling.Wang@unsw.edu.au](mailto:Jinling.Wang@unsw.edu.au)

### **2-6 May, Christchurch, New Zealand**



FIG Working Week and General Assembly.

Web site: [www.fig.net/fig2016](http://www.fig.net/fig2016)

For **additional FIG and FIG Commission events** see always up-to-date information at: [www.fig.net/events/index.asp](http://www.fig.net/events/index.asp)

### FIG on Social Media

Remember that you can follow FIG on the social media.

If you have not already joined, join us today:

Facebook: <https://www.facebook.com/#!/internationalfederationofsurveyors>

Twitter: [https://twitter.com/FIG\\_NEWS](https://twitter.com/FIG_NEWS)

LinkedIn: [http://www.linkedin.com/groups?gid=2669121&trk=myg\\_ugrp\\_ovr](http://www.linkedin.com/groups?gid=2669121&trk=myg_ugrp_ovr)

### Subscribe to the FIG e-Newsletter

The monthly e-Newsletter is mailed to all members, commission delegates and all interested partners. FIG offers the e-Newsletter to all members of member associations and other interested in FIG. If you don't already get your copy you can order it now at: [www.fig.net](http://www.fig.net)

If you want to cancel your subscription please send an email to the FIG office, email: [FIG@fig.net](mailto:FIG@fig.net).

Kind regards,

**Ms. Louise Friis-Hansen**

FIG Manager



International Federation of Surveyors  
Fédération Internationale des Géomètres  
Internationale Vereinigung der Vermessungsingenieure

International Federation of Surveyors

Kalvebod Brygge 31-33

DK-1780 Copenhagen V

Tel. + 45 3886 1081

Direct: + 45 9391 0810

[louise.friis-hansen@fig.net](mailto:louise.friis-hansen@fig.net)

[www.fig.net](http://www.fig.net)



Recovery from disaster

Web site: [www.fig.net/fig2016](http://www.fig.net/fig2016)

**FIG WORKING WEEK 2017**



Web site: [www.fig.net/fig2017](http://www.fig.net/fig2017)

Subscribe monthly FIG e-Newsletter at: [www.fig.net/pub/subscriptions/getnewsletter.htm](http://www.fig.net/pub/subscriptions/getnewsletter.htm)  
Join FIG at LinkedIn: <http://www.linkedin.com/groups?gid=2669121&trk=group-name>  
Join FIG at Twitter: [https://twitter.com/FIG\\_NEWS](https://twitter.com/FIG_NEWS)  
Join FIG at Facebook: <https://www.facebook.com/#!/internationalfederationofsurveyors>