

LAND INFORMATION MANAGEMENT IN CHILE

Rodrigo Barriga
Álvaro Medina

Aguascalientes, octubre de 2004

Agenda

1. Chile National Context.
2. Institutional Arrangements.
3. Land Information Management Policy
4. Land Information, present stage
5. Land Administration
6. Problems & Constraints
7. Potential Challenges

1. Chile National Context



CHILE

- Area: 756.626 km²
- Population:
 - Urban: 13.090.113
 - Rural: 2.026.322
 - Total: 15.116.435
- Geography: Diverse
- Climate: Warm, the Humboldt Current regulates it.



2. Institutional Arrangements

Political Constitution of the State of Chile

Core Principles

Administrative & Political Divisions

National Objectives

Administrative Structure of the State

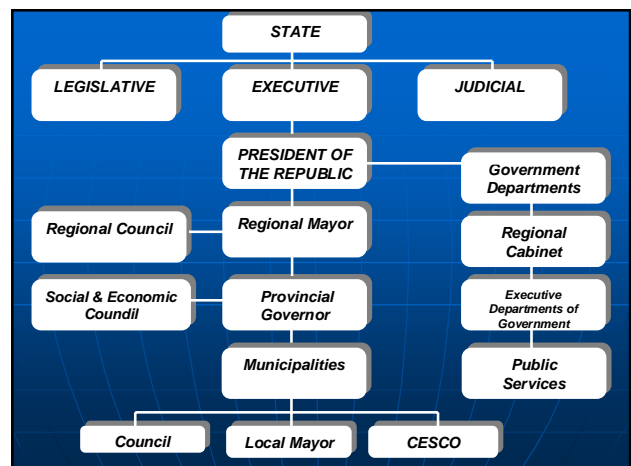
Political & Administrative Division



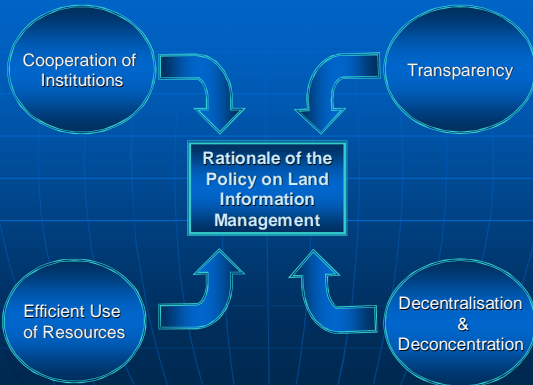
Regions

Provinces

Communes

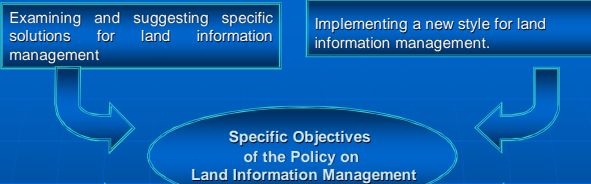


3. Policy on Land Information Management



Primary Objective of the Policy on Land Information Management

Modernizing Land Information Management in Chile, in accordance with the efforts the country is doing to reform and modernize the State, achieve transparency, economic growth and social development.



4. State-of-the-art management of land information in the country.

Institutions using formal procedures for production, management and use of IT.

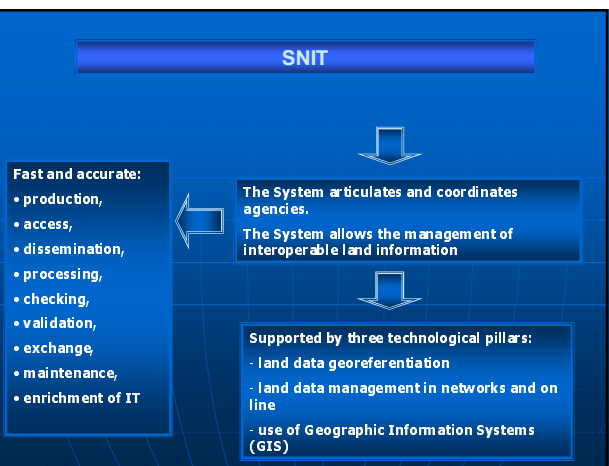
Concepts of e-Government in the State modernisation process.

Land information management involves several themes where public institutions are producers and-or users.

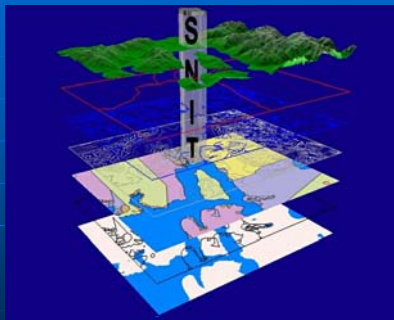
- Basic Land Information
- Natural Resources
- Environment
- Infrastructure.
- Property
- Social & Economic Issues
- Land Administration
- Cultural Heritage.

5. Land Administration

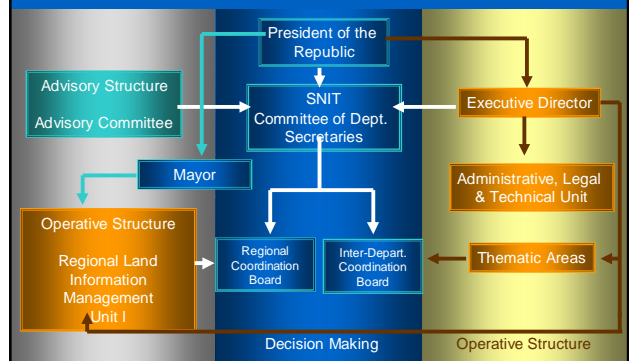
The National System of Land Information (SNIT), will be formed by Government agencies that develop and use land information. This system is aimed at ensuring, supporting and optimizing the implementation and full performance of the Policy on Land Information Management and will have the political authority and technical capacity to do so.



Interoperability



SNIT Structure Chart



SNIT Thematic Areas

AREA	INSTITUCIONES
INFRAESTRUCTURA OO PP	MEP; MINVU; SERVU; SIB; TRANSPORT; SUBTEL; SE; SALTARROSS; SEC. TRAF; MINSA; MINEDUC; ORENA; MUNJUS; CONAMA; CORREDO; EFE; METRO
SOCIAL MIDEPLAN	MIDEPLAN; CONADI; INTEGRAL; IN. IM. F. OES; C. HOEP FONADIS; CONACE; ENDE; SERNAME; INDAPI; MENSAL; INEL; MENEDES; MEN TRAD; SERNAME; MINJUS; MENTATTA; MIN. CR
RECURSOS NATURALES CIREN-CORFO	CIREN; CONAMA; IN. FOR; CONAF; SERNAME; MIN. SERNAME; A; IFO; SAG; CORPAC; DPE; DGA; SUBPESCA
INFORMACION TERRITORIAL BASICA IGM	IGM; SIDA; SAF; CIREN; INE; ACH
PROPIEDAD SII	SII; MIN; CBR; CIREN; SERVU; SERNAME; INE; TESORERA; MEP; ACH; MUNI; MINVU; COOPA
PA TRIMONIO DIBAM	DIBAM; CNCR; SERNAME; CIREN; CONAF; CONICY T; MEP; MIN; CONACE; CIREN; CONAMA; B. CONGRESO; SCH; ARQUEOLOGO
PLANIFICACION T ERRT. MINVU	MENVU; MEP; MIN. TRATEL; MIN; MENAGRI; MIDEPLAN CONAMA
REGIONES SUBDERE	GOBIERNOS REGIONALES

SNIT's Accomplishments (2001 - 2002)

- Created by Presidential Instruction #14, of Sept. 25, 2001.
- Country-wide Land Information Inventory.
- Basis for Land Data Standardization.
- National Plan for Land Information Capture and Standardization 2003–2005 (Presidential Instruction #2 of April 7, 2003).

SNIT's Accomplishments (2003)

- Structure of Core Data.
- Regional Boards to support the SNIT project.
- Prototype of the Web Portal to have access to IT.
- Advisory Committee to support the SNIT
- Integration into the international community of Geospatial Data Infrastructure (GDI).
- Formulation of a State Policy for Land Information management

SNIT's Challenges for 2004

- Blueprint for a Law on Land Information Policy in Chile.
- Developing the National Metadata Portal.
- GSDI-9 Conference, 09 -13.OCT.2006

NATIONAL METADATA (SNIT)

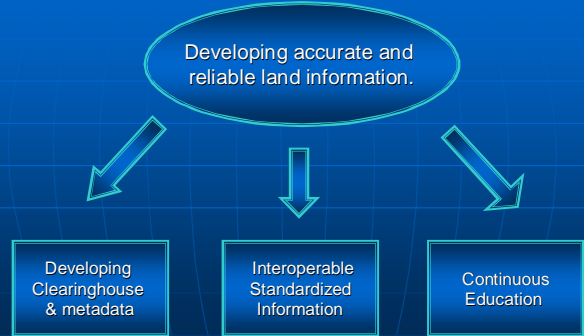
- 2003 – DESIGN STAGE
- 2004 – CONSTRUCTION STAGE
- 2005 - NATIONAL COVERAGE



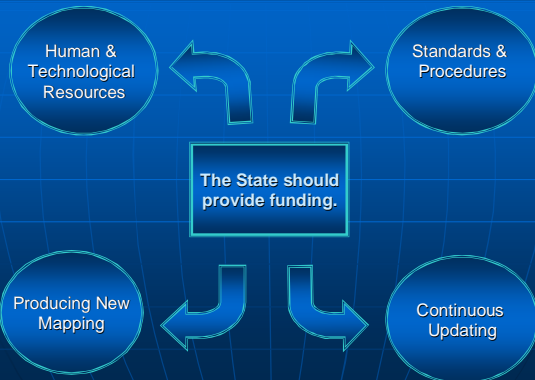
6. Problems & Constraints

- Overcome the traditional land information management, which has always been sector-oriented and compartmentalized.
- Land information management has not developed homogeneously in the different State institutions.

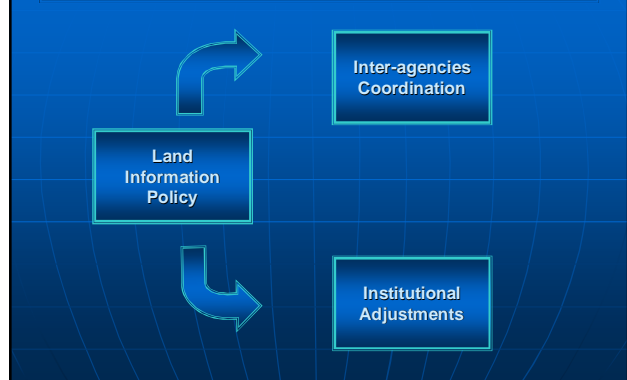
7. Potential Challenges (1)



Potential Challenges (2)



Potential Challenges (3)



Acknowledgements

- City & Committee of Territory Department Secretaries.
- SNIT's Technical Stewardship.
- Members of the SNIT's Inter-Departmental Coordination Board).
- SNIT's Regional Boards Coordinators and Representatives.
- Members of the Advisory Committee supporting the SNIT.
- Members of SNIT's Technical Unit.
- Representatives of Government Departments.
- Representatives of Regional Governments.
- Several other Government agencies from the State of Chile.

Thank you.