



GIS Supporting Landscape Issues in Land Consolidation Works in Poland

Adrianna Pulecka, Przemysław Kupidura

WARSAW UNIVERSITY OF TECHNOLOGY

agricultural structure in Poland

- high scattering of agricultural parcels
- difficulties in income generation
- 50% of farms not involved in market production

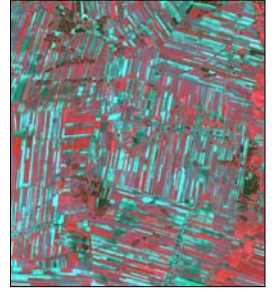


FIG Working Week, Hong Kong 13-17 May 2007

land consolidation in Poland

main goals:

- protection of the natural environment
- management of rural landscapes
- delineation of lands for technical and social infrastructure
- water management

FIG Working Week, Hong Kong 13-17 May 2007

aim of the project

to support the decision-making process related to land consolidation works, with selected spatial data bases using GIS technology

FIG Working Week, Hong Kong 13-17 May 2007

Land and Buildings Cadastre

data concerning:

- cadastral unit
- register parcels included within the district
- buildings, which are the elements of real property
- location of buildings which are the separate property
- land use units and soil classes

FIG Working Week, Hong Kong 13-17 May 2007

Land and Buildings Cadastre

data concerning:

- cadastral unit
- register parcels included within the district
- buildings, which are the elements of real property
- location of buildings which are the separate property
- land use units and soil classes

FIG Working Week, Hong Kong 13-17 May 2007

Topographic Database

Components:

- ORTO – database of digital orthoimages
- NMT – Digital Terrain Model database
- TOPO – data on location and features of topographic objects
- KARTO – data stored in TOPO, presented in the form of a topographic map

FIG Working Week, Hong Kong 13-17 May 2007

Topographic Database

Components:

- ORTO – database of digital orthoimages
- NMT – Digital Terrain Model database
- TOPO – data on location and features of topographic objects
- KARTO – data stored in TOPO, presented in the form of a topographic map

FIG Working Week, Hong Kong 13-17 May 2007

case study – general overview



FIG Working Week, Hong Kong 13-17 May 2007

case study – general overview



FIG Working Week, Hong Kong 13-17 May 2007

case study – general overview



FIG Working Week, Hong Kong 13-17 May 2007

register parcels

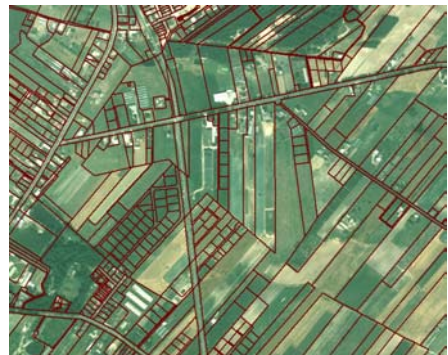


FIG Working Week, Hong Kong 13-17 May 2007

TBD – point features



FIG Working Week, Hong Kong 13-17 May 2007

TBD – point features



FIG Working Week, Hong Kong 13-17 May 2007

TBD – point features



FIG Working Week, Hong Kong 13-17 May 2007

TBD – polyline features



FIG Working Week, Hong Kong 13-17 May 2007

TBD – polyline features



FIG Working Week, Hong Kong 13-17 May 2007

terrain relief



FIG Working Week, Hong Kong 13-17 May 2007

terrain relief



FIG Working Week, Hong Kong 13-17 May 2007

protected areas



FIG Working Week, Hong Kong 13-17 May 2007

Conclusive remarks

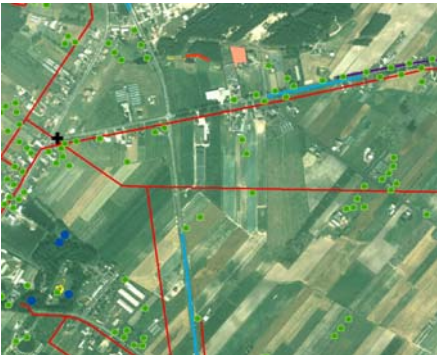


FIG Working Week, Hong Kong 13-17 May 2007

Conclusive remarks



FIG Working Week, Hong Kong 13-17 May 2007

Conclusive remarks



FIG Working Week, Hong Kong 13-17 May 2007

That's all I have...

FIG Working Week, Hong Kong 13-17 May 2007