

FIG Commission 7 Cadastre and Land Management  
Working Group 7.1 Fit-For-Purpose Land Administration  
Activities and Achievements 2015 – 2018

XXVI FIG CONGRESS 2018

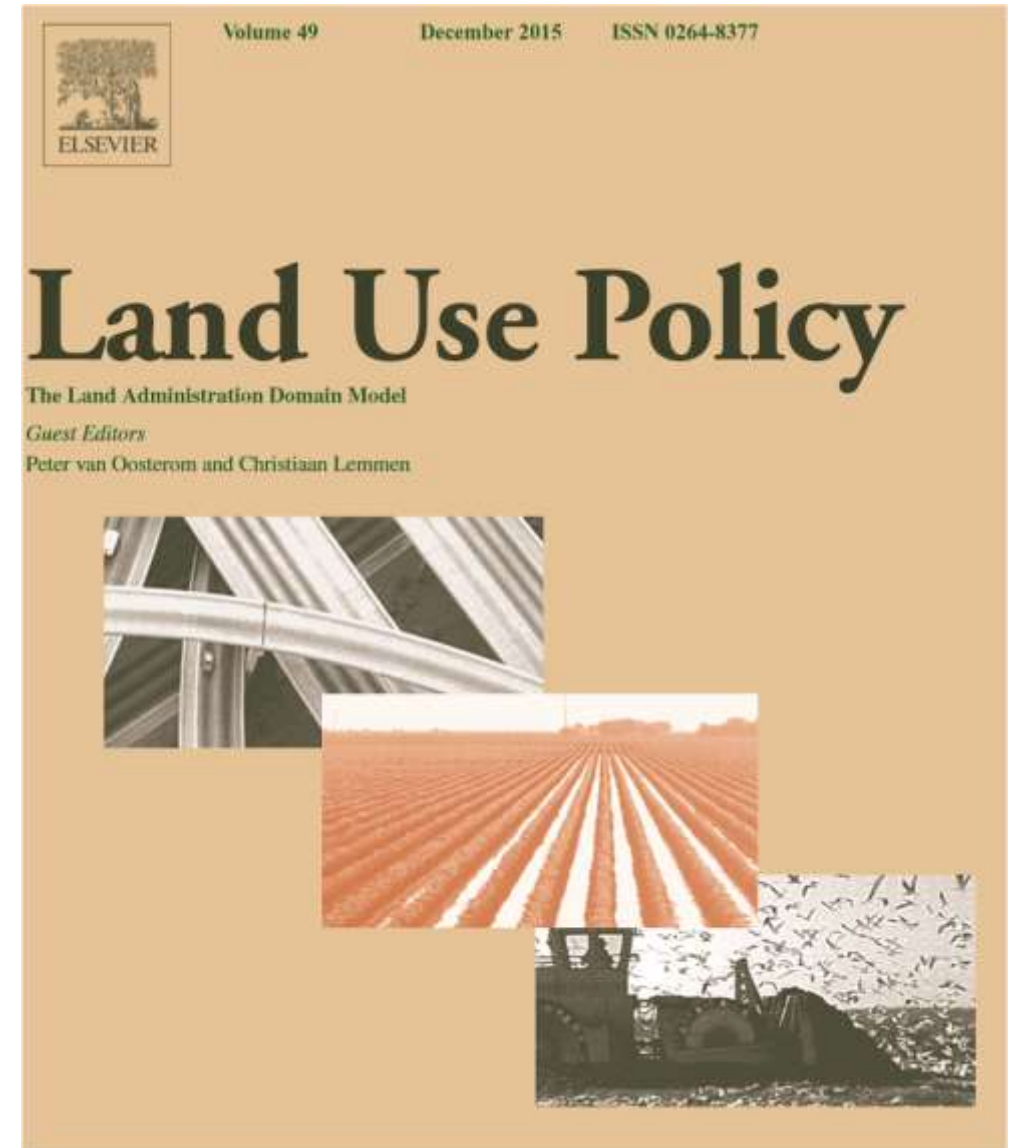
Istanbul, Turkey

8 May 2018

Christiaan Lemmen



Special Issue on LADM in  
Land Use Policy  
December 2015

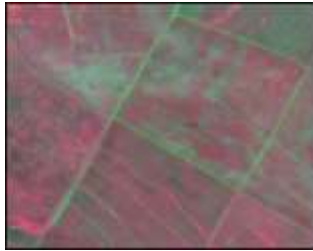


# Special Issue GIM International on Fit-For-Purpose Land Administration August 2016



*New Publication: Fit-for-purpose Land Administration*

# Guiding Principles for Country Implementation



## Apps for Land Administration

Open Standards Developed  
for **Procurement and  
Implementation** of Land  
Administration Systems

*FIT-FOR-PURPOSE APPROACHES ARE POSSIBLE BASED ON INSAR TECHNOLOGIES*

## Airborne Dual-band Radar for Cadastre



## Mobile GIS Proven to Transform Land Administration

Enabling Global  
Land Tenure Security Using  
**High-resolution Imagery**

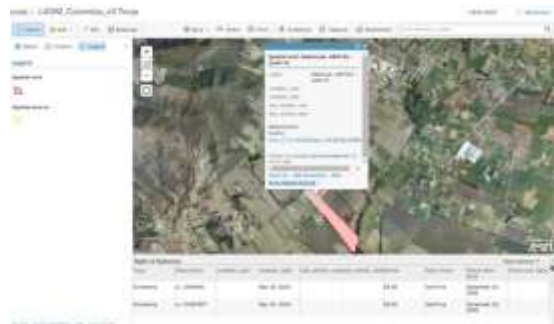
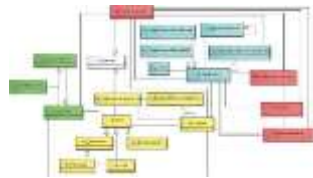
Towards Automated  
Detection of **Visual  
Cadastral Boundaries**

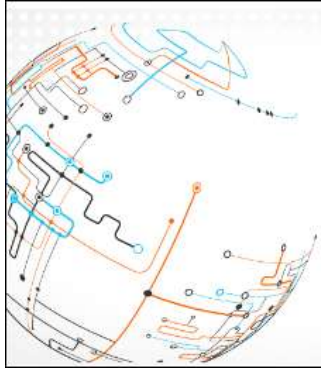


Geospatial Information  
Management Towards  
**Good Land Governance**



# Land Administration Devices





# Land and Poverty Conference 2016: Scaling up Responsible Land Governance

March 14-18, 2016  
Washington, DC

- 3 sessions on FFP
- papers Stig Enemark, Robin McLaren, Christiaan Lemmen
- masterclass FFP after conference
- statement FFP by Jorge Munoz, World Bank

# OGC Land Administration DWG

- Pre-Conference Workshop World Bank in Washington
- OGC Consultation
- Domain Working Group LA in OGC
- <http://www.opengeospatial.org/projects/groups/landadmin>

# OGC Land Administration DWG



[About](#) ▾ [Standards](#) ▾ [Innovation](#) ▾ [News & Events](#) ▾ [Membership](#) ▾ [Resources](#) ▾

## Land Administration DWG

### Chair(s):

No Chairs Identified

### Group Charter:

[Download Charter document](#)

### Group Description:

---

## 1. Introduction and Problem Statement

---

This Domain Working Group (DWG) charter defines the role for OGC activities related to land administration. Worldwide, effective and efficient land administration is an ongoing concern, inhibiting economic growth and property tenure. Only 40 countries around the world have mature land information systems. Of the developing nations, most have 10% or less of their land in formal systems. In many nations, land administration systems are either non-existent or manual paper-based or semi-automated systems subject to limited public access. All of these approaches are at significant risk of data loss and failure due to disasters and lack of interoperability. The charter members of this DWG seek to identify enabling standards and best practices to guide countries in a programmatic way to establish more cost effective, efficient and interoperable land administration capability, to upgrade current manual to semi-automated processes, and to suggest solutions that are more automated and flexible to new data sources technologies. These challenges are faced today in countries considered as “developing” as well as those designated as Official Development Assistance (ODA) recipients.

The key to beneficial use of land administration data by all stakeholders is the ability of land administration frameworks to support the regulatory and policy environments that are often unique to individual jurisdictions and nations.



UN



UN-GGIM

United Nations Committee of Experts on  
Global Geospatial Information Management

**FOURTH HIGH LEVEL FORUM ON UN GLOBAL GEOSPATIAL INFORMATION MANAGEMENT**

*UNECA's Headquarters in Addis Ababa, Ethiopia, from 20-22 April 2016*

### Addis Ababa Declaration

- support to the development of FFP LA and geospatial information
- particularly in developing countries
- authoritative and consistently available
- formal, informal and customary people to land relationships
- political awareness has to be advocated and increased
- progress needs to be measured
- standards need to be used – LADM is recognised here
- statistical/geospatial data to be further integrated



**UN-GGIM**  
UNITED NATIONS  
COMMITTEE OF EXPERTS ON  
GLOBAL GEOSPATIAL  
INFORMATION MANAGEMENT

**Addis Ababa Declaration  
Geospatial Information Management Towards Good Land  
Governance  
for the 2030 Agenda**

- affirm the importance of good land administration and management as the pillar of good governance and efficient government to address the challenges and opportunities for the 2030 Agenda specifically supporting the development of **fit-for-purpose land administration** and geospatial information, particularly in developing countries

**Addis Ababa Declaration  
Geospatial Information Management Towards Good Land  
Governance  
for the 2030 Agenda**

- develop and agree on a set of fundamental geospatial information elements for land governance as a subset of the UN-GGIM fundamental data themes aligned with the SDG global indicator framework, taking into account the **ISO 19152 Land Administration Domain Model** and progress in multi-dimensional cadastre and city models;

# lcsymposium.nl

[HOME](#) [PROGRAMME](#) [REGISTRATION](#) [LOCATION](#) [ORGANISATION](#) [CONTACT](#)

## Symposium on Land Consolidation and Land Readjustment for Sustainable Development

9 to 11 November 2016 | Apeldoorn | The Netherlands

Welcome at the official website of the international symposium on land consolidation and land readjustment.

We face great challenges in terms of food security for a growing world population and the need for sustainable development. This symposium will address the role of land consolidation and land readjustment in relation to these challenges. It will give participants the opportunity to discuss strategies for sustainable development and to design resilient landscapes that meet the needs of society. The symposium will focus on four themes that can be addressed from a historical perspective, from current developments and from the expected needs in the future.

The symposium provides a unique opportunity to share your knowledge and experiences with fellow scientists and practitioners working on land consolidation and land readjustment from all over the world. We have an attractive programme with a mixture of keynotes, technical sessions, field trips and social activities. The organising institutions (FIG, FAO, the Dutch Cadastre, Land Registry and Mapping Agency, and LANDNET) cordially invite you to join the event.

[REGISTRATION](#)





[DETAILED PROGRAMME](#)


[IMPORTANT DATES](#)


[PROGRAMME](#)

[CONTACT](#)

Supported by

    **Food and Agriculture Organization of the United Nations**

 **THE WORLD BANK**

 **GLTN**



## Symposium on Land Consolidation and Land Readjustment for Sustainable Development

9 to 11 November 2016 | Apeldoorn | The Netherlands

- FIG, FAO, Landnet, Kadaster
- Themes:
  - Land administration, land consolidation and readjustment
  - Good governance
  - Sustainable development
  - Financial arrangements
- Organising Committee – chair Paula Dijkstra
- Programme Committee – chair Marije Louwsma
- Call for abstracts – submit before 1 June



Thank You!

**GLTN**  
GLOBAL LAND TOOL NETWORK

BRIEF 1/2016

# FIT-FOR-PURPOSE LAND ADMINISTRATION

KEY DESIGN PRINCIPLES FOR RURAL AND URBAN AREAS

Photo: © Getty

In most developing countries, and for 70 per cent of the world's population, people are excluded from participating in formal land administration systems and cannot register and safeguard their land rights. The majority of these people are the poor, women and the young, vulnerable in society. Most of the existing mechanisms of land administration have been designed and focused around the interests of wealthy and experienced or elite few, solutions are required that can deliver security of tenure at scale and affordable, can be rapidly developed and incrementally improved over time. The focus should be on a "fit-for-purpose" approach.

Building from the June 2014 IFC and World Bank publication on Fit-for-Purpose (FFP) Land Administration, this brief presents the IFC approach, the intended principles to develop a fit-for-purpose (FFP) design for rural and urban areas, key success factors for building the spatial, legal and institutional framework and some guidance to implementing the FFP approach.

**UN HABITAT**  
FOR A BETTER URBAN FUTURE

**IFC**  
INTERNATIONAL FINANCIAL CORPORATION

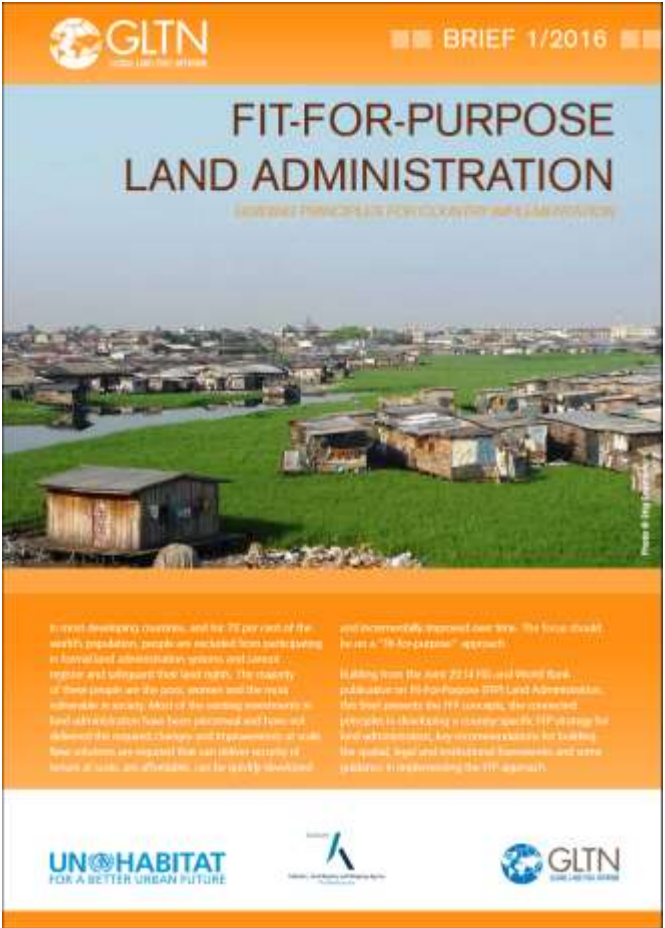
**GLTN**  
GLOBAL LAND TOOL NETWORK

# Overview

- Special Issue Land Use Policy
- World Bank Land and Poverty Conference
- UN GGIM High Level Meeting
- Workshop 3D Cadastre
- Land Consolidation – Land Readjustment



# Thank You!



**GLTN**  
GLOBAL LAND TOOL NETWORK

BRIEF 1/2016

## FIT-FOR-PURPOSE LAND ADMINISTRATION

KEY DESIGN PRINCIPLES FOR RURAL AND URBAN INFORMAL SETTLEMENTS

Photo: © Getty Images

In most developing countries, and for 70 per cent of the world's population, people are excluded from participating in formal land administration systems and cannot register and safeguard their land rights. The majority of these people are the poor, women and the young, vulnerable in society. Most of the existing mechanisms of land administration have been designed and focused around the formal, legally and transparently established systems. Informal settlements, which are often the result of urbanisation, are often excluded from the formal land administration system and are not recognised as legitimate. This exclusion has led to the development of informal settlements, which are often the result of urbanisation, and are not recognised as legitimate. This exclusion has led to the development of informal settlements, which are often the result of urbanisation, and are not recognised as legitimate.

Building from the June 2014 IFC and World Bank publication on Fit-for-Purpose (FFP) Land Administration, this brief presents the FFP approach, the intended principles to develop a fit-for-purpose FFP strategy for rural and informal settlements, key success factors for building the spatial, legal and institutional framework, and some guidance to implementing the FFP approach.

**UN HABITAT**  
FOR A BETTER URBAN FUTURE

**IFC**  
INTERNATIONAL FINANCIAL CORPORATION

**GLTN**  
GLOBAL LAND TOOL NETWORK