

Presented at the FIG e-Working Week 2021,
21-25 June 2021 in Virtually in the Netherlands

SMART SURVEYORS FOR LAND AND WATER MANAGEMENT CHALLENGES IN A NEW REALITY



eWORKING WEEK 2021
20-25 JUNE

Anouk van Stokkom, WWF
10885

An Innovative Early Warning System To Tackle Illegal Deforestation
23/06/2021, 20:00–21:30 CEST

ORGANISED BY



PLATINUM SPONSORS



Deforestation threatens the earth's species and climate



90,000 km²

Each year an area the size of Portugal is deforested. Deforestation decimates habitats for 100,000+ species, among which are the forest elephant, gorilla, orangutan and rhino



6.7 billion tonne CO₂

The annual greenhouse gas emissions of deforestation-related activities account for 15% of global emissions, equivalent to the emissions of the entire USA



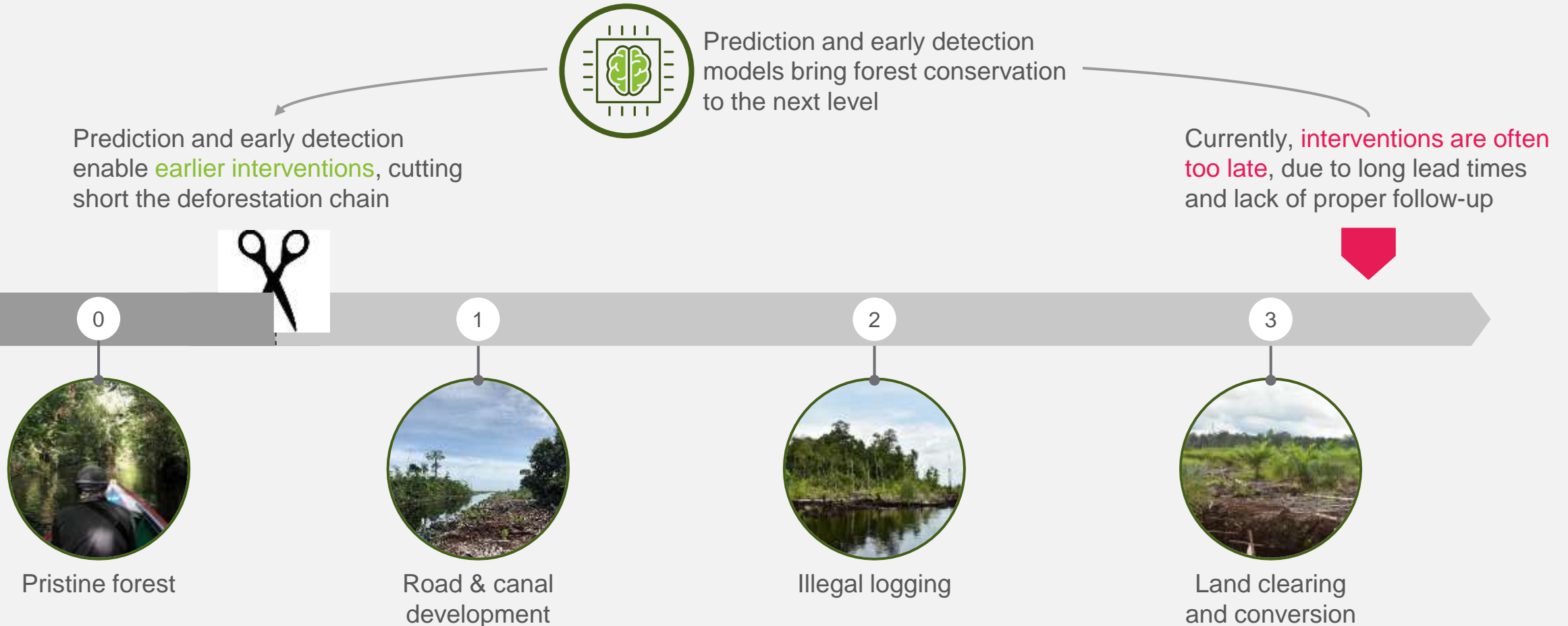
Disrupting livelihoods

Deforestation can change precipitation patterns, induce erosion and cause floods, thereby disrupting livelihoods of millions of people

Source: WWF Living forest report



Case for change: enabling earlier interventions to bring the forest conservation practice to the next level



Source: Photos were taken near the Sebangau National Park border (Central-Kalimantan)

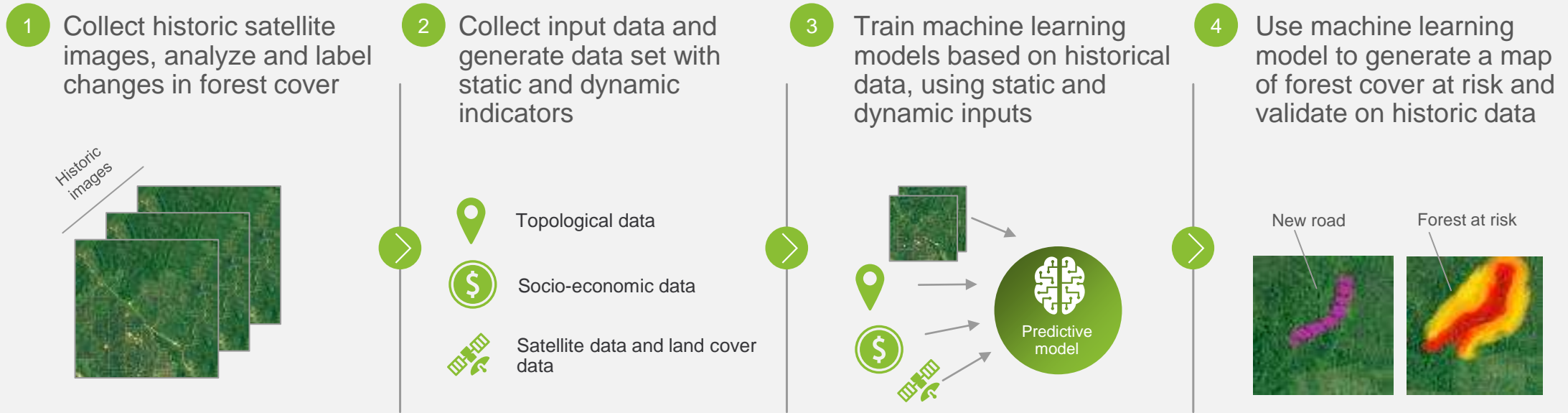
SMART SURVEYORS FOR LAND AND WATER MANAGEMENT CHALLENGES IN A NEW REALITY



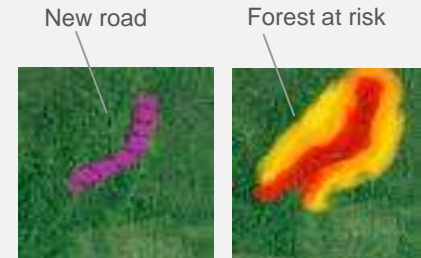
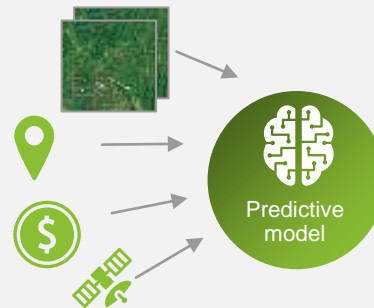
Deep dive: Strong technical foundation underlying EWS



Predict hot zones at risk



- Topological data
- Socio-economic data
- Satellite data and land cover data



Dynamic indicators

- Distance to degradation
- Distance to deforestation
- Landscape heterogeneity metrics
- ...



Static indicators

- Population density
- Distance to population center
- Distance to roads
- ...

6
months

Predict deforestation between 1-6 months in the future

80%

Achieved user's accuracy for 6-months prediction (at ~50% detection rate¹)

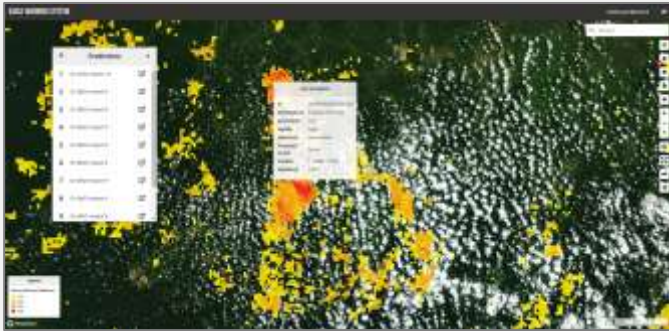


Ensemble Trees
(XGboost)

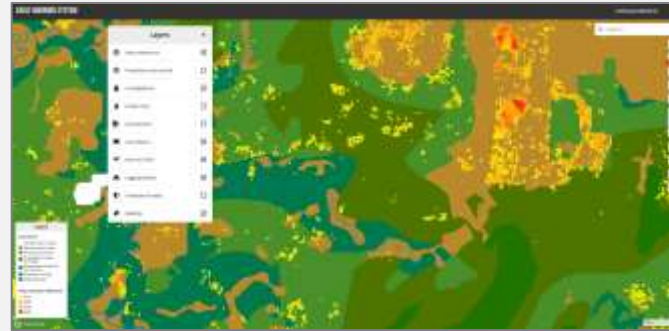
Best performer

What a typical end-to-end EWS process looks like...

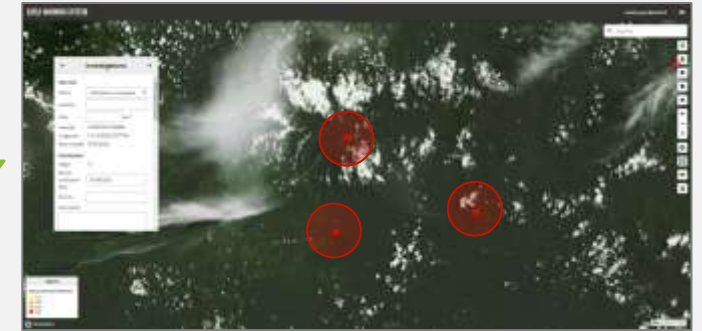
1 **EWS team** opens dashboard to review monthly predictions using filters and contextual data



2 **Area Manager** is informed of predictions and logs in to dashboard to prioritize predictions and check permits



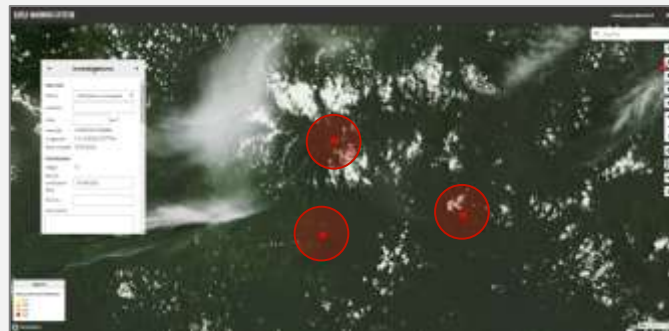
3 **Area Manager** plans field investigations that are uploaded in the intervention tracking app



6 **Area Manager** instructs to carry out intervention plan, monitors results and reports back to EWS team



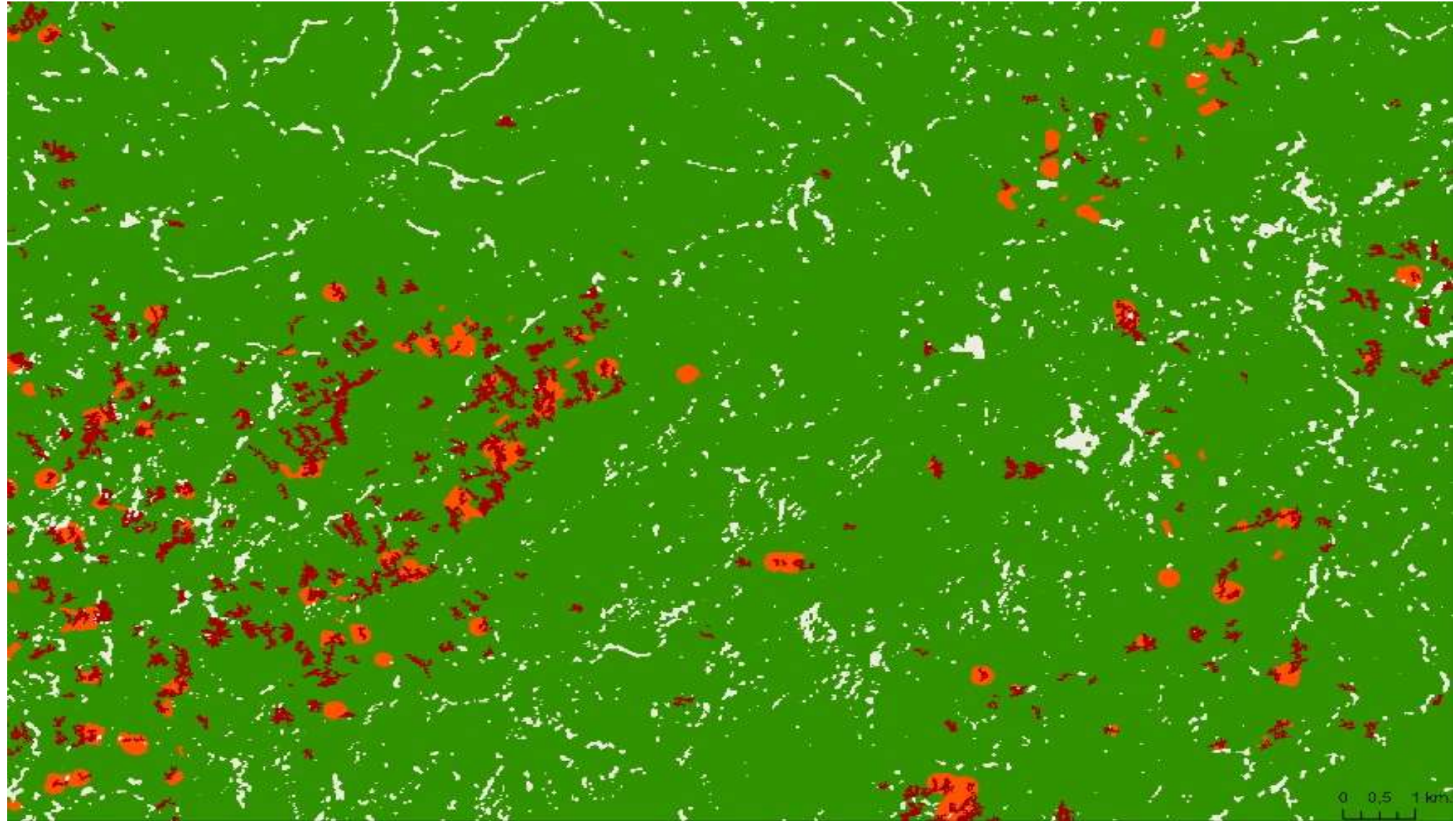
5 **Lead by the Area Manager, EWS team** reviews the investigation report and agrees intervention plan if needed



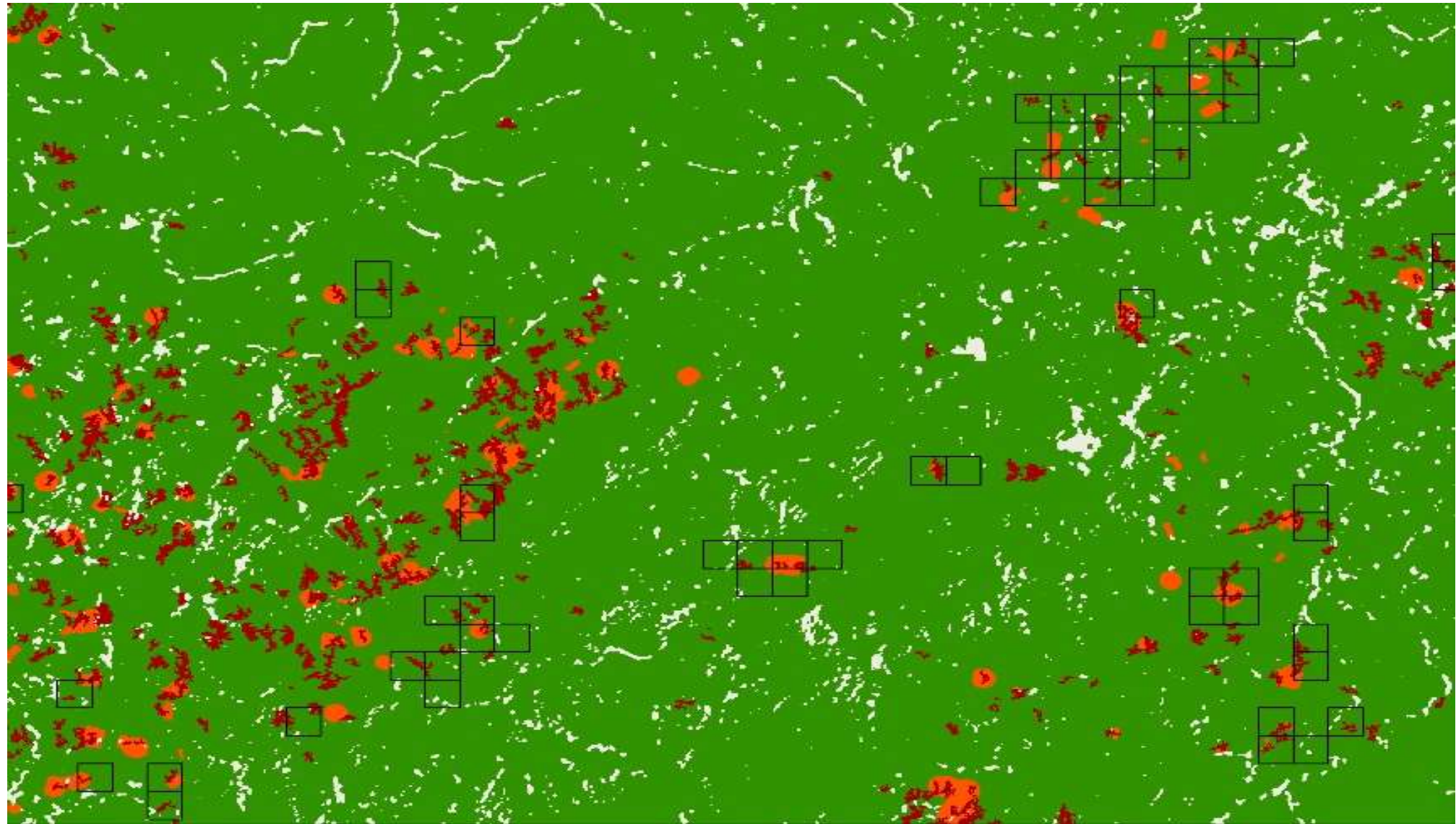
4 **Patrol team** verifies deforestation by visiting predictions in the field, taking photos & completing survey / checklist



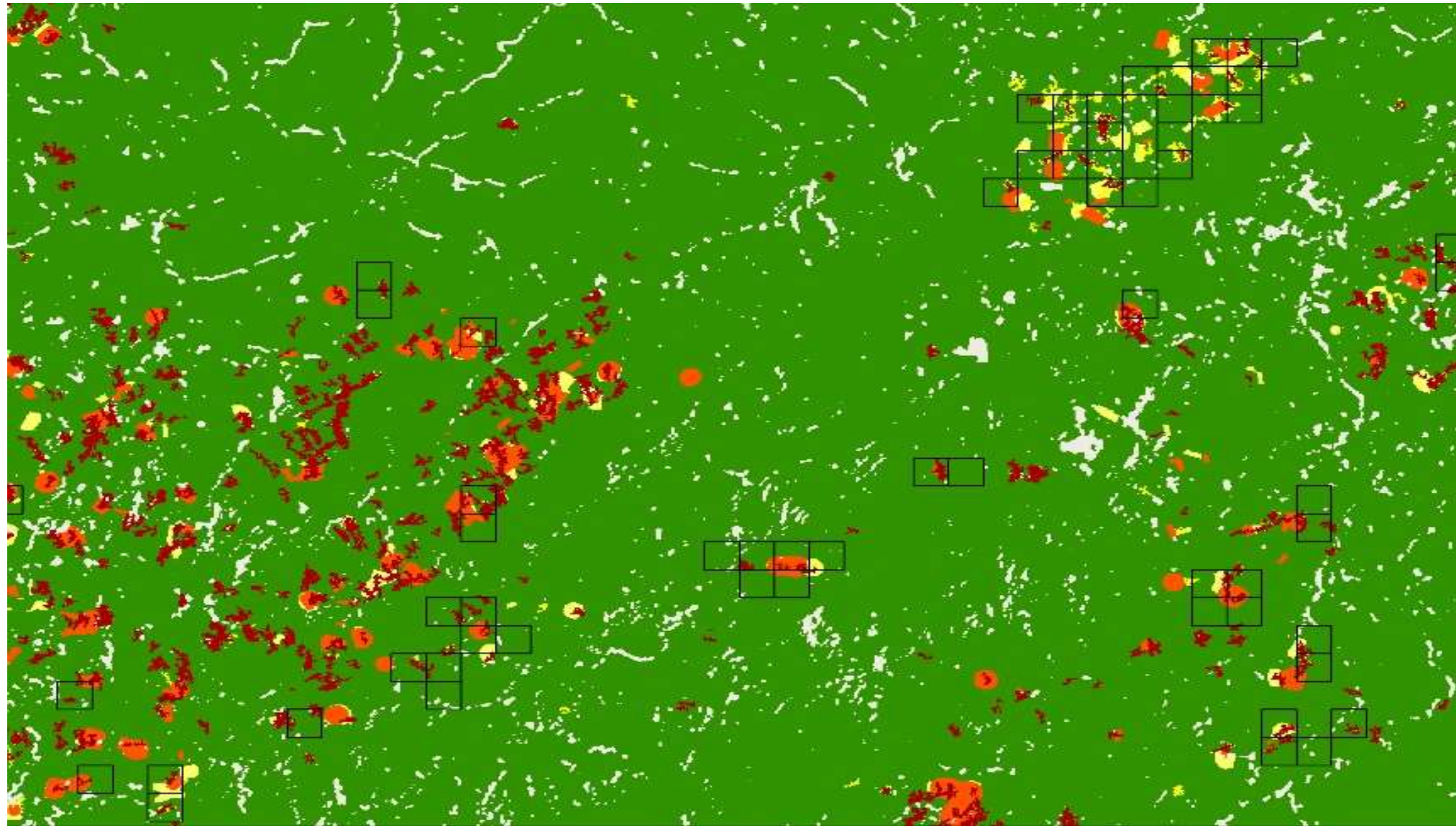
Deforestation (red) and forest degradation (orange) (2015-2020)



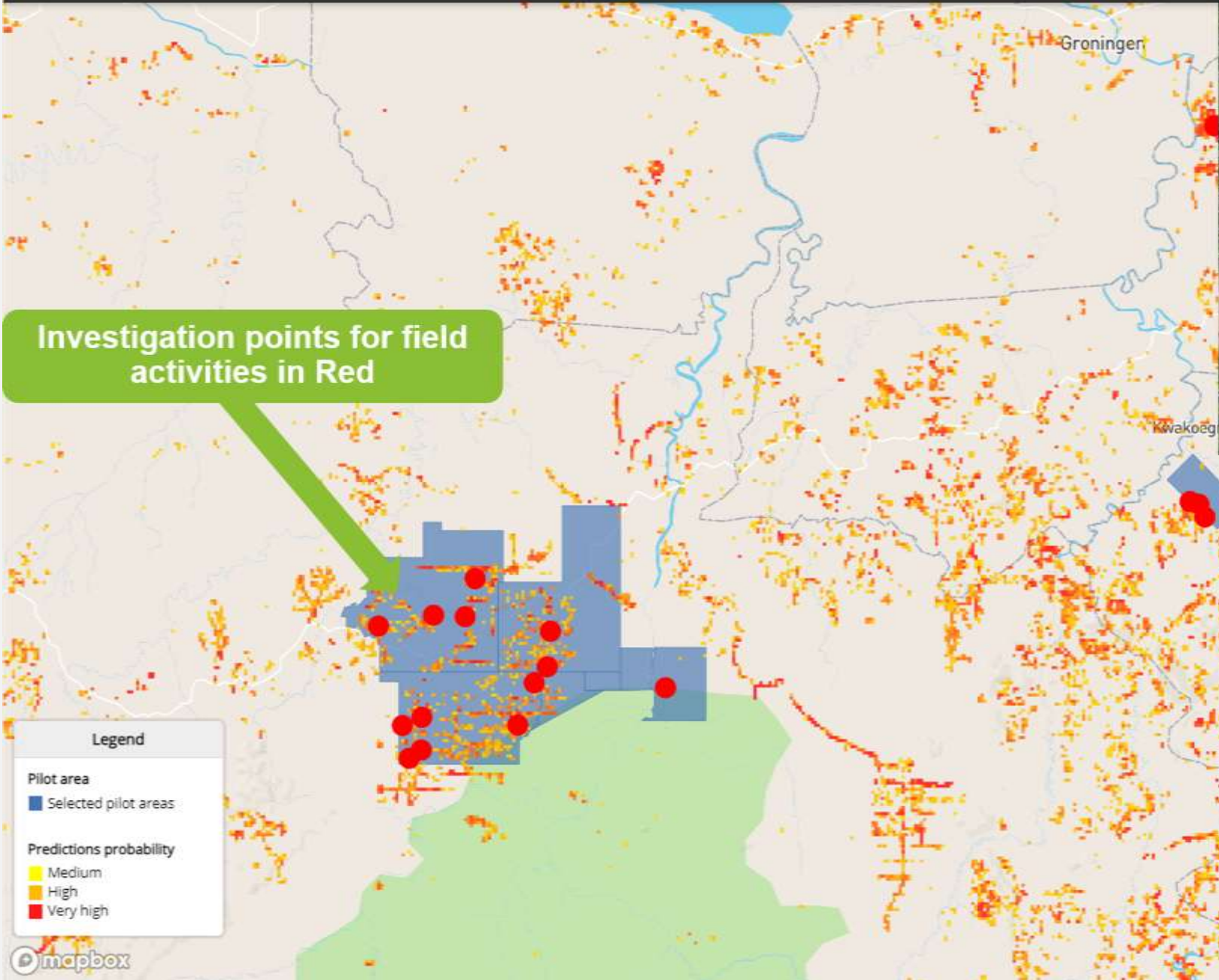
Predicting deforestation 6 months into the future (black squares)



Observed new deforestation 6 months later (yellow)



EARLY WARNING SYSTEM



User story's

Indonesia



“Predictive information helps, especially for patrols because it can allocate limited resources to areas that have the potential for change.”

Gabon



“the alerts put in evidence effective deforestation on the ground.”

Suriname



“Recent field visits to predicted deforestation locations show no signs of upcoming deforestation.. “

EWS is currently active in 5 countries with potential impact of up to 30% reduction in illegal deforestation



Legend

Current focus Future roll-out

The hectares indicate projected forest loss between 2010 and 2030



Thank you



Contact: ews@wwf.nl