



# FIG Working Week 2024

19-24 May

Accra, Ghana

Your World, Our World:  
Resilient Environment  
and Sustainable  
Resource Management  
for All

## WHAT ROLE DO HIGHER EDUCATION INSTITUTIONS (HEIs) PLAY IN LAND GOVERNANCE?

UCHENDU EUGENE CHIGBU  
NELGA SOUTHERN AFRICA

ORGANISED BY



PLATINUM SPONSORS





# FIG Working Week 2024

19-24 May

Accra, Ghana

Your World, Our World:  
Resilient Environment  
and Sustainable  
Resource Management  
for All

## CONVENTIONALLY... ASSOCIATING LAND WITH HEIs

ORGANISED BY



PLATINUM SPONSORS





# FIG Working Week 2024

19-24 May

Accra, Ghana

Your World, Our World:  
Resilient Environment  
and Sustainable  
Resource Management  
for All

## HISTORICAL FUNCTIONS OF HEIs

- HEI have legal and social contracts with the society.
- Historically, HEI performed four basic functions (Troy, 1970):
  - Creating values (**enculturation**) & social legitimation (**institutionalisation of values**)
  - Selecting the elite (**networking**)
  - Training labour force (**education**)
  - Producing new knowledge (**research**)
- HEI historical reliance on **education** and **research** emerged towards the end of the eighteenth century in Germany.
- Emergence of the new Berlin University in 1806: Incorporation of scientific innovations, vision of state vision and the role of the university in society (promoted by von Humboldt).

ORGANISED BY



PLATINUM SPONSORS



GEOSA  
General Authority for Surveying  
and Geospatial Information







# FIG Working Week 2024

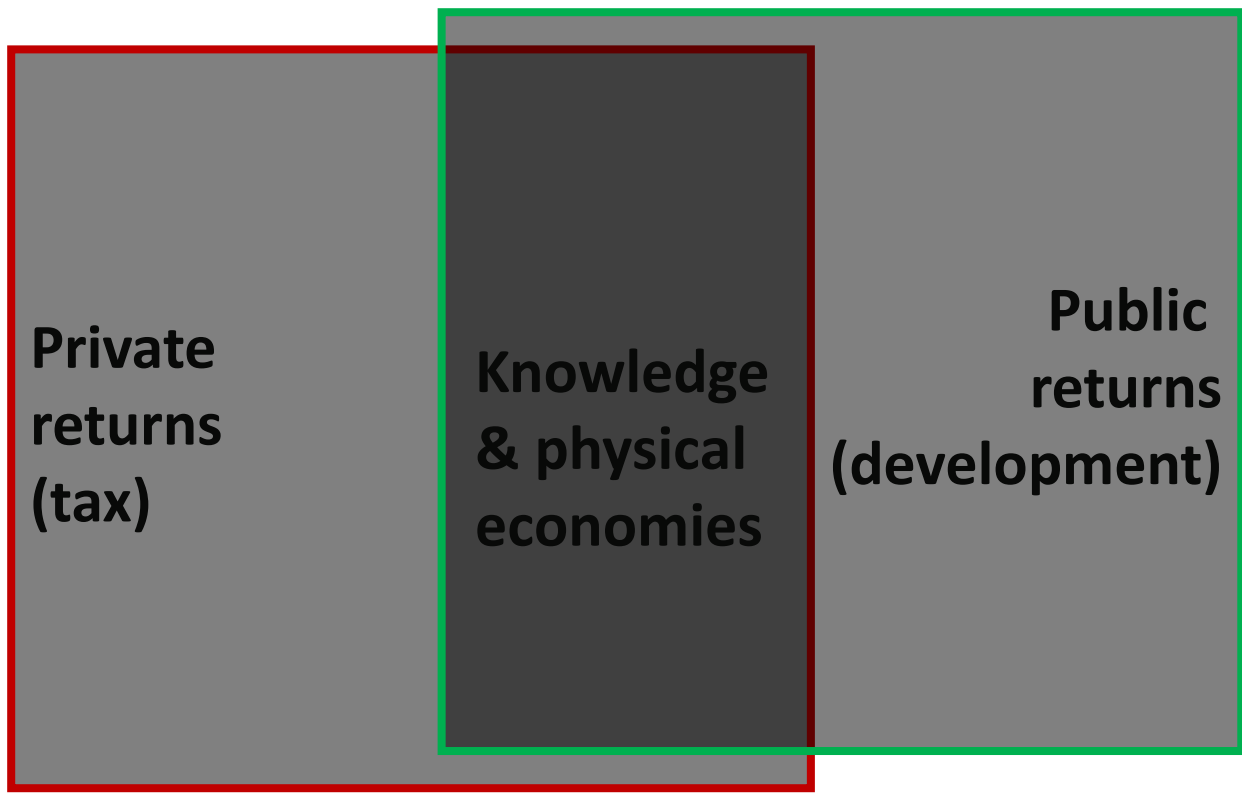
19-24 May

Accra, Ghana

Your World, Our World:  
Resilient Environment  
and Sustainable  
Resource Management  
for All

## “LAND GRANT UNIVERSITIES” HEI MODEL AND ECONOMIC RETURNS

- The USA created statutes that allowed for the universities colleges to be funded with funds sales of federally owned land.
- First established in the USA in 1862 to provide practical higher education to agricultural and industrial workers under Morrill Act of 1862 (see Dodd, 1911).
- Re-focusing on science with application





# FIG Working Week 2024

19-24 May

Accra, Ghana

Your World, Our World:  
Resilient Environment  
and Sustainable  
Resource Management  
for All

## COLONIALY... ASSOCIATING CONVENTIONAL HEIs WITH AFRICA

ORGANISED BY



PLATINUM SPONSORS





# FIG Working Week 2024

19-24 May

Accra, Ghana

Your World, Our World:  
Resilient Environment  
and Sustainable  
Resource Management  
for All

## ROLE OF HEIs IN (POST)COLONIAL AFRICA

### Colonial

- Recruitment of social elites (Castells, 2001)
  - First and foremost, for the colonial administration
  - Then for the new political regimes

### Post-colonial

- **Higher education in Africa, still an elite system**
  - Fully accessible (**massified**) versus too many elites (**elite crowding**)
- Earlier, land only linked to HEI (professionally)
- **Finally, land finally linked to HEI (societally)**

ORGANISED BY



PLATINUM SPONSORS





# FIG Working Week 2024

19-24 May

Accra, Ghana

Your World, Our World:  
Resilient Environment  
and Sustainable  
Resource Management  
for All

## CONCEPTUALLY & OPERATIONALLY... PLATFORMS FOR UNDERSTANDING THE ROLES OF HEI IN LAND GOVERNANCE

ORGANISED BY



PLATINUM SPONSORS







# FIG Working Week 2024

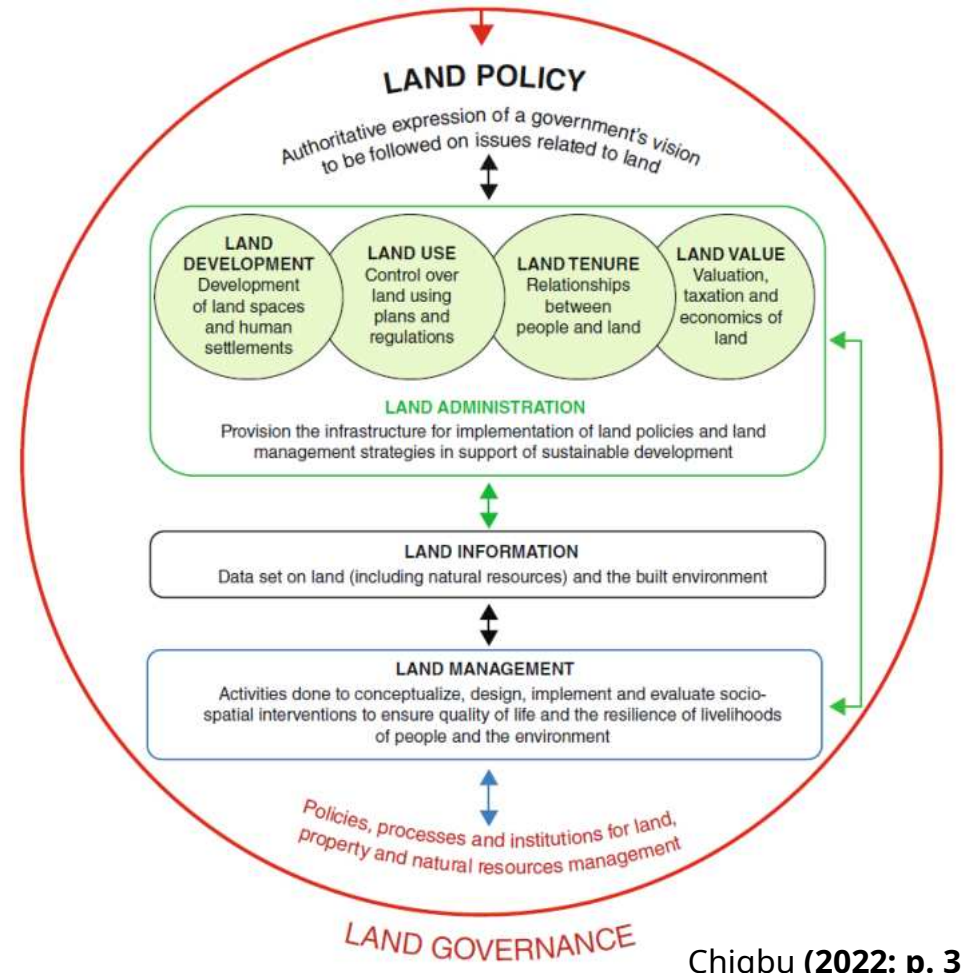
19-24 May

Accra, Ghana

Your World, Our World:  
Resilient Environment  
and Sustainable  
Resource Management  
for All

## UNDERSTANDING LAND GOVERNANCE

- Land governance concerns the rules, processes and structures through which decisions are made about access to land and its use, the manner in which the decisions are implemented and enforced, and the way that competing interests in land are managed” (FAO/UN-Habitat, 2009).



Chigbu (2022: p. 3)





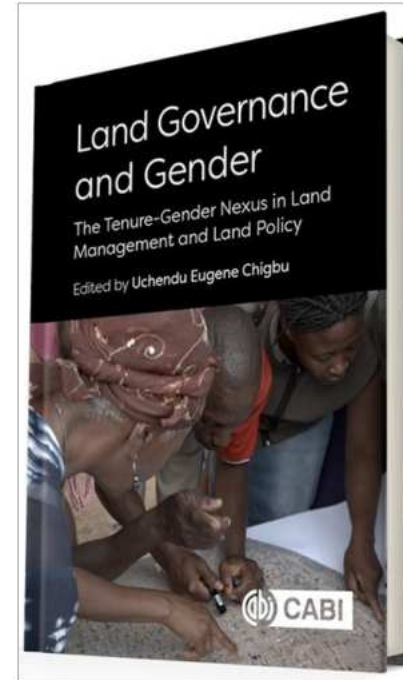
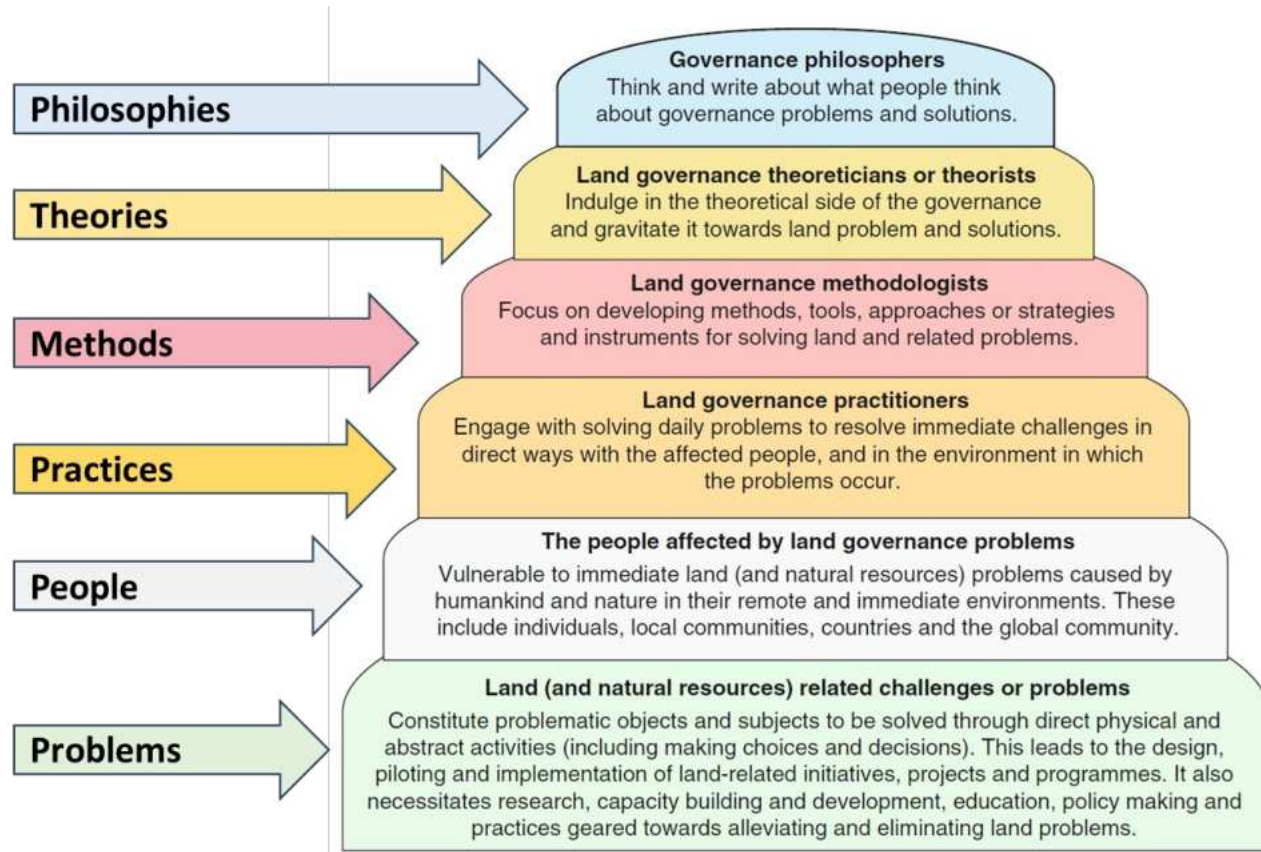
# FIG Working Week 2024

19-24 May

Accra, Ghana

Your World, Our World:  
Resilient Environment  
and Sustainable  
Resource Management  
for All

## KNOWLEDGE FLOW AND AGENCY/AGENTS OF LAND GOVERNANCE



Chigbu (2022, p. 236)

ORGANISED BY



PLATINUM SPONSORS





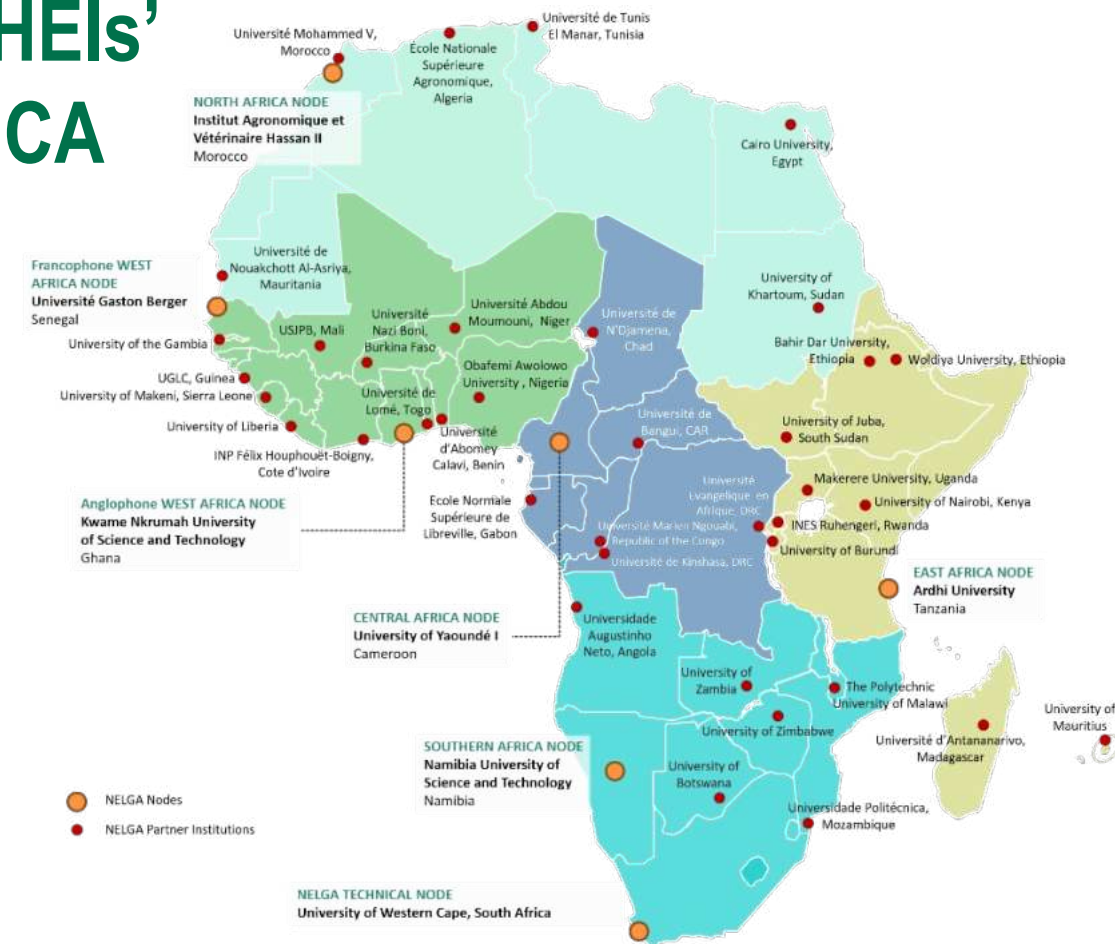
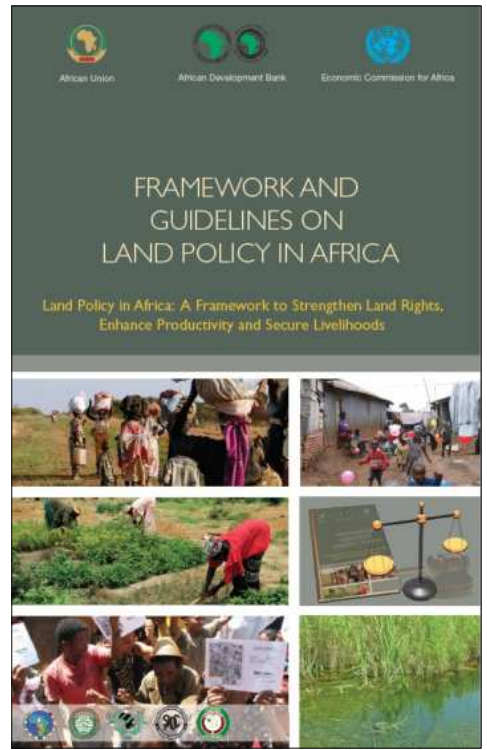
# FIG Working Week 2024

19-24 May

Accra, Ghana

Your World, Our World:  
Resilient Environment  
and Sustainable  
Resource Management  
for All

## GUIDELINES AND NELGA: PLATFORMS HEIs' ROLES ON LAND GOVERNANCE IN AFRICA







# FIG Working Week 2024

19-24 May

Accra, Ghana

Your World, Our World:  
Resilient Environment  
and Sustainable  
Resource Management  
for All

**REALISTICALLY...**

## **ROLE OF HEIs (NELGA) IN LAND GOVERNANCE IN AFRICA**

ORGANISED BY



PLATINUM SPONSORS







# FIG Working Week 2024

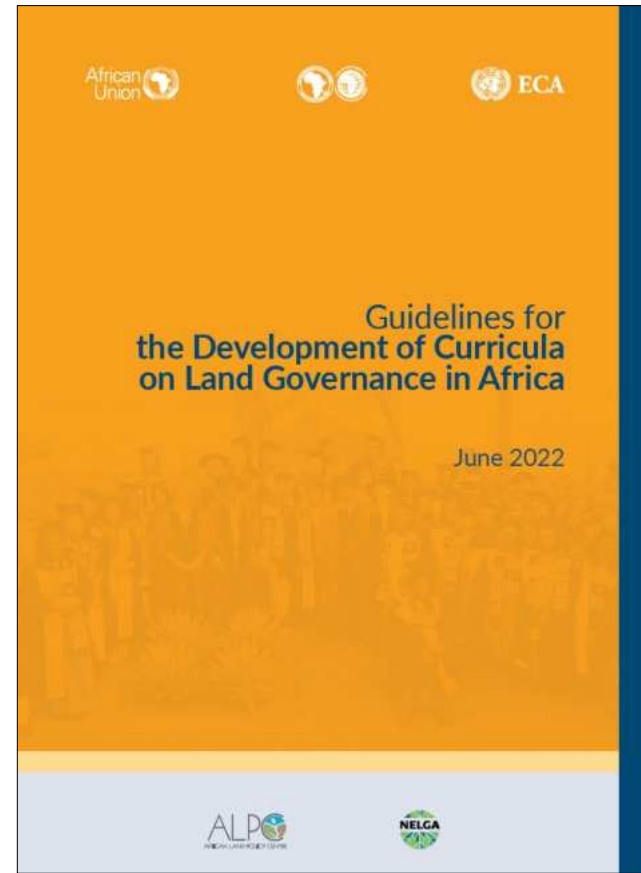
19-24 May

Accra, Ghana

Your World, Our World:  
Resilient Environment  
and Sustainable  
Resource Management  
for All

## EDUCATION

- Programme development academic programmes (in land administration, geodesy, land governance, etc)
- Teaching in land governance: within and across land related disciplines governance.
- Curricula development support across the continent (see ALPC/NELGA curricula development guidelines)
- Continental benchmarking





# FIG Working Week 2024

19-24 May

Accra, Ghana

Your World, Our World:  
Resilient Environment  
and Sustainable  
Resource Management  
for All

## RESEARCH

- Research agenda development
- Conducting Research
- Research publication & dissemination (books, newsletters, journals, commissioned books/reports, newspaper articles, policy briefs, blogs, etc)
- Peer-evaluation
- Research supervisions (projects, BSc, MSc, PhD & post-doc)



**AJLP & GS**  
African Journal on Land Policy and Geospatial Sciences



**RESPONSIBLE AND SMART LAND MANAGEMENT INTERVENTIONS**  
An African Context



edited by  
Walter Timo de Vries  
John Tiah Bugri  
Fatima Mandhu





Research and Capacity Development Strategy for Land Governance Innovation in Southern Africa





**JOURNAL OF Planning & Land Management**



Land Use Policy  
Supports open access

11.8  
CiteScore

7.1  
Impact Factor





# FIG Working Week 2024

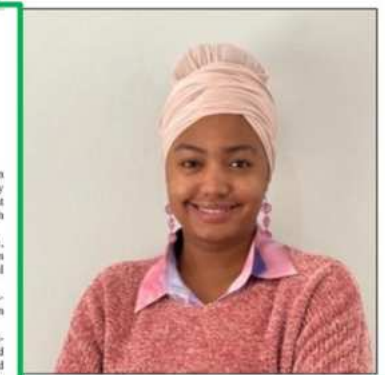
19-24 May

Accra, Ghana

Your World, Our World:  
Resilient Environment  
and Sustainable  
Resource Management  
for All

## ENCULTURATION AND INSTITUTIONALISATION OF LAN SECTOR VALUES

- **Citizens' education:** land use, gender, women's land rights, land rights activism (activism against land corruption, gender inequality, etc.), land reform, climate change, land restoration, to mention a few.
- **Policy influence:** science-policy dialogues, land policy formulation and advisory, among many others.



ORGANISED BY



THE SCIENCE OF WHERE®







# FIG Working Week 2024

19-24 May

Accra, Ghana

Your World, Our World:  
Resilient Environment  
and Sustainable  
Resource Management  
for All

## NETWORKING

- Network engagements across and beyond Africa with intent to share knowledge, and experience, and collaborate and learn on various aspects of land matters.
- Inter-university collaborations within and across regions.
- Professional community engagements (workshops, symposia, conferences, expert group meetings & colloquia, etc).





# FIG Working Week 2024

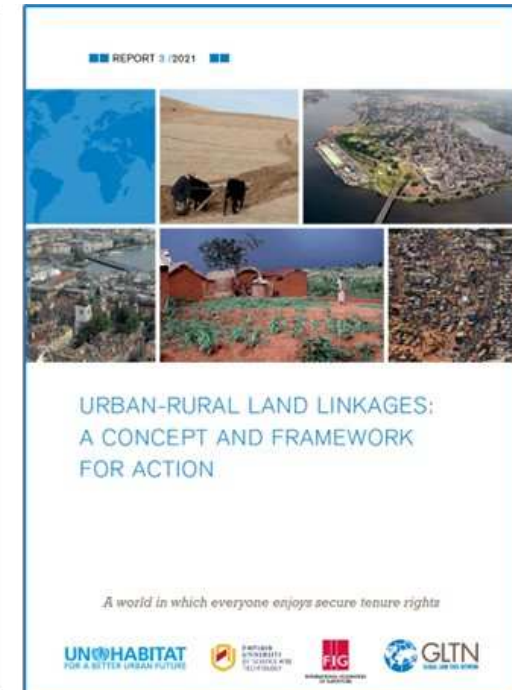
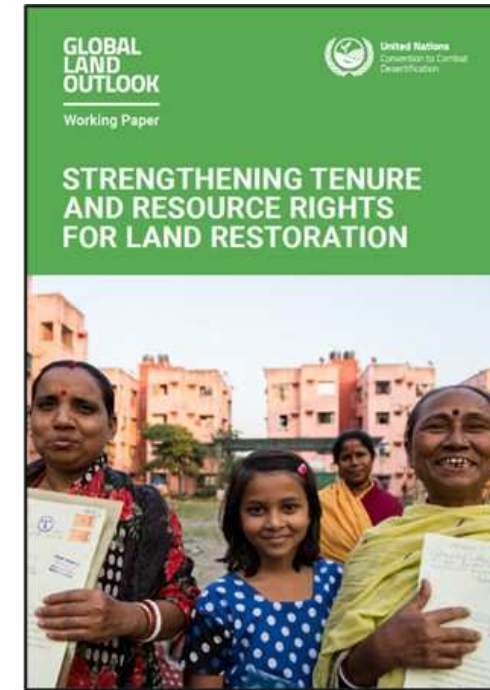
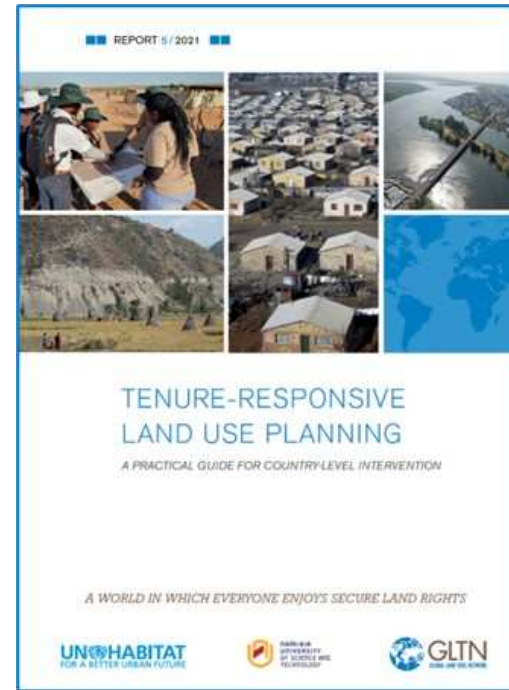
19-24 May

Accra, Ghana

Your World, Our World:  
Resilient Environment  
and Sustainable  
Resource Management  
for All

## FUNDING, PROJECT CO-IMPLEMENTATION COMMUNITY ENGAGEMENT AND POLICY INFLUENCE

- Funding
- Project implementation
- Local community land policy and activity engagements (workshops, symposia, conferences, expert group meetings & colloquia, etc)



ORGANISED BY



PLATINUM SPONSORS







# FIG Working Week 2024

19-24 May

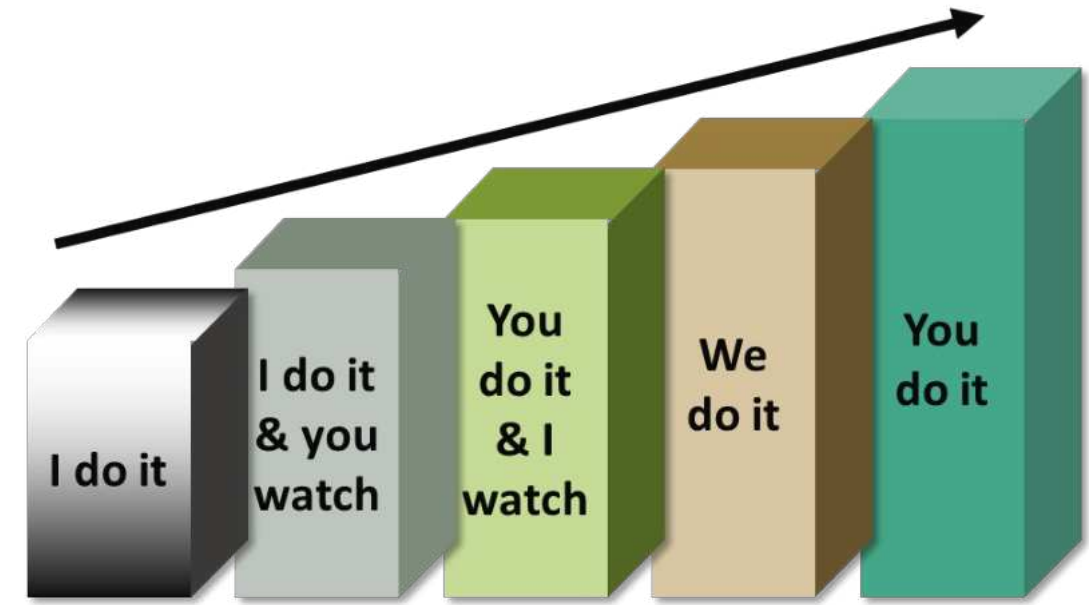
Accra, Ghana

Your World, Our World:  
Resilient Environment  
and Sustainable  
Resource Management  
for All

## MENTORING (HELPING THE YOUNGER ONES GROW)

Teaching them academic and society-related values (**enculturation**).

- Connecting with others on land matters for collaborative engagements (**networking**).
- Making school-based and out-of-school skills training and learning available Training labour force (**education**).
- Co-producing new knowledge and implementing projects (**research**).
- Creating individual lifetime learning cycles, friends and collaborators.



Operation of working/research/study groups





# FIG Working Week 2024

19-24 May

Accra, Ghana

Your World, Our World:  
Resilient Environment  
and Sustainable  
Resource Management  
for All

**FINALLY...**

## **ROLE OF HEI IN LAND GOVERNANCE IN AFRICA**

ORGANISED BY



PLATINUM SPONSORS





# FIG Working Week 2024

19-24 May

Accra, Ghana

Your World, Our World:  
Resilient Environment  
and Sustainable  
Resource Management  
for All

## CONCLUSION

- The landscape of HEIs roles in land governance in Africa has changed in the past ten years from:
  - **Individual to group networking.**
  - **Professional landscape to a societal-development path.**
- The big questions are:
  - **To what extent can it be sustained?**
  - **What directions can it evolve?**





# FIG Working Week 2024

19-24 May

Accra, Ghana

Your World, Our World:  
Resilient Environment  
and Sustainable  
Resource Management  
for All

## REFERENCES

1. Castells, M. (2001). Universities as Dynamic Systems of Contradictory Functions. In Muller, J., Cloete, N. & Badat, S. (eds.), *Challenges of Globalisation: South African Debates with Manuel Castells*, pp. 206–23. Maskew Miller Longman: Cape Town.  
[www.semanticscholar.org/paper/Universities-as-dynamic-systems-of-contradictory-Castells/9e5103a84069a44696781d48dead3bb05bbbed69d](http://www.semanticscholar.org/paper/Universities-as-dynamic-systems-of-contradictory-Castells/9e5103a84069a44696781d48dead3bb05bbbed69d)
2. Dodd, W.E. (1911). The Origin of the Land Grant Act of 1862 and Some Account of Its Author, Jonathan B. Turner by Edmund J. James. *American Journal of Sociology*, 17(3), 406-407.  
<https://www.journals.uchicago.edu/doi/10.1086/211983>
3. Trow, M. (1979). Reflections on the transition from mass to universal higher education. *Daedalus*, 99(1), 1-42. <https://www.jstor.org/stable/20023931>