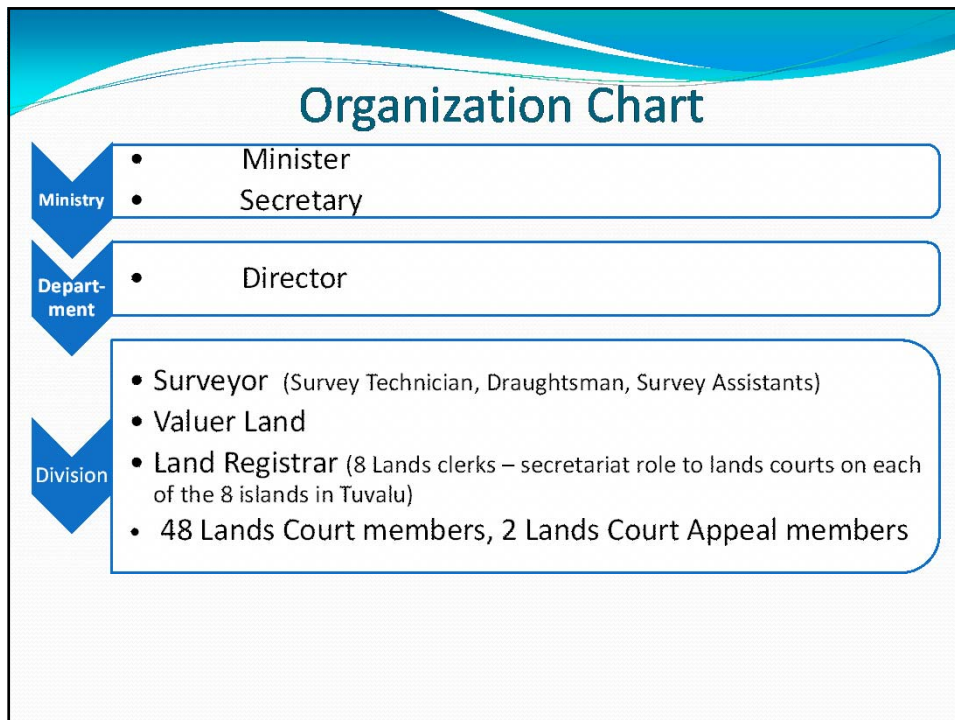


Capacity building needs and the roles of land professionals in Tuvalu

Faatasi Malologa
Director of Lands & Survey

Presentation Outline

- Organization Chart
- Capacity building & human resource development
- Roles of land professionals
- Conclusion & Recommendation



Capacity building & human resource development

- 9 land professional positions (director, land valuer, land registrar, surveyor, survey technician, draughtsman X2, survey assistants X2)
- 3 vacant positions (surveyor, survey technician, draughtsman)
 - earmarked for staff on training
- 58 non professional positions – Lands Clerks, 8 lands clerks, 48 lands court members, 2 lands appeal members
- Training; degree graduate in surveying & mapping, degree graduate in management & industrial relations, diploma in landuse planning
- Senior staff (land valuer) with degree in land management resigned and moved to PWD – IWRM
- staff pursuing diploma in geomatics, followed by other non- qualified staff in future

Cont..

- Issue; lack of qualified professional
- No national professional body
- No survey regulations and land management standards
- Limited training for non-professional positions

Roles of land professionals

- provide accurate, complete, current and easily accessible information on land to public and government
- non- existent of land valuation due to land tenure setup, limited market opportunities
- Director – management and policy
- Land registration and lands courts activities; titles, wills, new leases, boundary demarcation, adoption, etc
- Survey activities; control survey, topo, boundary demarcation, maritime boundary (baseline, 12 & 24 nm, median lines and EEZ), extended continental shelf work, GIS & RS

Conclusion & Recommendation

- Limited qualified land professional
- Absence of land professional body
- Absence of land professional regulations and standards
- Need to amend Native Lands Act Cap22 to better portray professional roles of surveyors and other land professionals
- All staff and new recruits to professional positions need relevant training/qualification
- Accreditation of staff from neighboring countries in region after training, and arrangement for field work experience and attachment
- Need support of FIG and donor agencies to setup regulations and standards for land professionals

Thank You