

FIG

FIG WORKING WEEK 2017

Helsinki Finland

29 May - 2 June 2017

Presented at the FIG Working Week 2017,
May 29 - June 2, 2017 in Helsinki, Finland

Modelling the Coupled Effects of Climate Change and Management Approaches on Plantations in Southern China

Presenter: **Xiaofan WANG**

China Land Surveying and Planning Institute

Surveying the world of tomorrow -
From digitalisation to augmented reality

Organised by



Platinum Sponsors:





FIG WORKING WEEK 2017

Surveying the world of tomorrow -

Helsinki Finland 29 May - 2 June 2017

From digitalisation to augmented reality

Outline

- WHY DO WE DO THIS STUDY?
- WHAT DO WE WANT TO FIGURE OUT?
- HOW TO GET THERE?
- QUESTIONS FOR FUTUER STUDY...



Platinum Sponsors:





FIG WORKING WEEK 2017

Surveying the world of tomorrow -

Helsinki Finland 29 May - 2 June 2017

From digitalisation to augmented reality

Background

Global Climate Change

- exchanges of energy, water, carbon dioxide and other chemical species within the atmosphere



- Forest composition
- Spatial distribution
- Forest biomass
- Carbon storage
- Abundance of tree species

Forest Ecosystems



FIG WORKING WEEK 2017

Surveying the world of tomorrow -

Helsinki Finland 29 May - 2 June 2017

From digitalisation to augmented reality

Background

Land use management policy



Forest management

- maintain carbon storage
- improve the capacity to adapt to climate change

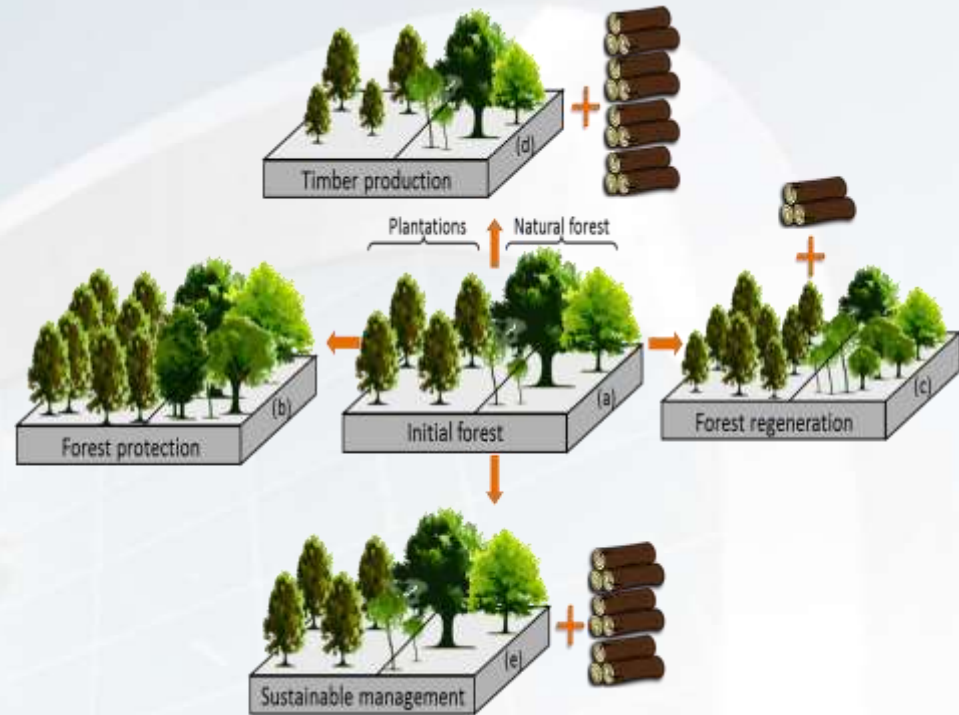




FIG WORKING WEEK 2017

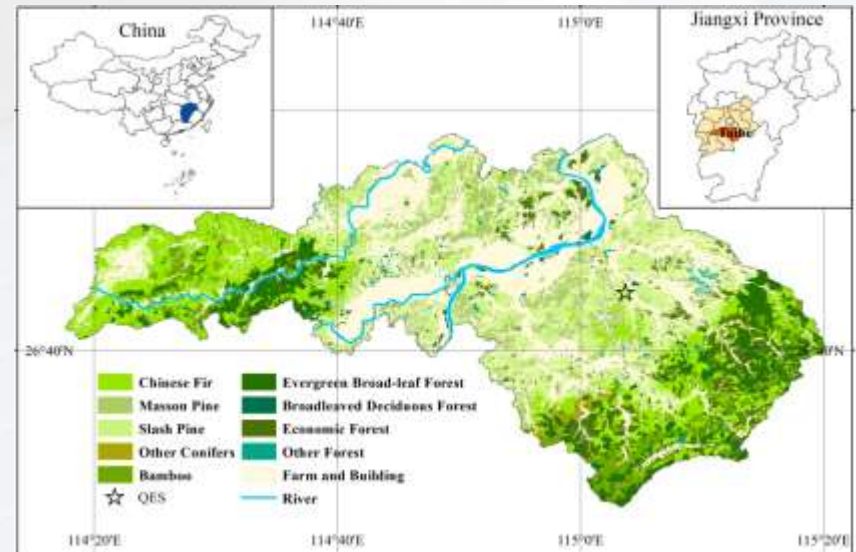
Surveying the world of tomorrow -

Helsinki Finland 29 May - 2 June 2017

From digitalisation to augmented reality

Plantations in China

- 62 million ha plantations in China (2011)
- extensive management
- low productivity
- single structured
- unsustainable ecological and production functions



Platinum Sponsors:





FIG WORKING WEEK 2017

Surveying the world of tomorrow -

Helsinki Finland 29 May - 2 June 2017

From digitalisation to augmented reality

Objectives

- Investigate the landscape scale effects of forest management and climate change on the plantations in Southern China.
- Understand the trade-offs between forest biomass and timber production.
- Compare simulations incorporating four climate scenarios and four forest management alternatives.



Platinum Sponsors:





FIG WORKING WEEK 2017

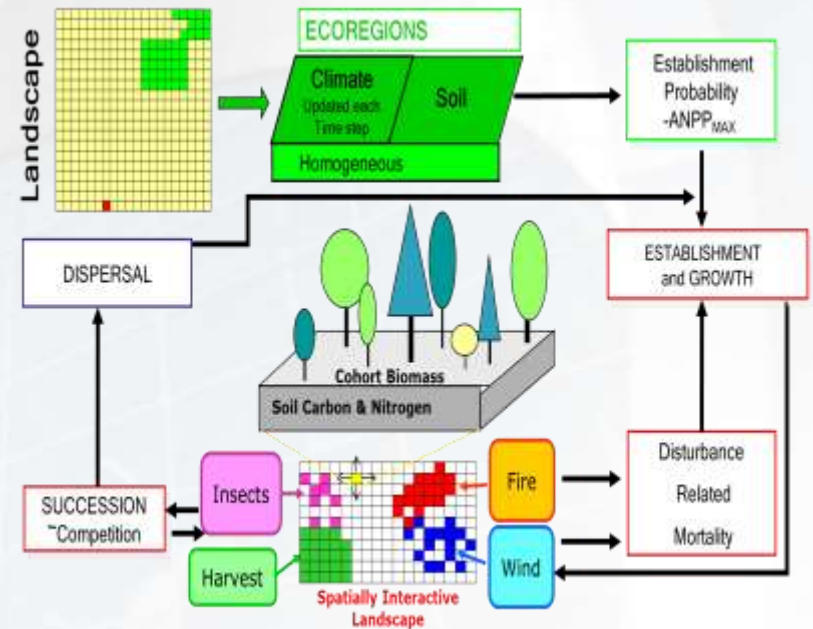
Surveying the world of tomorrow -

Helsinki Finland 29 May - 2 June 2017

From digitalisation to augmented reality

Model : LANDIS-II

- LANDIS-II simulates dynamics in forest landscape structure, succession process and AGB of each tree species under disturbances (fire, wind, insects and harvest).
- **First designed by University of Wisconsin-Madison**



Platinum Sponsors:





FIG WORKING WEEK 2017

Surveying the world of tomorrow -

Helsinki Finland 29 May - 2 June 2017

From digitalisation to augmented reality

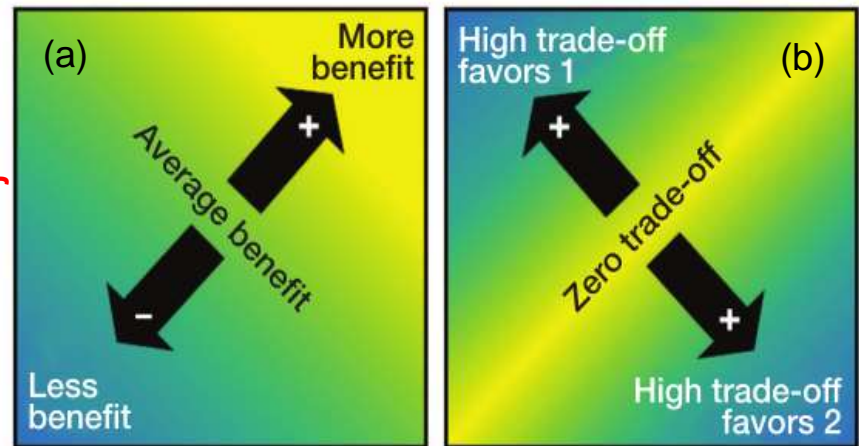
Quantifying trade-offs

- The magnitude of benefit for objective A:

$$B_A = \frac{A_{OBS} - A_{Mn}}{A_{Max} - A_{Mn}}$$

- Overall benefit for the two objectives: the mean of individual benefits
- Trade-offs: the root mean squared error (RMSE) of the individual benefits

Benefit for Objective B



Benefit for Objective A



Platinum Sponsors:





FIG WORKING WEEK 2017

Surveying the world of tomorrow -

Helsinki Finland 29 May - 2 June 2017

From digitalisation to augmented reality

Results & Discussions

- The scatter plot depicts the relationship between timber production and AGB for a long-term forest management and climate experiment.
- Overall benefit increases from low benefit in the lower left to greater benefit in the upper right.
- Trade-off increases with distance from the diagonal of $x=y$.

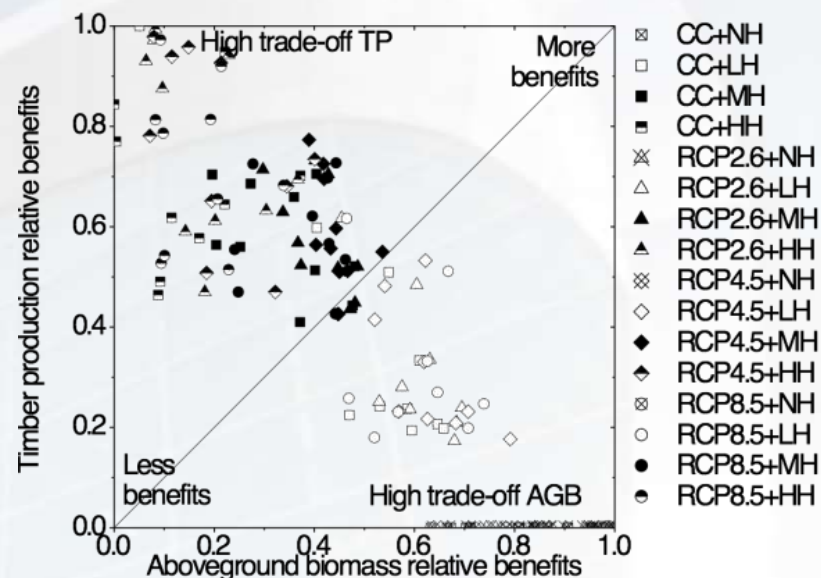




FIG WORKING WEEK 2017

Surveying the world of tomorrow -

Helsinki Finland 29 May - 2 June 2017

From digitalisation to augmented reality

Results & Discussions

- Uncertainties of climate change, ...
- Model limitations, ...

Future study:

- Optimize forest management approaches
- Trade-offs between economic benefits and ecological benefits
- Combine with remote sensing technology
- Consider the impacts of land policy



Platinum Sponsors:





FIG WORKING WEEK 2017

Surveying the world of tomorrow -

Helsinki Finland 29 May - 2 June 2017

From digitalisation to augmented reality

THANK YOU FOR LISTENING!

E-mail: wangxiaofan@mails.clspi.org.cn



Platinum Sponsors:

