

FIG

FIG WORKING WEEK 2017

Helsinki Finland

29 May - 2 June 2017

*Presented at the FIG Working Week 2017,
May 29 - June 2, 2017 in Helsinki, Finland*

Integrated Rural Development as a Tool to Strengthen Rural Areas - The Case Study of Sanbaishan Municipality in PR China (9069)

Surveying the world of tomorrow -
From digitalisation to augmented reality

Organised by



Platinum Sponsors:



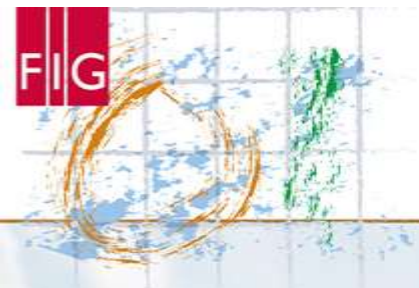


FIG WORKING WEEK 2017

Surveying the world of tomorrow -

Helsinki Finland 29 May - 2 June 2017

From digitalisation to augmented reality

Integrated Rural Development as a Tool to Strengthen Rural Areas - The Case Study of Sanbaishan Municipality in PR China (9069)

Dr.-Ing. Michael Klaus

Hanns Seidel Foundation

Chair of Land Management Technical University Munich

Helsinki, May 31st, 2017



Platinum Sponsors:



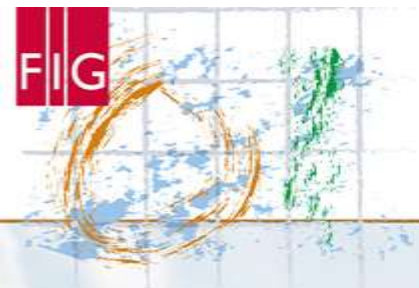


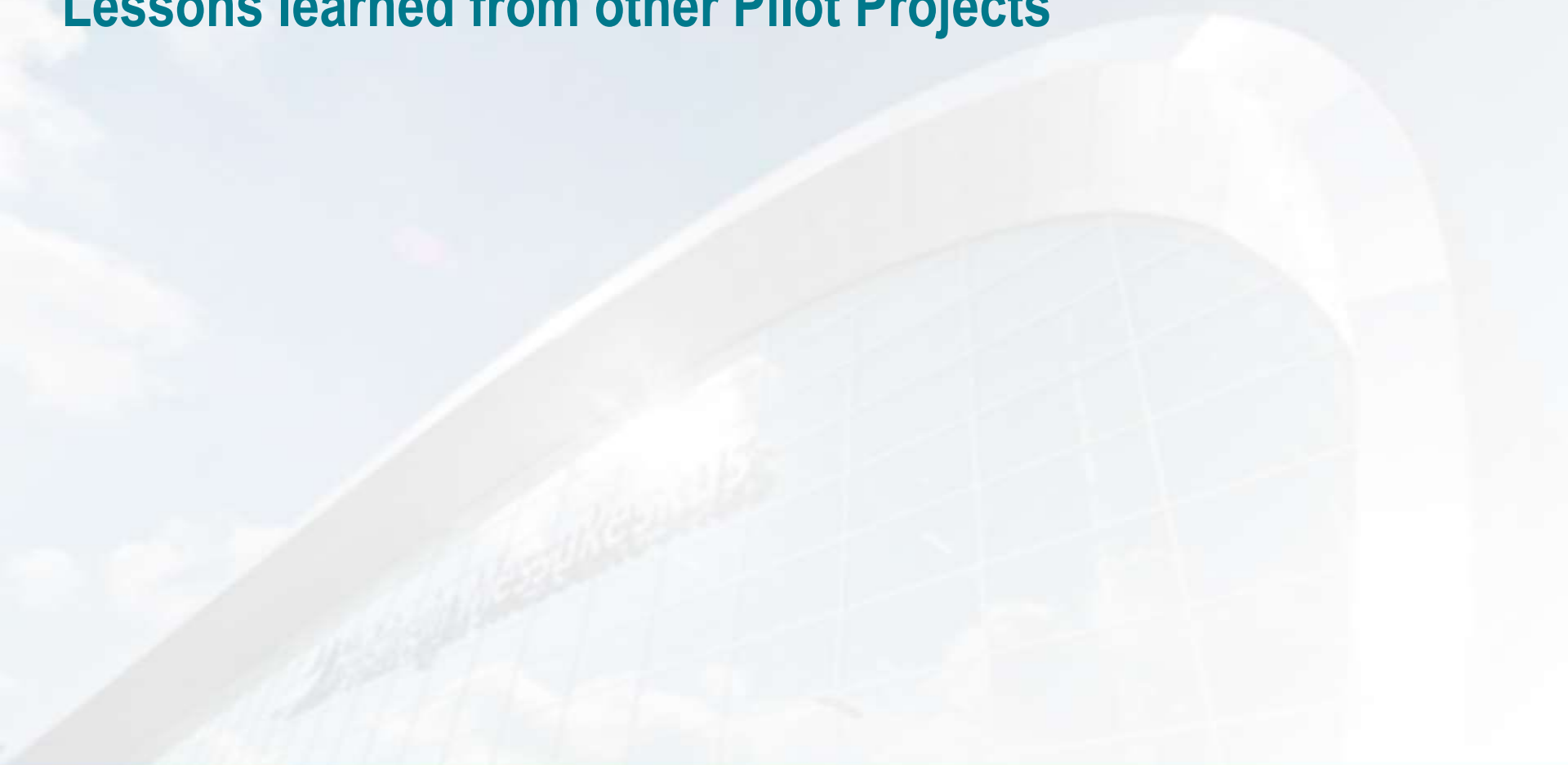
FIG WORKING WEEK 2017

Surveying the world of tomorrow -

Helsinki Finland 29 May - 2 June 2017

From digitalisation to augmented reality

Lessons learned from other Pilot Projects



Platinum Sponsors:



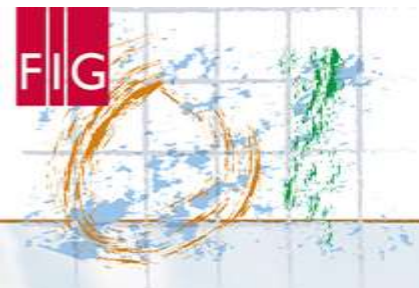


FIG WORKING WEEK 2017

Surveying the world of tomorrow -

Helsinki Finland 29 May - 2 June 2017

From digitalisation to augmented reality

Description of the Project

Pilot Project on

- Village Renewal – activating people to participate
- Re-arrangement of land tenure (Use Rights on Parcels)
- Landscape planning
- Balancing impact of the project on environment by embedding different authorities

Dr.-Ing. Michael Klaus | Chair of Landmanagement TUM | Hanns-Seidel-Foundation



Platinum Sponsors:



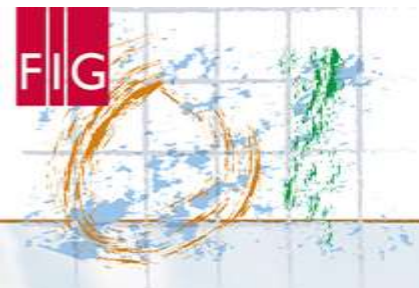


FIG WORKING WEEK 2017

Surveying the world of tomorrow -

Helsinki Finland 29 May - 2 June 2017

From digitalisation to augmented reality

How to Gain Added Value?

Extended Aim

- Input for institutions

But main questions remains

- How to select relevant Institutions?
- How to receive an institutional backup of the work?

Dr.-Ing. Michael Klaus | Chair of Landmanagement TUM | Hanns-Seidel-Foundation



Platinum Sponsors:



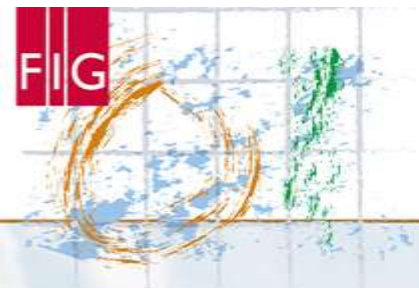


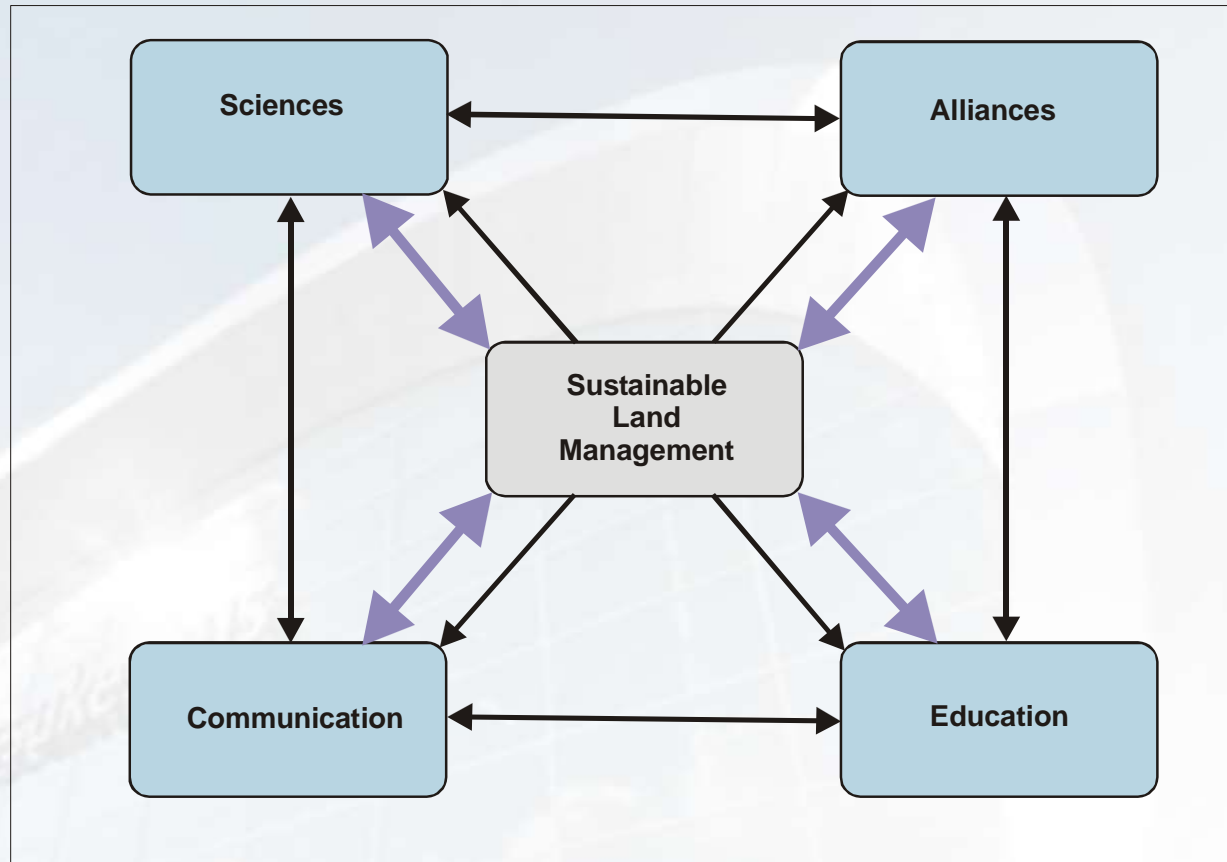
FIG WORKING WEEK 2017

Surveying the world of tomorrow -

Helsinki Finland 29 May - 2 June 2017

From digitalisation to augmented reality

Conceptual Framework



Source: Klaus 2005: Sustainable Land Management – A New Approach for Implementation

Dr.-Ing. Michael Klaus | Chair of Landmanagement TUM | Hanns-Seidel-Foundation



Platinum Sponsors:



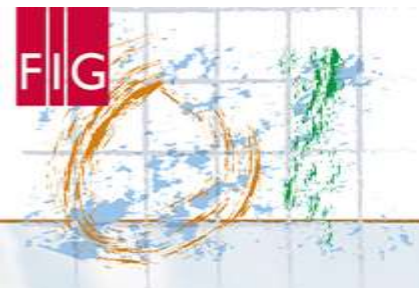


FIG WORKING WEEK 2017

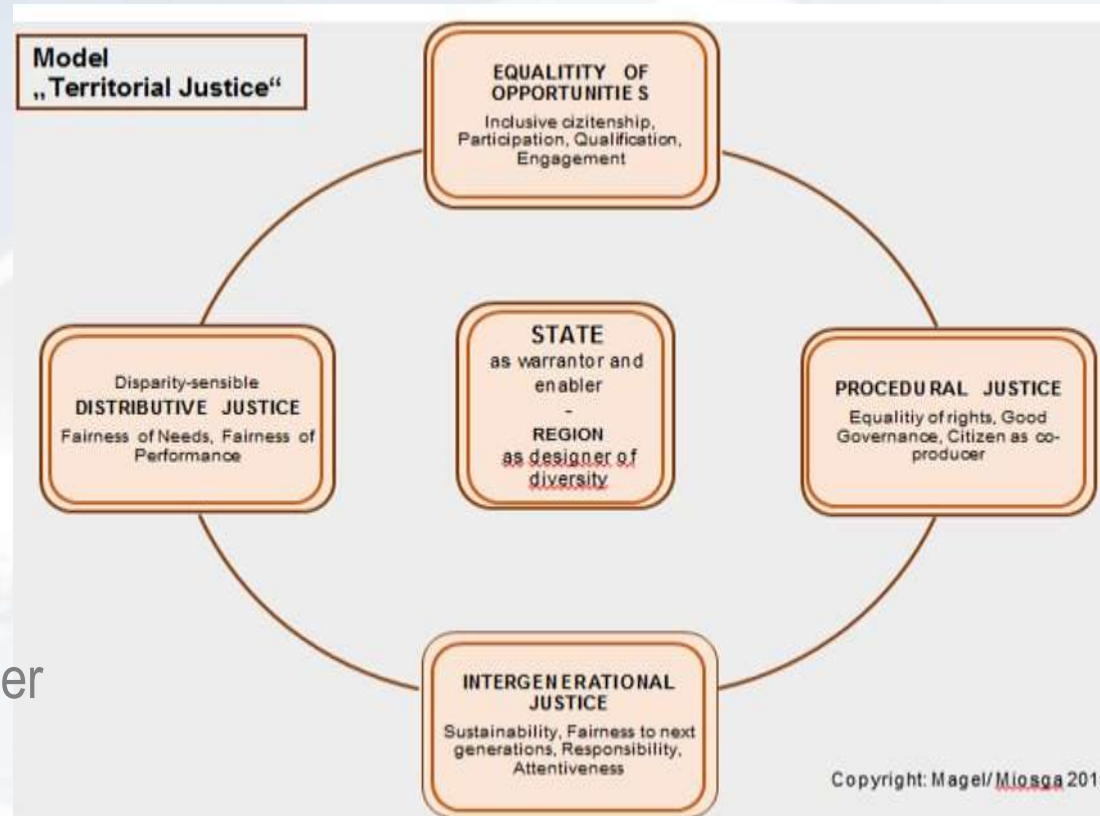
Surveying the world of tomorrow -

Helsinki Finland 29 May - 2 June 2017

From digitalisation to augmented reality

Territorial Justice as Base for Action

- Equality of Opportunities
- Distributive Justice
- Procedural Justice
- Intergenerational Justice
- State as Guarantor and Enabler



Dr.-Ing. Michael Klaus | Chair of Landmanagement TUM | Hanns-Seidel-Foundation



Platinum Sponsors:



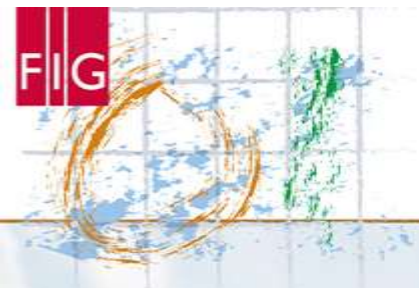


FIG WORKING WEEK 2017

Surveying the world of tomorrow -

Helsinki Finland 29 May - 2 June 2017

From digitalisation to augmented reality

Human Beings in the Centre of Planning

- Technical solutions are taken at offices without taking care the reality or actual needs . Input from stakeholders is needed.
- Local circumstances including culture, politics, conventions or traditions have an influence on the success of the process.
- Measuring opinions and views; angles and distances of opinions and views; There is no 'one-for-all' solution
- Be attentive to other frameworks and/or concepts even these are contradicting
- Evaluation and Monitoring of the impacts of the solutions

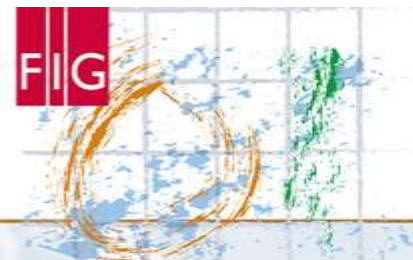
based on Hartvigsen 2014

Dr.-Ing. Michael Klaus | Chair of Landmanagement TUM | Hanns-Seidel-Foundation

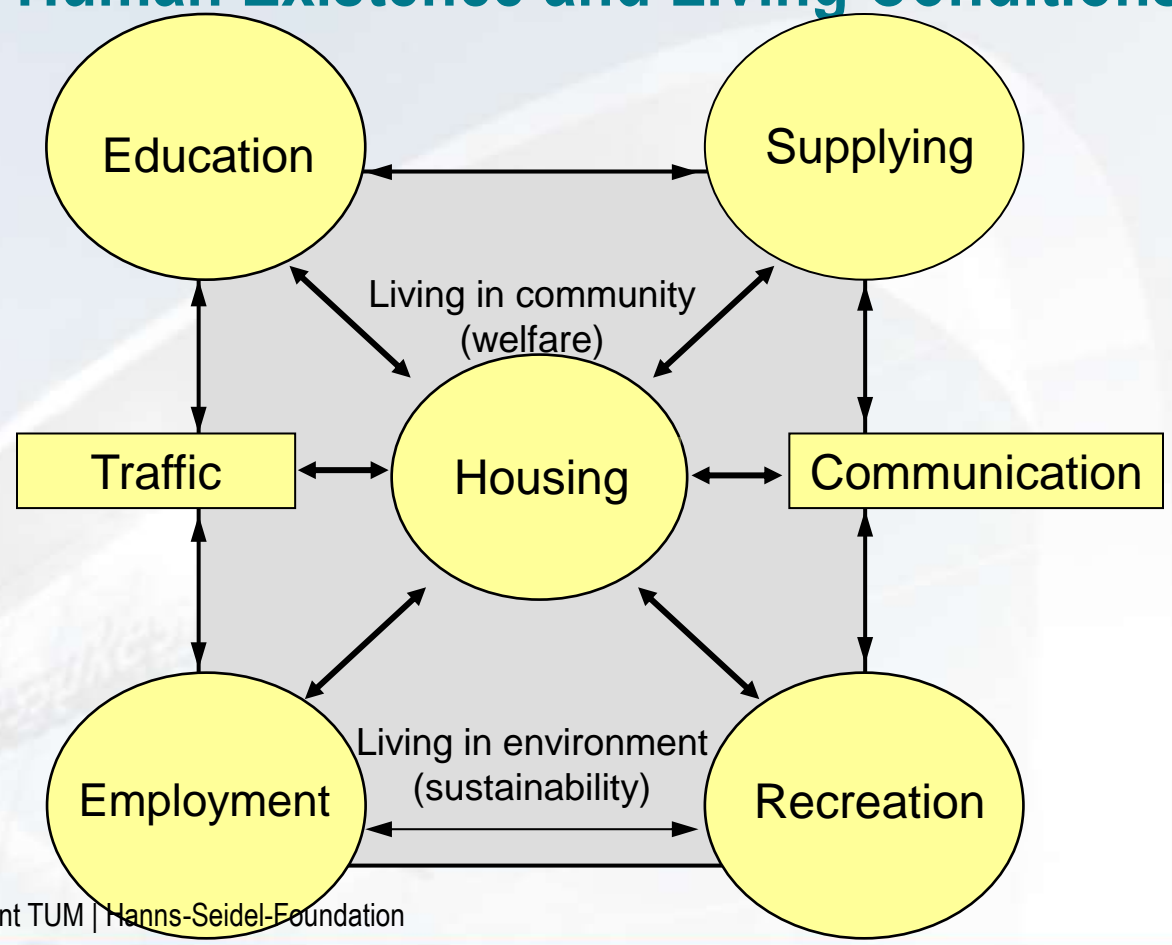


Platinum Sponsors:





Basic Functions of Human Existence and Living Conditions



Dr.-Ing. Michael Klaus | Chair of Landmanagement TUM | Hanns-Seidel-Foundation

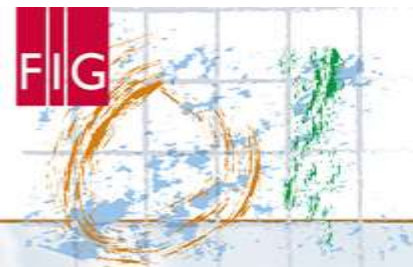


FIG WORKING WEEK 2017

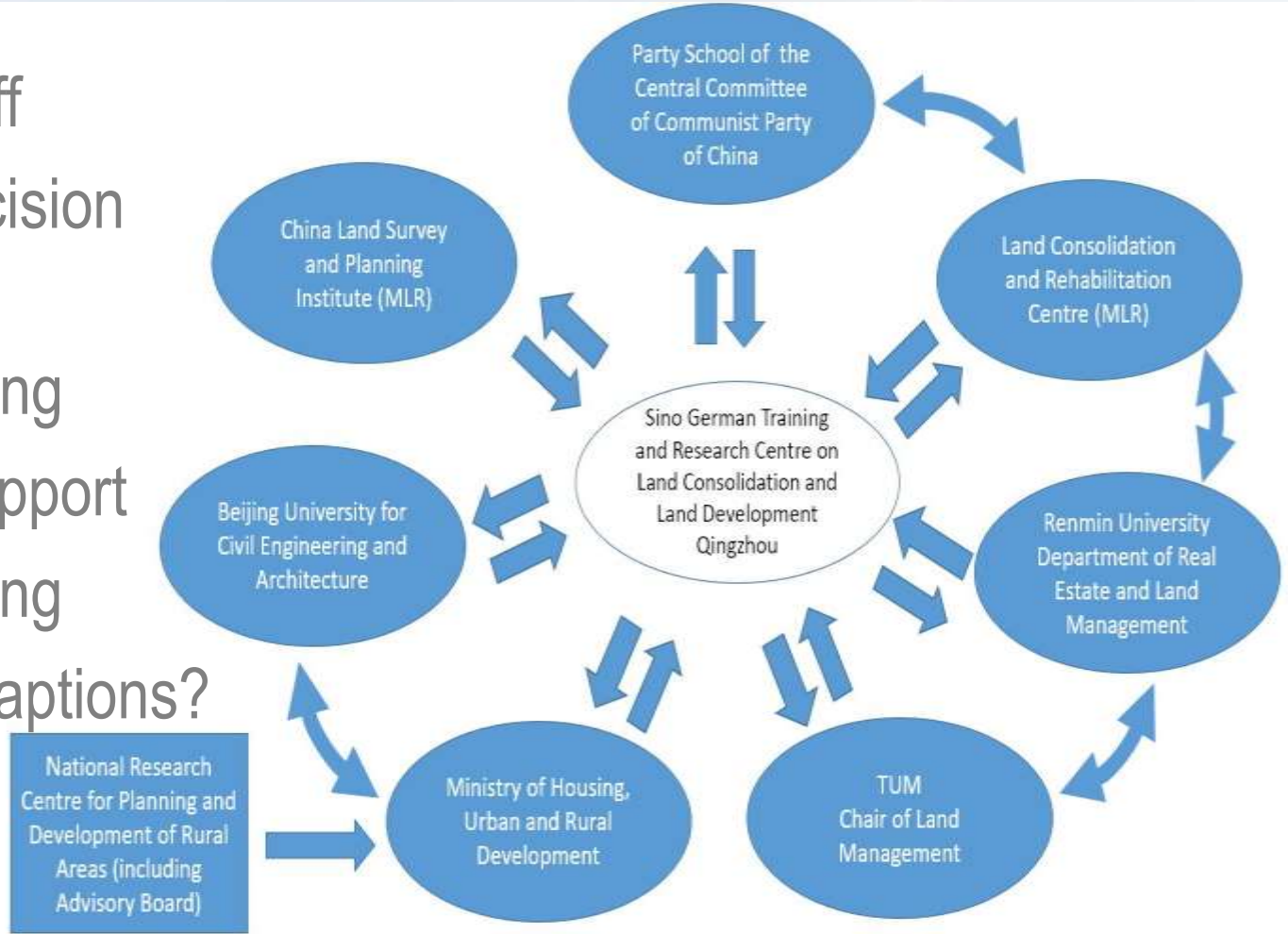
Surveying the world of tomorrow -

Helsinki Finland 29 May - 2 June 2017

From digitalisation to augmented reality

Network to Derive Approach Based Solutions

- Training of Staff
- Training of Decision Makers
- Scientific Guiding
- Institutional Support
- Capacity Building
- Institutional Adaptions?



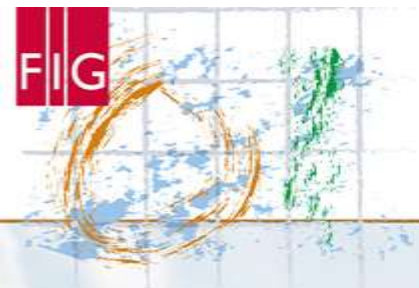


FIG WORKING WEEK 2017

Surveying the world of tomorrow -

Helsinki Finland 29 May - 2 June 2017

From digitalisation to augmented reality

Challenges and new Approaches within the Pilot Project

Three major challenges which need for new Approaches

Dr.-Ing. Michael Klaus | Chair of Landmanagement TUM | Hanns-Seidel-Foundation



Platinum Sponsors:



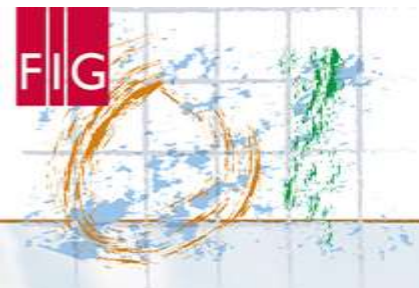


FIG WORKING WEEK 2017

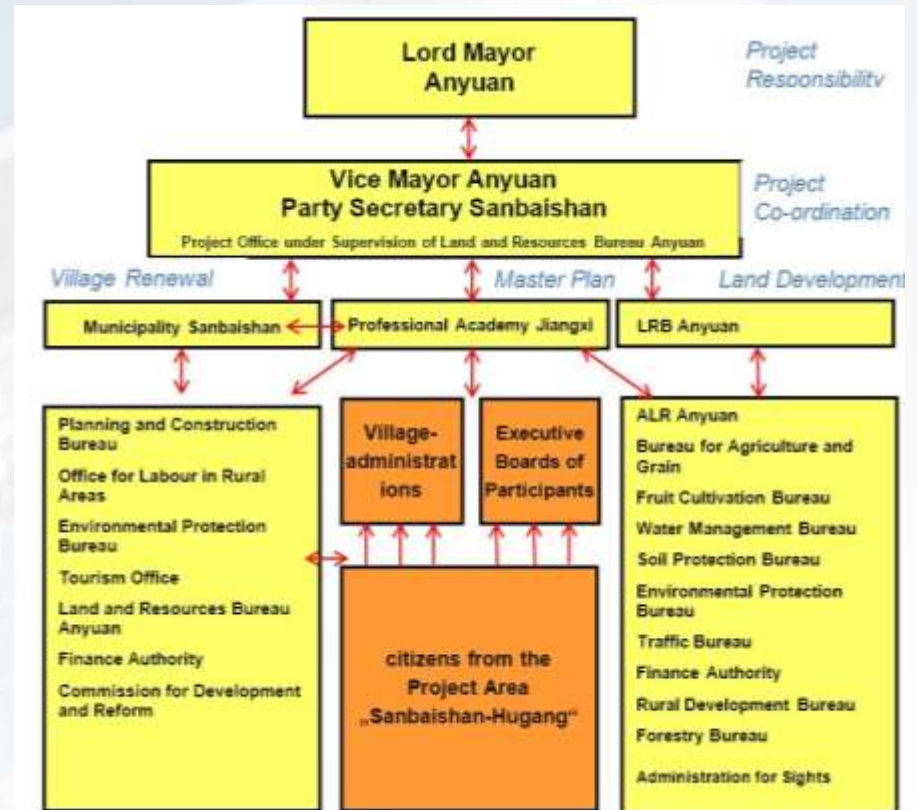
Surveying the world of tomorrow -

Helsinki Finland 29 May - 2 June 2017

From digitalisation to augmented reality

Effective Workflow – New Organizational Structure – Challenge 1

- Freedom in making decision at local level - adapting Chinese characteristics of political leadership
- Involve local people and give them a voice
- Enable a cross-sectional approach
- Establish a co-ordinated Structure



Dr.-Ing. Michael Klaus | Chair of Landmanagement TUM | Hanns-Seidel-Foundation



Platinum Sponsors:



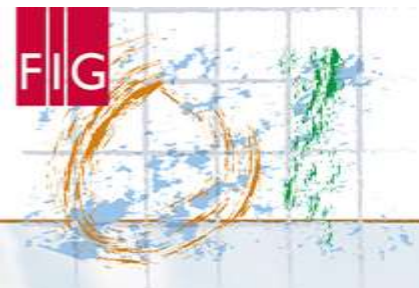


FIG WORKING WEEK 2017

Surveying the world of tomorrow -

Helsinki Finland 29 May - 2 June 2017

From digitalisation to augmented reality

Activating Participation - Challenge 2

- Activating People to Participate in Survey
- Clustering Focus Areas
- Involve Universities and Administration(s) to Share Methodological Knowledge



Dr.-Ing. Michael Klaus | Chair of Landmanagement TUM | Hanns-Seidel-Foundation



Platinum Sponsors:



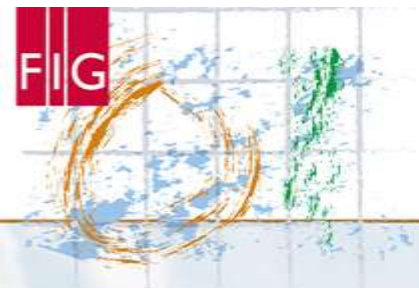


FIG WORKING WEEK 2017

Surveying the world of tomorrow -

Helsinki Finland 29 May - 2 June 2017

From digitalisation to augmented reality

From Problems to Solution Based Actions – Challenge 3

- Analyzing the threats and opportunities
- Formulating common development goals
- Identifying the contributions of different administrations to reach the planning goals



Dr.-Ing. Michael Klaus | Chair of Landmanagement TUM | Hanns-Seidel-Foundation



Platinum Sponsors:



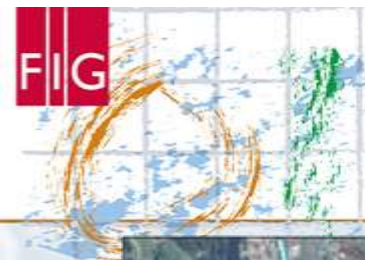
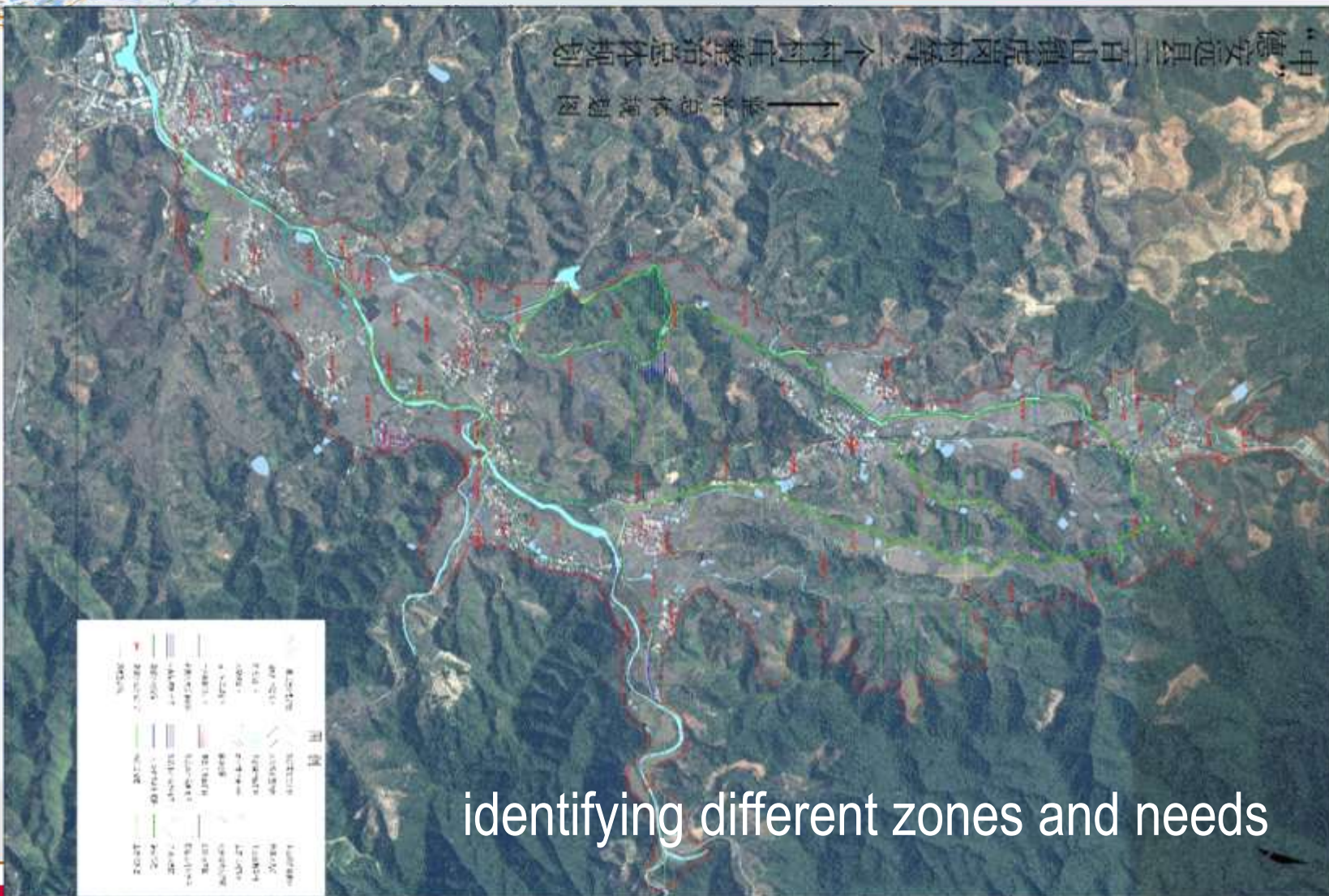


FIG WORKING WEEK 2017

Surveying the world of tomorrow -

Helsinki Finland 29 May - 2 June 2017



identifying different zones and needs



Platinum Sponsors:



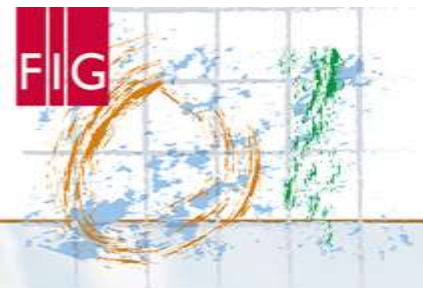


FIG WORKING WEEK 2017

Surveying the world of tomorrow -

Helsinki Finland 29 May - 2 June 2017

From digitalisation to augmented reality

Example for Reshaping

... based on vision of local people



整治要点: 1. 河道渠硬化; 2. 建筑立面; 3. 道路硬化;



Dr.-Ing. Michael Klaus | Chair of Landmanagement TUM | Hanns-Seidel-Foundation



Platinum Sponsors:



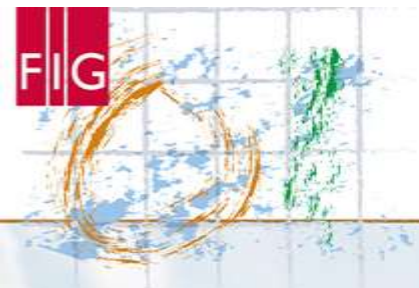


FIG WORKING WEEK 2017

Surveying the world of tomorrow -

Helsinki Finland 29 May - 2 June 2017

From digitalisation to augmented reality

Main Challenges During the Process

- Cooperation
 - within administrations
 - among administrations
 - Between political decision makers and administrations
 - Cooperation between administrations and citizens
- Missing communications patterns
- Lacking institutional frameworks

Dr.-Ing. Michael Klaus | Chair of Landmanagement TUM | Hanns-Seidel-Foundation



Platinum Sponsors:



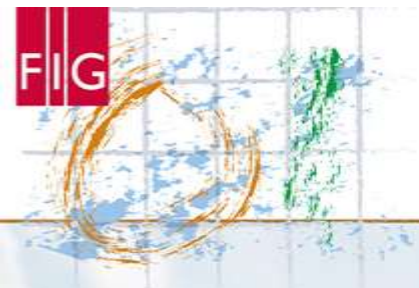


FIG WORKING WEEK 2017

Surveying the world of tomorrow -

Helsinki Finland 29 May - 2 June 2017

From digitalisation to augmented reality

Outlook and Conclusions

- Ongoing Process – Master Plan is in set-up phase
- Revision Phase of Master Plan
- Chinese Government Think Tank Central Party School can approve methods and create theoretical foundations for further institutional development
- Pilot project with the Sino German Training and Research Centre for Land Consolidation and Land Development creates cross institutional exchange

^{*} Dr.-Ing. Michael Klaus | Chair of Landmanagement TUM | Hanns-Seidel-Foundation



Platinum Sponsors:



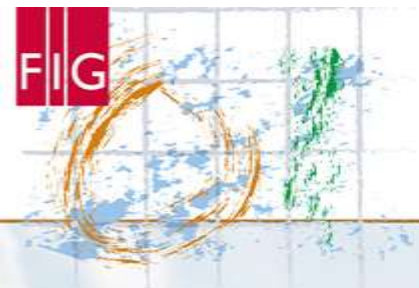


FIG WORKING WEEK 2017

Surveying the world of tomorrow -

Helsinki Finland 29 May - 2 June 2017

From digitalisation to augmented reality

Thank You for Your Attention

...Open for Questions and Discussions

Dr.-Ing. Michael Klaus | Chair of Landmanagement TUM | Hanns-Seidel-Foundation



Platinum Sponsors:



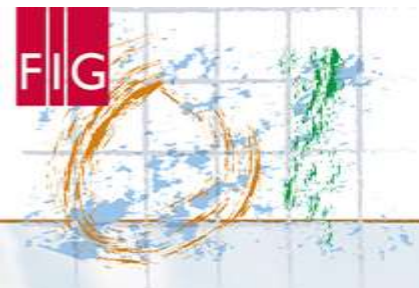


FIG WORKING WEEK 2017

Surveying the world of tomorrow -

Helsinki Finland 29 May - 2 June 2017

From digitalisation to augmented reality

Bibliography

- Klaus, M., Magel, H. and de Vries, W. (2016): *Integrated Rural Development – A Challenging Task and Roadmap for Development of Rural Areas in China*. In Proceedings of *Land Consolidation and Land Readjustment for Sustainable Development*, 9-11 November 2016, Apeldoorn, the Netherlands
- Klaus, M.; Magel, H. (2016): Von der Flur- und Dorferneuerung im kleinen Provinzdorf zur Verbesserung der Lebens- und Arbeitsverhältnisse im großen China. In ZfV 2/2016 Themenheft „Deutsche Beiträge zum Landmanagement in der internationalen Entwicklungszusammenarbeit“ p. 114-121
- Magel, H.; Espinoza, J.; Klaus, M.; Masum, F. (2009): *Capacity Building in Land Management: The Need for Establishing a Global Academic Partnership*. In: Proceedings of 7th FIG Regional Conference on „Spatial data serving people: Land governance and the environment – Building the capacity“, 9.–22. Oktober 2009, Hanoi, Vietnam
- Klaus, M. (2005): *Sustainable Land Management – A New Approach for Implementation*. In: Proceedings of the FIG-Working Week 2005 „Pharao to Geoinformatic“ (Published 25. April 2005): http://www.fig.net/pub/cairo/tech_programme.htm

Dr.-Ing. Michael Klaus | Chair of Landmanagement TUM | Hanns-Seidel-Foundation



Platinum Sponsors:

