



# XXVII FIG CONGRESS

11-15 SEPTEMBER 2022  
Warsaw, Poland

Volunteering  
for the future –  
Geospatial excellence  
for a better living

## Historical Survey Materials as an Important Basis in Rural Revitalization to Improve the Quality of Life (11765)

Arch. Przemysław Baster, Ph. D.

Department of Agricultural Land Surveying, Cadaster and Photogrammetry

Faculty of Environmental Engineering and Land Surveying

University of Agriculture in Krakow



ORGANISED BY



PLATINUM SPONSORS



## Austrian Historical Survey Materials (18th and 19th century) to be discussed:

- Austrian First Military Survey (Josephinian Map, *Josephinische Landesaufnahme*), XVIII century
- Austrian Second Military Survey (Franciscan Map, *Franzische Landesaufnahme*), XIX century
- Austrian Third Military Survey, XIX century
- Austrian cadastre, XIX century



## The second military survey



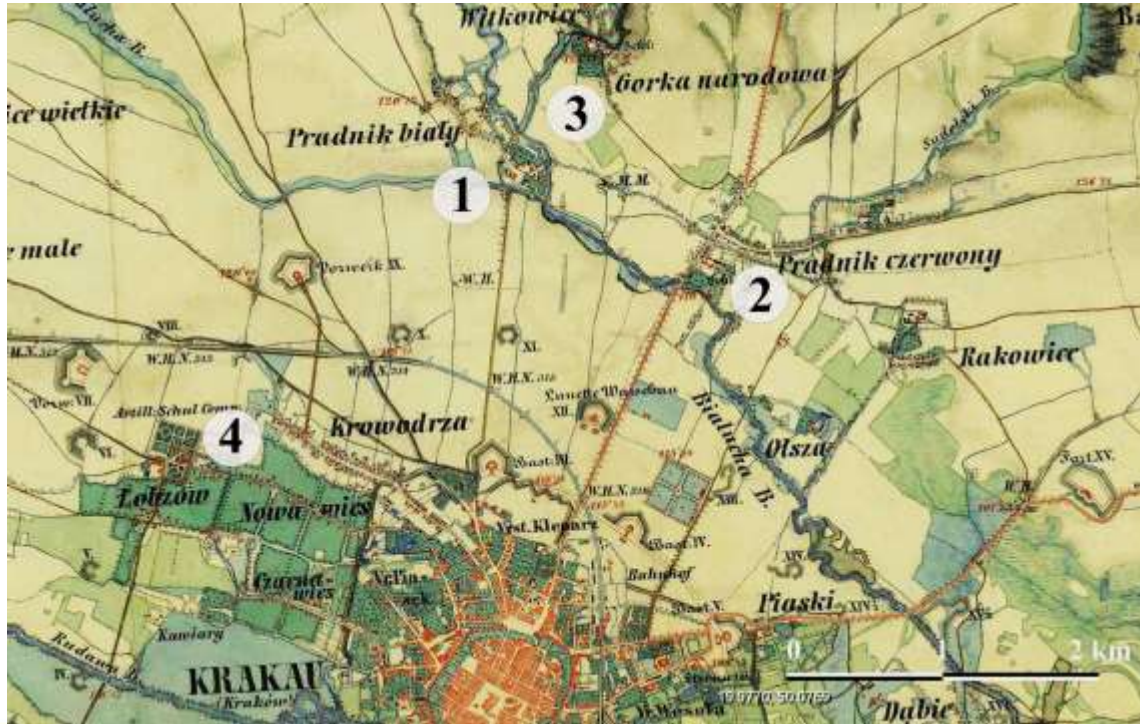
**The second military survey**, encompassing – at least in part – the territories of dozen European countries: Poland, Ukraine, Czech Republic, Slovakia, Hungary, Romania, Serbia, Croatia, Slovenia, Italy, Austria, and Liechtenstein.

Graphic signs by the author.  
Map source: [www.mapire.eu](http://www.mapire.eu).



## Famous garden estates nearby Krakow and villages far away from cities

The research makes it possible to adapt historical forms to today's needs, design appropriate spatial solutions, protect cultural heritage – historical geospatial excellence for a better living.

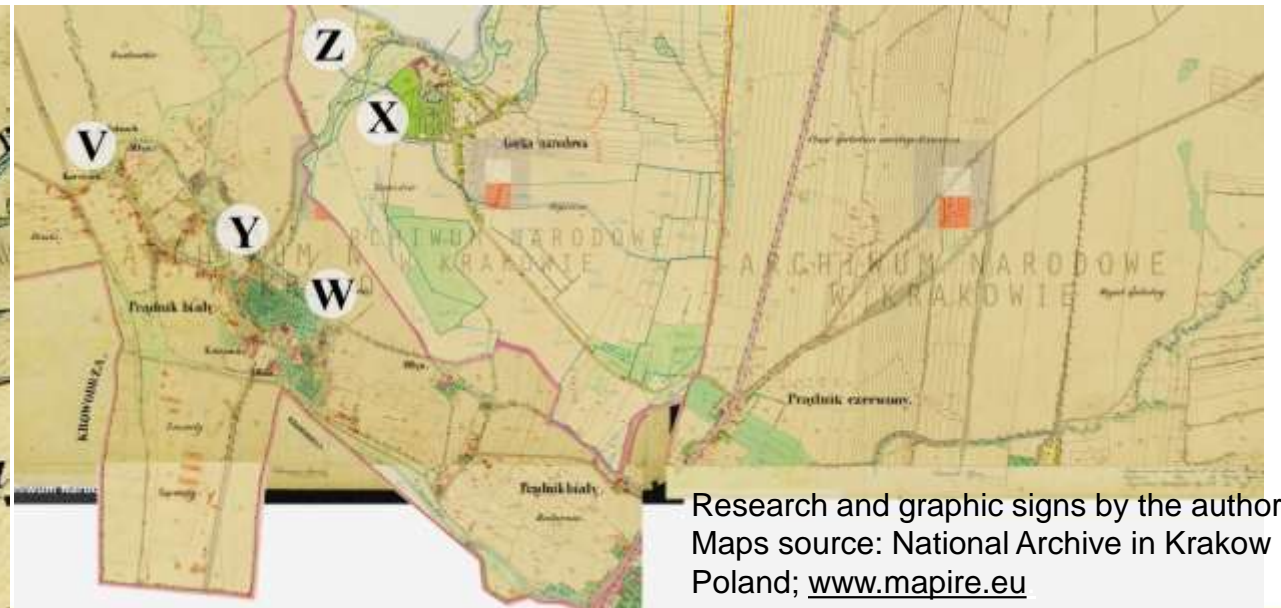


Research and graphic signs by the author.  
Maps source: [www.mapire.eu](http://www.mapire.eu).



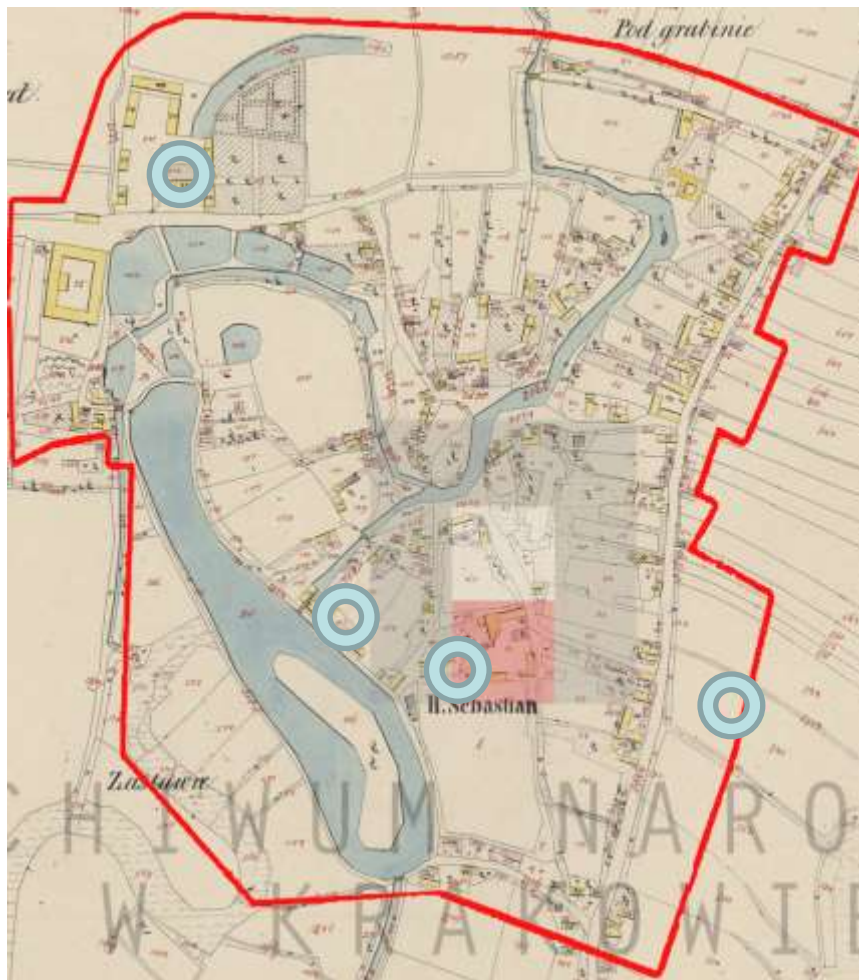
## The second military survey and the Austrian cadaster

Their comparative analysis allows to reconstruct brilliant spatial solutions and elements, which currently do not exist or are hard to perceive. An overwhelming majority of those forms and solutions would be valuable today, so the results of the research can be applied to the landscape designing.



Research and graphic signs by the author.  
Maps source: National Archive in Krakow  
Poland; [www.mapire.eu](http://www.mapire.eu)





## Strzelce Wielkie village

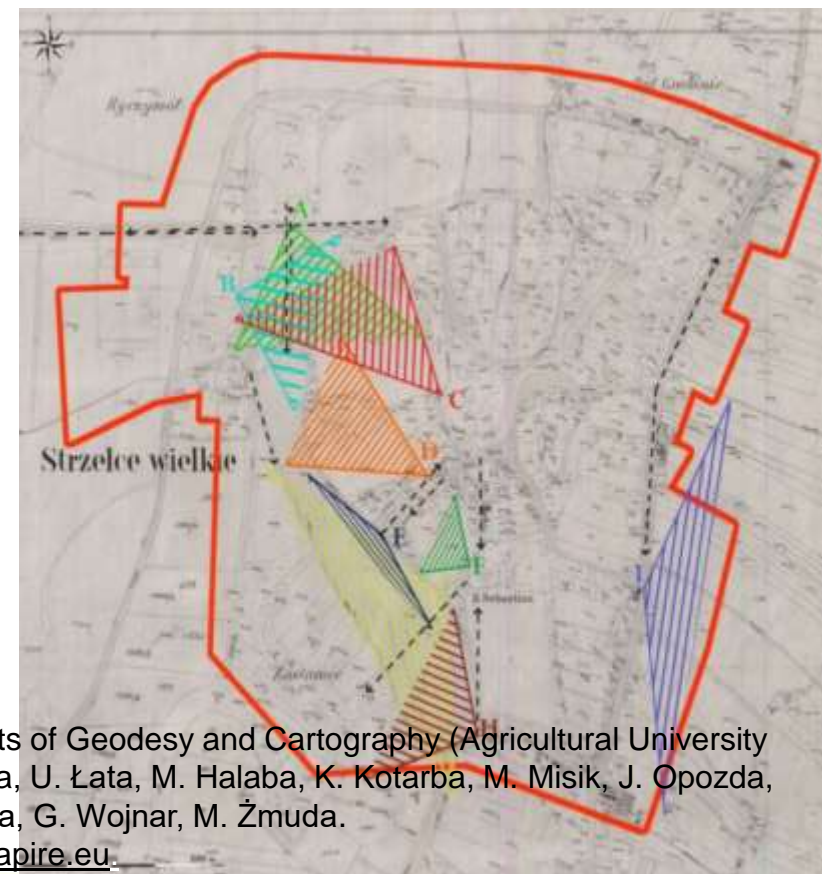
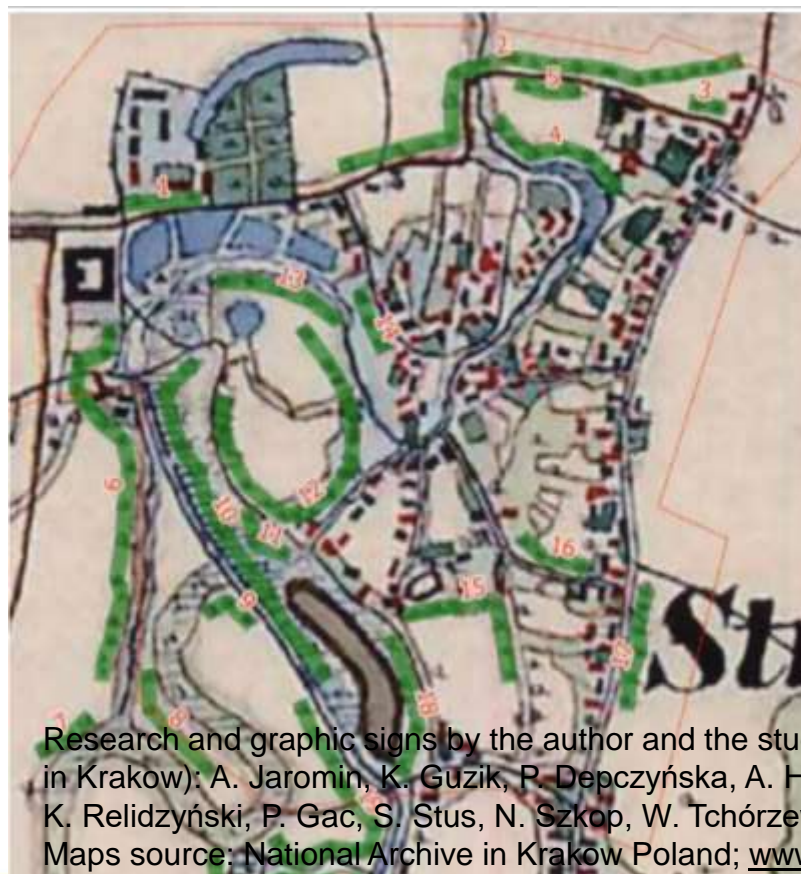
Spatial structure of the village has been determined by the Młynówka Stream and four buildings: manor house, wooden church, flour mill and tavern. Nearly all landscape form have been linked with them by compositional relationship.

Research and graphic signs by the author.  
Maps source: National Archive in Krakow  
Poland; [www.mapire.eu](http://www.mapire.eu)



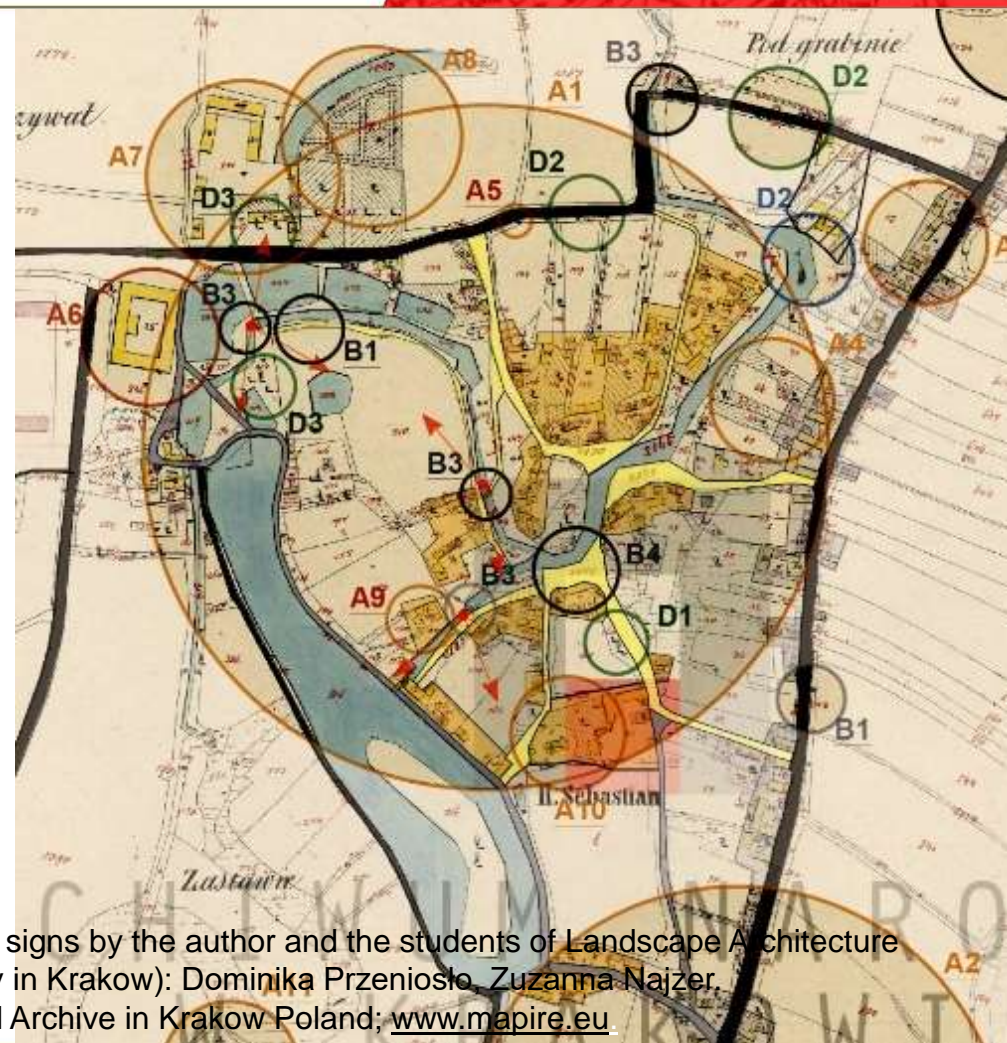
## Strzelce Wielkie village

Historic (XIXth century): urban layouts, system of greenery, views



Research and graphic signs by the author and the students of Geodesy and Cartography (Agricultural University in Krakow): A. Jaromin, K. Guzik, P. Depczyńska, A. Homa, U. Łata, M. Halaba, K. Kotarba, M. Misik, J. Opozda, K. Relidzyński, P. Gac, S. Stus, N. Szkop, W. Tchórzewska, G. Wojnar, M. Żmuda.  
Maps source: National Archive in Krakow Poland; [www.mapire.eu](http://www.mapire.eu).





Research and graphic signs by the author and the students of Landscape Architecture (Agricultural University in Krakow): Dominika Przeniosło, Zuzanna Najzer.  
Maps source: National Archive in Krakow Poland; [www.mapire.eu](http://www.mapire.eu)



## Historical comparison method. Guidelines and designs.



1. Research and graphic signs by prof. Urszula Litwin and students of Geodesy and Cartography. 2,3. Research and graphic signs by the author and the students of Landscape Architecture (Agricultural University in Krakow): K. Ćwik, N. Stępień.  
Maps source: [geoportal.gov.pl](http://geoportal.gov.pl)



„The avenue” between  
famous Polish health  
resort in Horyniec-Zdrój...



... and church complex in  
Radruż (UNESCO)



The importance of  
the analyses of the  
historical maps.

Photos by the author, 2012