

Newcomers session

Welcome to FIG Working Week 2024!

Purpose: Welcoming You to FIG and the Working Week. Presenting and discussing how to make most use of the intensive week.

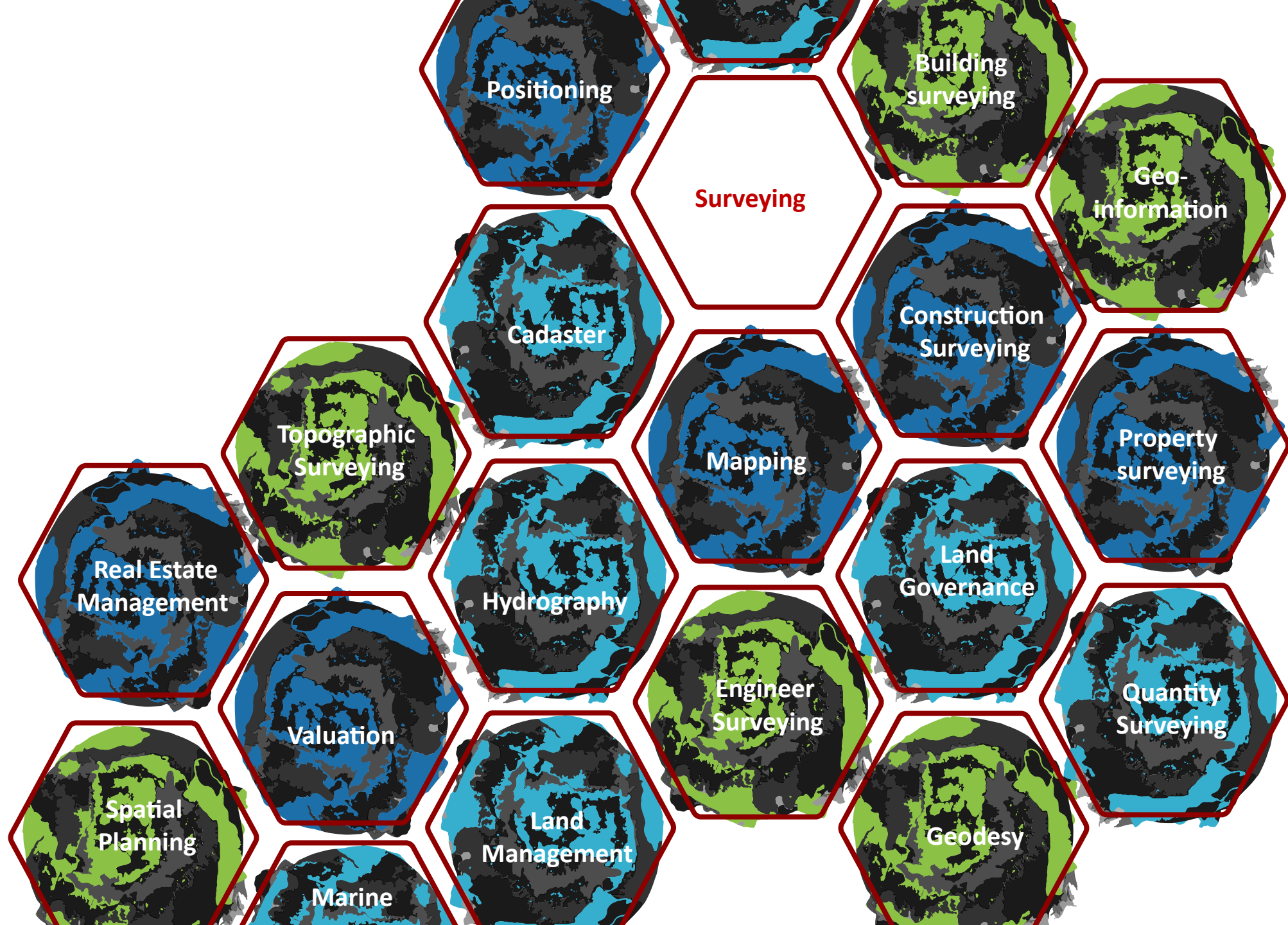


Who are we?

Mikael Lilje, FIG vice President 2021-2024
Claudia Stormoen Pedersen, FIG Event and Support Manager

An aerial photograph of a rural landscape. In the center, a large, calm lake is surrounded by green fields and dense forests. To the left, a small village with white-roofed houses is visible. The foreground shows a river flowing through the landscape, with more fields and some buildings. The background features rolling hills and a distant horizon under a clear sky.

**FIG represents
the interests of
surveyors
worldwide**



Official language in FIG ?

- We speak English of course, but ...
- You will hear different English dialects from native and non-native speakers
- The big majority of us are non-native speakers
- And we... the big majority of non-native speakers do not speak ...free of errors!!

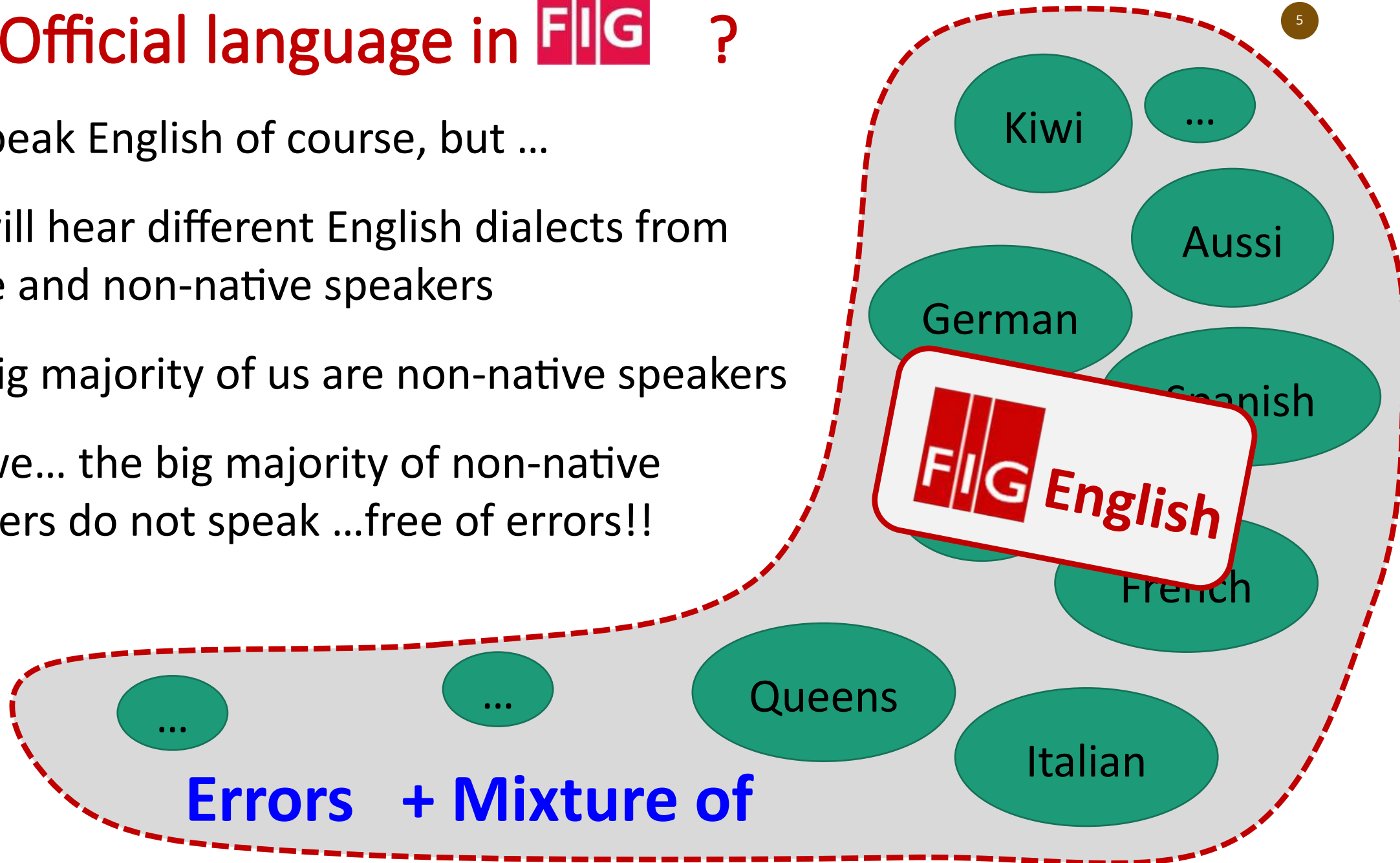
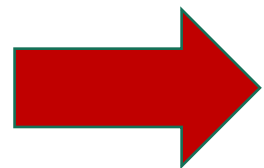




FIG Working Week 2024

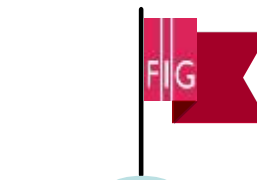
19-24 May

Accra, Ghana

Your World, Our World:
Resilient Environment
and Sustainable
Resource Management
for All

Mission of FIG

Mission of the International Federation of Surveyors is to ensure that the disciplines of surveying and all who practice them meet the needs of the markets and communities that they serve.



ORGANISED BY



EOSA



Who are the members of

Over [?]120 countries represented in 2024 – more than 300,000 individuals

FIG Member Associations
2024

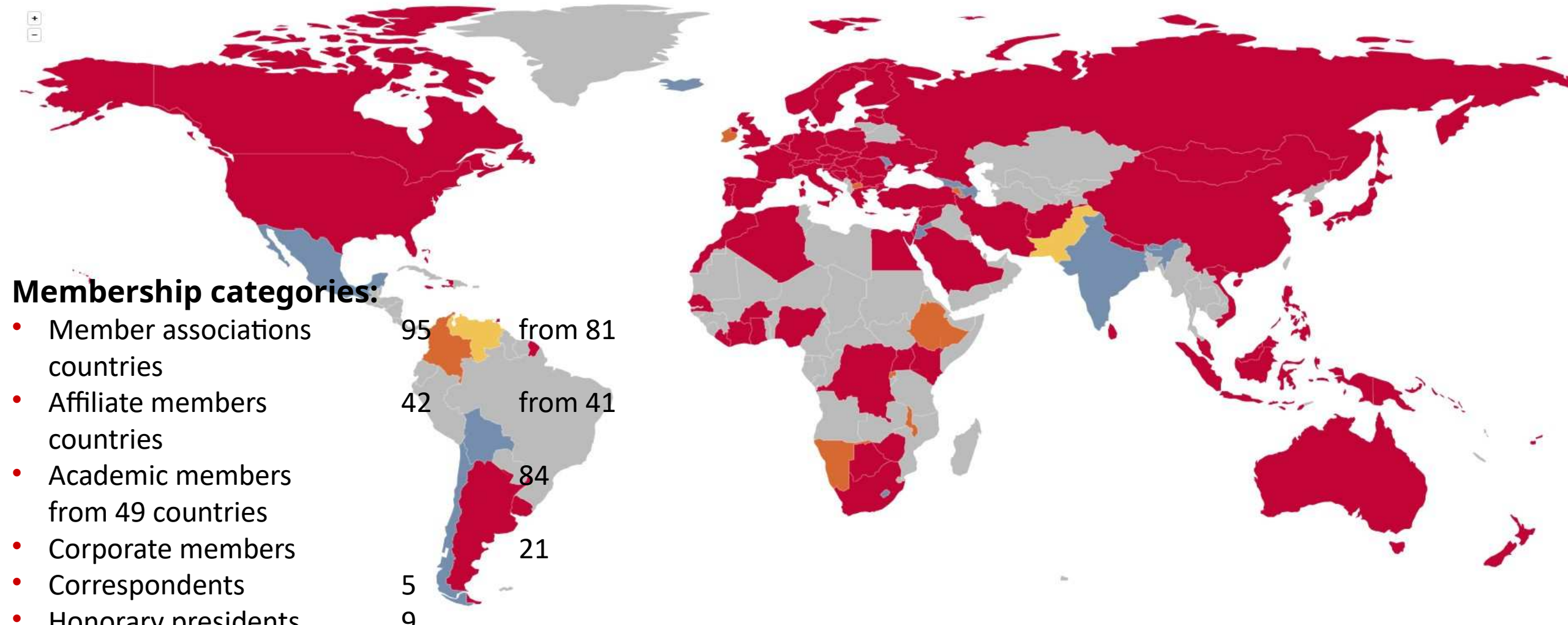


FIG Office - Copenhagen

Since 1999

(General Assembly Decision 1998)

*Behind this window
is the
FIG office!*



Louise Friis-Hansen
Director



Claudia Stormoen
Events and Support
Manager



Maria Bargholz
Finance and
Administration



FIG Working Week 2024

19-24 May

Accra, Ghana

Your World, Our World:
Resilient Environment
and Sustainable
Resource Management
for All

- General Assembly – oversight and voting
- Council: President and four VPs over a four-year term (2022- 26)
- Other administrative bodies
 - Four Networks: Young Surveyors, Three Regional Capacity development (Americas, Africa and Asia Pacific), Standards.
 - 10 Commissions
- Task Forces
 - FIG and the Sustainable Development Goals
 - Role of FIG in International Trends and Future Geospatial Information Ecosystem
 - Diversity and Inclusion in the Surveying Profession
 - Reimagining the Climate Action Agenda for the Global Surveyor Community through FIG

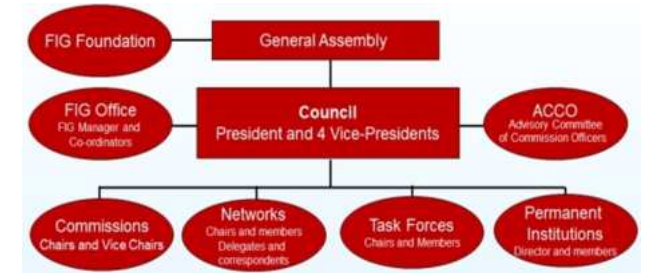




FIG Working Week 2024

19-24 May

Accra, Ghana

Your World, Our World:
Resilient Environment
and Sustainable
Resource Management
for All

OUTCOME



ORGANISED BY



PLATINUM SPONSORS



What is a FIG Working Week?

- 14 plenary speakers
- 250 + presentations
- 75 + sessions
- Corporate members Sessions Esri, Leica Geosystems, Trimble (during lunch)
- 3 sessions in French
- Member sessions – Member associations, Director Generals, Academia
- Early morning Workshops (grab a coffee and go to the room)
- Regional Capacity Network Sessions



FIG Working Week 2024

19-24 May

Accra, Ghana

Your World, Our World:
Resilient Environment
and Sustainable
Resource Management
for All

What is a FIG Working Week?

- Meeting with partners
- Ghanaian sessions
- 800 participants from all over the world
- Ghanaian Evening
- Gala Dinner
- Commission dinners
- Technical tours
- Social Tour

ORGANISED BY



PLATINUM SPONSORS



GEOSA
Geospatial Quality Assurance
General Authority for Surveying
and Geospatial Information



What is a FIG Working Week?

- Exhibition – 33 exhibitors
- Cultural experience
- Networking
- Peer-to-peer conversations
- Smiles and Laughs

Monday, 20 May	PLENARY 1	PLENARY 2	ROYAL DRAGON – AFRICAN CORNER	"THE MARKET"
08:00–09:00			Newscasters Session	
09:15–10:05	PLENARY SESSION 1 – Part 1: People and Place: Africa insights connecting Land Governance for All – Plenary Dome, La Palm			
10:05–11:15	PLENARY SESSION 1 – Part 2: Traditional Leaders, Africa: Governance Connectivity Challenges and Positive Impacts of Technology – Plenary Dome, La Palm			
11:15–11:45	Deep Dive SDG – Plenary Dome, La Palm		Morning Break – Exhibition Hall, La Palma	
11:45–13:15	TS02A: Open Spatial Digital Data for Resilient Environments and Societal Well-being – C: 3	TS02B: Transparency: Definition and Measurement of Transparency in the Real Estate Market, Good Cases – C: 9	TS02C: The Quest for Good Land Governance in Africa	TS02D: Deformation Monitoring of Civil Structures and Natural Phenomena – C: 6
13:15–14:30	Lunch – Restaurant, La Palm			FIG Platinum Member Session: LEICA GEOSYSTEMS
14:30–16:00	TS03A: Land Administration Education – C: 2, 7, GLTN, NELGA	TS03B: Facing the Changing Climate & Environmental Degradation: Hydrosocial Solutions – C: 4 & TF Climate	FIG Director Generals Forum	TS03D: New Approaches in Data Acquisition, Visualization and Interaction with Data – C: 6
16:00–16:30	Afternoon Break – Exhibition Hall, La Palm			
16:30–18:00	TS04A: Academic Networks for Knowledge Sharing – C: 2	TS04B: Valuation Challenges: Valuation, Standards, Expropriation – C: 9	Access to Land for Sustainable Climate Action and Infrastructure – C: WB	Sponsor Presentations: GEOSA: 16:30–17:00 SUPER MAP: 17:00–17:30 SOUTH SURVEY INSTRUMENT: 17:30–18:00
Tuesday, 21 May				
08:00–09:00			TS05C: International Trends and Future Geospatial Information Ecosystem – C: TF Trends	
09:15–11:15	PLENARY SESSION 2: Land Tenure, Resources and Minerals: Building Sustainable and Resilient Resource Management for the Planet – Plenary Dome, La Palm			
11:15–12:15	Deep Dive SDG – Plenary Dome, La Palm (11:15–11:45)		Morning Break – Exhibition Hall, La Palma	
12:15–13:15	ANNUAL MEETINGS – FIG COMMISSIONS 1–10 (Diverse venues, see p. 45)			
13:15–14:30	Lunch – Restaurant, La Palm			FIG Platinum Member Session: TRIMBLE
14:30–16:00	TS07A: COCODOB Session	TS07B: ESG-Valuation, Taxes and Economics – C: 9	TS07C: Meeting of Presidents of African Land Professional Associations – C: ARN	TS07D: In To Africa: Surveying History Revealed – C: History
16:00–16:30	Afternoon Break – Exhibition Hall, La Palm			
16:30–18:00	TS08A: Smart Hydrography for Sustaining the Hydrosocial Domain – C: 4	TS08B: Management of Real Estate under ESG Criteria – C: 9 & 10	FIG Member Association Forum	TS08D: Land Governance and Legal Solutions – C: 7
Wednesday, 22 May				
08:00–09:00			TS09C: Regional Capacity Development Networks – Collaboration Forum 1	
09:15–11:15	PLENARY SESSION 3: Your World – Our World: Inclusive Urban Geospatial Infrastructure – Plenary Dome, La Palm			
11:15–11:45	Deep Dive SDG – Plenary Dome, La Palm		Morning Break – Exhibition Hall, La Palma	
11:45–13:15	TS10A: Good Practices of African Academic Institutions in Responding to the Needs of the Land Sector	TS10B: Digital Technologies in Construction – The Future Vision of BIM – C: 10	CASLE MEETING (11:45–13:45)	TS10D: Land Management Tools for Spatial Governance – C: 8
13:15–14:30	Lunch – Restaurant, La Palm			FIG Platinum Member Session: ESRI
14:30–16:00	TS11A: GIS, BIM, Digital Twin, and NSDs: Pushing forward the Smart City Vision – Session 2 – C: 3	TS11B: Southern Africa Innovations in Education – C: 2	TS11C: Regional Capacity Development Networks – Collaboration Forum 2	TS11D: Measuring Progress, Driving Impact: Surveyors at the Forefront of Sustainable Development – C: 2, 7 & TF SDG
16:00–16:30	Afternoon Break – Exhibition Hall, La Palm			
16:30–18:00	TS12A: Progresses in Crowdsourced and Grassroots Global and Local Initiatives – C: 3	TS12B: Diversity and Collaboration – How Experts can work together to improve transparency – C: 9	TS12C: The African Woman Land Professional and Good Land Governance in Africa: Challenges and Opportunities	

Monday, 20 May	ODWIHA	KUNDUM	ADAE RESIE	DAMBA 1	OTHER	Monday, 20 May
08:00–09:00		TS01F: Novel Cost-Effective Positioning & Engineering Systems and their Applications for Africa – C: 5 & 6	TS01G: Climate Change and Land Administration – C: 7 & TF Climate			08:00–09:00
09:15–10:05						09:15–10:05
10:05–11:15						10:05–11:15
11:15–11:45						11:15–11:45
11:45–13:00	TS02E: Land Use Planning for Tenure Security in and around Urban, Peri-Urban and Rural Areas – C: 8, GLTN, MUST	TS02F: The Future of FIG YSN: Charting A Course For Sustainable Growth And Impact – C: YSN	TS02G: Fit-for-Purpose Land Administration: Cases and Impacts – C: 7	TS02H: Smart Construction Approaches for Sustainable Development – C: 10		11:45–13:00
13:00–14:30						13:00–14:30
14:30–16:00	TS03E: Geo-Spatial Intelligence for Smart and Sustainable Settlements – C: 3 & 8	The Impact of Youth on Land Administration Globally: Showcasing the VCSP – C: 7, GLTN, Trimble & YSN	TS03G: 3D Land Administration and Digital Twins – C: 3, 7, ISO, OGC	TS03H: Promoting Inclusive Practices in Geospatial Professions		14:30–16:00
16:00–16:30						16:00–16:30
16:30–18:00	TS04E: Addressing Land Degradation and Restoration through Spatial Planning – C: 8 & UNCCD	TS04F: Africa-China Joint Knowledge Exchange: Urban-Rural Land Experiences and Practices – C: 8, Hannu Seidel Found., MUST, GLTN	TS04G: Land Administration Domain Model: Status Check – C: 3 & 7	TS04H: Task Force on the Surveyor's Profession: Evolutionary Diversity and Inclusion – ROUND TABLE		16:30–18:00
Tuesday, 21 May						Tuesday, 21 May
08:00–09:00	TS05E: Spatialities: Land, Spatial Development and Climate Change – C: 8, GLTN, MUST, NELGA	TS05F: The Growing Roles & Responsibilities of Surveyors as Data Engineers and Resource Managers – C: 5, TF SDG	TS05G: Cadastral Data Quality, Openness and Methods – C: 7	TS05H: Land Administration Education Workshop – C: 2, 7, GLTN, NELGA Southern Africa	FIG Foundation Meeting (7:00–9:00) Kwale – FIG President's Room	08:00–09:00
09:15–11:15						09:15–11:15
11:15–12:15			TS06G: Session en français – 1 (11:45–13:15)			11:15–12:15
12:15–13:15						12:15–13:15
13:15–14:30						13:15–14:30
14:30–16:00	FIG Academic Forum	TS07F: Accelerating Land Administration Success with GNSS CORS Networks: Insights for Senior Decision Makers – C: 5, 7, ARN, IAG, IGS, UN-GGIM-Africa, UN-GGCE	TS07G: Session en français – 2 (14:30–16:00)	TS07H: What Specific Actions can Individual Surveyors and Professional Bodies take to Achieve Women's Land Rights? – C: 1, 7, SAHL, WB		14:30–16:00
16:00–16:30						16:00–16:30
16:30–18:00	TS08E: Transforming Ghana's Land Administration System: The Role of the Land Commission	TS08F: GNSS CORS Reference Stations and Networks – Session 2 – C: 5, 7, ARN, IAG, IGS, UN-GGIM-Africa, UN-GGCE	TS08G: Session en français – 3	Critical Emerging Areas for Global Work towards Gender Equality in the Land Sector – C: GLTN		16:30–18:00
Wednesday, 22 May						Wednesday, 22 May
08:00–09:00	TS09E: Mapping the Surveying Profession's Climate Impact Potential – C: YSN & TF Climate	TS09F: Advancing Surveying through Technology including Uncrewed Systems – C: 5	FIG Presidents Meeting (07:30–09:00)			08:00–09:00
09:15–11:15						09:15–11:15
11:15–11:45						11:15–11:45
11:45–13:15	TS10E: Investment and Finance Issues in Land Administration – C: 7 & 9	TS10F: Mapping the Plastic – C: 4 & TF Climate	TS10G: Cadastral Innovations World Tour – C: 7	TS10H: Empowering and Improving the Life of Women in Muslim Communities through increased access to Housing, Land and Property – C: GLTN		11:45–13:15
13:15–14:30						13:15–14:30
14:30–16:00	Forum for Regional Bodies (FoRB)	TS11F: Exploring Climate Issues Together – Interactive Workshop Session – C: TF Climate	TS11G: Land Policy Issues and Innovations – C: 7 & UN-GGIM EG-LAM	TS11H: Valuation of Unregistered Land – Next Stages for Non-Market Value, Expropriation and... – C: FIG, RICS, IVSC, CASLE, FGF, UN GLTN	FIG Corporate Members Meeting Kwale – FIG President's Room	14:30–16:00
16:00–16:30						16:00–16:30
16:30–18:00	TS12E: Digitally Transformed Land Governance in Action – C: 7 & 8	TS12F: Climate Resilience Actions for the Future – C: TF Climate, 2, 3, 7, 8	TS12G: Cadastral AI and Remote Sensing – C: 7	TS12H: Construction Contract Management – C: 10		16:30–18:00



FIG Working Week 2024

19-24 May

Accra, Ghana

Your World, Our World:
Resilient Environment
and Sustainable
Resource Management
for All

www.fig.net/fig2024

FIG Working Week 2024
19-24 May
Accra, Ghana

Your World, Our World: Resilient Environment and Sustainable Resource Management for All

**TECHNICAL
PROGRAMME BOOK**

Organised by
FIG LISAG

Platinum Sponsors
GEOSA esri Trimble

FIG Working Week 2024
19-24 May
Accra, Ghana

Your World, Our World: Resilient Environment and Sustainable Resource Management for All

General Location Programme Presenters Sub Events & Tours Registration Social Exhibition

WELCOME TO FIG WORKING WEEK 2024

Accra, Ghana 19 - 24 May 2024

AKWAABA! WELCOME TO ACCRA!

FIG Working Week is no ordinary conference; it is a week-long celebration of innovation and collaboration that unites the global community of surveying and spatial professionals. Here, you will have the unique opportunity to bridge the gap between science and the policymakers and stakeholders who drive real-world change. With the theme

Your World, Our World: Resilient Environment and Sustainable Resource Management for all

the conference will focus on how geospatial technologies and innovations as well as

ORGANISED BY



PLATINUM SPONSORS





FIG Working Week 2024

19-24 May

Accra, Ghana

Your World, Our World:
Resilient Environment
and Sustainable
Resource Management
for All

The Conference does not stop when you return home

- What output do you aim to bring home
- What can you use in your daily work
- Inspiration and ideas from sessions
- Tell your colleagues what you have learned and what ideas you have
- Network – during the Working Week
- Network – when you are back home

Plan to come back to new found friends!

ORGANISED BY



PLATINUM SPONSORS





FIG Working Week 2024

19-24 May

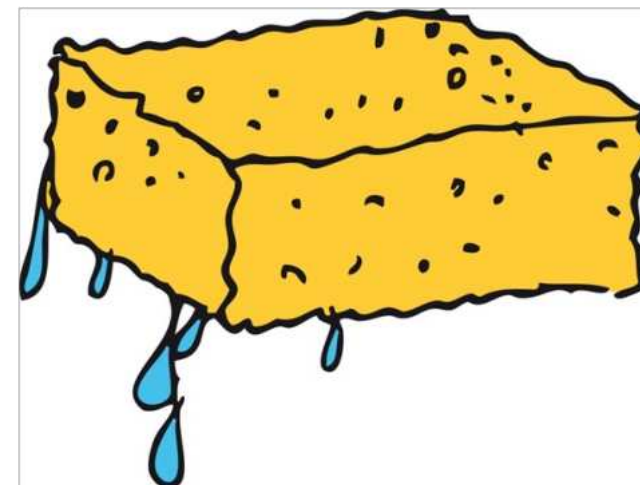
Accra, Ghana

Your World, Our World:
Resilient Environment
and Sustainable
Resource Management
for All

What type are you?

The sponge

(who wants to get everything they can learn and read)



ORGANISED BY



PLATINUM SPONSORS



GEOSA
Geospatial Quality Assurance
Authority for Surveying
and Geospatial Information





FIG Working Week 2024

19-24 May

Accra, Ghana

Your World, Our World:
Resilient Environment
and Sustainable
Resource Management
for All

What type are you?

Super Fan

(who wants to meet his/her hero)



ORGANISED BY



PLATINUM SPONSORS



GEOSA
Geospatial Quality Assurance
General Authority for Surveying
and Geospatial Information



What type are you?

Escapologist

(who wants to escape the daily work)





FIG Working Week 2024

19-24 May

Accra, Ghana

Your World, Our World:
Resilient Environment
and Sustainable
Resource Management
for All

What type are you?

The Perfect Networker

(who wants to meet new colleagues)



ORGANISED BY



PLATINUM SPONSORS



GEOSA
Geospatial Information
General Authority for Surveying
and Geospatial Information



WELCOME TO FIG

THANK YOU