



Collaboration, Innovation and Resilience: Championing a Digital Generation

Brisbane, Australia 6-10 April

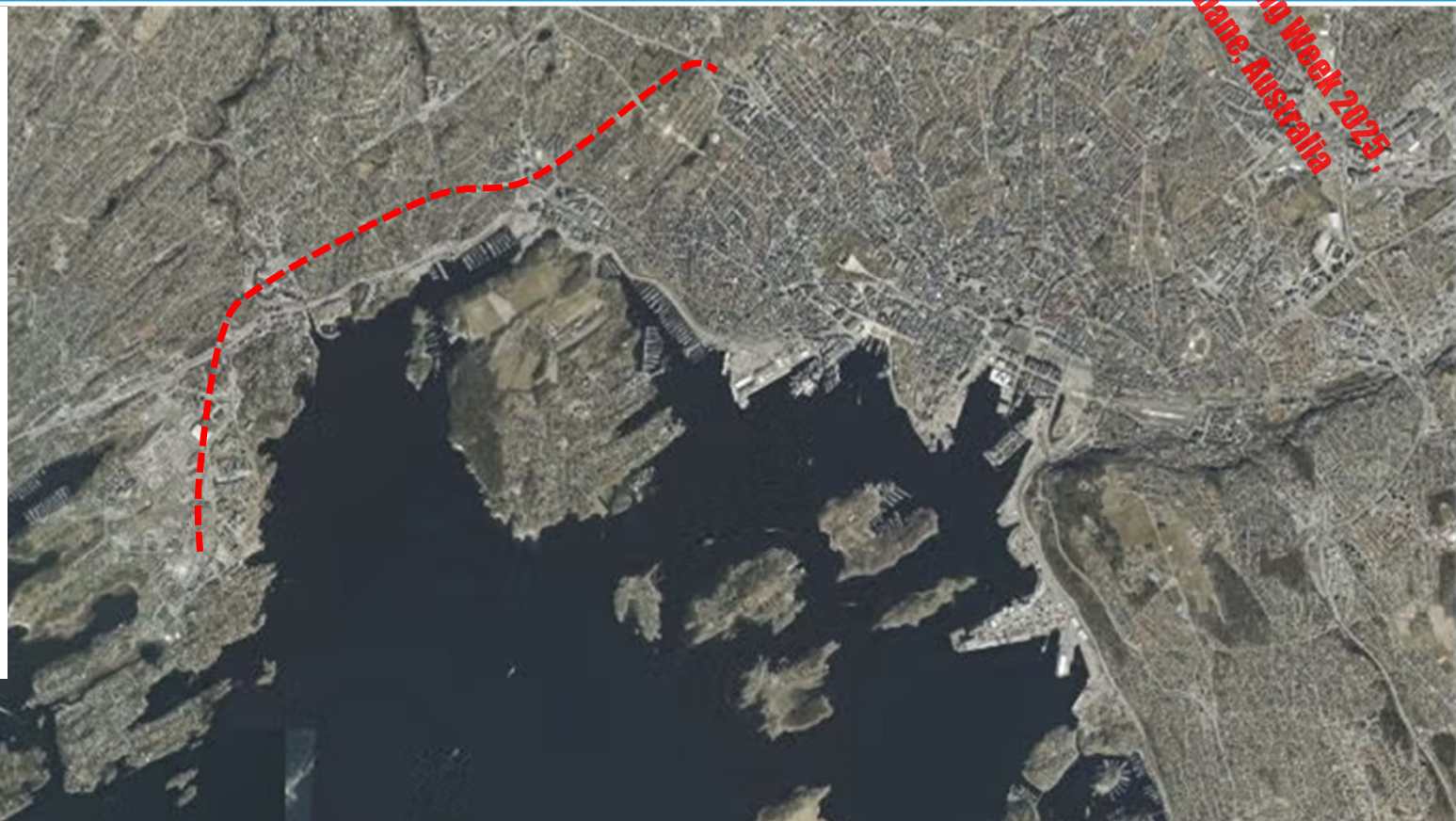


Oslo

The Fornebu Metro Line

7. April 2025

Leif Ingholm, Oslo Municipality



PLATINUM SPONSORS



CHCN AV



Outline

1. The Fornebu line at a glance
2. Digital 3D project – BIM
3. Electric project
4. Zoning plan
5. Who owns the underground?



1 -The Fornebu Line at a glance





**WORKING
WEEK 2025**

AND

Locate25 | **G**
THE NATIONAL GEOSPATIAL CONFERENCE

Collaboration, Innovation and Resilience:
Championing a Digital Generation



Geospatial
Council of Australia

Brisbane, Australia 6–10 April

Transformation from airport to city



ORGANISED BY



Geospatial
Council of Australia

PLATINUM SPONSORS



CHCNAV



The Oslo Metro

- First line opened in 1898
- 101 stations (17 are underground)
- 100 million passengers per year JB1
- Total length 85 km
 - Large metro system compared to number of passenger journeys
- Short station spacing 0,85km
 - Global average is 1,28km
- Average speed 31km/h
 - Global average 34 km/h



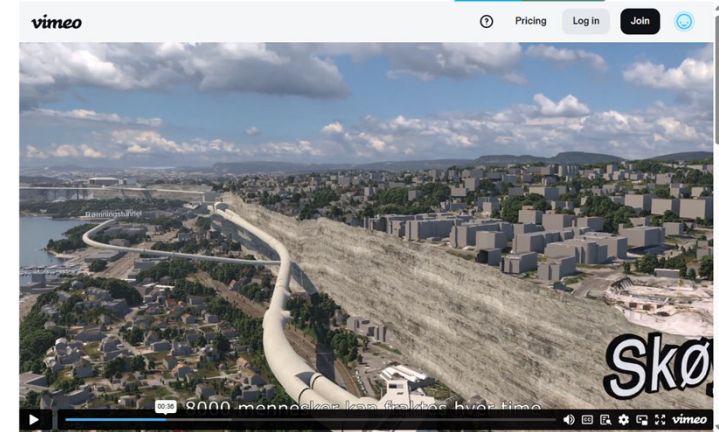
JB1

annually

Jon Magnus Lindløkken Bjørsom; 2025-04-01T12:33:07.212

2 - Fully digital 3D project – BIM (no “flat paper drawings”)

- BIM is the main information platform for the project
 - Communication with government bodies, landowners, neighbours and stakeholders
- Engineering, management, planning, cost control, contract, systematic completion, GIS





**WORKING
WEEK 2025**

AND

Locate25 | **G**
THE NATIONAL GEOSPATIAL CONFERENCE

Collaboration, Innovation and Resilience:
Championing a Digital Generation



Geospatial
Council of Australia

Brisbane, Australia 6–10 April



Oslo



Presenter

ORGANISED BY



Geospatial
Council of Australia

PLATINUM SPONSORS



Australian Government

CHCNAV



THE SCIENCE OF WHERE™

Leica
Geosystems





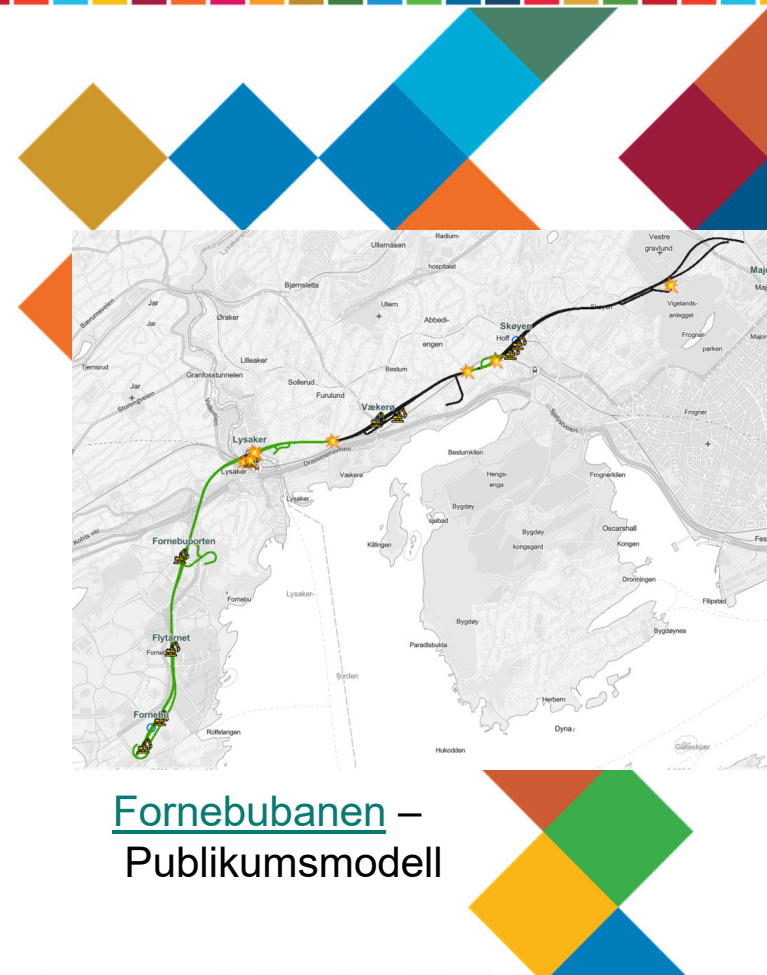
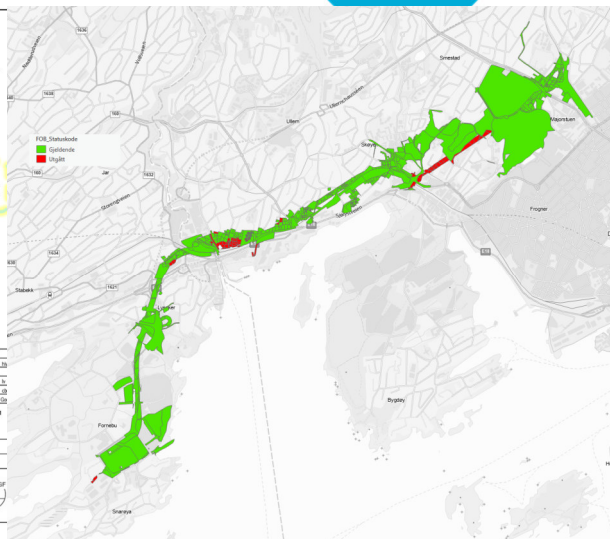
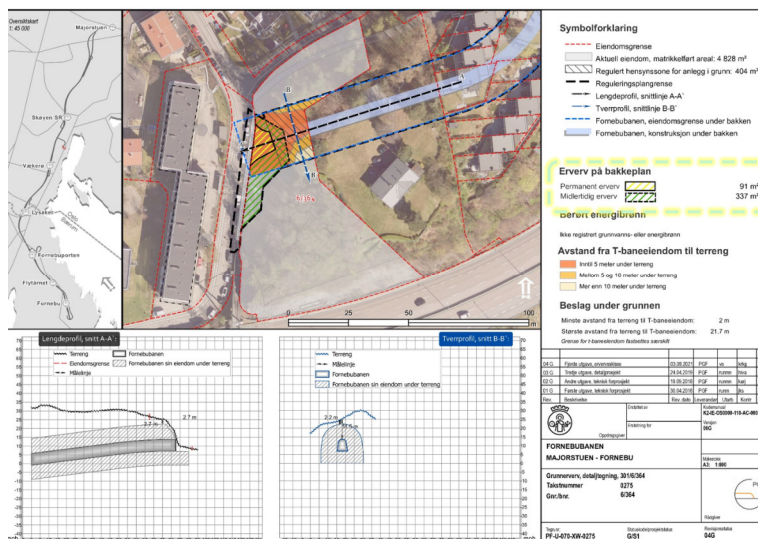
Locate25 | 
THE NATIONAL GEOSPATIAL CONFERENCE

Collaboration, Innovation and Resilience: Championing a Digital Generation



Geospatial
Council of Australia

Brisbane, Australia 6–10 April



Fornebubanen – Publikumsmodell



Geospatial
Council of Australia



- 3D engineering and coordination between disciplines
- Contractors tracking progress
- Connection to public mapping services, Cadastre data, Energy wells, External environment, Flooding Etc.





WORKING
WEEK 2025

AND

Locate25
THE NATIONAL GEOSPATIAL CONFERENCE

Collaboration, Innovation and Resilience:
Championing a Digital Generation



Geospatial
Council of Australia

Brisbane, Australia 6–10 April

The model has entries from the description, providing a direct link between the model object and the entry in the contract.

The screenshot displays the ISY Calcas BIM software interface. The main window shows a 3D model of a building structure. On the left, there is a 'Model' tree with a 'Kalkyle' (Calculation) tab selected. The 'Kalkyle' tab shows a list of model elements with columns for 'Menge' (Quantity), 'Enhet' (Unit), 'Enhetpris' (Unit Price), and 'Sum' (Sum). A blue arrow points from a specific element in the 'Kalkyle' list to a 'Receipte' (Receipt) window. The 'Receipte' window shows a detailed breakdown of the selected element, including a 'Receipte database' table with columns for 'Enhet', 'Enhetpris', 'Sk/bsh', and 'CO2-eq/bsh'. The 'Receipte' window also includes a 'Cost Sum' table with columns for 'Enhet', 'Enhetpris', 'Sk/bsh', and 'CO2-eq/bsh'. The 'Receipte' window is titled '003 Yttervegg Betong 600 B35'.



ORGANISED BY



Geospatial
Council of Australia

PLATINUM SPONSORS



Australian Government

CHCNAV

esri
THE SCIENCE OF WHERE™

Leica
Geosystems



Surveyors
Australia

3 - Fully electric project

Oslo Municipality requires electric or zero emission machines in all its projects

- This has led to increased demand for electric machines



(relatively) New technology

- No different in function than a regular fossil machine (according to the operators)
- Not all machines are available in electric versions
 - Mapped out in advance, so that some operations can be done with non-electric machines
 - Not permitted to use biogas under ground
- The machinery is in a development phase. The dumper trucks load 37 T
 - We have already taken in larger ones (60 T), still not “world class”, but the technology is moving.



SANY - SKT90E
Electric Off-Highway Mining Truck
Load Weight 37 T

IM1

Her kan du vurder å si at vi ikke kan bruke biogass under jord, og derfor når vi ikke målsetttningen om full utslippsfrihet i 2025. Bente har holdt presentasjon for kinesisk gruppe og har sikkert noe om dette i engelsk versjon.

Irene Synnøve Måsøval; 2025-04-01T11:52:13.125

Charging

- Charging infrastructure is important for success!
- Large construction sites =

movement between
charging and attack,
drains power
- Plan a sufficiently developed power grid for charging
- Requires a sufficient capacity in the local power grid





**WORKING
WEEK 2025**



Geospatial
Council of Australia

Brisbane, Australia 6–10 April

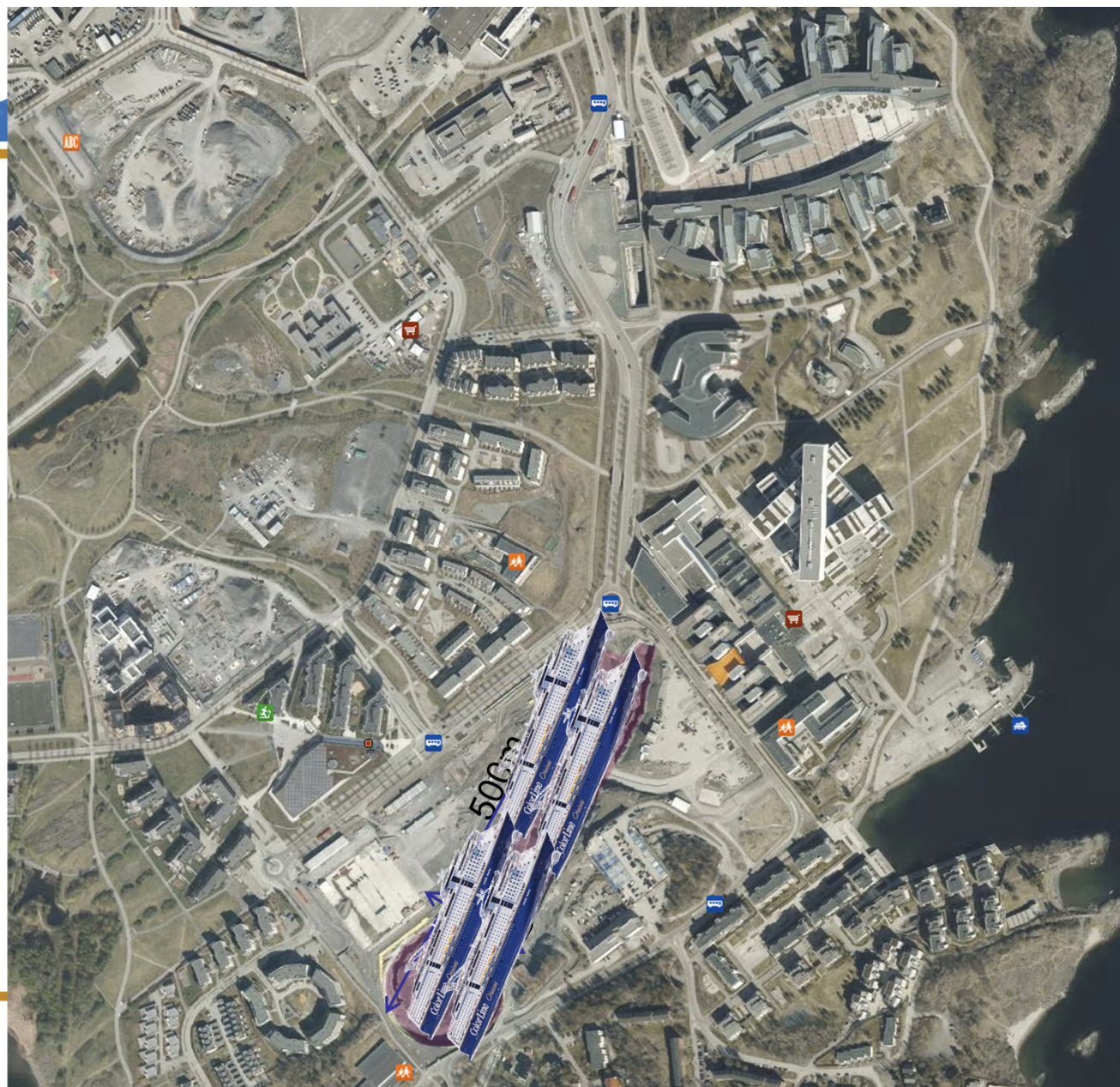


ORGANISED BY



Geospatial
Council of Australia







**WORKING
WEEK 2025**

AND

Locate25 
THE NATIONAL GEOSPATIAL CONFERENCE

Collaboration, Innovation and Resilience:
Championing a Digital Generation



Geospatial
Council of Australia

Brisbane, Australia 6–10 April



ORGANISED BY



Geospatial
Council of Australia

PLATINUM SPONSORS



Australian Government

CHCNAV



esri
THE SCIENCE OF WHERE™

Leica
Geosystems



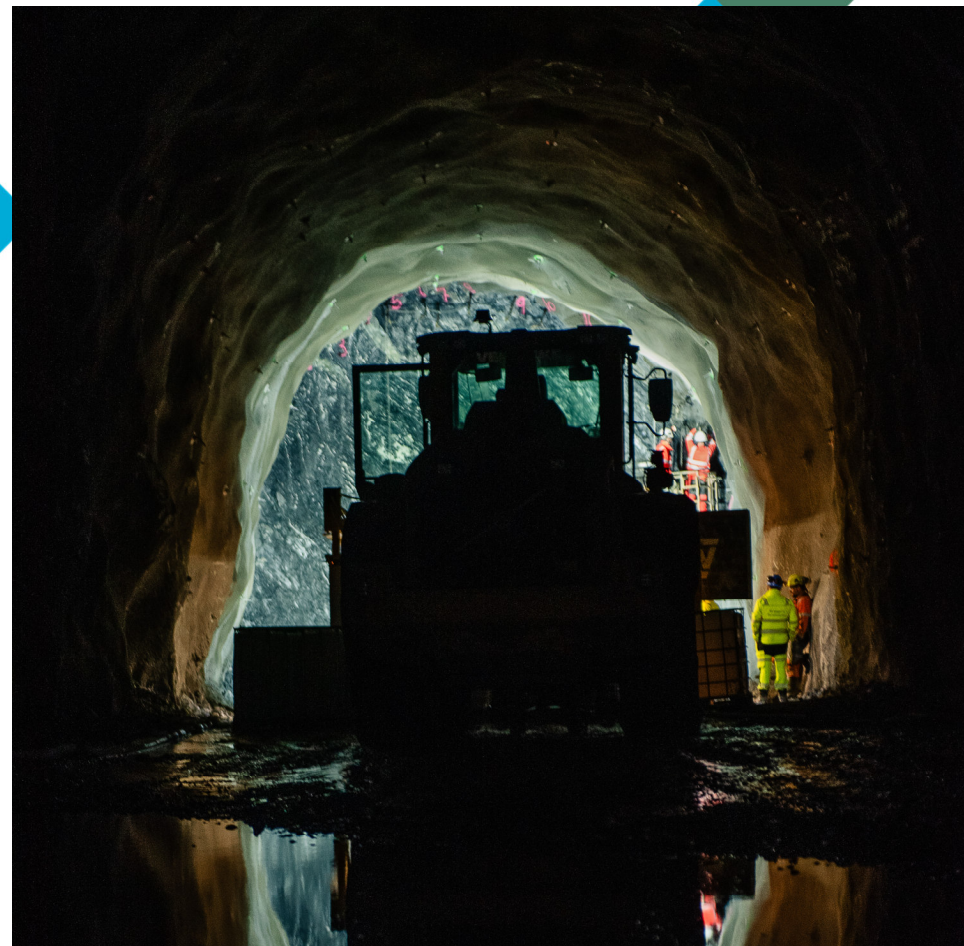
iwb
Meter



Surveyors
Australia

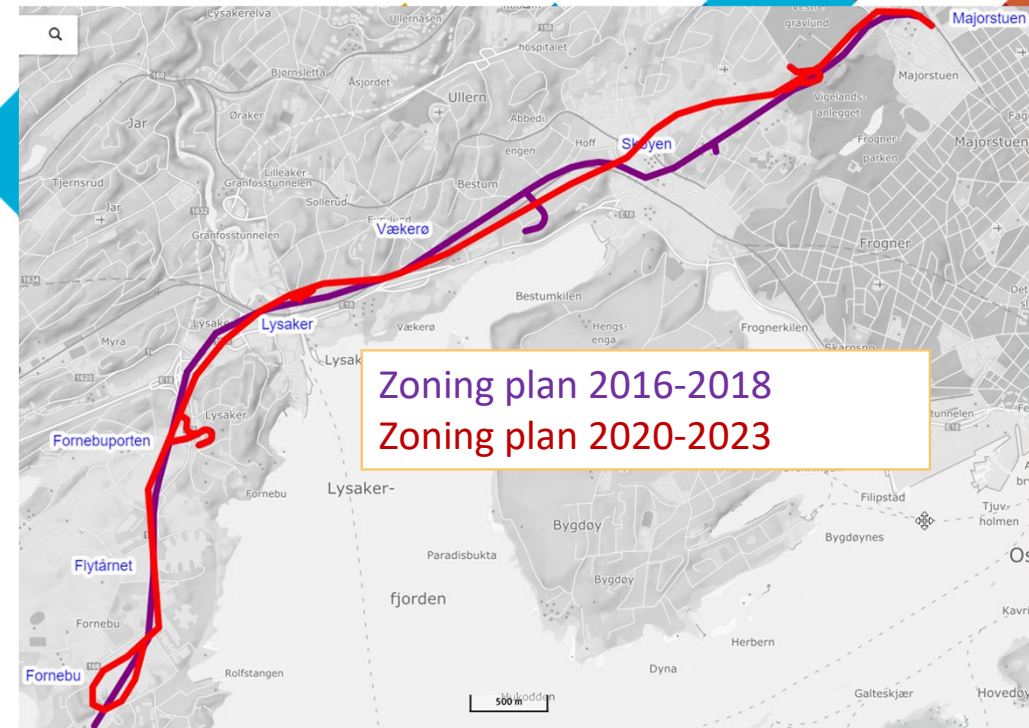
Have a back up

- The machines have some childhood illness
- Frequent breakdowns, subsequent troubleshooting, repair and lack of spare parts, are more common for some new types of electric machinery
- In order not to jeopardize project progress, we made predefined procedures to use non-electric machines



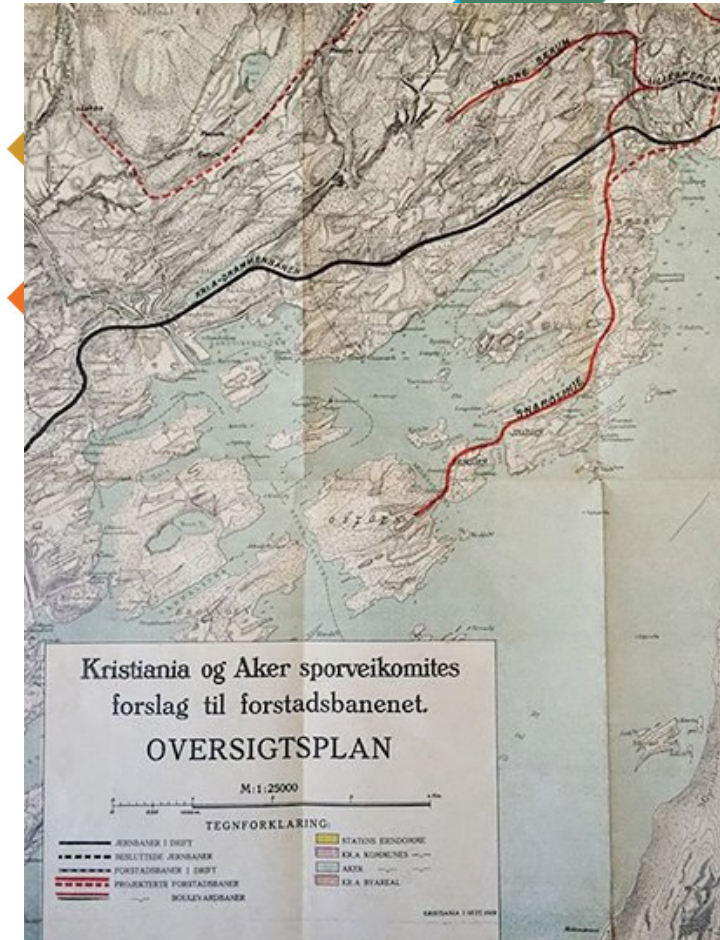
4 - The zoning plans

- Oslo and Bærum are two separate municipalities and therefore, two planning processes
- Greater project maturity = constantly challenged the zoning boundaries
- Always invest your energy in the early phase!
 - Early land acquisition is highly critical for progress



Quick historic revju

- 1919: First Suburban rail proposal
- 1939: Airport open
- 1990s: Plans for conventioal railroad.
- 2003 and 2005: Zoning plan for automatic Monorail/Sky-rail
- 2007: Plans for Sky-rail dropped – Tram proposed instedad
- 2012: Akershus County decides to built a conventional metro, connected to the existing metro system.
- 2016 and 2018: Zoning plan for metro approved
- 2020: We decide to change the layout of the metro.
- 2020-2023: Zoning and building in parallell. The plan was split in to several smaller plans.



Municipal masterplan 1, 2 and 3

KDP 1 1996

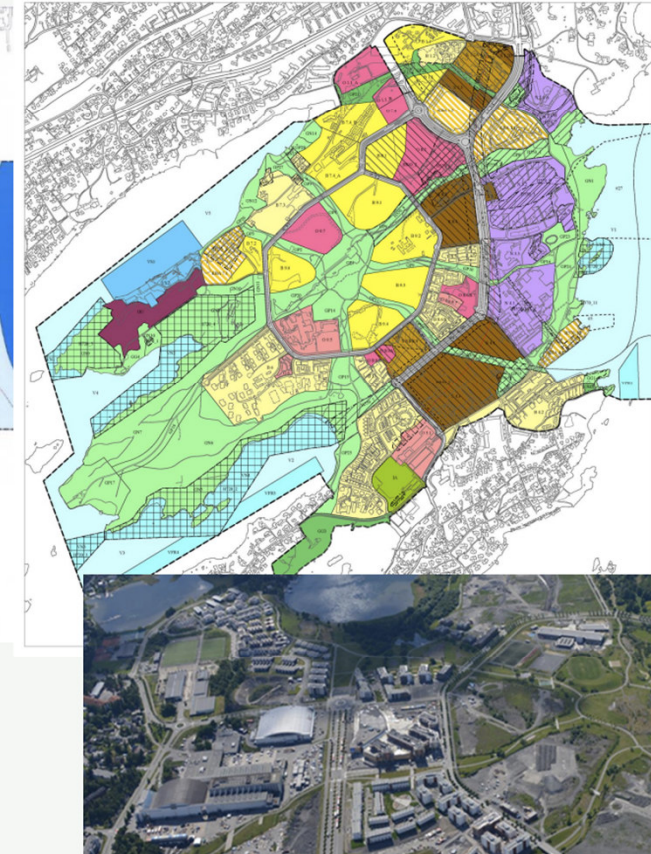


15 000 inhabitants
15 000 workplaces

KDP 2 1999

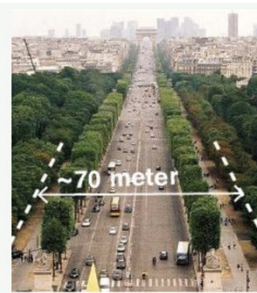


KDP 3 2019

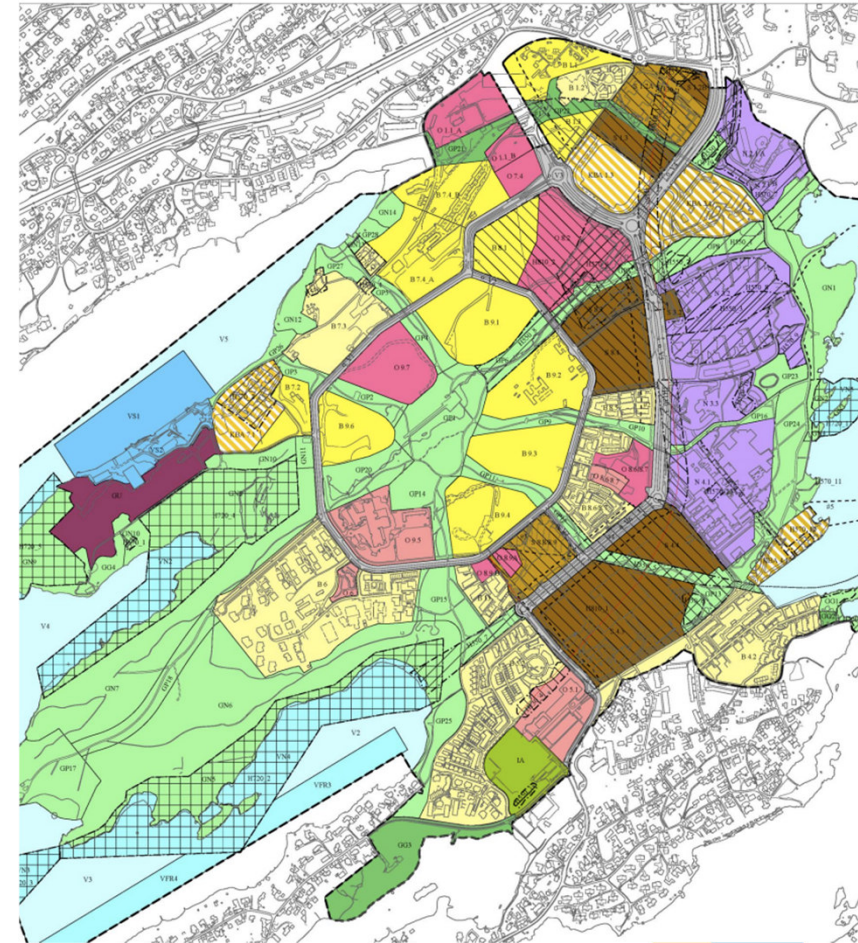


Municipal masterplan 3

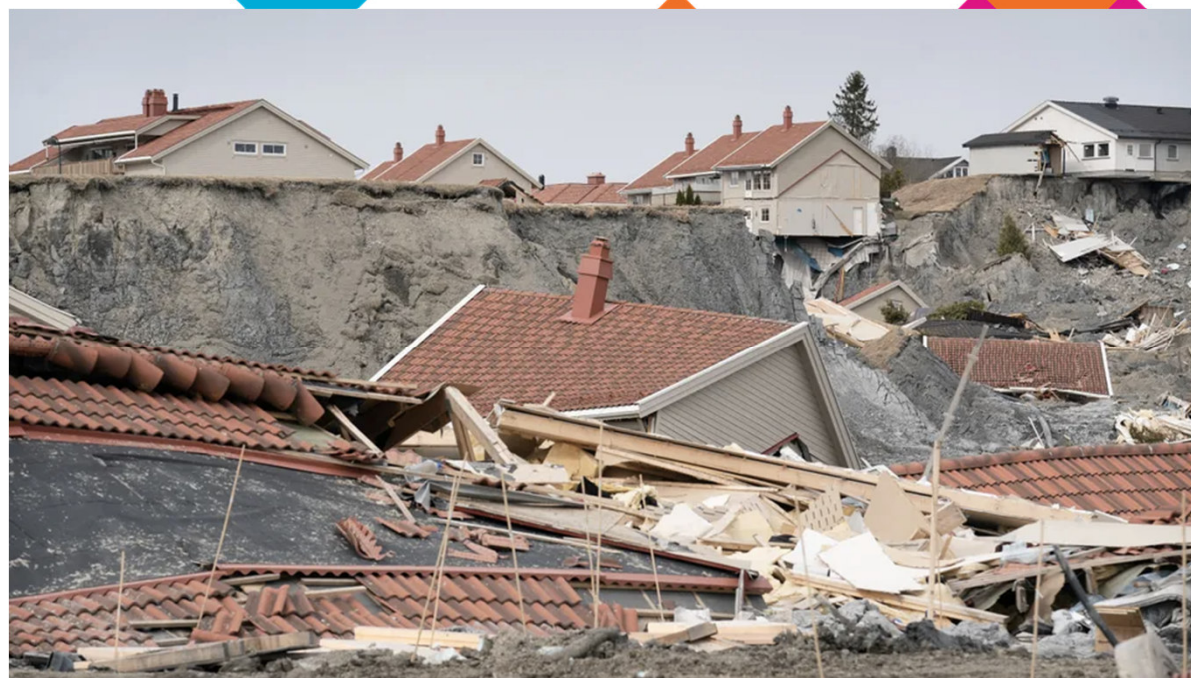
- Masterplan nr 1. and 2. from 1996 and 1999 had 15.000 inhabitants 15.000 workplaces
- In 2019 the peninsula had 7 500 inhabitants and 25 000 workplaces
- Goals for the new masterplan is to:
 - Make the metro feasible
 - Make Fornebu into a town the size of Lillehammer with 25.000 inhabitants
- Nature
- Mixed spaces
- Avenue?



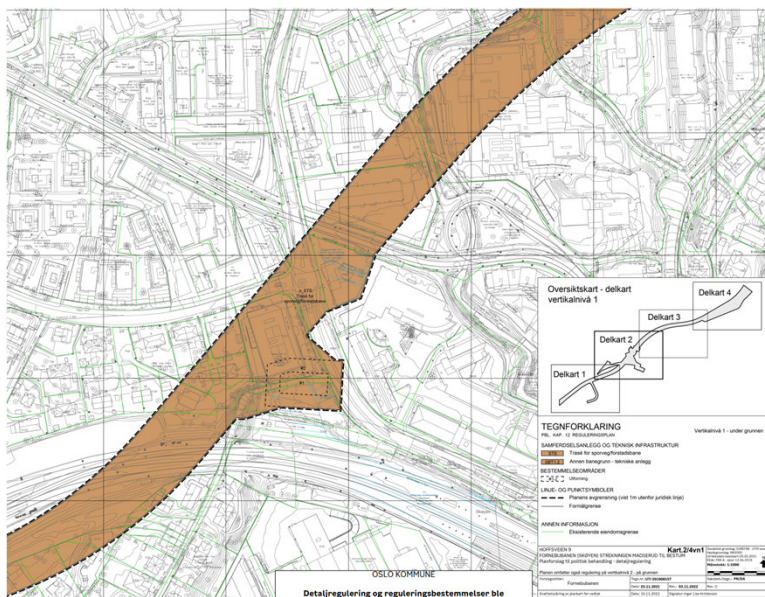
Champs Elysee,



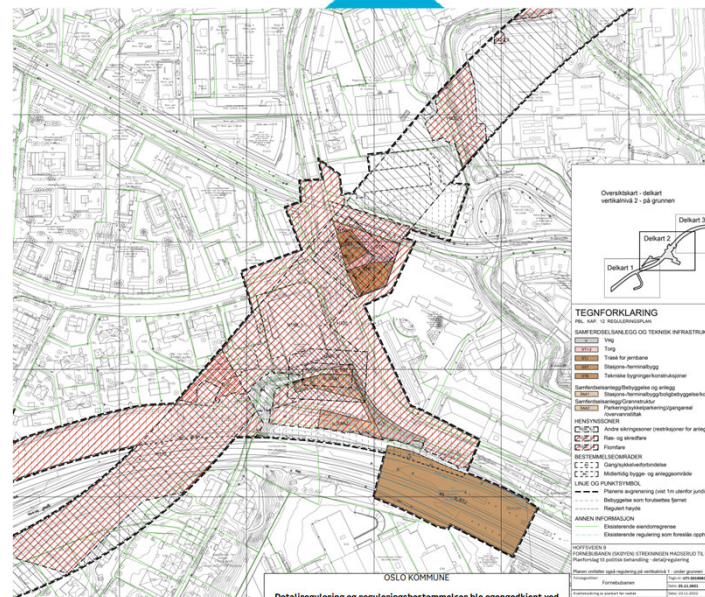
- It was a major focus on **quick clay** in Norway in 2020
- All physical planning had to have special focus on it



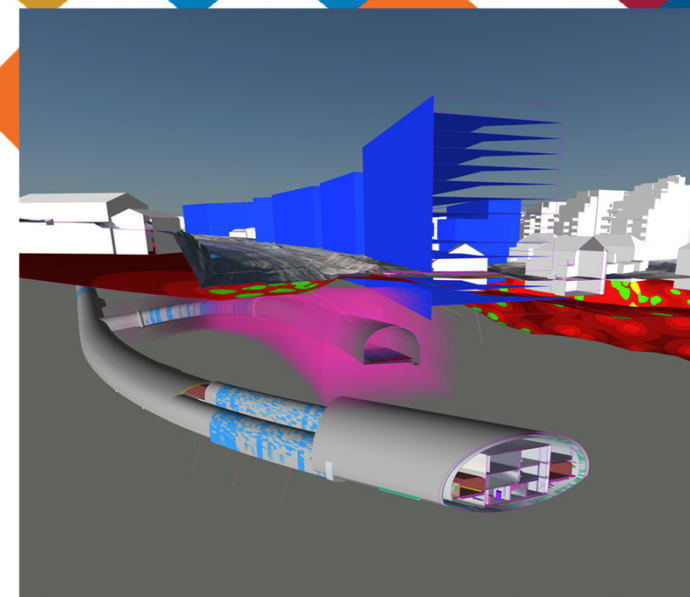
- Lack of 3D zoning plan
Property is 3D – zoning plans are 2D (levels)



■ Zoning plan level 1



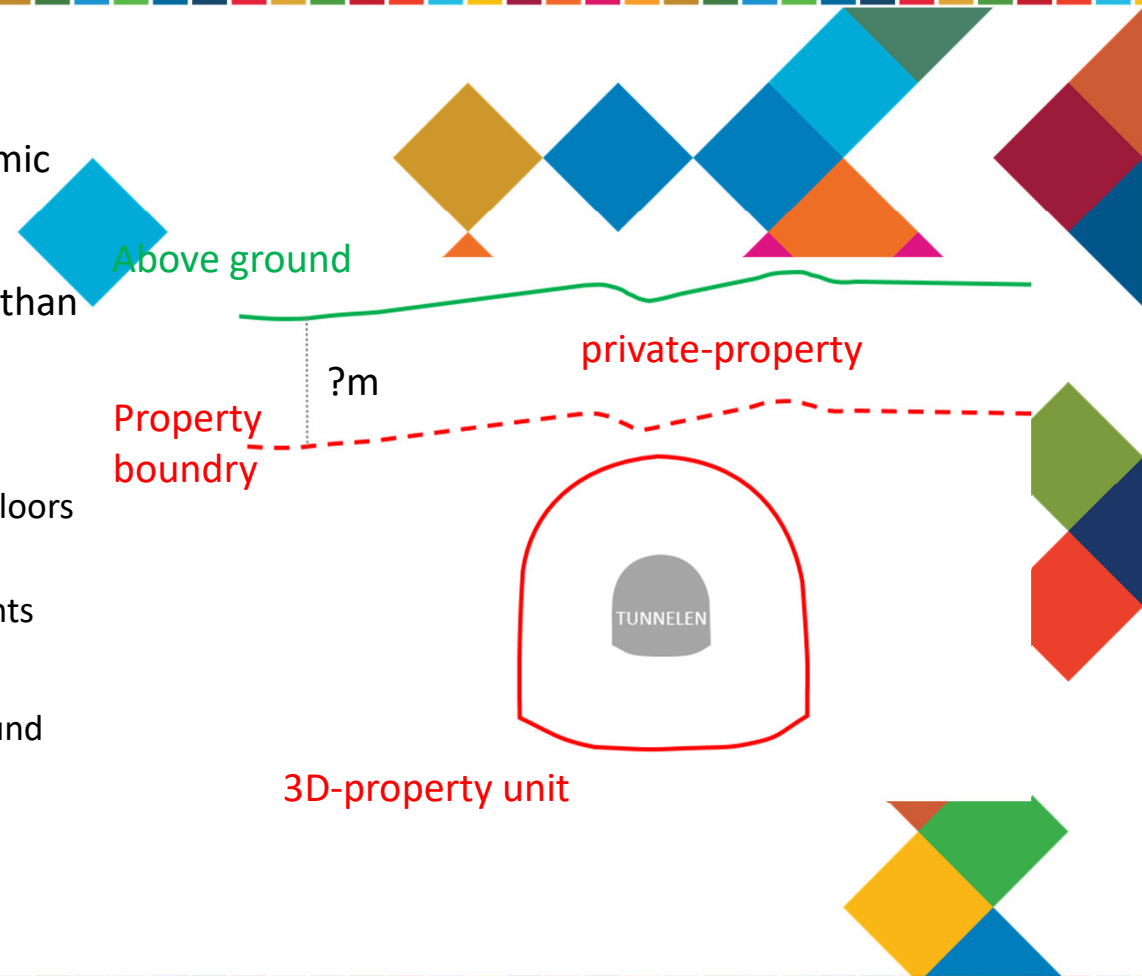
■ Zoning plan level 2



■ 3D-property-unit

5 - Who owns the underground?

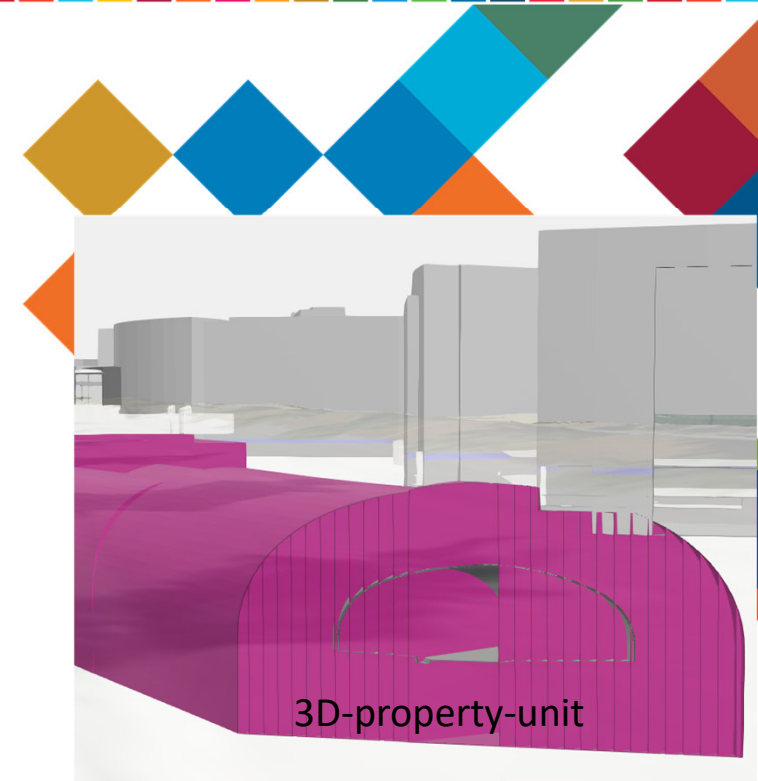
- In Norway you own as far down as you would have economic interests
- We've made assessments that property rights extend less than 10 meters down
- Reasoning:
 - 2018: Only 19 buildings in the capital region had 4 basement floors or more
 - Except the National Archives, all others were parking basements
 - Parking basements have low ceilings - 3 meters high?
 - Conclusion: ownership extends less than 10 meters underground since more than 3 basement floors are rare



95 properties in “owned underground”

Properties where our acquisition “collides” with the landowners’ property rights

- The properties are classified based on our definitions of property rights (<10 m) , as well as our definition of our own need for property (the volume of the 3D-property-unit).
- Our acceptance that a property is affected does not necessarily mean they have an economic loss and a right to receive compensation.
- We are awaiting arbitration on several properties





Land acquisition database with GIS-map

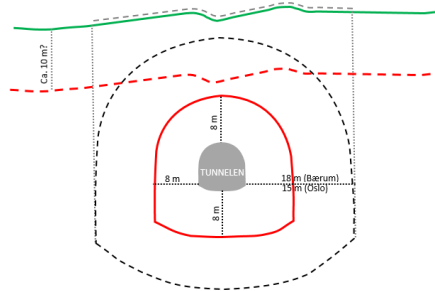
- Records
- Communication with landowners
- Communication with construction managers

550 properties

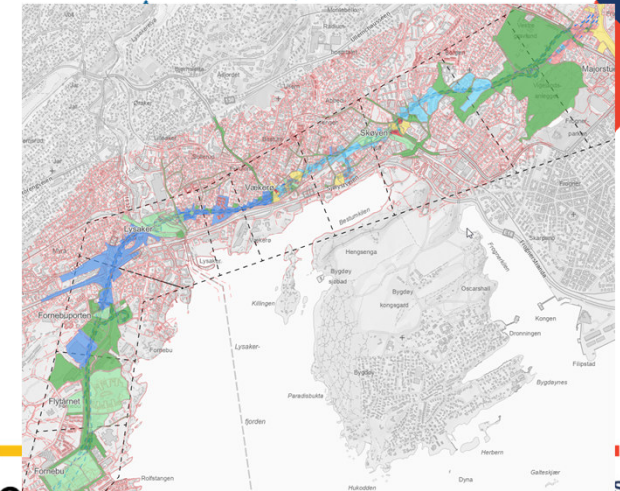
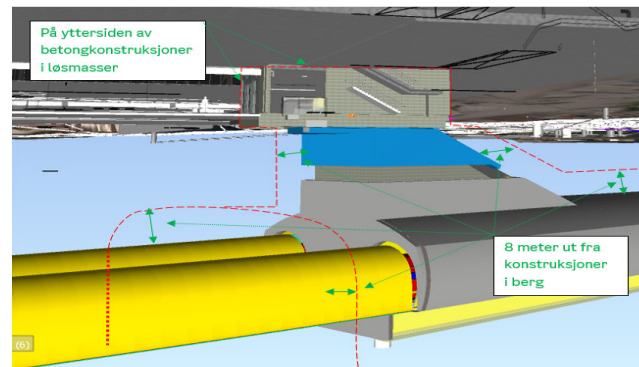
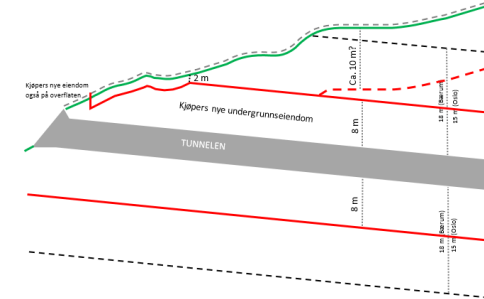
- 140 affected above ground
- 95 affected underground
- 225 classified by us as “not owned”
- 15 have energy wells
- 40 are affected by **zones requiring special consideration** (not considered a part)
- The rest are neighbors/not affected

TEGNFORKLARING
 — Terrengoverflaten
 — Eiendomsgrænse for anleggseiendommen
 — Eiendomsgrænse for grunneiendommen?
 - - Hensynssoneavgrensning
 - - Hensynssonen «smittet av» på overflaten

TVÆRSNITT



LENGDESNIITT



The most relevant SDGs related to the presentation and theme of this session

1st relevant
SDG

9 INDUSTRY, INNOVATION
AND INFRASTRUCTURE



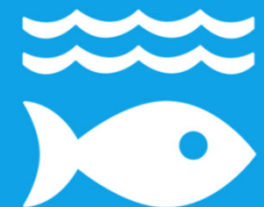
2nd relevant
SDG

11 SUSTAINABLE CITIES
AND COMMUNITIES



3rd relevant
SDG

14 LIFE
BELOW WATER



**SUSTAINABLE
DEVELOPMENT GOALS**

International Federation of Surveyors supports the
Sustainable Development Goals



Freshwater pearl mussel (*Margaritifera margaritifera*)





**WORKING
WEEK 2025**

AND

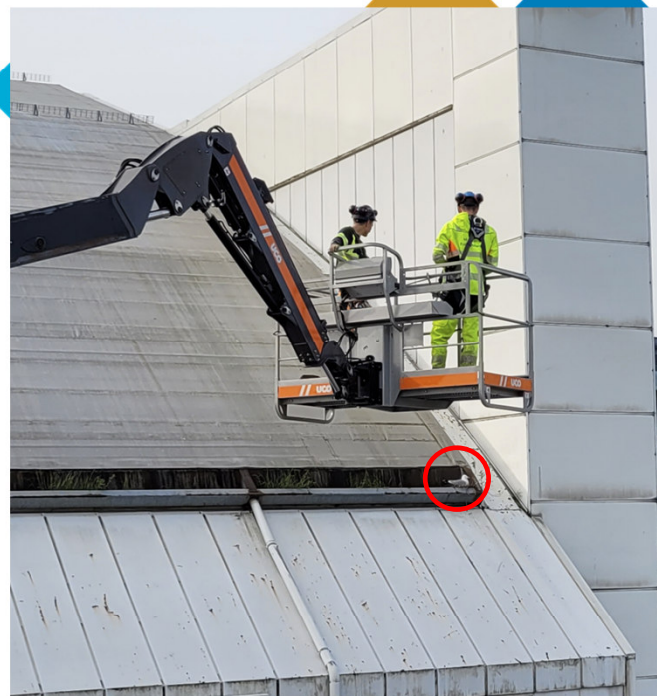
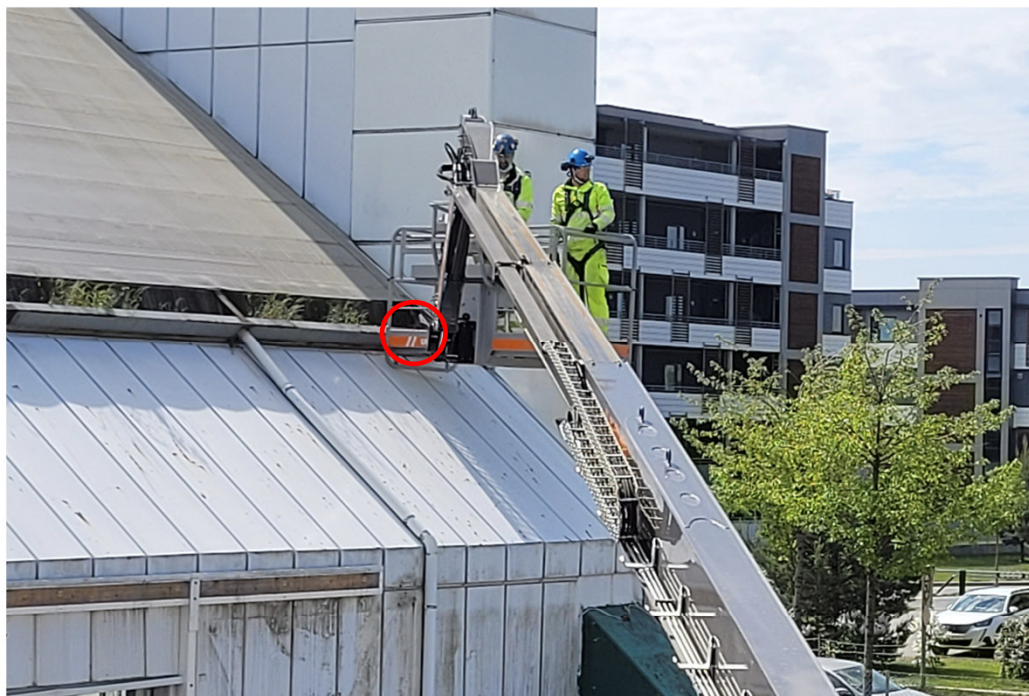
Locate25 | **G**
THE NATIONAL GEOSPATIAL CONFERENCE

Collaboration, Innovation and Resilience:
Championing a Digital Generation



Geospatial
Council of Australia

Brisbane, Australia 6–10 April



ORGANISED BY



Geospatial
Council of Australia

PLATINUM SPONSORS



CHCNAV





**WORKING
WEEK 2025**

AND

Locate25 
THE NATIONAL GEOSPATIAL CONFERENCE

Collaboration, Innovation and Resilience:
Championing a Digital Generation



Geospatial
Council of Australia

Brisbane, Australia 6–10 April



Yes?



ORGANISED BY



Geospatial
Council of Australia

PLATINUM SPONSORS



CHCNAV





**WORKING
WEEK 2025**

AND

Locate25 | **G**
THE NATIONAL GEOSPATIAL CONFERENCE

Collaboration, Innovation and Resilience:
Championing a Digital Generation



Geospatial
Council of Australia

Brisbane, Australia 6–10 April

STEP 1: SELECT HERE THE THREE MOST RELEVANT SDGs
STEP 2: COPY THE SDG INTO PREVIOUS SLIDE



ORGANISED BY



Geospatial
Council of Australia

PLATINUM SPONSORS



CHCNAV

