



Collaboration, Innovation and Resilience: Championing a Digital Generation

Brisbane, Australia 6–10 April

How ready are Generative AI agents for geospatial tasks?

AI is making Brisbane smarter—helping with flood prediction, urban growth, and sometimes deciding South Bank’s artificial beach is an actual coastline. It’s revolutionising mapping, but human sanity checks are still required.

Chris Landvogt
Sector Lead – Solutions Engineering – Esri Australia

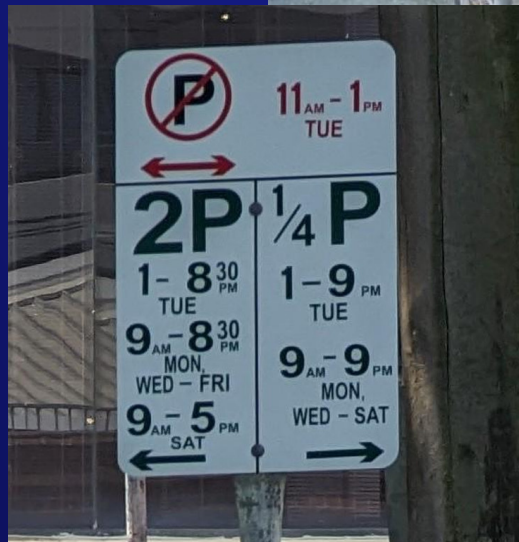


PLATINUM SPONSORS



The Geospatial Industry: No Stranger to Adapting to New Technologies

- Theodolite/EDM
 - Aerial/Satellite Photography
 - GIS
 - GPS/GNSS
 - LIDAR
 - AI



Street Sign Detector

Photograph the street sign

Drop image here or select image



Drop image here or select image

Submit

Powered by ArcGIS Survey123



Add



Edit



Appearance



Options

Survey title not set

Description content for the survey

Please drag from or press on the right panel to add your first question.

Submit

Powered by ArcGIS Survey123

Text, number, date, and time



Singleline text



Multiline text



Number



Slider



Date



Time



Date and time



Email



Website



Barcode

Choice



Single select



Multiple select



Single select grid



Dropdown



Likert scale



Rating



Ranking

Location



Map



Address



Location list

Saved

Preview

Publish



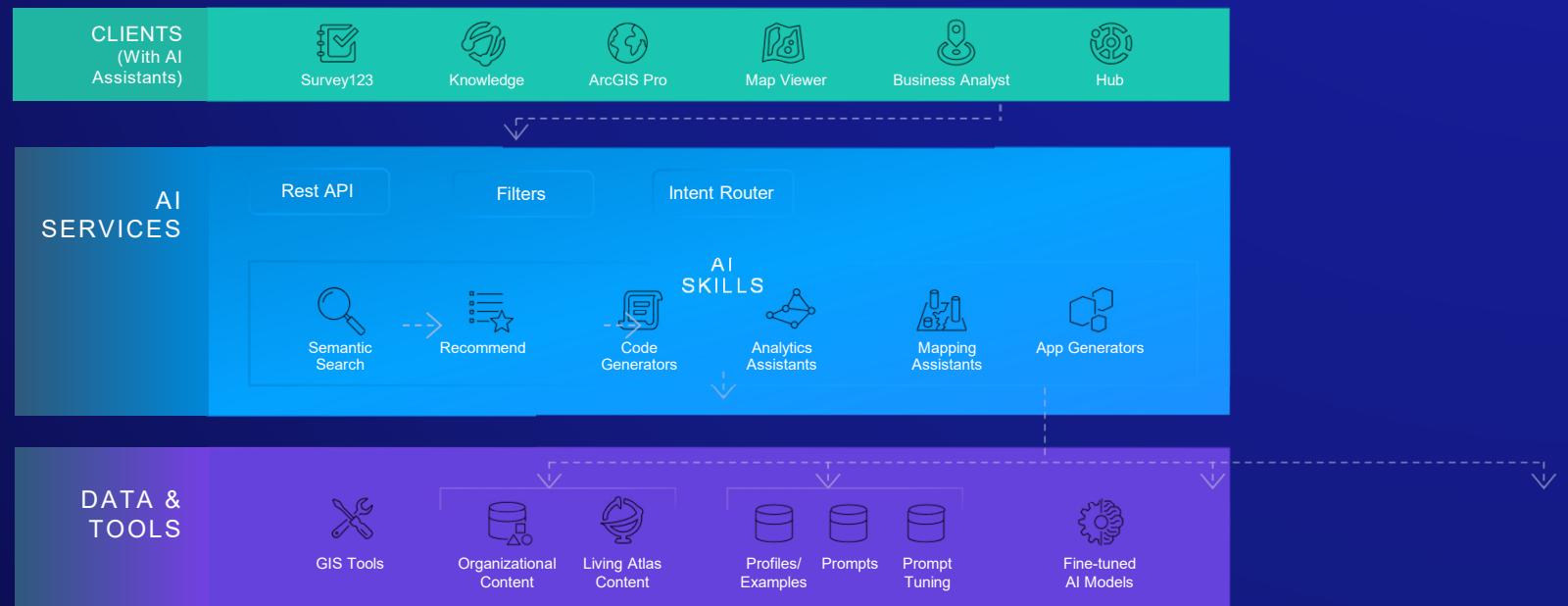
Survey123 assistant

BETA

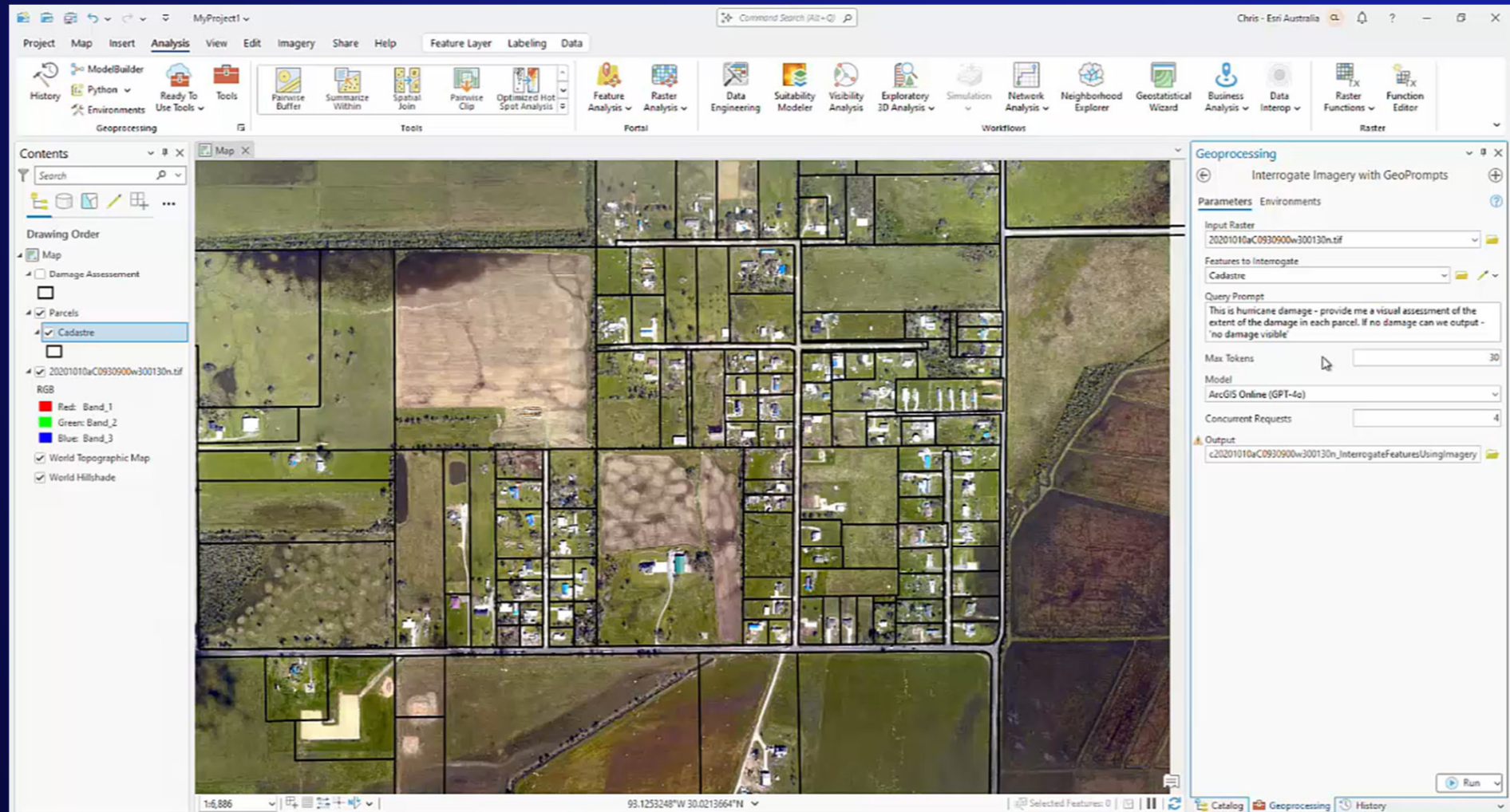
The most valuable data are behind firewalls and not in
open and public domains

The future of useful AI is tightly coupled with Enterprise GIS

- Delivers Authoritative, Trusted Data Sources
- Seamlessly Integrates with AI
- Enables Data Review and Workflow Orchestration
- Offers Scalability for Growing Needs
- Fosters Collaboration Across Teams

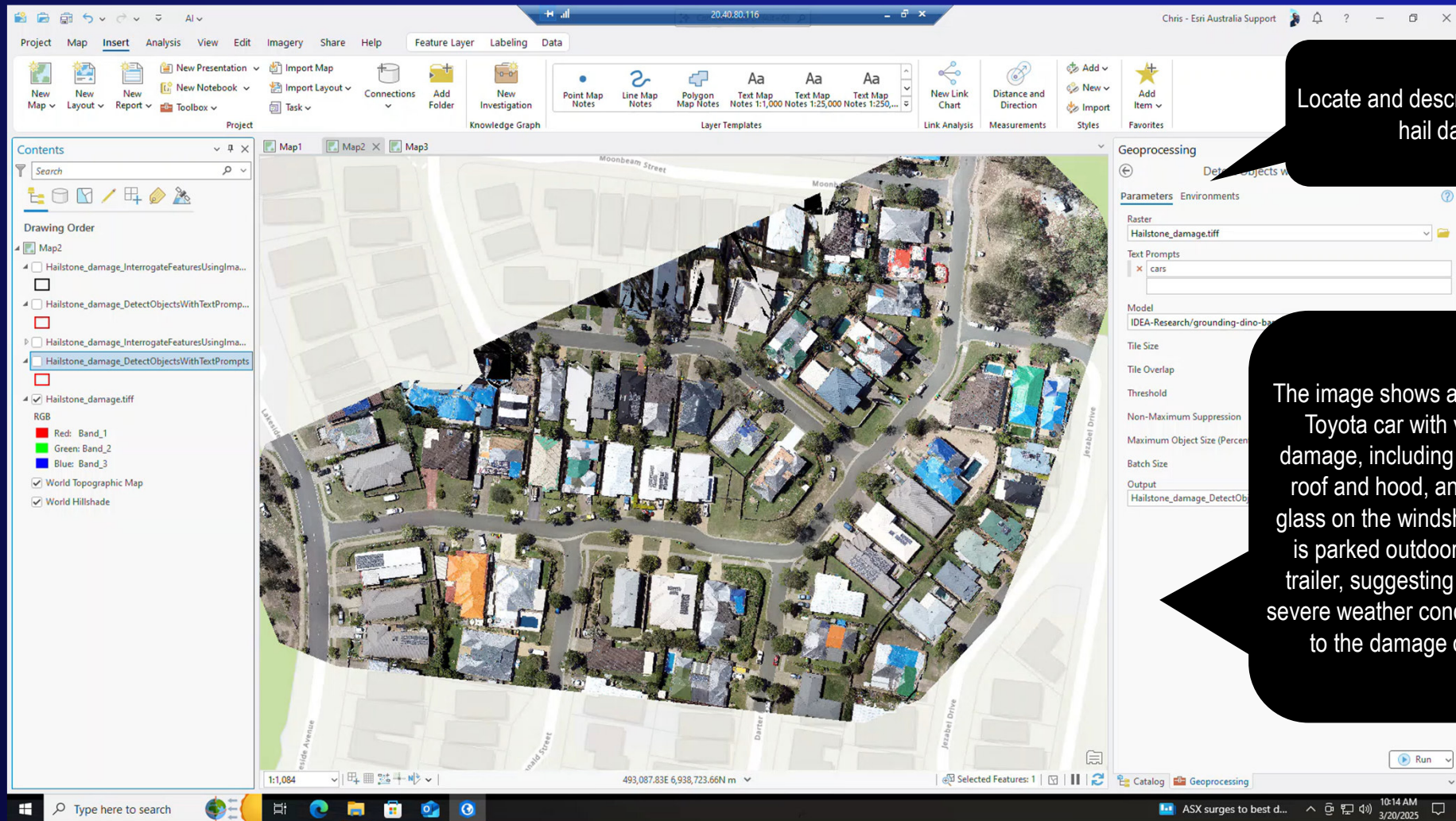


Where are we at with AI? Where are we going?



Spatially accurate cadastre + GPT-4o

Where are we at with AI? Where are we going?



Locate and describe the cars with hail damage

The image shows a dark-colored Toyota car with visible hail damage, including dents on the roof and hood, and shattered glass on the windshield. The car is parked outdoors, next to a trailer, suggesting exposure to severe weather conditions leading to the damage observed.

GroundingDino + GPT-4o

Where are we at with AI? Where are we going?

The screenshot displays the City of Sydney Open Data portal. At the top, the header includes the City of Sydney logo, navigation links (Home, Explore maps, Access open data, Disclaimer), a search bar, and a 'Sign In' link. Below the header, a search bar with the text 'Search' is visible. The main content area shows a list of datasets filtered by 'Type: Feature Service'. The left sidebar contains a 'Filters' section with a 'Reset' button, a 'Location' map, and a 'Type' filter. The 'Location' map shows a map of Sydney with a search bar and a 'Filter as map moves' checkbox. The 'Type' filter shows 'Feature Service (101)' selected, with other options 'Web Mapping Application (46)' and 'Web Experience (5)'. The main list displays three datasets, all titled '2007 Floor space and employment survey'.

City of Sydney Home Explore maps Access open data Disclaimer

Search Search

All (157) Maps (56) Data (101) Documents (0)

Filters Reset 1 - 12 of 101 Title

Type: Feature Service

Location Find address or place Results: 101 Filter as map moves

Type Filter options

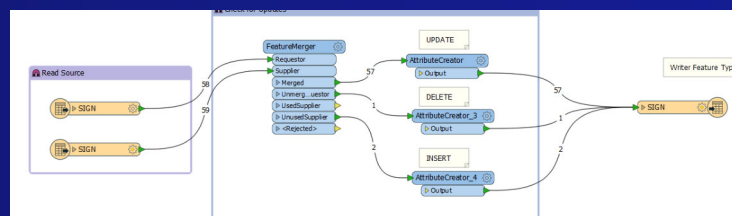
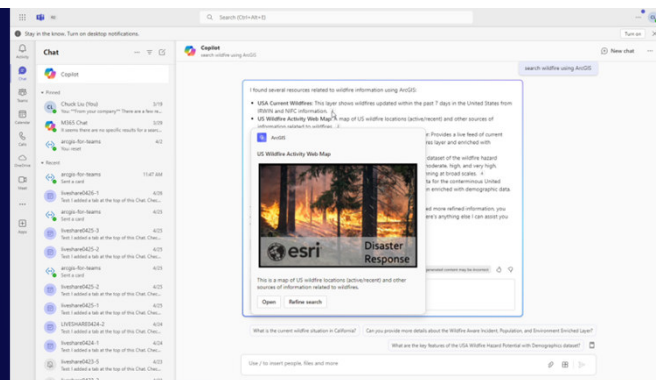
- ☒ Feature Service (101)
- ☐ Web Mapping Application (46)
- ☐ Web Experience (5)

Dataset
2007 Floor space and employment survey block data
City of Sydney
Data collected from the 2007 Floor Space and Employment survey showing employment, internal floor area and number of businesses by block in the LGA
Type: Feature Service Date updated: 1/17/2023
Tags: City of Sydney, FES, floorspace, employment, surv... Date created: 3/6/2019

Dataset
2007 Floor space and employment survey employment zone data
City of Sydney
Data collected from the 2007 Floor space and employment survey. Showing employment, internal floor area and number of businesses by employment zone in the Local Government Area
Type: Feature Service Date updated: 1/17/2023
Tags: City of Sydney, FES, floorspace, employment, com... Date created: 3/20/2019

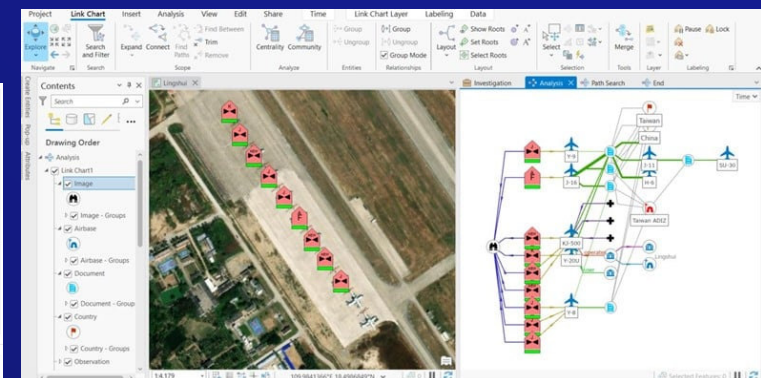
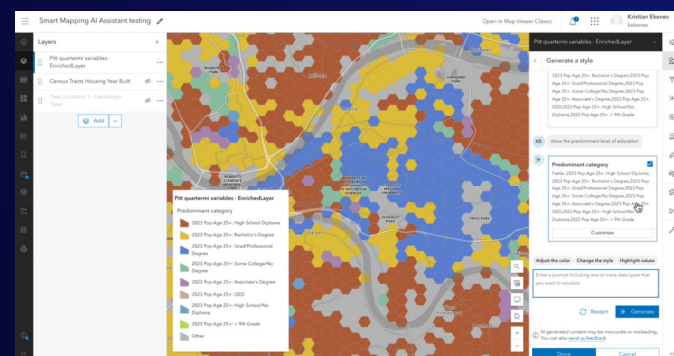
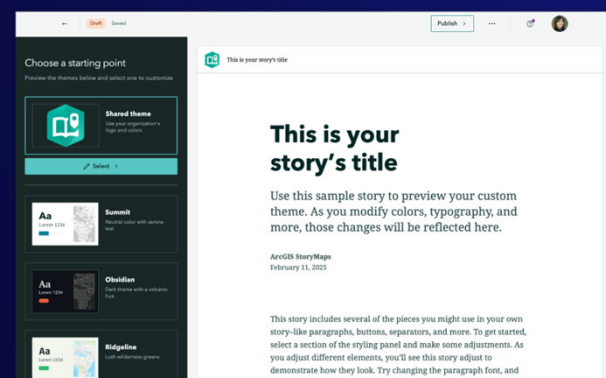
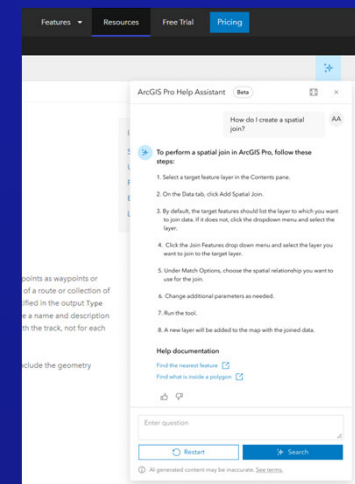
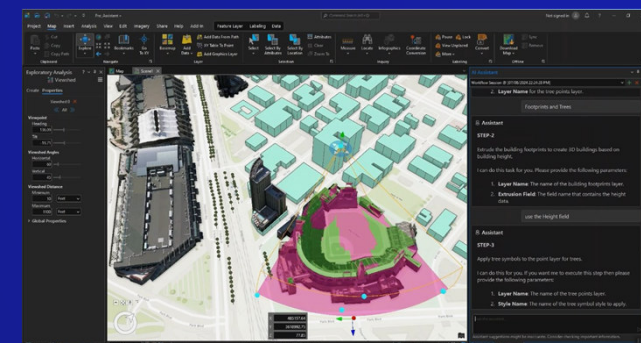
Dataset
2012 Floor space and employment survey block data
City of Sydney

ArcGIS Hub + OpenAI



What's coming...

- Code assistants in ArcGIS Pro - SQL, ArcPy, Arcade
- Documentation assistants
- Metadata assistants
- ArcGIS Workflow Manager
- ArcGIS Knowledge - Cypher
- ArcGIS Data Interoperability – SQL, RegEX, Python
- Web Map style/query assistant
- ArcGIS for Teams
- ArcGIS StoryMaps





**SUSTAINABLE
DEVELOPMENT GOALS**

International Federation of Surveyors supports the
Sustainable Development Goals

AI is ready to solve Geospatial Problems, but...