



Locate25 | 
THE NATIONAL GEOSPATIAL CONFERENCE

Collaboration, Innovation and Resilience:
Championing a Digital Generation

Presented at the FIG Working Week 2025,
6-10 April 2025 in Brisbane, Australia
 **Geospatial**
Council of Australia
Brisbane, Australia 6-10 April



The surveyor and the trajectory of land sobriety in France **Episode 1**

Towards a Comprehensive Legal and Practical Framework
for Soil Management

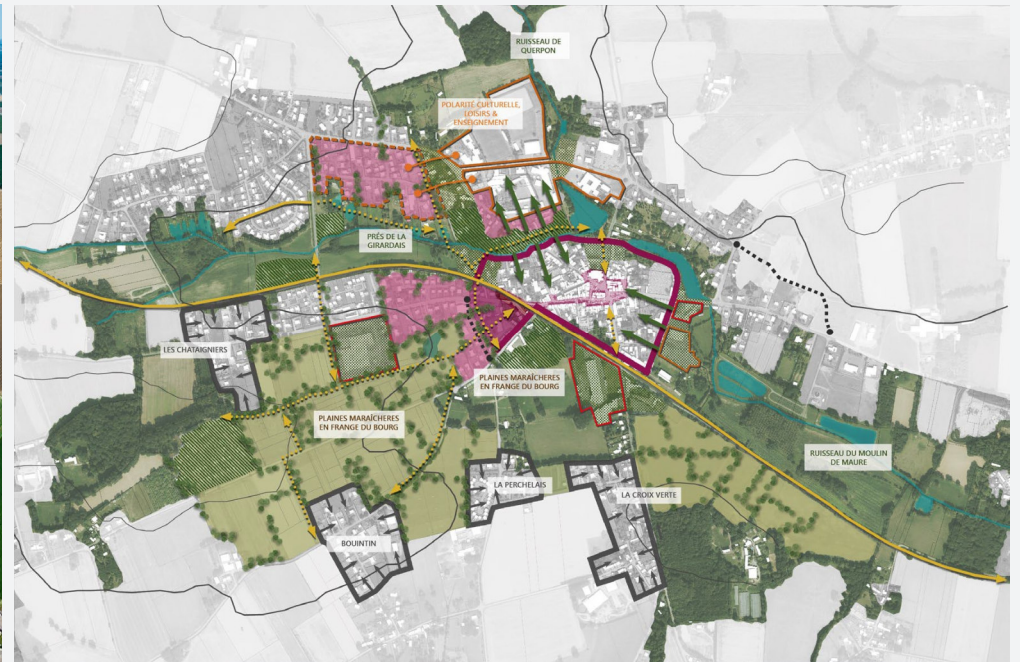
ALAJOUANINE Audrey, OGE-France



GÉOMÈTRE-EXPERT
GARANT D'UN CADRE DE VIE DURABLE

COMBATING URBAN SPRAWL AND THE EFFECTS OF CLIMATE CHANGE

THE EMERGENCE OF NATIONAL POLICIES AT EUROPEAN LEVEL



LAND SOBRIETY (or Zero Net Land Take), a National Objective

- **Law « Grenelle 2 »
17th July 2010 :
Reducing space
consumption**

Obligation to carry out
an analysis of previous
space consumption

- **Law «ALUR» du 24th
March 2014: optimise
construction within
already urbanised
areas**

Obligation to carry out
a densification study of
urbanised areas

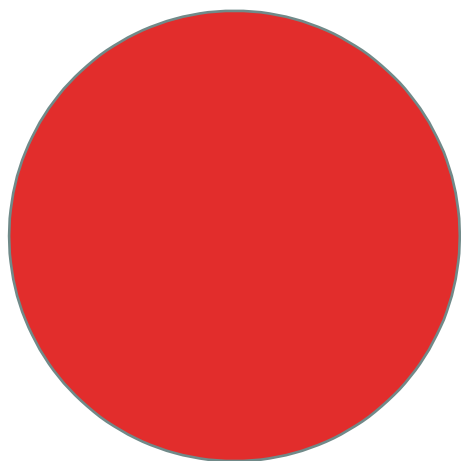
- **Law « Climate & Resilience » 22nd
August 2021: combating climate
change and building resilience to its
effects**

In order to achieve the national objective
of no net artificialisation of land by 2050,
the rate of artificialisation of land must be
halved by 2030, taking into account the
total consumption of space observed
between 2010 and 2021. This reduction in
artificialisation should then be halved each
decade until 2050.



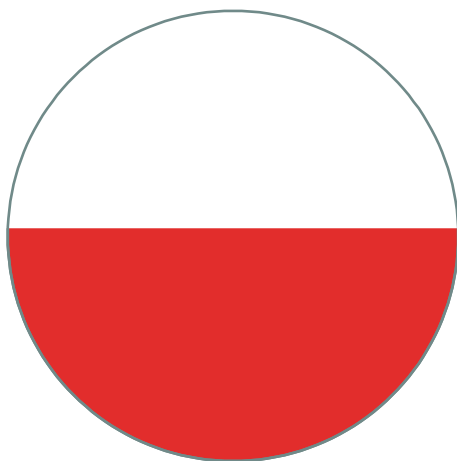
TIMELINES OF LAND SOBRIETY

2021



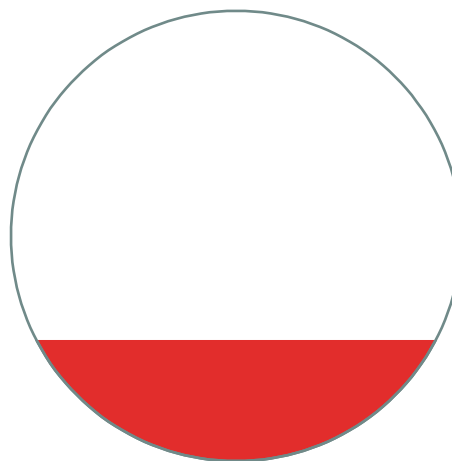
HALVE THE **CONSUMPTION**
OF NATURAL,
AGRICULTURAL AND
FOREST AREAS OVER THE
LAST 10 YEARS

2031



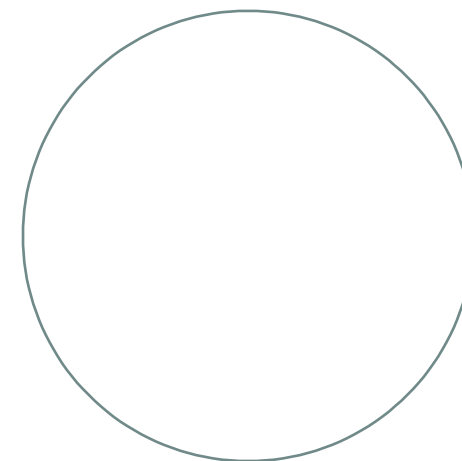
DEFINE A TARGET FOR
REDUCING THE RATE OF
ARTIFICIALISATION IN 10-
YEAR INCREMENTS

2040



ACHIEVE THE OBJECTIVE OF
ZERO NET
ARTIFICIALISATION /
LAND SOBRIETY

2050



DEFINITIONS

SPACE CONSUMPTION

the consumption of natural, agricultural and forestry areas is understood to mean the actual creation or extension of urbanised areas in the area concerned

ARTIFICIALISATION

the lasting alteration of all or part of a soil's ecological functions, in particular its biological, hydric and climatic functions, as well as its agronomic potential, as a result of its occupation or use.

Space consumption ?



Artificialisation ?



Space consumption ?



Artificialisation ?



DEFINITIONS

RENATURATION

Soil renaturation, or desartificialisation, consists of actions or operations to restore or improve the functionality of a soil, with the effect of transforming it.

NET ARTIFICIALISATION

Net Artificialisation is defined as the balance of artificialisation and renaturation recorded over a given area and period.

ARTIFICIALISATION



+

RENATURATION



= **Land Sobriety**

**PROPOSALS FOR A HUMANLY ACCEPTABLE
TRAJECTORY OF LAND SOBRIETY**



GÉOMÈTRE-EXPERT
GARANT D'UN CADRE DE VIE DURABLE

The surveyor and the trajectory of **land sobriety in France**

METHODOLOGY

Episode 1

Towards a Comprehensive Legal and Practical Framework for Soil Management

Episode 2

Integrating Soil Management into Sustainable Land Use Planning

Episode 3

Enhancing Urban Planning through Adaptive and Inclusive Strategies

EXAMPLES

Episode 4

A Practical Case Study of Urban Renaturation and De-artificialization

Episode 5

A Practical Case Study of Urban Renewal

The background of the slide is a photograph showing two hands planting a small green seedling into dark, rich soil. The hands are positioned on either side of the seedling, with fingers gently holding the soil around its base. The soil has a crumbly, textured appearance. The overall scene conveys a sense of environmental care and growth.

Defining Soil Legally

Submit for debate a legal definition of soil in accordance with the provisions of the Environmental Code, as follows:

A living soil can provide a large number of ecosystem services, including :

- **A habitat function:** the soil's capacity to act as a habitat for living organisms and to contribute to the conservation of biodiversity.
- **A regulating function:** the soil's ability to regulate substance and energy cycles.
- **A production function:** the soil's capacity to produce biomass.
- **A reservoir function:** the soil's capacity to store raw materials (water, geothermal energy, carbon).
- **A support function:** the soil's ability to serve as a foundation for development and construction.
- **An archiving function:** the soil's capacity to store information and materials for future use.



Enhancing Soil Knowledge

Implement a global approach and a methodology for understanding the soil, its predicted changes and its capacity to evolve.

- Provide local authorities and contracting authorities with tool(s) for multi multi-criteria evaluation of the quality of the soils
- To be able to assess the functions of habitat regulation, production and source of raw materials.
- Make a prior inventory of existing initiatives underway and take advantage of this comprehensive global approach to on a national scale
- Set up a simple procedure procedure for organising information gathering and soil knowledge.
- Supply and make available sources of information

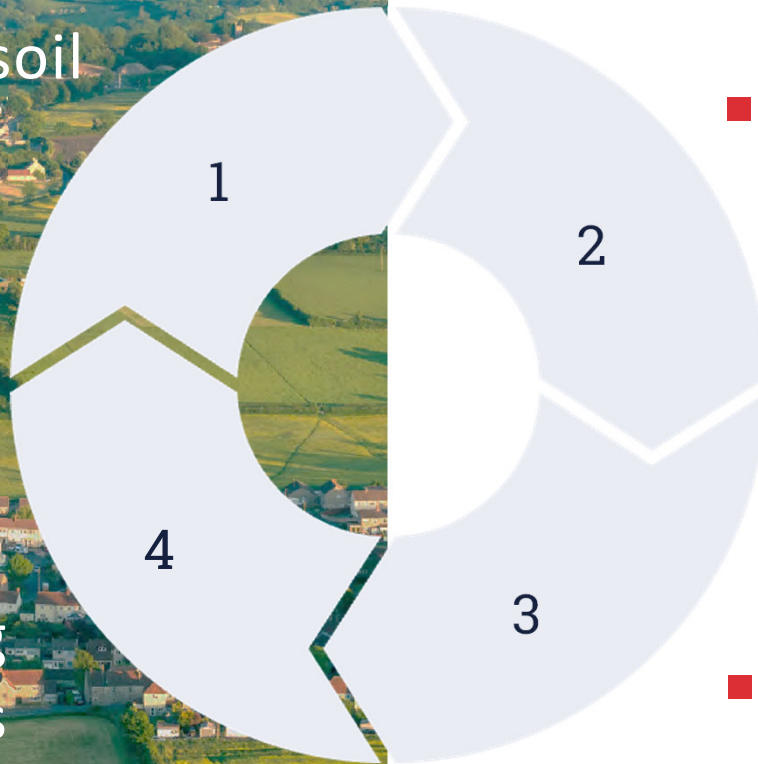
Towards sustainable soil management

■ A legal definition of soil

■ Data centralization

Ensuring sustainable living environments

■ Improving planning



**PROPOSALS FOR A HUMANLY ACCEPTABLE
TRAJECTORY OF LAND SOBRIETY**



GÉOMÈTRE-EXPERT
GARANT D'UN CADRE DE VIE DURABLE

Thank You For Your Attention



METHODOLOGY

Episode 1

**Towards a Comprehensive Legal and
Practical Framework for Soil Management**

Episode 2

**Integrating Soil Management into
Sustainable Land Use Planning**

Episode 3

**Enhancing Urban Planning through
Adaptive and Inclusive Strategies**

EXAMPLES

Episode 4

**A Practical Case Study of Urban
Renaturation and De-artificialization**

Episode 5

A Practical Case Study of Urban Renewal