



Collaboration, Innovation and Resilience: Championing a Digital Generation

Brisbane, Australia 6-10 April

# Evolution in State Regulation and Standard Setting of the Land Surveying Profession for the Modern World

Charisse GRIFFITH-CHARLES, and Dexter DAVIS, Trinidad and Tobago



PLATINUM SPONSORS



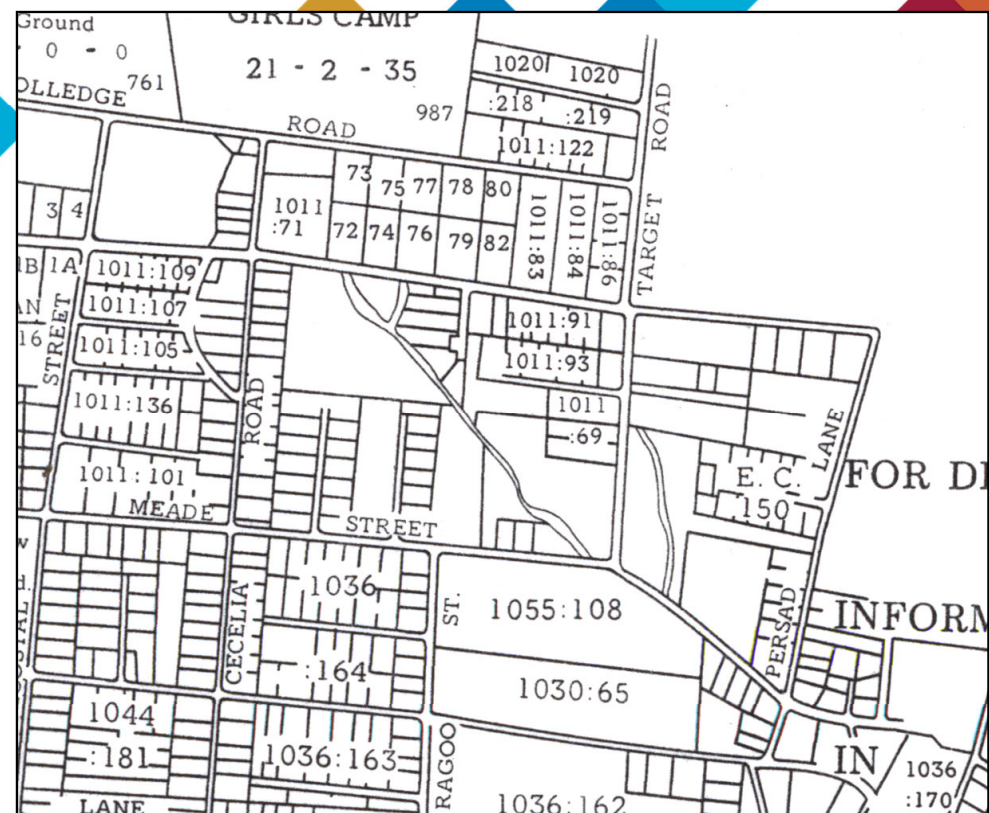
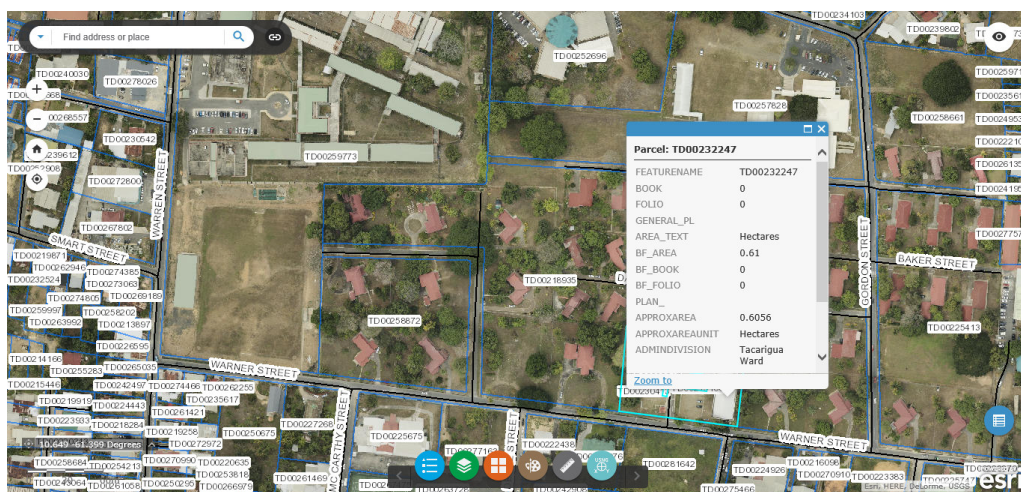
## History of professionals

- One from one of the learned professions - traditionally believed to require advanced learning and high principles, theology (divinity), medicine, law - dedicated to selflessly helping society, with little thought for the financial gain
- One who studied under professionals, then followed a practical apprenticeship, again under professional practitioners until being certified by the professional body
- one who went through the process of attaining an undergraduate qualification through deep theoretical study followed by practical training under the tutorship of an experienced professional, and then was assessed for certification and registration as a full professional.



## Cadastral Surveying Distinction

- Protecting the public
- Protecting the land and land resource interests of the state



## Cadastral Surveying Distinction

State	Board	Date established	Practice registered
California (all other states in the USA)	California Board for Professional Engineers, Land Surveyors, and Geologists	1891	Land surveyors from 1891, civil engineers and others from 1929
EU Countries	States	Regulations re-established in 1957 under new EU regulations.	Cadastral surveying
Australia – New South Wales	Board of Survey and Spatial Information (BOSSI)	1837	Cadastral Surveyors, Mining Surveyors
Australia – Queensland	Surveyors Board of Queensland	2003	cadastral, engineering, mining and consulting
Trinidad and Tobago	Land Survey Board of Trinidad and Tobago (LSBTT)	1922, 1996	Cadastral Surveyors, Land Surveyors (Engineering Surveying), Hydrographic Surveyors, (also listed in the legislation but never registered so far: cadastral and land management surveyor, photogrammetrist, geodesist, or cartographer or as may be prescribed by the Board;)

- Perception may be negative if it is believed that it is driven by protectionism

## Private Professional Associations Performing Regulation

Private Professional Associations	Practice Certified But not Legally Recognised
<b>RICS</b>	various disciplines within the land, property, infrastructure, and construction industries
<b>SSSI, GSA</b>	Engineering Surveying
<b>Institute of Surveyors of Trinidad and Tobago</b>	Land Surveyors, Valuation Surveyors, Quantity Surveyors, Building Surveyors

- Recognition by society comes from visibility, history, infrastructure
- Perception may be negative if the belief is that it is driven by economics,



## For and Against Regulation

- Affects earning livelihood
- Difficult to police ethics
- Enforcement is costly for the organisation
- Registration is costly for the early professional
- Professional should have personal accountability
- Protects public
- Regulation by state entity is legal
- Regulation by private association is voluntary



## Transition Issues to First Registration

- Who assesses the first applicants?
- Must duplicate boards be established?
- What are the criteria for grandfather clauses?



## Conclusion

- Professional regulation is an expensive activity for the state so introduction should be driven by cost benefit
- Professional regulation for private associations is also expensive so needs critical mass of voluntary opt in
- Strict enforcement must be pursued to ensure integrity and confidence is maintained



## The most relevant SDGs related to the presentation and theme of this session

1st relevant  
SDG

**9** INDUSTRY, INNOVATION  
AND INFRASTRUCTURE



2nd relevant  
SDG

**11** SUSTAINABLE CITIES  
AND COMMUNITIES



3rd relevant  
SDG

**12** RESPONSIBLE  
CONSUMPTION  
AND PRODUCTION



**SUSTAINABLE  
DEVELOPMENT GOALS**

International Federation of Surveyors supports the  
Sustainable Development Goals