



Collaboration, Innovation and Resilience: Championing a Digital Generation

Brisbane, Australia 6–10 April

Disruption & Land Administration

A new, tested, cost effective approach to land administration....

Brent Jones, PE, PLS

Esri

Presented at the FIG Working Week 2025
6-10 April 2025 in Brisbane, Australia



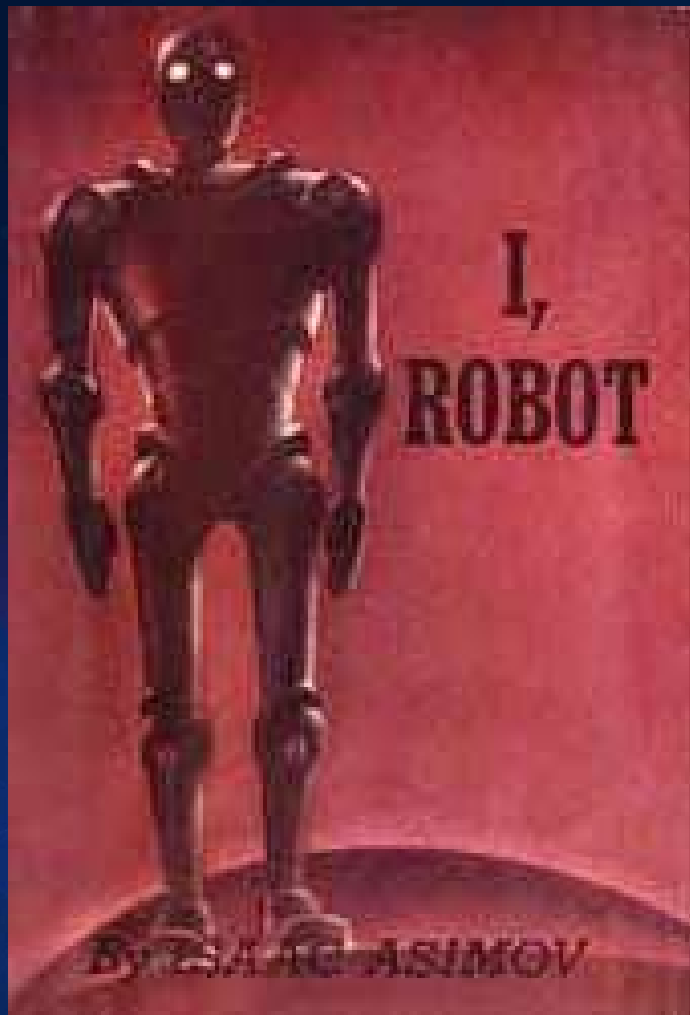
PLATINUM SPONSORS



What Does the Future Hold.....?

*The world is going change more in the next ten years
than the past 100 years combined.....*

Knightscope



World's Largest Media Company



- No Journalists
- No Content Producers
- No Photographers

World's Largest Hospitality Company



- No Rooms
- No Receptionists
- No Free Breakfast

World's Largest Transportation Company

The Uber logo is displayed in white text on a black rectangular background. The word "Uber" is written in a clean, sans-serif font. The background of the slide features a dark blue gradient with a faint, glowing grid pattern and a stylized blue globe at the bottom right.

- No Cars
- No Manufacturing
- No Repair Facilities

Disruption

dis·rup·tion

dis'rəpSH(ə)n/

noun

noun: **disruption**; plural noun: **disruptions**

disturbance or problems that interrupt an event, activity, or process



GNSS + App + Routing + Street Data +

Payment + Standards + Imagery + Cloud +

Idle Assets + Traffic Data + Security + Identity

+

The Uber logo is displayed in white text on a black rectangular background. The background of the entire slide features a dark blue, abstract design with a globe at the bottom, overlaid with a network of glowing lines and dots, and a pattern of hexagons on the left side.

Uber

Combining innovations power disruption....

....but complacency fuels it.....



Transformation

trans·for·ma·tion

tran(t)sfər'māSH(ə)n/

noun

noun: **transformation**; plural noun: **transformations**

a thorough or dramatic change in form or appearance



GIS is Disruptive and Transformative...

Integrating and Leveraging Many Innovations

Data Measurement

Lidar Images & Remote Sensing
Multi-Dimensional BIM Sensors & IoT
Real-Time Streaming Big Data
Unstructured
HD Mapping Crowdsourcing

Computing

Ultra-High Bandwidth AI & ML Mobile
Edge Devices Very Fast Processing Microservers
Cloud Distributed Interoperability & Standards
Social

Science

Modeling
Real-Time
Spatiotemporal Analytics Spatial
Open Science Data Science
Digital Exploration



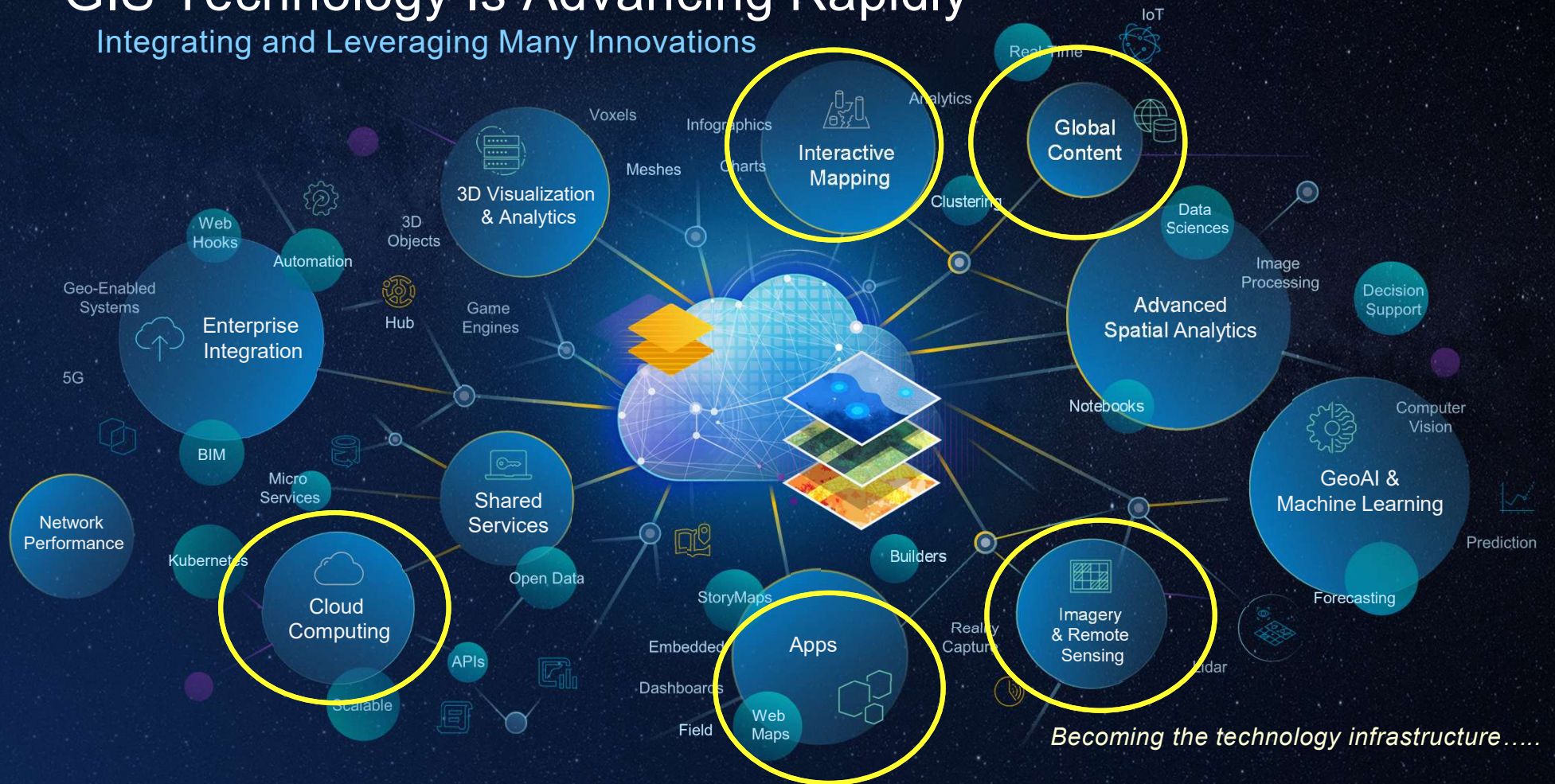
Distributed
... And
Interconnected

Configurable

Data
Web
Cloud
Mobile
Distributed

GIS Technology Is Advancing Rapidly

Integrating and Leveraging Many Innovations



Colombia

COTS Land Administration



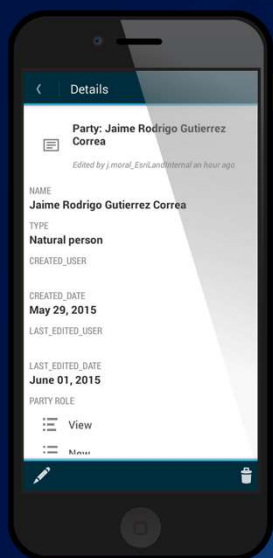
Peace process with FARC began 2012, Ratified 2016

- Population 48 Million (between Spain and S. Korea)
- Parcels 15 Million
 - Urban 11.6 Million
 - Rural 3.5 Million
- Area 25th 441,000 sq. mi. (between South Africa and Ethiopia)
- Population Density 105 per sq. mi. (~ Tennessee)

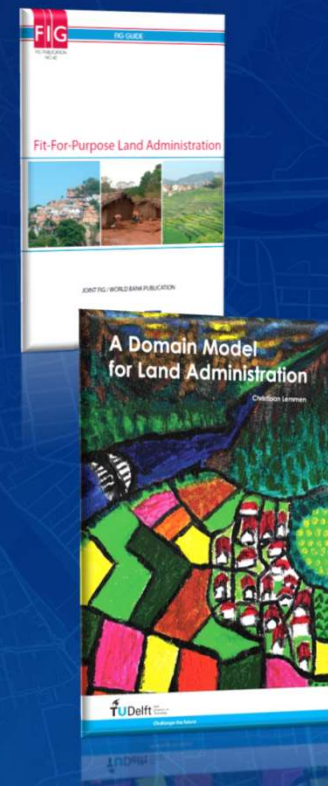
Cadastre is a Necessary Precondition to Sustainable Peace.....

Simple Data Collection

Use what we use everyday.....



- Fast-to-Implement
- Standards-based
- Low Cost
- High Accuracy
- No Software Development
- Secure
- Leverages External Data
- Uses Many Devices
- Future Proof
- Scalable
- Repeatable
- Works Disconnected



Leapfrog Land Administration



If I would have asked people what they wanted,
they would have said faster horses”

...Henry Ford

Collaborative

Partnering for the Future of Colombia

- Trimble
- IGAC – National Mapping Agency
- Kadaster International
- Esri
- Esri Colombia



Mobile



High Accuracy



Open Standards



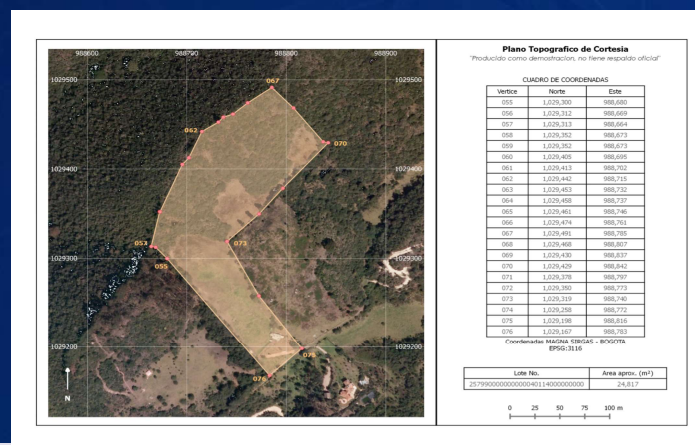
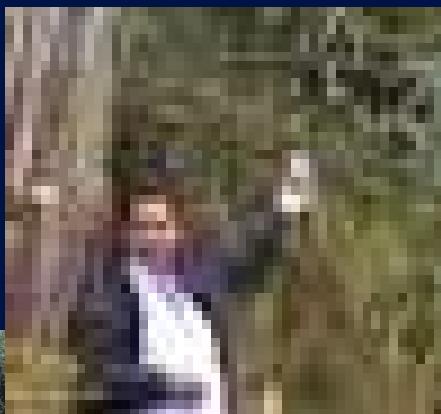
ISO 19152:2012
Geographic information -- Land Administration Domain Model (LADM)



Global Content



Cloud Operations



Fit-for-Purpose Land Administration



<http://go.esri.com/fit4purposekenya>

Community-based Solutions.....

Kenya

Citizen Assisted Surveying



<http://go.esri.com/fit4purposekenya>

Community Driven Solutions.....

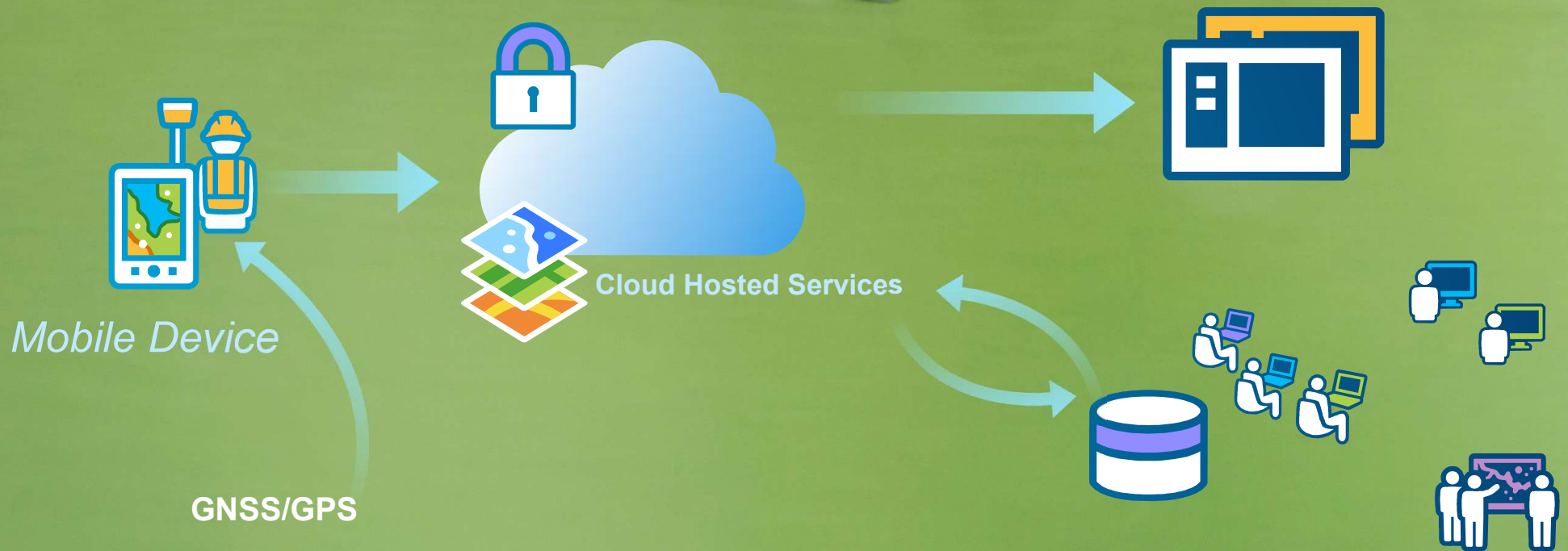
Kenya

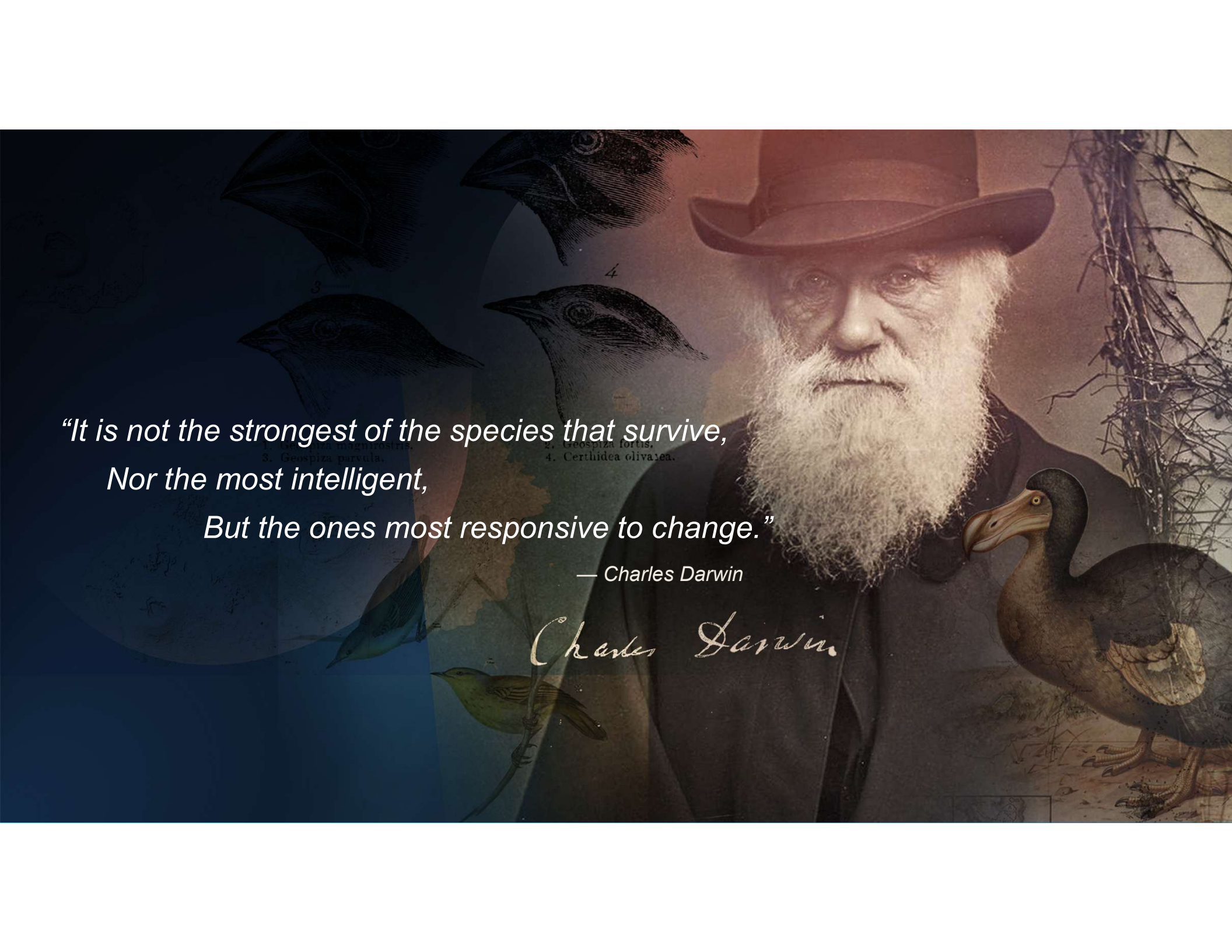
Community Adjudication



<http://go.esri.com/fit4purposekenya>

Community Driven Solutions.....





*"It is not the strongest of the species that survive,
Nor the most intelligent,
But the ones most responsive to change."*

— Charles Darwin

Charles Darwin.

The most relevant SDGs related to the presentation and theme of this session

1st relevant
SDG



2nd relevant
SDG



3rd relevant
SDG



**SUSTAINABLE
DEVELOPMENT GOALS**

International Federation of Surveyors supports the
Sustainable Development Goals



AND

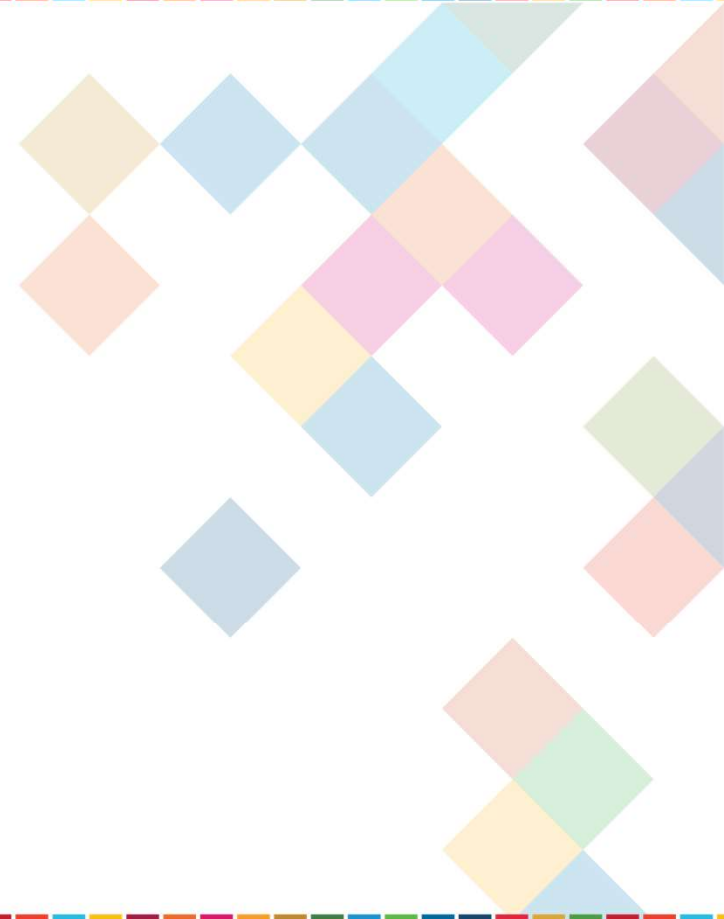
Locate25

THE NATIONAL GEOSPATIAL CONFERENCE

Collaboration, Innovation and Resilience:
Championing a Digital Generation



Brisbane, Australia 6–10 April



ORGANISED BY



PLATINUM SPONSORS



STEP 1: SELECT HERE THE THREE MOST RELEVANT SDGs
STEP 2: COPY THE SDG INTO PREVIOUS SLIDE

| | | | | | | | | |
|---|---|---|---|---|--|---|---|---|
| 1 NO POVERTY  | 2 ZERO HUNGER  | 3 GOOD HEALTH AND WELL-BEING  | 4 QUALITY EDUCATION  | 5 GENDER EQUALITY  | 6 CLEAN WATER AND SANITATION  | 7 AFFORDABLE AND CLEAN ENERGY  | 8 DECENT WORK AND ECONOMIC GROWTH  | 9 INDUSTRY, INNOVATION AND INFRASTRUCTURE  |
| 10 REDUCED INEQUALITIES  | 11 SUSTAINABLE CITIES AND COMMUNITIES  | 12 RESPONSIBLE CONSUMPTION AND PRODUCTION  | 13 CLIMATE ACTION  | 14 LIFE BELOW WATER  | 15 LIFE ON LAND  | 16 PEACE, JUSTICE AND STRONG INSTITUTIONS  | 17 PARTNERSHIPS FOR THE GOALS  | |