



Collaboration, Innovation and Resilience: Championing a Digital Generation

Brisbane, Australia 6-10 April

RETHINKING AND HUMANIZING SURVEYING

AN INTERDISCIPLINARY APPROACH FROM TECHNICAL EXPERTISE
TO SOCIAL-TECHNICAL RESPONSIBILITY FOR SUSTAINABLE
DEVELOPMENT AND SOCIAL JUSTICE.

PRESENTED BY: CISSY NAMUDDU SETTUMBA KIYAGA

PHD FELLOW, MPhil, MPAM, B.A

POLITICAL STUDIES AND POLITICAL ECONOMY

EMAIL: cissynkiyaga@gmail.com

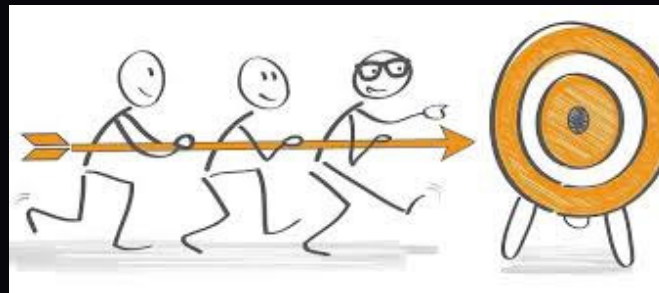


PLATINUM SPONSORS





Surveying profession is primarily perceived as a technical field yet with the modern world, it must adapt to complex challenges that require interdisciplinary approaches. This paper advocates for a paradigm shift from predominantly technical focus to a more holistic profession that includes social interaction, communication skills and being able to resolve disputes using a socially embedded approach. The growing global demand for land management in emerging and expanding markets necessitates that surveyors not only demonstrate technical expertise but also engage with communities in a manner that fosters trust and collaborative solutions.



THEORETICAL FRAMING



THEORIES

PROVIDE FRAMEWORK FOR UNDERSTANDING AND EXPLAINING CIRCUMSTANCES

The Theory of Anthropocene

Proposes that humanity's activities have become a dominant force on Earth, causing significant and lasting changes to the planet's geology and ecosystems, potentially warranting a new geological epoch

The theory highlights the scale of human activities, such as industrialization, resource extraction, and climate change, which have altered the Earth's climate, biodiversity, and ecosystems.

Karl Polany's theory of social embeddedness.

Using the theory to explore how the surveying profession can be framed as a socially interactive and sensitive to humanity and her environment. Polany argues that the economy is inherently part of society, not separate from it, and that economic activities are always embedded in social relationships and institutions, not just market forces.

LAND MANAGEMENT/ SOCIETY



TECHNOLOGY



SENSITIZATION



GENDER



DISPUTE
RESOLUTION



RESTORATION



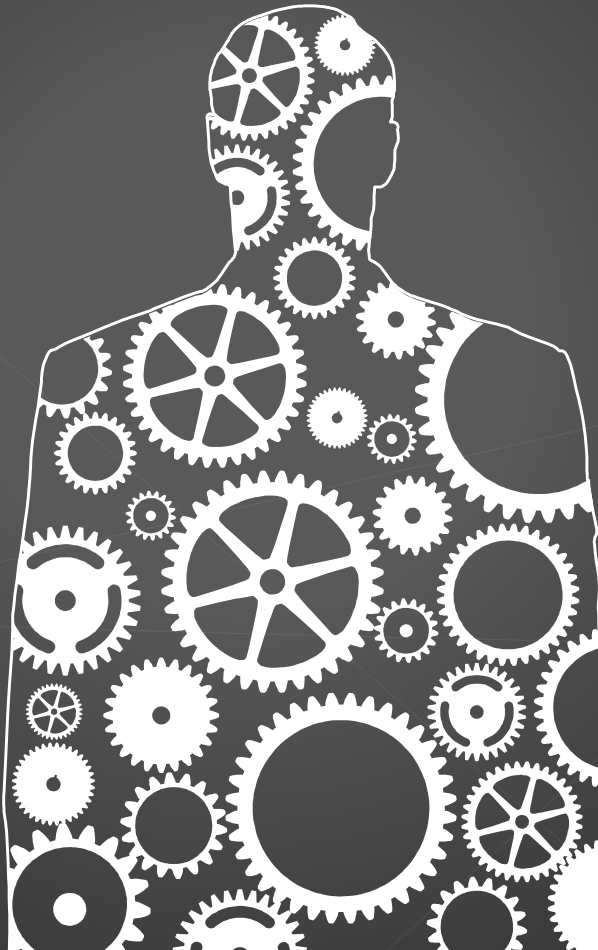
MARKETING



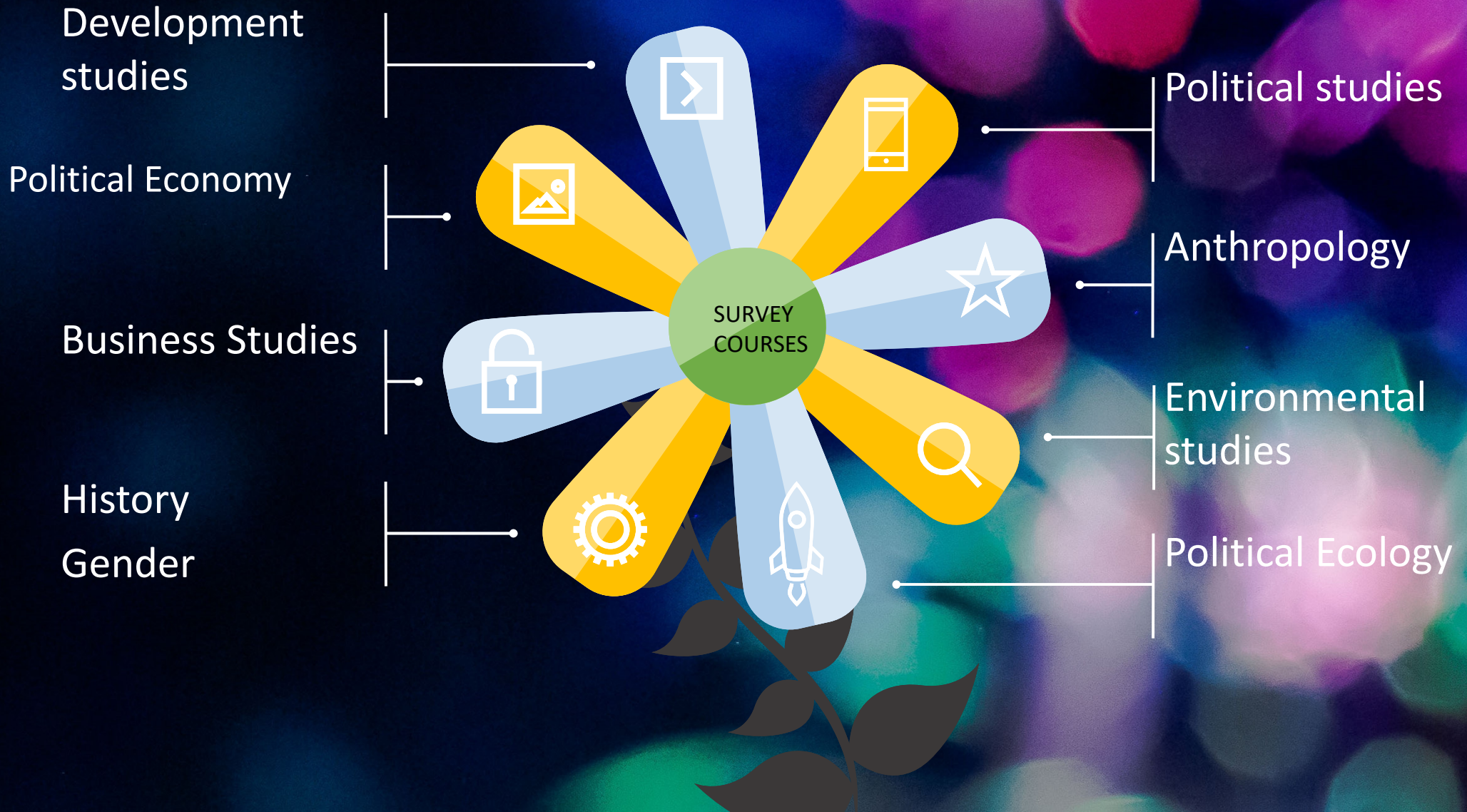
RESEARCH



INNOVATION



INTERDISCIPLINARY APPROACH



THE OPPORTUNITY



UNLOCKING
OPPORTUNITIES
THROUGH
INTERDISCIPLINARITY

• REAL ESTATE

• FORESTRY

• PROPOSAL WRITING

SYSTEMATIC
ADJUDICATION



DEBT COLLECTION

• TIME / LEADERSHIP

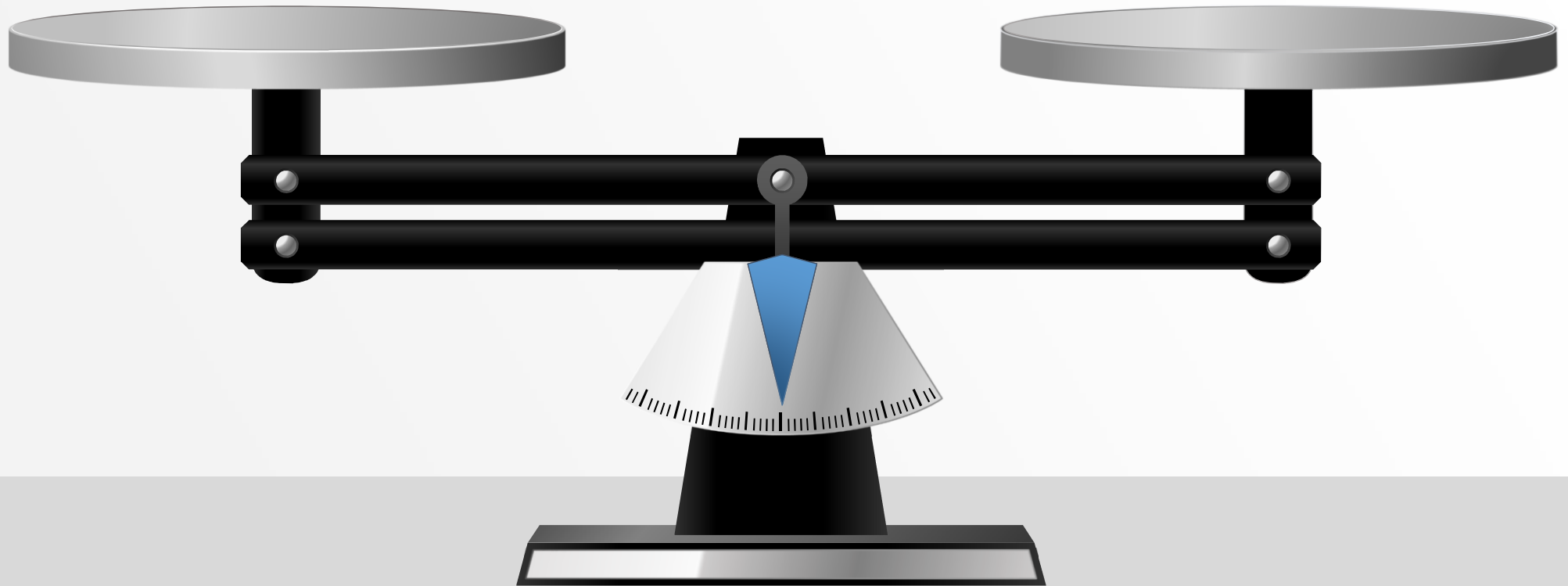
• INNOVATIONS

• COMMISSION
EARNERS

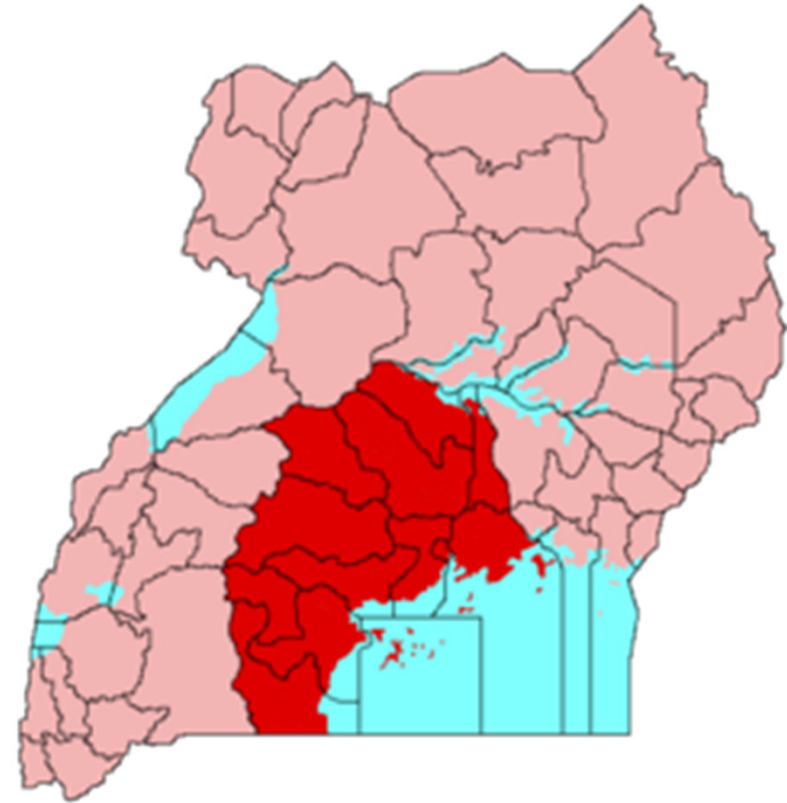
• LEGAL

Technical

Social aspects



SURVEYING



Most registered land is found in central Uganda. Covers approximately 23,707.9Sq Miles (25.5 %) and about 17% of the population. Leaves an estimate of about 70% unregistered land.

Mireembe Villas, Kigo Housing Project



Interventions on Kabaka's Land

- BLB sensitizes the public on their land rights. Awareness is key to protection of property rights.



Buganda Land Board



Buganda Kingdom/ BLB and CSO like Equiland Africana Foundation do not work in isolation but under the laws/constitution of Uganda and are surbordinate to the Ministry of Lands, Housing and Urban Development.



A political Economy approach that appreciates the role of other actors in the sector.

5 GENDER
EQUALITY



• Gender Equality

4 QUALITY
EDUCATION



• Quality Education

11 SUSTAINABLE CITIES
AND COMMUNITIES



• Sustainable Cities
and Communities

13 CLIMATE
ACTION



• CLIMATE ACTION

15 LIFE
ON LAND



• LIFE ON LAND

17 PARTNERSHIPS
FOR THE GOALS



• PARTNERSHIPS FOR THE
GOALS
• (NO POVERTY ZERO
HUNGER)



SSAABASAJJA KABAKA AWANGAALE

FOR GOD AND MY COUNTRY

PRESENTED BY: CISSY NAMUDDU SETTUMBA KIYAGA

PHD FELLOW, MPhil, MPAM, B.A

POLITICAL STUDIES AND POLITICAL ECONOMY

EMAIL: cissynkiyaga@gmail.com