



Collaboration, Innovation and Resilience: Championing a Digital Generation

Brisbane, Australia 6-10 April

## Embracing AI in Land Administration

Nick Land, Esri Inc.

Linda Foster, Esri Inc.

Lauren Voelker, Esri Inc.



PLATINUM SPONSORS





**WORKING  
WEEK 2025**

AND

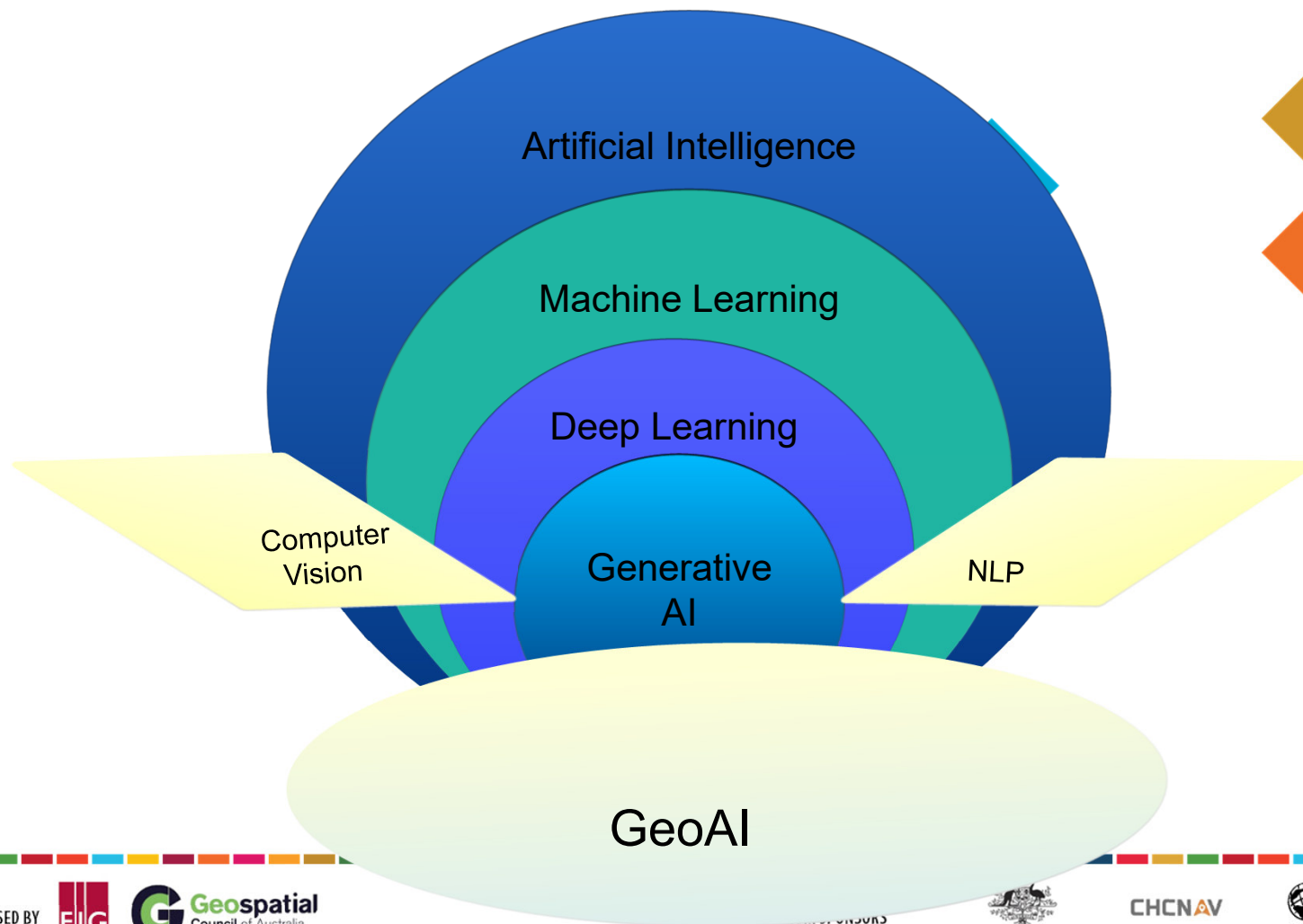
**Locate25**   
THE NATIONAL GEOSPATIAL CONFERENCE

Collaboration, Innovation and Resilience:  
Championing a Digital Generation



**Geospatial**  
Council of Australia

Brisbane, Australia 6–10 April



ORGANISED BY



**Geospatial**  
Council of Australia



Australian Government

CHCNAV



THE SCIENCE OF WHERE™





WORKING  
WEEK 2025

AND

Locate25 | G  
THE NATIONAL GEOSPATIAL CONFERENCE

Collaboration, Innovation and Resilience:  
Championing a Digital Generation



Geospatial  
Council of Australia

Brisbane, Australia 6–10 April



## GeoAI

Advancing the ***Science of GIS***, with AI models, tools and techniques, to automate data extraction at scale and uncover valuable insights faster than ever.



## AI Assistants

Creating more natural and intuitive ***Experiences of ArcGIS***, using intelligent *AI assistants and agents*, to empower GIS users and boost productivity.

ORGANISED BY



Geospatial  
Council of Australia

PLATINUM SPONSORS



Australian Government

CHCNAV



THE SCIENCE OF WHERE™

Leica  
Geosystems







**WORKING  
WEEK 2025**

AND

**Locate25** |   
THE NATIONAL GEOSPATIAL CONFERENCE

Collaboration, Innovation and Resilience:  
Championing a Digital Generation



**Geospatial**  
Council of Australia

Brisbane, Australia 6–10 April



## GeoAI

Advancing the ***Science of GIS***, with AI models, tools and techniques, to automate data extraction at scale and uncover valuable insights faster than ever.



## AI Assistants

Creating more natural and intuitive Experiences of ArcGIS, using intelligent AI assistants and agents, to empower GIS users and boost productivity.

ORGANISED BY



**Geospatial**  
Council of Australia

PLATINUM SPONSORS



Australian Government

CHCNAV



**esri**  
THE SCIENCE OF WHERE™

**Leica**  
Geosystems



HD  
Meter



**Surveyors**  
Australia



## GeoAI in GIS



### *Extracting data*

- Computer vision on Imagery, 3D, and Video data
- Natural Language Processing on Unstructured Text data

### *Analyzing data*

- Machine learning and deep learning on Vector, Tabular, and Time series data

# Extracting Spatial Data

Feature extraction from Imagery, 3D, and Video

## Highlights

- Model training wizard
- AutoDL
- Multi-feature extraction
- Attachments
- Time-series
- SuperRes New Model (Pro)
- SAMLoRA fine-tune (Pro)
- Prithvi fine-tune (Pro)
- Text prompts for labelling
- Multi-GPU inferencing
- 3D Object Detection



# GIS Living Atlas of the World

esri ArcGIS Industries About Support

ArcGIS Living Atlas of the World Home Browse Apps Blog Contribute My Favorites

Search Living Atlas for maps, apps, and more

Search Examples

All Trending Basemaps Imagery Boundaries People Infrastructure Environment

Tools x All time x All regions x ☒ Esri-only content ☐ Authoritative-only content Sort by: Popularity x

Basemap Imagery

Deep Learning Package Segment Anything Model (SAM) By esri\_analytics

Deep Learning Package Building Footprint Extraction - ... By esri\_analytics

Deep Learning Package Road Extraction - Global By esri\_analytics

Deep Learning Package Tree Detection By esri\_analytics

Deep Learning Package Windows and Doors Extraction By esri\_analytics



# Pretrained GeoAI Models

- Cars
  - License Plate Blurring
  - Parking Lots
  - Parking Spots
  - Humans
  - Crowd Counting
  - Face Blurring
  - Land Cover
  - Buildings
  - Roads
  - Parcels
  - Ag Fields
  - Swimming Pools
  - Well Pads
  - Oil Spills
  - Palm Trees
  - Power Lines
  - Transmission Towers
  - Insulator Defects
  - Wind Turbines
  - Solar Arrays
  - Solar Panels
- Ships
  - Shipwrecks
  - Oil Spills
  - Palm Trees
  - Trees
  - Plant Leaf Disease
  - Common Object Detection
  - Text Parsing from Photo
  - Object Tracking
  - Segment Anything Model (SAM)
  - CLIP Zero Shot Classifier
  - Text SAM
  - Prithvi (Crops, Burn Scars, Floods)
  - Building Point Classification
  - Wildfire Delineation
  - Oil Tanks
  - Pylons
  - Optical Character Recognition
  - Cooling Towers
  - Agricultural field boundaries
  - Cloud Mask Generation
  - Ship Detection
  - Tree Segmentation
  - Transmission H-Structure Detection
  - ... and Many More

State & Local Government  
Public Safety  
Conservation  
Transportation  
Natural Resources  
Commercial Business  
National Security  
Insurance  
Utilities

Elephant Detection



Road Extraction (Global)



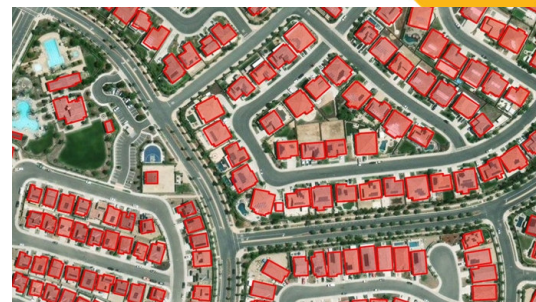
Wind Turbine Detection



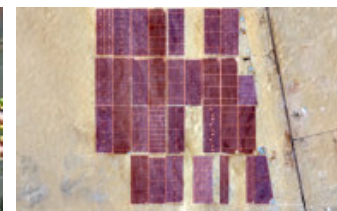
Cloud Mask Generation



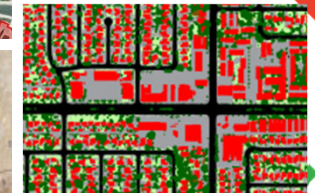
Building Footprints



Parking Spot Detection



Solar Park Classification



Land-Cover Classification





**WORKING  
WEEK 2025**

AND

**Locate25**   
THE NATIONAL GEOSPATIAL CONFERENCE

Collaboration, Innovation and Resilience:  
Championing a Digital Generation



**Geospatial**  
Council of Australia

Brisbane, Australia 6–10 April

# Extracting Spatial Data

## Government

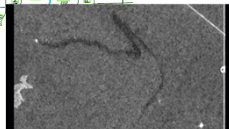
Land Cover  
Classification



Pool Segmentation  
(SAM)



Optical Character  
Recognition



Oil Spill Detection (SAR)

Address Correction

Input address	Result
1 23, yosemite crescent north east, medicine hat, ca	23, yosemite crescent north east, medicine hat, ca
2 8, el prieta padomodo, 49574, es	8, el prieta padomodo, 49574, es
3 60, chemin de la clette, brisau, 69380, fr	60, chemin de la clette, brisau, 69380, fr
4 1320er, rue chabot, denain, 59220, fr	1320er, rue chabot, denain, 59220, fr

## Highlights

- 75+ models
- Foundation models
  - Segment Anything Model (SAM)
  - Text SAM
  - Prithvi
  - Clip Zero-Shot Classifier
- Building Point Classification
- Wildfire Delineation

## Public Safety

Human Detection  
(Drone Imagery)



Optical Character  
Recognition

## Conservation

Waterbody Extraction (USA)



Elephant Detection



Seabird Detection

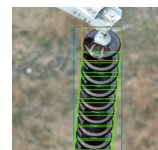


Mangrove Detection



## Utilities

Insulator Defect  
Detection



Solar Photovoltaic Park  
Classification (Global)



Transmission  
H-Structures



Solar Panel Detection

## Natural Resources

Well Pad Detection



Agricultural Field  
Delineation



Tree Segmentation

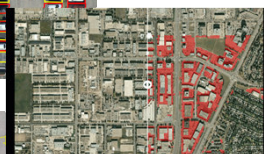
## Transportation

Parking Spot Detection



Road Crack Detection

Parking Lot Detection



ORGANISED BY



**Geospatial**  
Council of Australia

PLATINUM SPONSORS



Australian Government



THE SCIENCE OF WHERE™



**Surveyors**  
Australia





**WORKING  
WEEK 2025**

AND

**Locate25**   
THE NATIONAL GEOSPATIAL CONFERENCE

Collaboration, Innovation and Resilience:  
Championing a Digital Generation

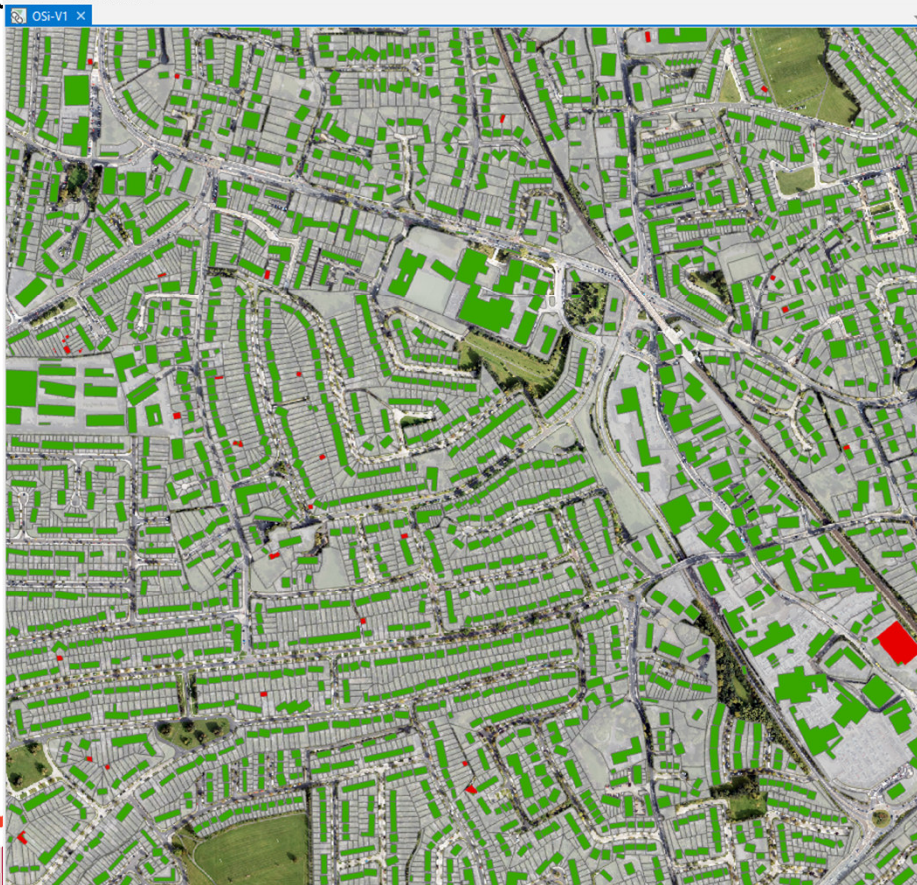


**Geospatial**  
Council of Australia

Brisbane, Australia 6–10 April

# Change Detection & Building Feature Extraction

Lands Ireland



ORGANISED BY



 Council of Australia

PLATINUM SPONSORS

Australian Government

THE SCIENCE OF WHERE™

Geosystems

 **Surveyors**  
Australia



## Building Extraction

City of Cape Town

- Informal Settlement
- Drone Imagery





**WORKING  
WEEK 2025**

AND

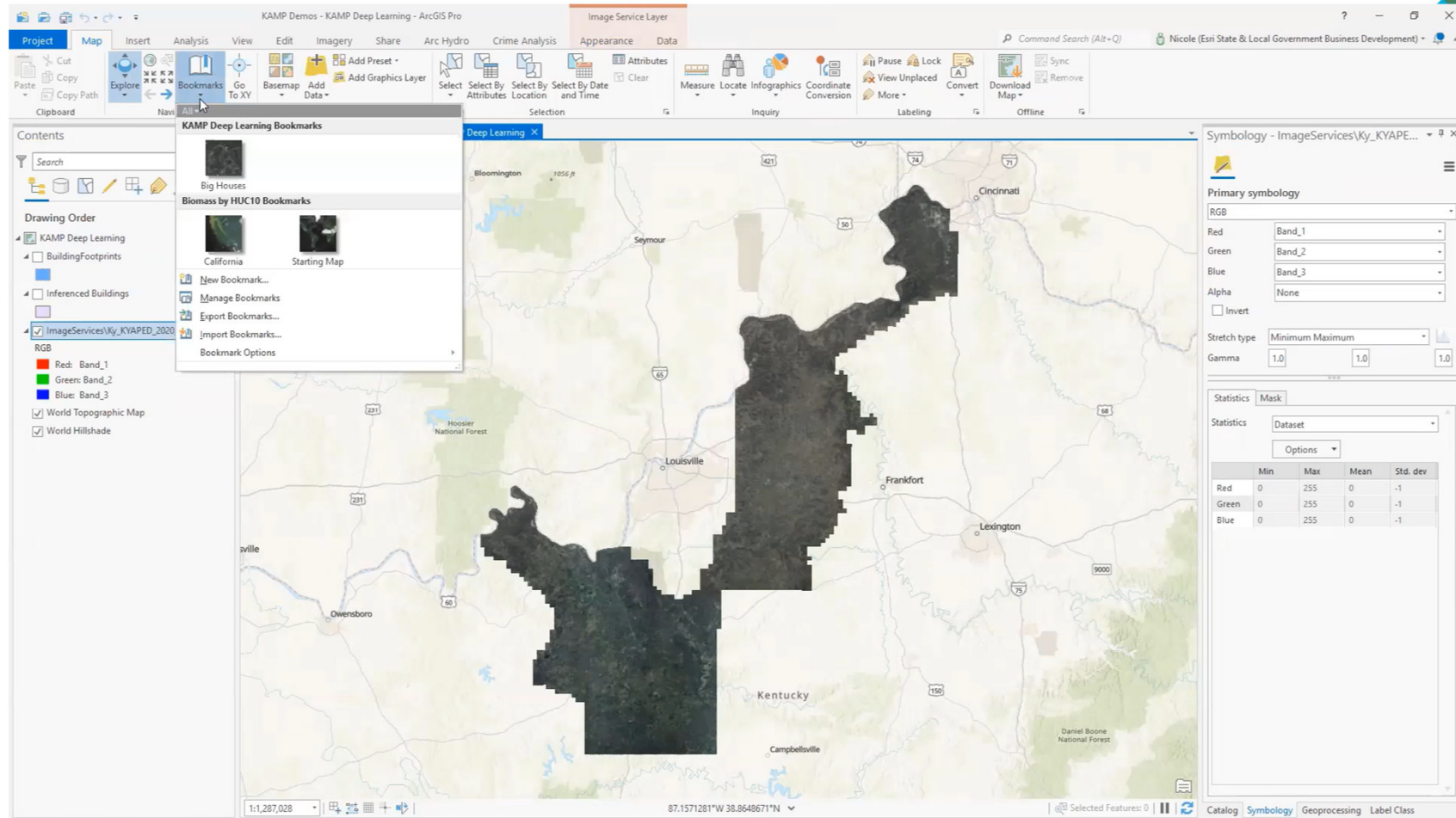
**Locate25**   
THE NATIONAL GEOSPATIAL CONFERENCE

Collaboration, Innovation and Resilience:  
Championing a Digital Generation



**Geospatial**  
Council of Australia

Brisbane, Australia 6–10 April



ORGANISED BY



**Geospatial**  
Council of Australia

PLATINUM SPONSORS



CHCNV







**WORKING  
WEEK 2025**

AND

**Locate25**  
THE NATIONAL GEOSPATIAL CONFERENCE

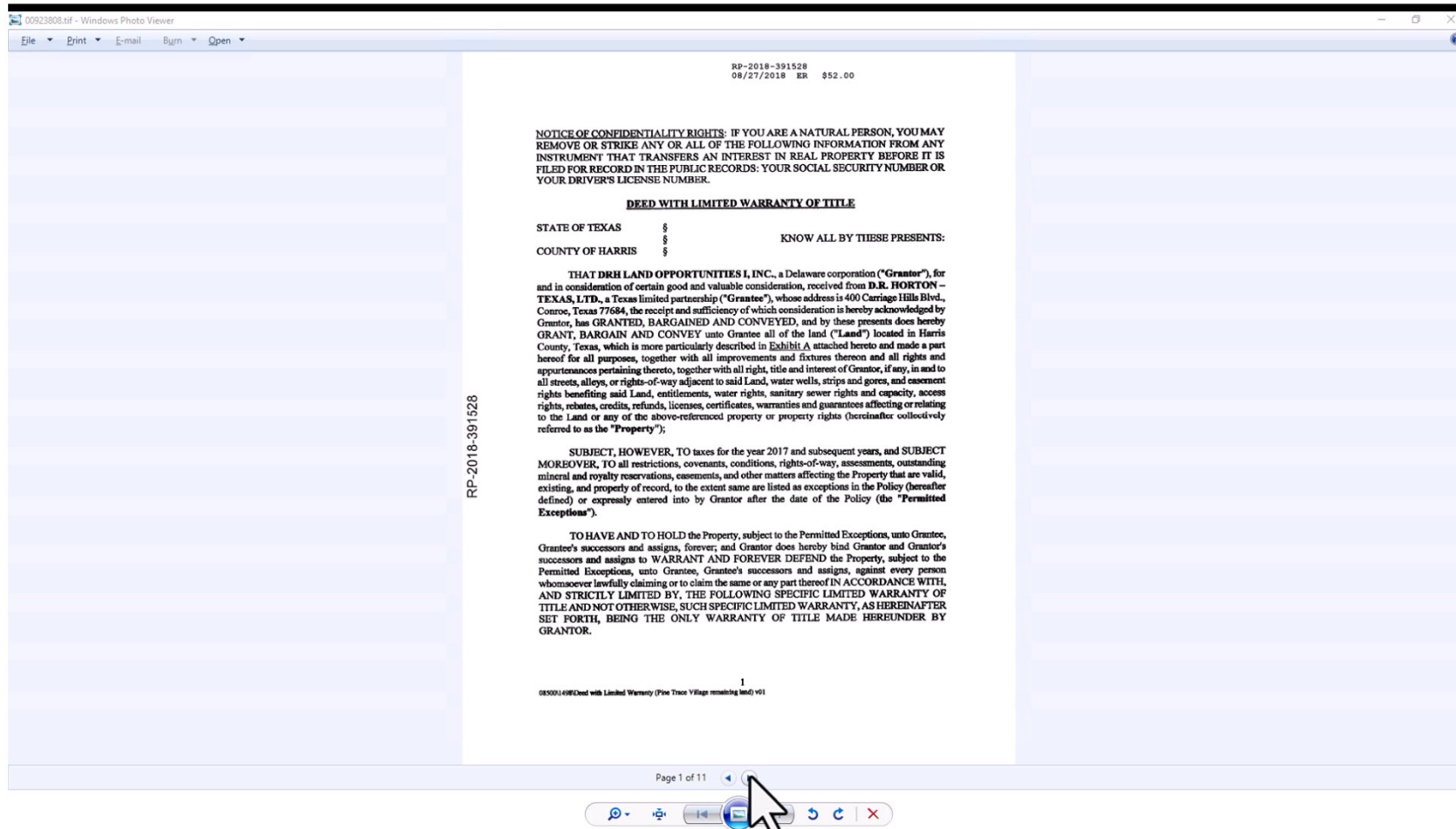


Collaboration, Innovation and Resilience:  
Championing a Digital Generation



**Geospatial**  
Council of Australia

Brisbane, Australia 6–10 April



ORGANISED BY



**Geospatial**  
Council of Australia

PLATINUM SPONSORS



Australian Government

CHCNAV



THE SCIENCE OF WHERE™







**WORKING  
WEEK 2025**

AND

**Locate25**   
THE NATIONAL GEOSPATIAL CONFERENCE

Collaboration, Innovation and Resilience:  
Championing a Digital Generation



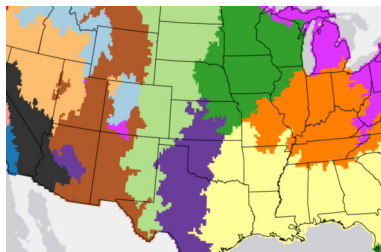
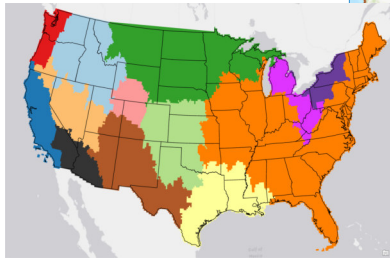
**Geospatial**  
Council of Australia

Brisbane, Australia 6–10 April

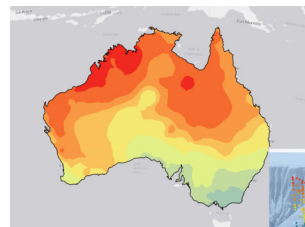
# Analyzing Spatial Data

Detecting Clusters & Making Predictions

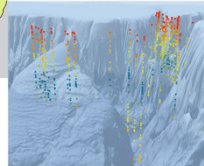
**Spatially Constrained  
Multivariate Clustering**  
(SKATER)



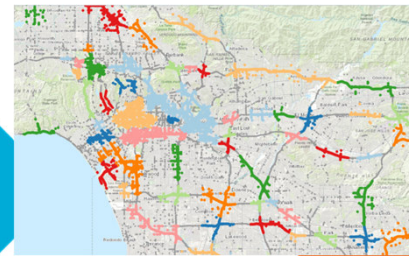
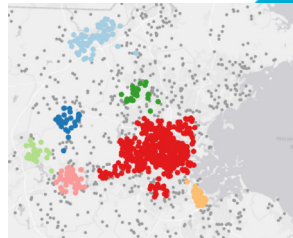
**Multivariate Clustering**  
(K-means)



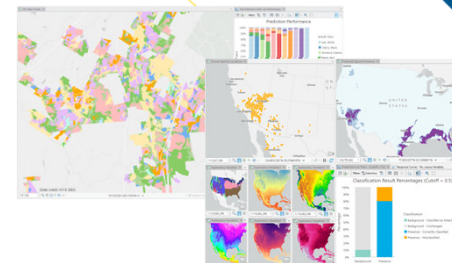
**Interpolation**  
(Empirical Bayesian  
Kriging)



**Density-Based  
Clustering**  
(DBSCAN, HDBSCAN,  
OPTICS)

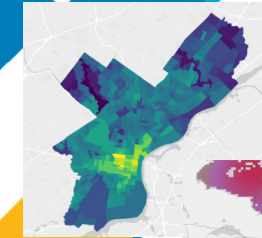


**Forest-based & XGBoost**

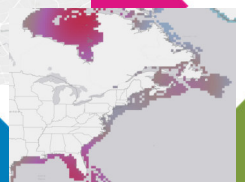


Presence-only  
Prediction (MaxEnt)

**Linear Regression**



**Logistic  
Regression**



**GWR / MGWR**



GWR

MGWR

**Regression &  
Classification**

ORGANISED BY



**Geospatial**  
Council of Australia

PLATINUM SPONSORS



CHCNAV





**WORKING  
WEEK 2025**

AND

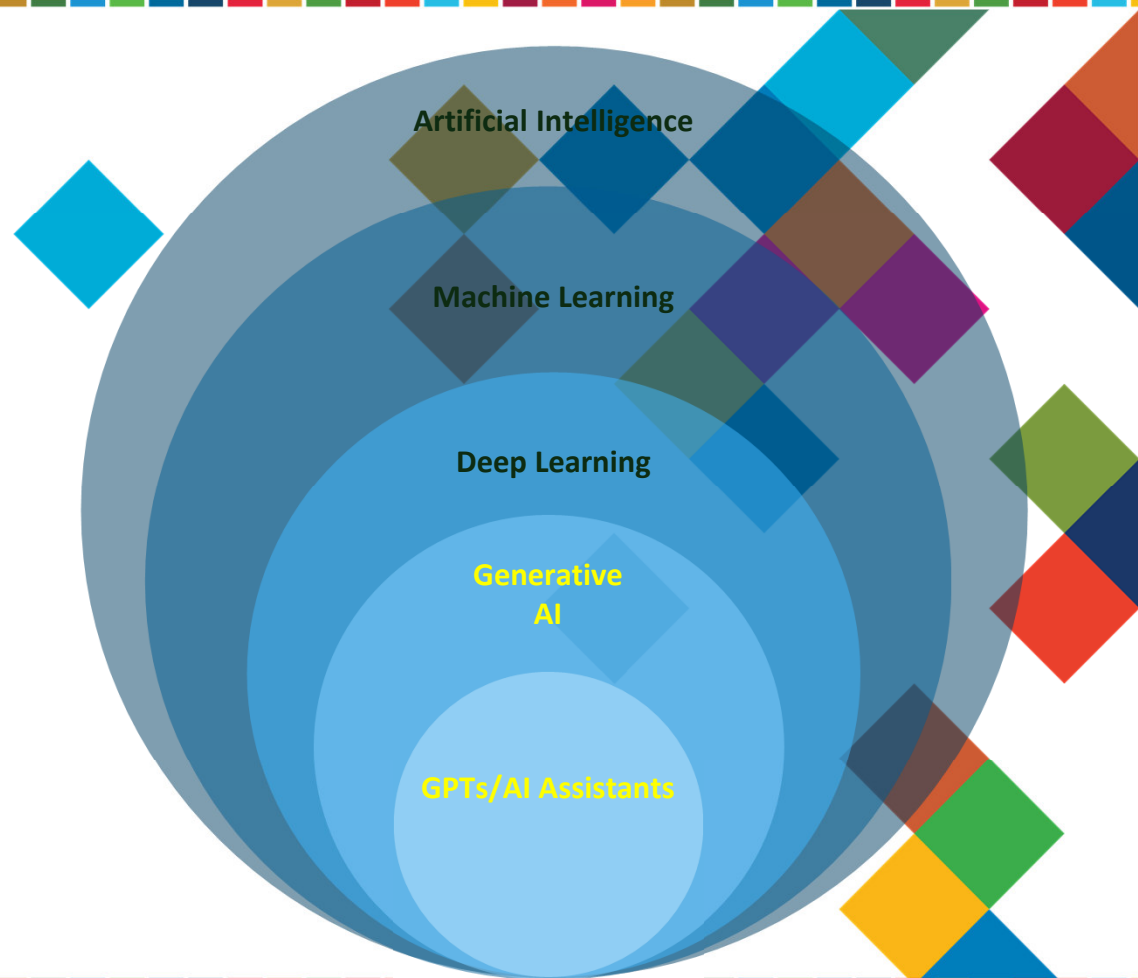
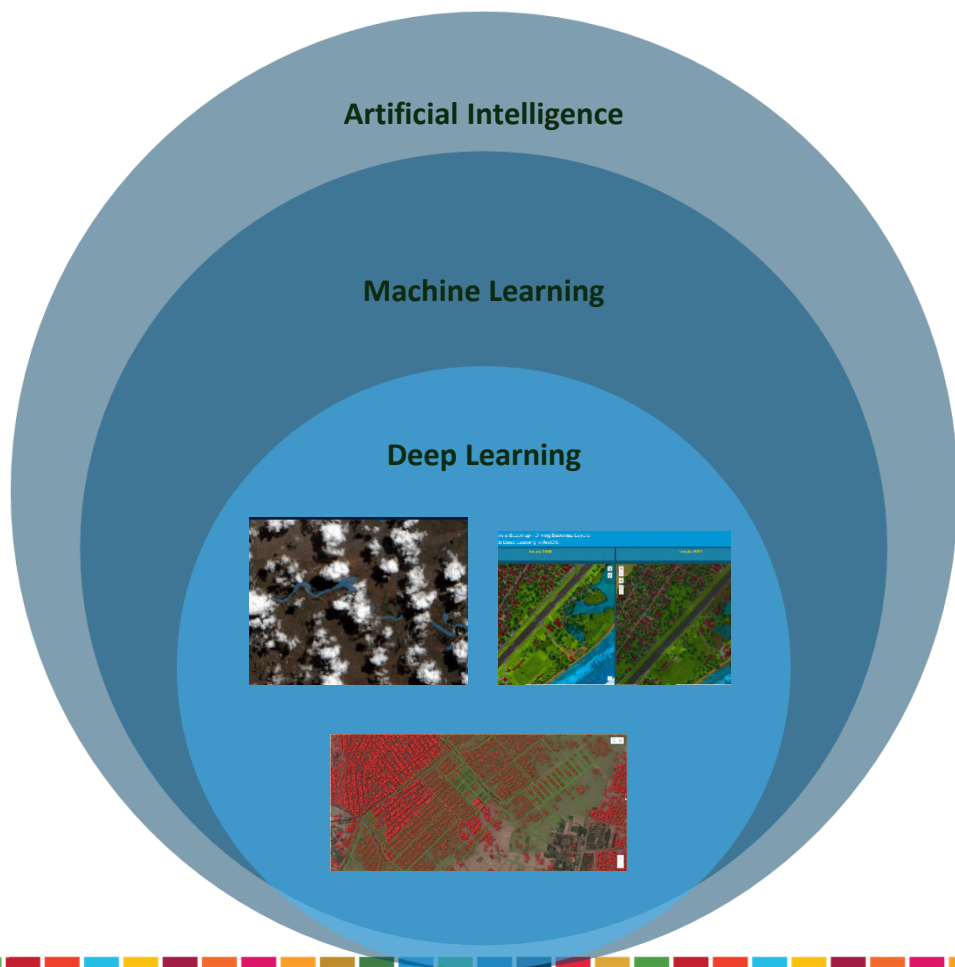
**Locate25** | **G**  
THE NATIONAL GEOSPATIAL CONFERENCE

Collaboration, Innovation and Resilience:  
Championing a Digital Generation



**Geospatial**  
Council of Australia

Brisbane, Australia 6–10 April



ORGANISED BY



**Geospatial**  
Council of Australia

PLATINUM SPONSORS



Australian Government

CHCN AV



**esri**  
THE SCIENCE OF WHERE™

**Leica**  
Geosystems



HD  
Meter



**Surveyors**  
Australia



**WORKING  
WEEK 2025**

AND

**Locate25** |   
THE NATIONAL GEOSPATIAL CONFERENCE

Collaboration, Innovation and Resilience:  
Championing a Digital Generation



**Geospatial**  
Council of Australia

Brisbane, Australia 6–10 April



## GeoAI

Advancing the ***Science of GIS***, with AI models, tools and techniques, to automate data extraction at scale and uncover valuable insights faster than ever.



## AI Assistants

Creating more natural and intuitive ***Experiences of ArcGIS***, using intelligent *AI assistants and agents*, to empower GIS users and boost productivity.

ORGANISED BY



**Geospatial**  
Council of Australia

PLATINUM SPONSORS



Australian Government

CHCNAV



THE SCIENCE OF WHERE™





## Scope and Personas for AI Assistants

### Standalone AI Assistants

A completely new user experience for non-GIS experts to explore, visualize and analyze geospatial content through natural language

### GIS

Content  
Mapping  
Analysis  
...

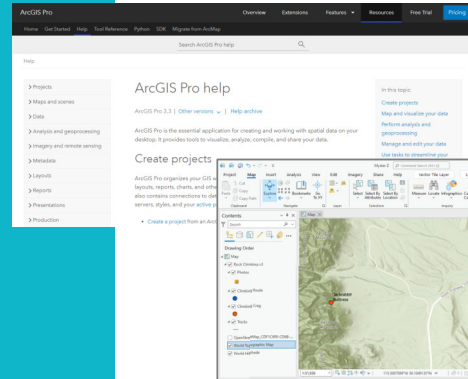
# AI Assistants

Leveraging Generative AI to streamline your work and make GIS easier for everyone

## Assistants for..

- Mapping
- Analysis
- App creation
- Data management
- Administration
- Search
- Learning
- ...

### Documentation



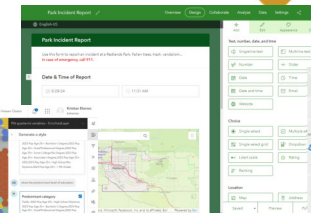
Pro

### Smart Mapping

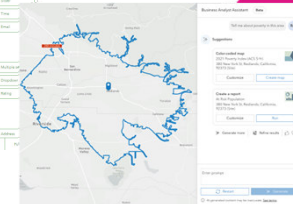


GIS

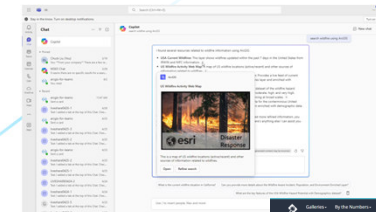
Survey123



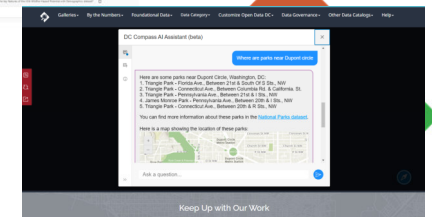
Business Analyst



Microsoft Teams



Configurable Assistant Apps



Boosting productivity

making GIS easier

## Also in the works...

- Enhanced search
- Coding assistants for Arcade and Python
- Streamlined metadata editor
- Many more...



**WORKING  
WEEK 2025**

AND

**Locate25**   
THE NATIONAL GEOSPATIAL CONFERENCE

Collaboration, Innovation and Resilience:  
Championing a Digital Generation



**Geospatial**  
Council of Australia


Brisbane, Australia 6–10 April

Building Survey Form

Please fill out the details about the building.

Address

Upload photo of property\*

Drop image here or select image 

Detailed Building Description\*

1000

Exterior Material\*

Amount of Floors\*

Number of windows\*

ORGANISED BY



**Geospatial**  
Council of Australia

PLATINUM SPONSORS



CHCN AV





## GIS is being infused with even more AI Technologies

Enhancing the user experience, becoming a more intelligent GIS platform for organizations

Intelligent  
Application Experiences

Expedited  
Decision Making



Improving User Productivity, Providing Valuable and Faster Insights

## The most relevant SDGs related to the presentation and theme of this session

1st relevant  
SDG

**9** INDUSTRY, INNOVATION  
AND INFRASTRUCTURE



2nd relevant  
SDG

**11** SUSTAINABLE CITIES  
AND COMMUNITIES



3rd relevant  
SDG

**15** LIFE  
ON LAND



**SUSTAINABLE  
DEVELOPMENT GOALS**

International Federation of Surveyors supports the  
Sustainable Development Goals





**WORKING  
WEEK 2025**

AND

**Locate25** | **G**  
THE NATIONAL GEOSPATIAL CONFERENCE

Collaboration, Innovation and Resilience:  
Championing a Digital Generation



**Geospatial**  
Council of Australia

Brisbane, Australia 6–10 April

STEP 1: SELECT HERE THE THREE MOST RELEVANT SDGs  
STEP 2: COPY THE SDG INTO PREVIOUS SLIDE



ORGANISED BY



**Geospatial**  
Council of Australia

PLATINUM SPONSORS



CHCNAV

