



**WORKING
WEEK 2025**



Locate25 | **G**
THE NATIONAL GEOSPATIAL CONFERENCE

Presented at the FIG Working Week 2025,
6-10 April 2025 in Brisbane, Australia

FIG | **Geospatial**
Council of Australia

Collaboration, Innovation and Resilience: Championing a Digital Generation

Brisbane, Australia 6-10 April

EVOLUTION TOWARDS REAL-TIME INFORMATIC UPDATING IN THE CADASTRAL FIELD

Geom. Pasquale GIOVANNELLI
Italy



Consiglio Nazionale
Geometri e Geometri Laureati

ORGANISED BY **FIG**

Geospatial
Council of Australia

PLATINUM SPONSORS


Australian Government

CHCNAV

 **esri**
THE SCIENCE OF WHERE™

Leica
Geosystems

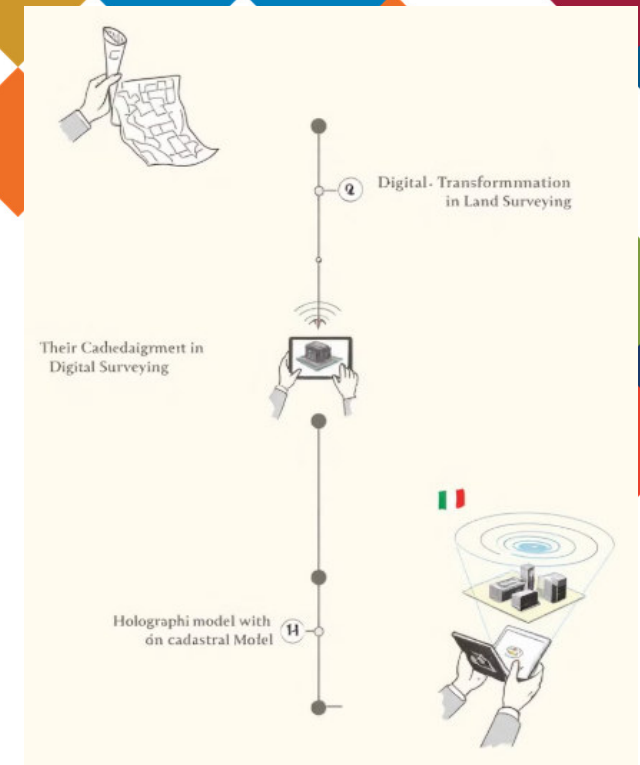
 **HMD**
Meter

 **Surveyors**
Australia

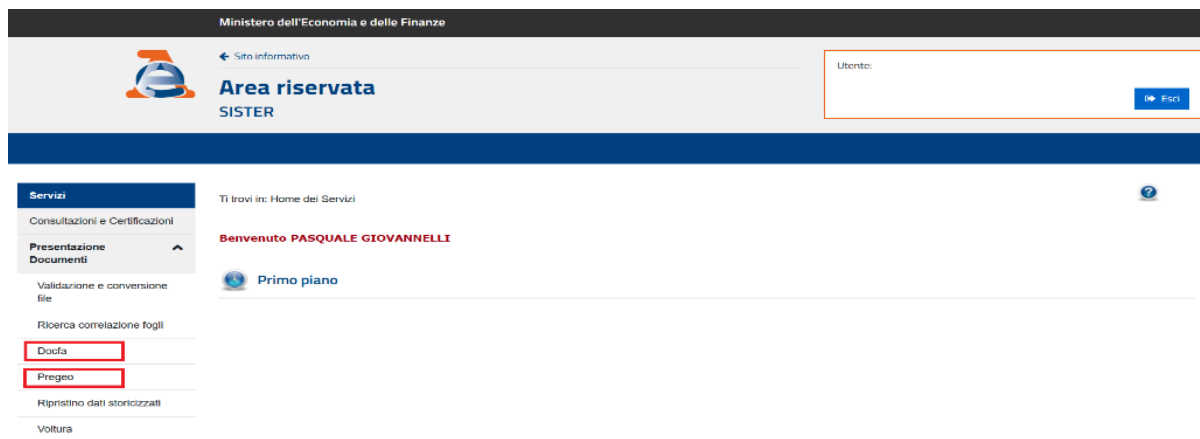
Digital Transformation of the Italian Land Registry

The digital transformation of Italy's Land Registry began in the 1980s. Key regulatory measures in 1999 and 2010 established the Integrated Real Estate Registry. Estate Registry.

This transformation improved data quality, simplified procedures, and territorial monitoring.



The Revenue Agency's IT System



Advanced Digital System

The Italian Revenue Agency has implemented an advanced digital system for managing cadastral procedures.

SISTER Portal

The system is supported by the SISTER portal (Interchange System for Territory).

Efficient Interaction

This enables professionals to interact efficiently with the land registry.

Features of the IT System



Automation

The system uses automatic validation algorithms to verify the formal and technical accuracy of submitted applications.



Integration

SISTER portal serves as the main interface for accessing cadastral and cartographic services.



Compliance

The automation of procedures complies with current regulations and ensures process transparency, making all approval stages accessible to users.



The SISTER Portal: Interchange System for Territory

Cadastral Data Consultation

Access to properties, surveys, map, and historical documents related to parcels and real estate units .

Cadastral Procedures

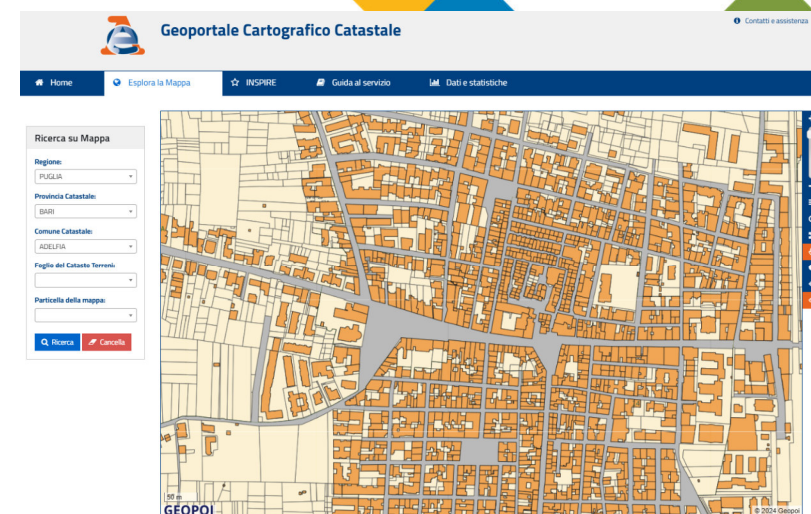
Submission of DOCFA for property changes and PREGEO for cartographic updates and land parceling

Digital Cartography

The portal provides visual representation of territory with map extracts and cartographic data for geographic analysis, viewing cadastral boundaries and verifying property locations.

Professional Access

Dedicated tools for surveyors,
architects, engineers, and notaries.



Cadastral Update Procedures

1

Property Owner Responsibility

While the state formed the land registry, updates are the responsibility of property owners.

2

Digital Submission

Digitization has enabled online submission of cadastral change requests.

3

Real-time Registration

These procedures aim to enable real-time registration of changes to databases.



**WORKING
WEEK 2025**

AND

Locate25 | **G**
THE NATIONAL GEOSPATIAL CONFERENCE

Collaboration, Innovation and Resilience:
Championing a Digital Generation



Geospatial
Council of Australia

Brisbane, Australia 6–10 April

PREGEO and DOCFA Procedures

1

PREGEO

Used for Land Cadastre updates including subdivision plans and map types.

2

DOCFA

Used for Urban Building Cadastre updates for new constructions or modifications.

3

Digital Processing

Both allow creation of digital files with technical and graphic information.

ORGANISED BY



PLATINUM SPONSORS



CHCN AV



PREGEO: Land Cadastre Procedure

1

Subdivision Plan

Divides parcels into new geometrically distinct areas

2

Map Type

Required for new buildings or expansions

3

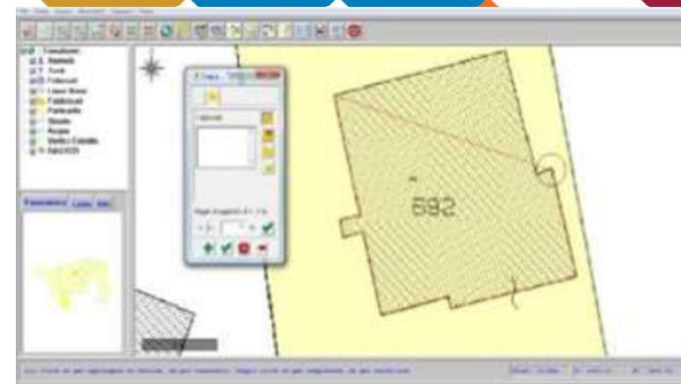
Digital Processing

Updates both cartographic and census archives

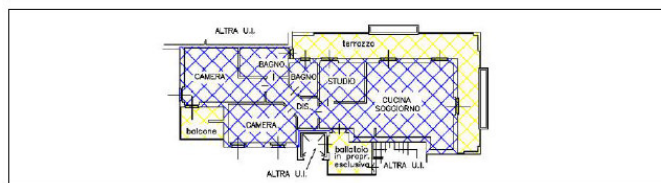
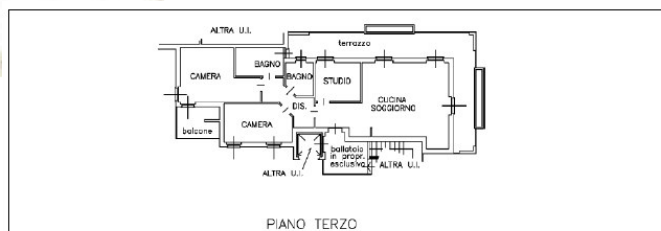
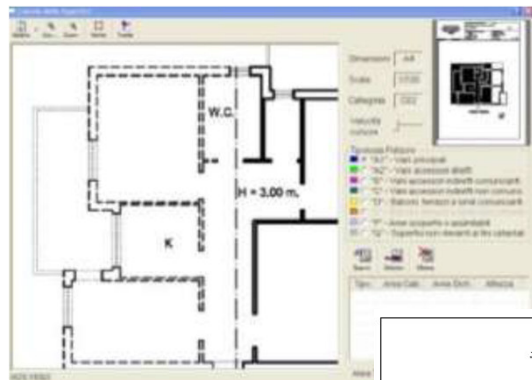
4

Automatic Processing

No manual intervention required



DOCFA: Building Cadastre Procedure



New Constructions

Registration of new buildings or structures

Modifications

Updates for structural or functional changes

Digital Files

Contains floor plans and technical drawings

Old vs. New Approval System

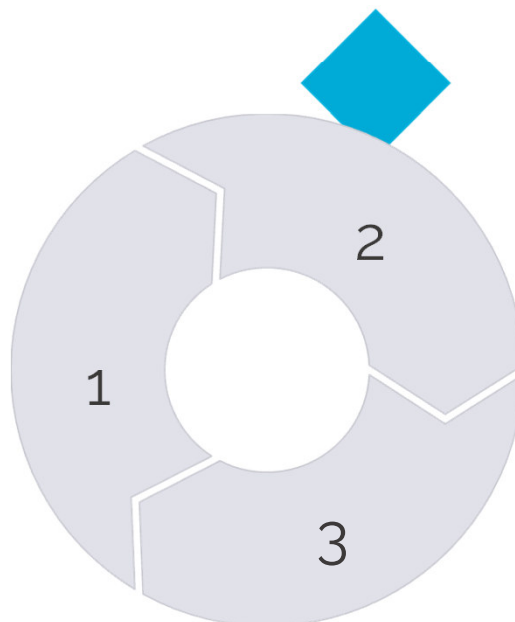
Aspect	Old System	New System
Processing	Manual review by staff	Automated algorithms
Time	Days or weeks	Minutes or hours
Accuracy	Variable, risk of human error	Standardized, consistent checks
Interaction	Direct with staff	Digital portal (SISTER)
Cost	High operational costs	Cost-efficient, optimized optimized



Automatic Approval Operation

Submission

A licensed professional fills out the
DOCFA/PREGEO application and
submits it electronically to the
Revenue Agency.



Verification

The system checks the declaration by
comparing entered data with existing
database records.

Decision

If the application is correct and
consistent, it is approved automatically
within minutes. Otherwise, the system
flags errors or inconsistencies, requiring
corrections from the professional.

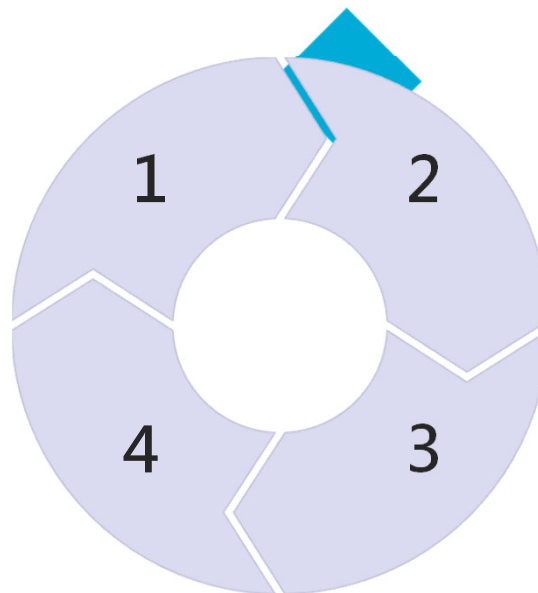
Benefits and Limitations

Simplified Procedures

Significantly shorter processing times

Professional Efficiency

Immediate results accelerate projects



Reduced Errors

Algorithms follow strict rules

Greater Transparency

Improved tracking for citizens

Not all applications can be automatically approved. Complex cases still require manual review.

Future Developments and Conclusion

Expanded Procedures

The system will extend to additional additional types of cadastral applications.

System Integration

Linking with municipal databases improve efficiency.

New Features

Future tools may include simulation and and automatic property valuation.

Italy's digital transformation under the National Recovery and Resilience Plan aims to modernize public services and With strategic planning, the cadastral sector can successfully navigate these challenges and fully benefit from digital

Thanks for your attention

REFERENCES CONTACTS

GIOVANNELLI Pasquale

Via Isonzo, 34 - 70010 Adelfia (BA)

Italy

Tel. +39 349 2742100

Email: geogiov.pas@gmail.com

The most relevant SDGs related to the presentation and theme of this session

1st relevant
SDG

8 DECENT WORK AND
ECONOMIC GROWTH



2nd relevant
SDG

9 INDUSTRY, INNOVATION
AND INFRASTRUCTURE



3rd relevant
SDG

17 PARTNERSHIPS
FOR THE GOALS



**SUSTAINABLE
DEVELOPMENT GOALS**

International Federation of Surveyors supports the
Sustainable Development Goals