

Geo-spatial Mapping and Multi-criteria Analysis of the Downstream Flood Risk Settlements of Usman Dam Abuja-Nigeria

T. I. Youngu, S. Azua, Y. A. Aliyu, A. Z. Abubakar, A. Bala, A. O. Aliyu & M. A. Joel

Department of Geomatics, Ahmadu Bello University Zaria-Nigeria

FIG Working Week 2020
Amsterdam-The Netherlands
10 – 14 May

Presented at the FIG Working Week 2020
10-14 May 2020 in Amsterdam, the Netherlands

Presentation Outline

- Introduction
- Study Area
- Methodology
- Results
- Conclusions

Introduction

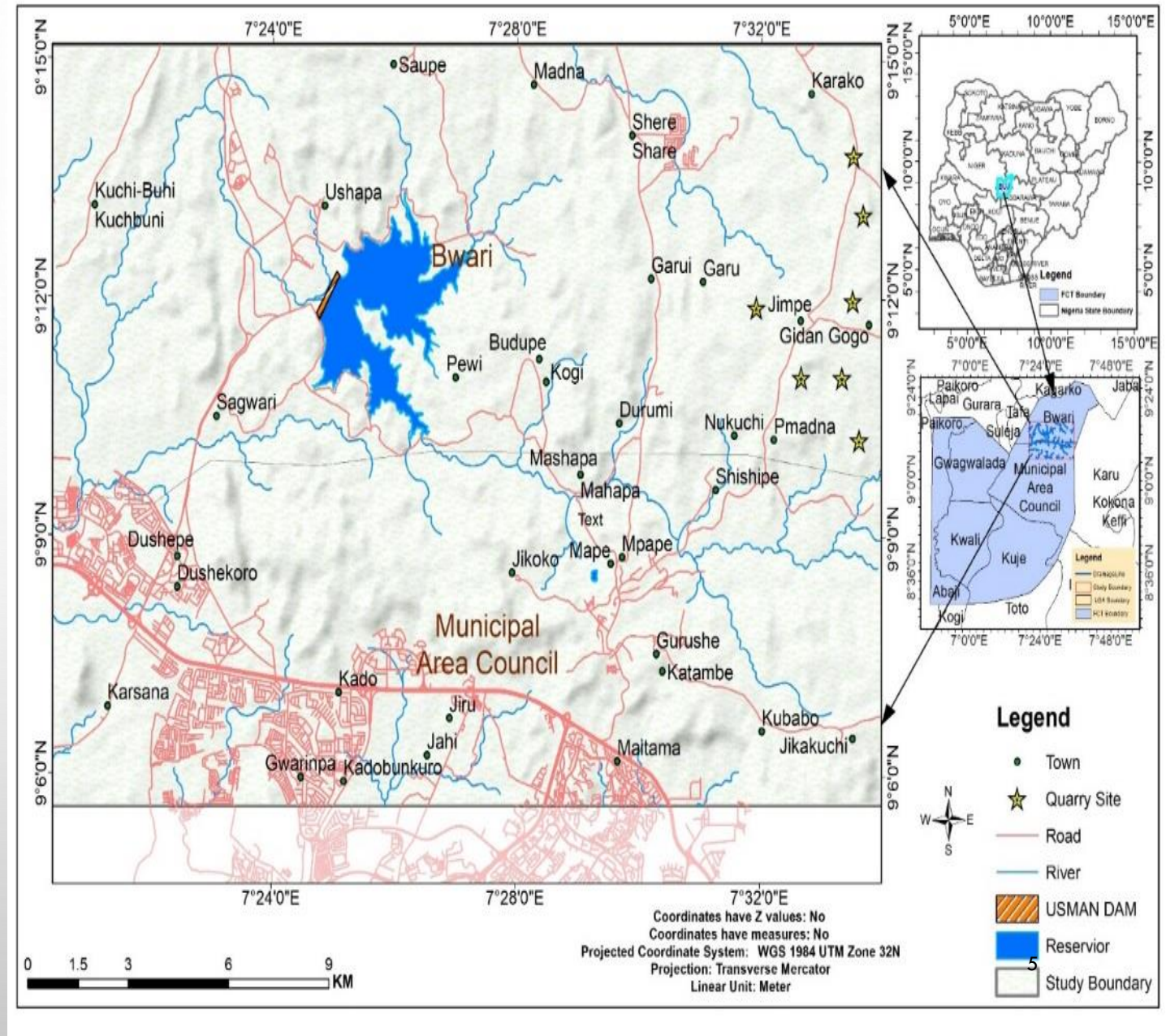
- Flooding is one of the most common and widespread of all weather-related natural disasters in the world.
- Flooding is caused by heavy rains, ocean waves coming onshore, fast melting snow, the breaking of dams or levees amongst others.
- In Nigeria, most floods occur because of excessive rainfall leading to dams opening their spillway and dam failures which lead to vast hectares of land rendered useless.

Introduction contd.

- Some research efforts have been carried out in the recent past on Flood incidences with a view to understanding their factors and effects on the immediate environment (Khalequzzaman, 2011; Jansen *et al.*, 2013; Ojigi *et al.*, 2013; Azua *et al.*, 2019).
- However, with no current way of fully compensating for the factors of Flooding, it is imperative that periodic investigations are conducted to reduce their effects on the environment

Study Area

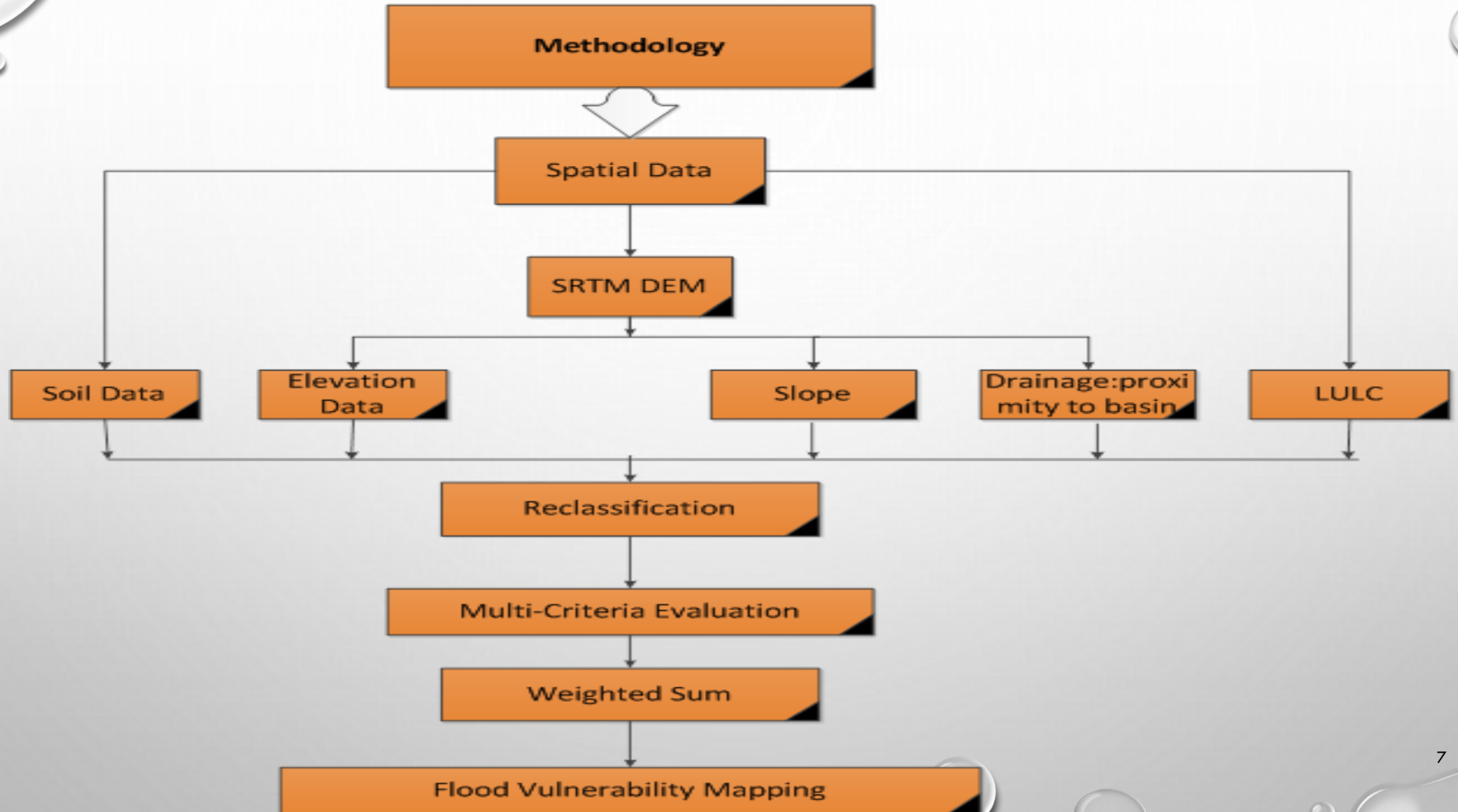
- It covers the communities downstream of Usman dam near Ushapa of Bwari Area Council of the Federal Capital Territory, Nigeria.
- Longitudes $7^{\circ}24'29.596''$ and $7^{\circ}29'3.259''$ East and Latitudes $9^{\circ}13'35.928''$ and $9^{\circ}8'7.435''$ North.



Usman Dam & Downstream Settlement



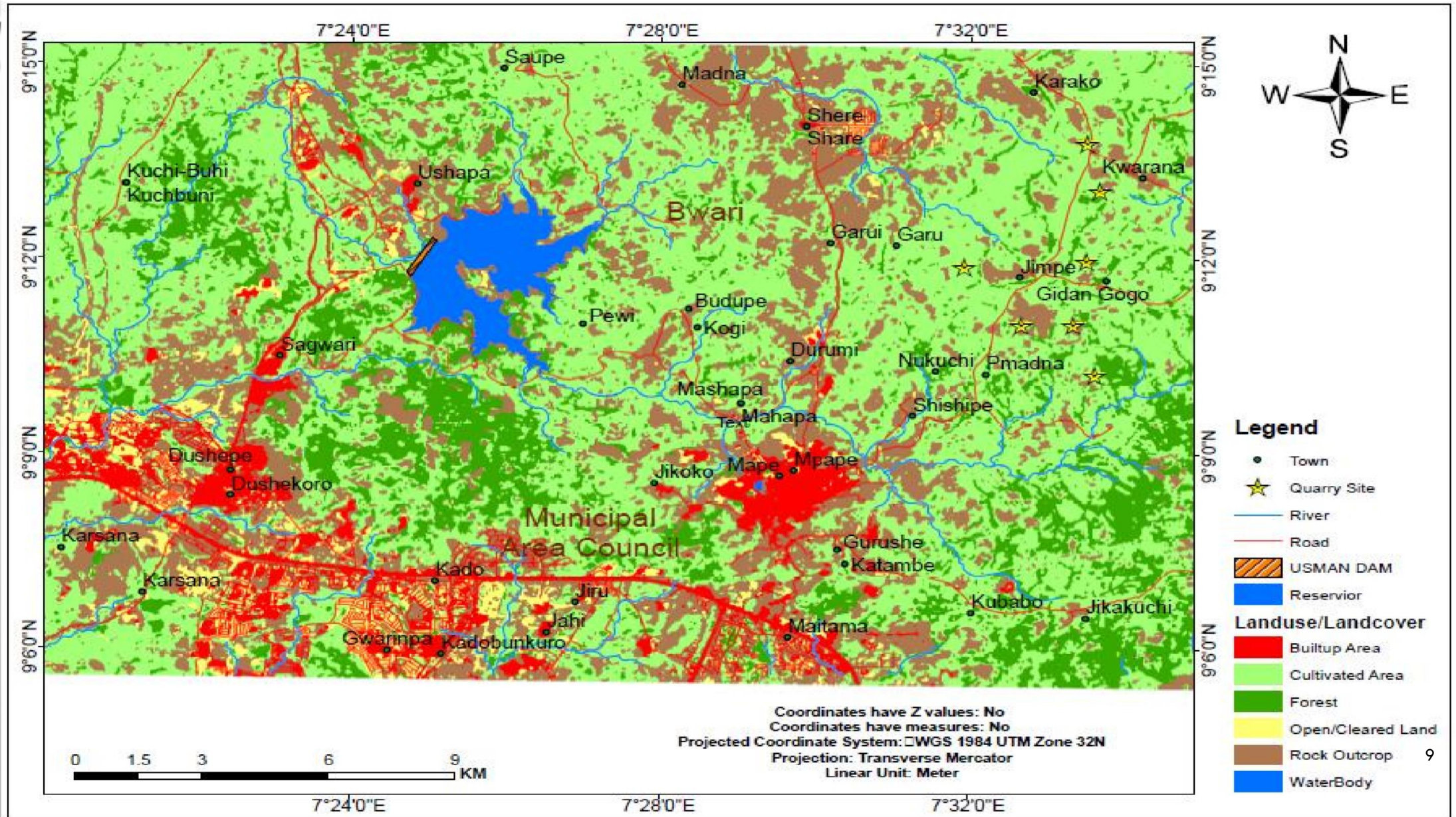
Methodology – Workflow Diagram



Results

- LULC Identified/Classified – built-up (6.32%), farmland (6.97%), forest (31.96%), grassland (37.16%), rock outcrop (8.80%) and water body (8.79%).
- Overall accuracy was 99.19% while the Kappa Coefficient was 98.74%.
- Classes were ranked between “very small contributor” to “extreme high contributor” to Flood between the ‘<0.1 and 1’ index values.

LULC Map

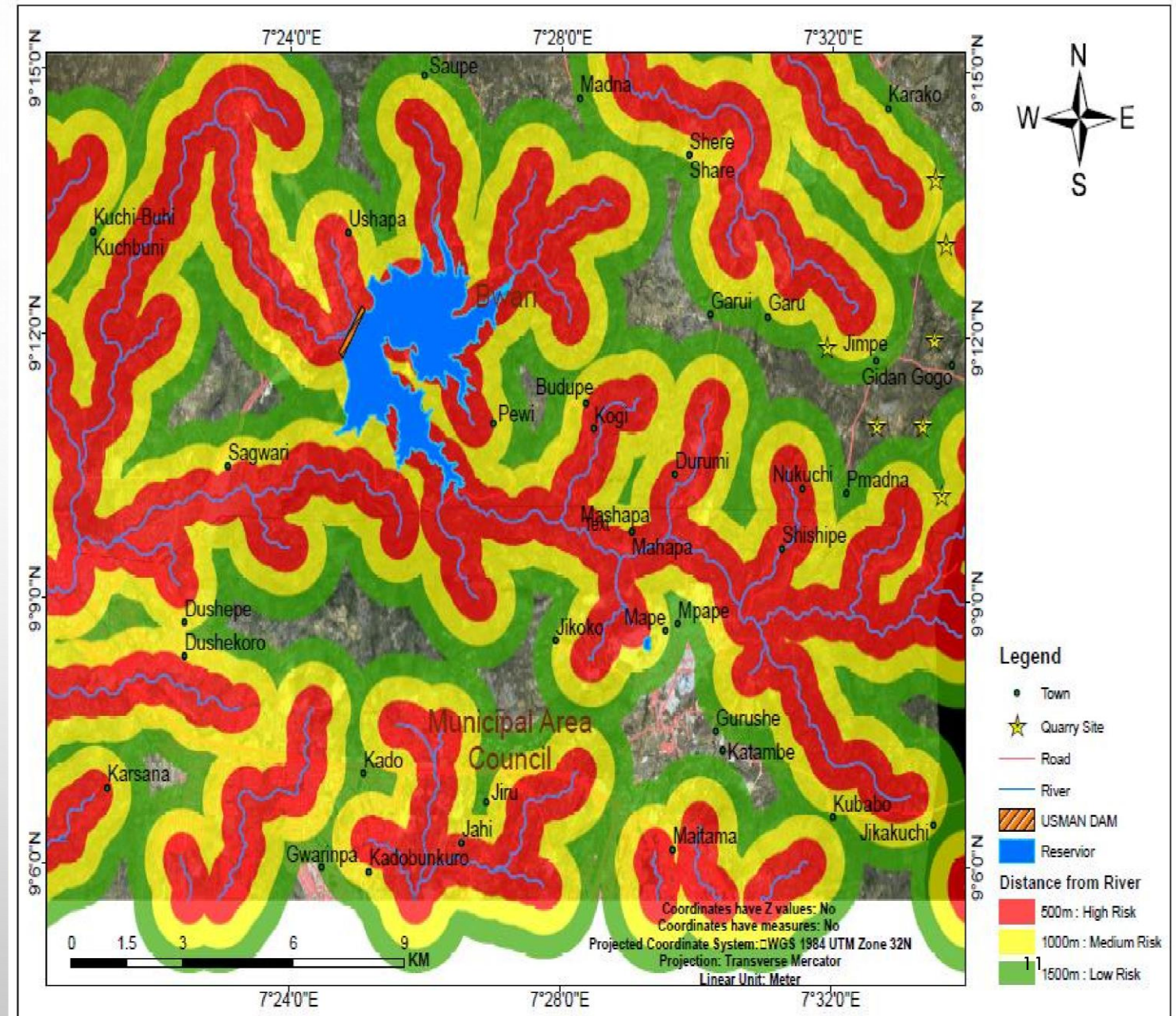


Results contd.

- Soil – ranked as Gleysol (Small Contributor) and Lixisol (High Contributor) to Flood based on their Index Values "0.2-0.4" & "0.6-0.8".
- Elevation – ranked as High (Small Contributor) and Low (High Contributor) to Flood based on their Index Values "0.2-0.4" & "0.6-0.8".
- Slope – ranked between flat (Very Small Contributor) and Extreme (Very High Contributor) to Flood based on their Index Values "<0.2 and 1".

Drainage Proximity Map

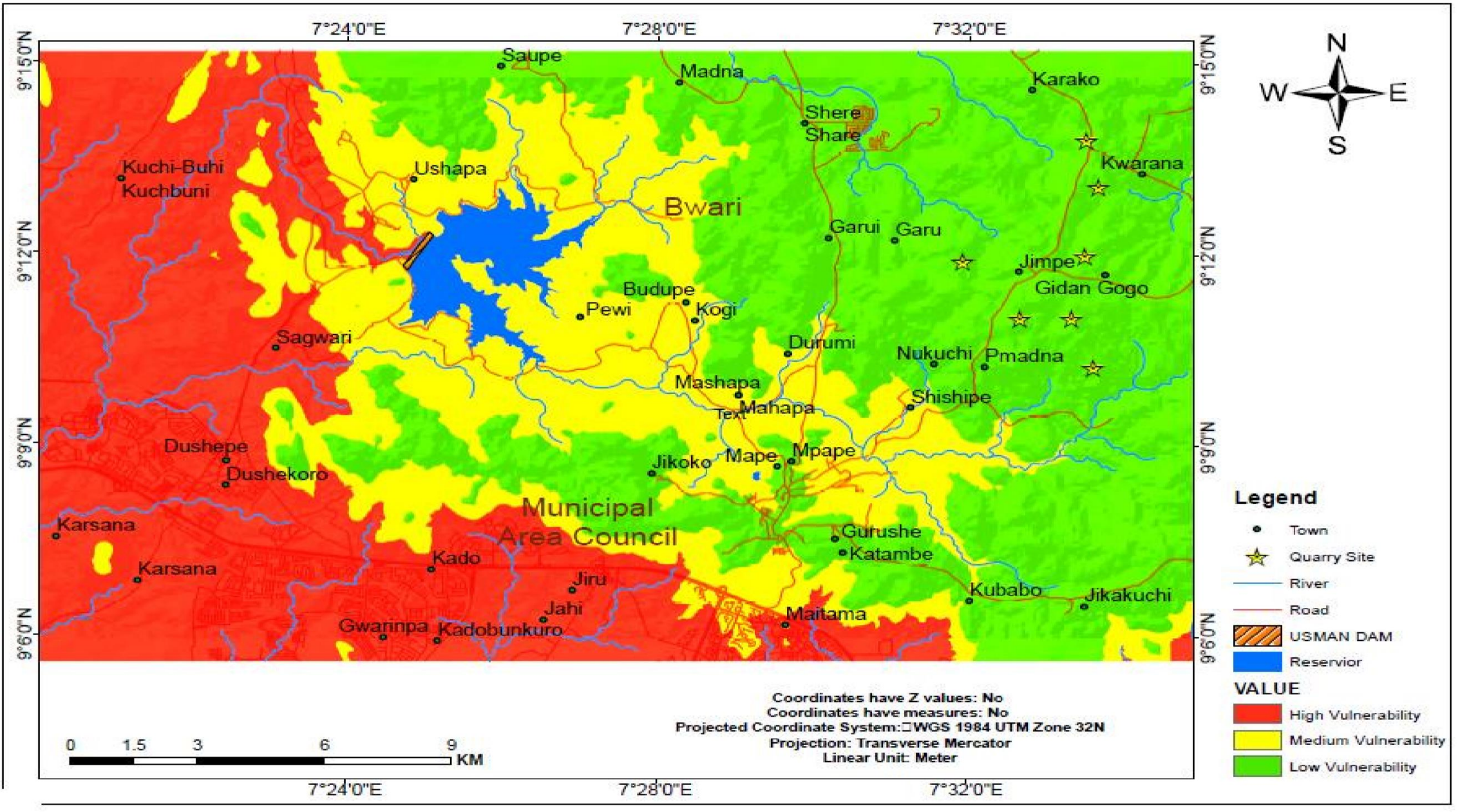
- Settlements from reservoir & river channel were identified to be at Low (1500m), Moderate (1000m) and High (500m) Risks of being Flooded.



Results contd.

- MCA – ranked Slope (0.24) and Elevation (0.24) as the most contributing factors to Flood followed by proximity to drainage (0.16), LULC (0.12) and Soil (0.08) respectively.
- Consistency Ratio (CR) = 0.011533 (that is, 1%) indicating the rankings were consistent where $CR < 0.1$.
- Flood Vulnerability classes identified for the study area were Low (29.57%), Moderate (64.02%) and High (6.41%) from the Flood Vulnerability Map.

Flood Vulnerability Map



Conclusions

- The Flood risk settlements surrounding the Usman dam in Abuja, Nigeria have been assessed using the MCA.
- Slope and Elevation were the most contributing factors to Flooding followed by proximity to drainage, LULC and Soil.
- Settlements in the eastern part were the least vulnerable to Flood while that close to the river course and dam reservoir in the central and western parts were more vulnerable to Flood incidences.
- It is possible to relocate settlements to the eastern part of the study area to forestall future Flood hazard.

The background features a light gray gradient with several realistic water droplets of various sizes scattered in the corners. The droplets have highlights and shadows, giving them a three-dimensional appearance.

Thanks for Listening